

PRODUCT INFORMATION PACKET

marathon®
Motors

Model No: 182TTFC6027

Catalog No: U607A

General Purpose Motor, 3 & 2 HP, 3 Ph, 60 & 50 Hz, 208-230/460 & 190/380 V, 1800 & 1500 RPM,
182T Frame, TEFC



Regal and Marathon are trademarks of Regal Rexnord Corporation or one of its affiliated companies.

©2023 Regal Rexnord Corporation, All Rights Reserved. MC017097E

RegalRexnord

Nameplate Specifications

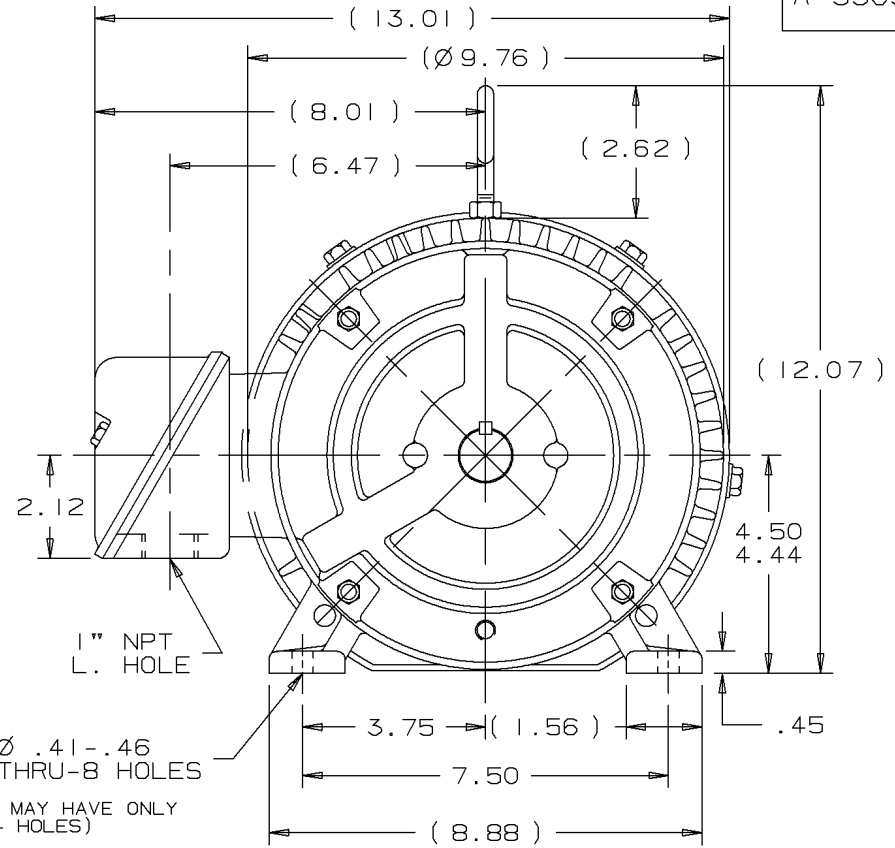
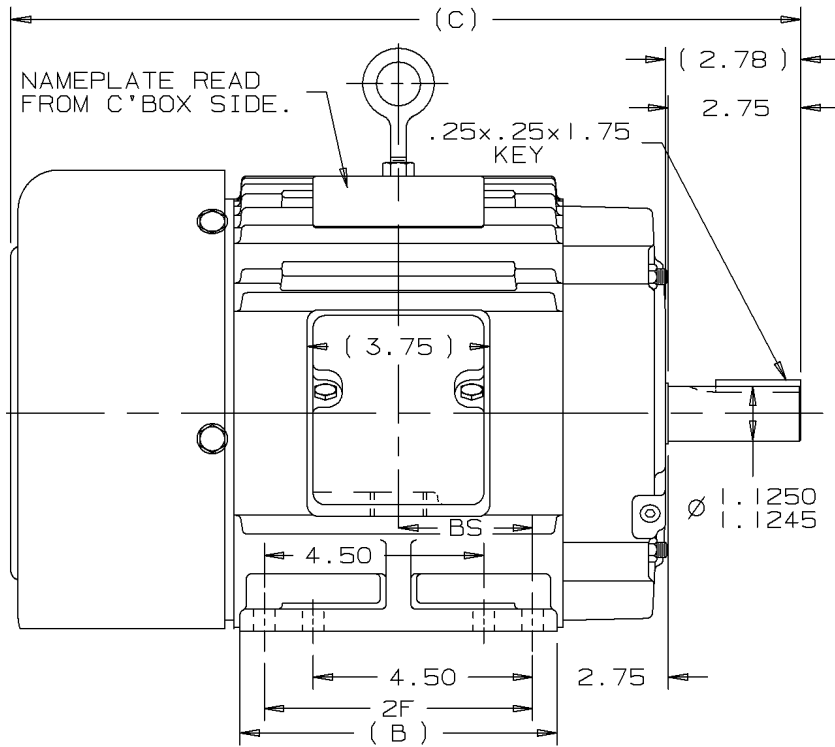
Phase	3	Output HP	3 & 2 Hp
Output KW	2.2 & 1.5 kW	Voltage	208-230/460 & 190/380 V
Speed	1770 & 1465 rpm	Service Factor	1.15 & 1.15
Frame	182T	Enclosure	Totally Enclosed Fan Cooled
Thermal Protection	No Protection	Efficiency	90.2 & 91 %
Ambient Temperature	40 °C	Frequency	60 & 50 Hz
Current	8.3-8.4 & 6.6/3.3 A	Power Factor	79.5
Duty	Continuous	Insulation Class	F
Design Code	B	KVA Code	J
Drive End Bearing Size	6206	Opp Drive End Bearing Size	6205
UL	Recognized	CSA	Y
CE	Y	IP Code	43
Number of Speeds	1		

Technical Specifications

Electrical Type	Squirrel Cage Induction Run	Starting Method	Across The Line
Poles	4	Rotation	Reversible
Mounting	Rigid Base	Motor Orientation	Horizontal
Drive End Bearing	Ball	Opp Drive End Bearing	Ball
Frame Material	Cast Iron	Shaft Type	T
Overall Length	14.80 in	Shaft Diameter	1.130 in
Shaft Extension	2.75 in	Assembly/Box Mounting	F1/F2 CAPABLE
Connection Drawing	00501001ME	Outline Drawing	SS69232

This is an uncontrolled document once printed or downloaded and is subject to change without notice. Date Created:06/22/2023

A-SS69232



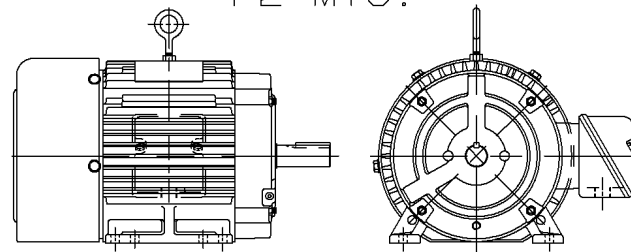
BOX CAN BE MOUNTED ON OPPOSITE SIDE BY
REMOVING BRACKETS & TURNING FRAME 180°.


BOX CAN BE ROTATED IN 90° STEPS.

DASH	FR.	C	B	2F	BS
575	182T	15.19	5.50	4.50	2.25
675	184T	16.19	6.50	5.50	2.75
800	184T	17.44	7.75	5.50	3.38

Ø .41 - .46
THRU-8 HOLES
(182 FR MAY HAVE ONLY
4 HOLES)

F2 MTG.



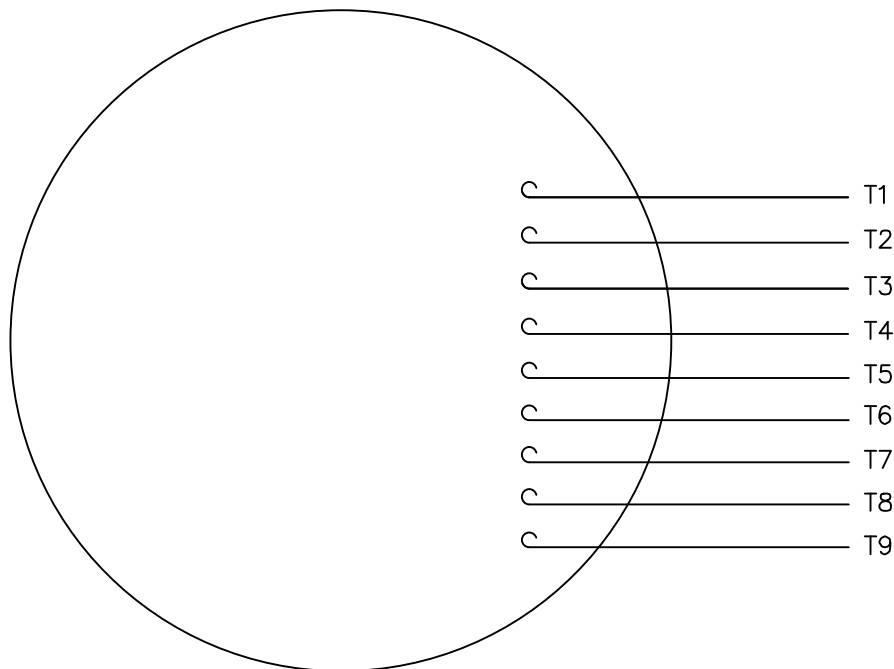
					TOLERANCES UNLESS SPECIFIED				DRAWN CTO 02-05-2002					
					DEC.	TOLERANCE			CHK DRS 02-05-2002					
					.X	±.1			APPD TB 02-05-2002					
					.XX	±.03			SCALE					
					.XXX	±.005	TITLE OTULINE 180 FR. - BB - TS - TEFC			REF				
I	NEW DRAWING		CN 34817	CTO 02-05-2002	TB	.XXXX	±.0005	✓ SURFACE ROUGHNESS UNLESS SPECIFIED	MAT'L.		FMF			
NO.	REVISION			BY	DATE	CHK	ANG		± 7'30"	FINISH		PREV		
THIS DRAWING IN DESIGN AND DETAIL IS OUR PROPERTY AND MUST NOT BE USED EXCEPT IN CONNECTION WITH OUR WORK. ALL RIGHTS OF DESIGN AND INVENTION ARE RESERVED. THIS IS AN ELECTRONICALLY GENERATED DOCUMENT - DO NOT SCALE THIS PRINT					PURCHASED		CAD FILE SS69232		SHOP BOOK		SIZE	DRAWING NO.		REV. I
					DIST WA - LB - WP - LM - BR - BY				A	SS69232				

```
ERROR: syntaxerror  
OFFENDING COMMAND: --nostringval--
```

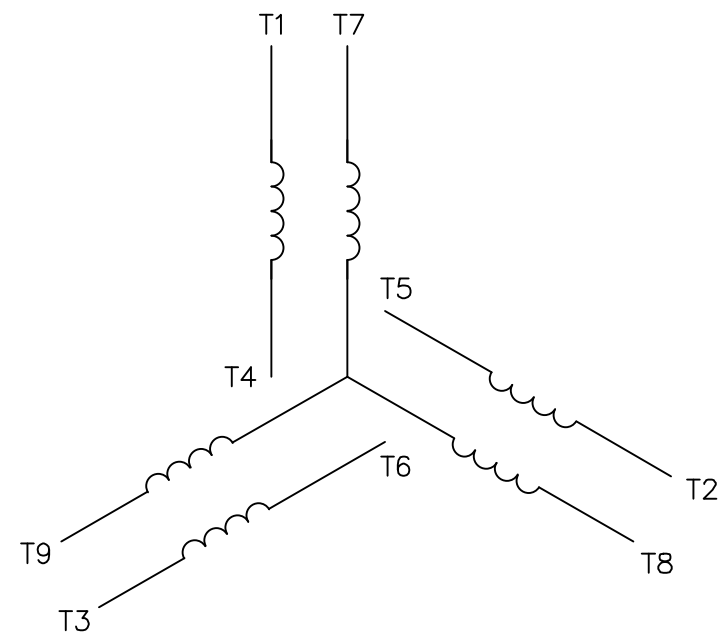
```
STACK:
```

```
/im  
-savelevel-
```

VIEW FROM OUTSIDE OF MOTOR AT SWITCH END.



LINE LEADS



VOLTAGE	L1	L2	L3	JOIN & INSULATE
HIGH	T1	T2	T3	(T4,T7) (T5,T8) (T6,T9)
LOW	T1,T7	T2,T8	T3,T9	T4,T5,T6

		TOLERANCES UNLESS SPECIFIED		MARATHON ELECTRIC	DRAWN RDW 04/12/02
		DEC.	INCHES		
		.X	±.1	TITLE EXTERNAL WIRING DIAGRAM 3 PHASE W/O PROTECTOR	CHK
		.XX	±.01		APPD
		.XXX	±.005		SCALE 1=1
		.XXXX	±.0005		REF FIG.2-51
NO.	REVISION	BY & DATE	CHK	ANG	MAT'L. DECAL - 004014
					FINISH
THIS DRAWING IN DESIGN AND DETAIL IS OUR PROPERTY AND MUST NOT BE USED EXCEPT IN CONNECTION WITH OUR WORK ALL RIGHTS OF DESIGN AND INVENTION ARE RESERVED THIS IS AN ELECTRONICALLY GENERATED DOCUMENT - DO NOT SCALE THIS PRINT				RFP 04/12/02	CAD FILE 00501001ME
				DIST	SIZE A
					DRAWING NO. 005010-01ME
					REV.

CERTIFICATION DATA SHEET

Model#: 182TTFC6027 AA

WINDING#: T08704010 NONE 3

CONN. DIAGRAM: 00501001ME

ASSEMBLY: F1/F2 CAPABLE

OUTLINE: SS69232

TYPICAL MOTOR PERFORMANCE DATA

HP	KW	SYNC. RPM	F.L. RPM	FRAME	ENCLOSURE	KVA CODE	DESIGN
3&2	2.24&1.49	1800	1770&1465	182T	TEFC	J	B

PH	Hz	VOLTS	FL AMPS	START TYPE	DUTY	INSL	S.F	AMB°C	ELEVATION
3	60/50	208- 230/460#190/ 380	8.3- 8.4&6.6/3.3	ACROSS THE LINE	CONTINUOU S	F2	1.15/1.15	40	3300

FULL LOAD EFF: 90.2&91	3/4 LOAD EFF: 89.5	1/2 LOAD EFF: 88.5	GTD. EFF	ELEC. TYPE	NO LOAD AMPS
FULL LOAD PF: 79.5&76	3/4 LOAD PF: 73.5	1/2 LOAD PF: 62	89.5	SQ CAGE IND RUN	4 / 2

F.L. TORQUE	LOCKED ROTOR AMPS	L.R. TORQUE	B.D. TORQUE	F.L. RISE°C
8.9 LB-FT	58.8 / 29.4	19.5 LB-FT 218	32.7 LB-FT 367	25

SOUND PRESSURE @ 3 FT.	SOUND POWER	ROTOR WK^2	MAX. WK^2	SAFE STALL TIME	STARTS /HOUR	APPROX. MOTOR WGT
- dBA	- dBA	0.335 LB-FT^2	0.3 LB-FT^2	15 SEC.	2	- LBS.

*** SUPPLEMENTAL INFORMATION ***

DE BRACKET TYPE	ODE BRACKET TYPE	MOUNT TYPE	ORIENTATION	SEVERE DUTY	HAZARDOUS LOCATION	DRIP COVER	SCREENS	PAINT
STANDARD	STANDARD	RIGID	HORIZONTAL	FALSE	NONE	FALSE	NONE	BLUE (ENAMEL)

BEARINGS		GREASE	SHAFT TYPE	SPECIAL DE	SPECIAL ODE	SHAFT MATERIAL	FRAME MATERIAL
DE	OPE						
BALL	BALL	POLYREX EM	T	NONE	NONE	1045 HOT ROLLED (C-204)	CAST IRON
6206	6205						

THERMO-PROTECTORS				THERMISTORS	CONTROL	SPACE /n HEATERS
THERMOSTATS	PROTECTORS	WDG RTDs	BRG RTDs			
NONE	NOT	NONE	NONE	NONE	FALSE	NONE VOLTS

If Inverter equals NONE, contact factory for further
information

* N O T E S *	INVERTER TORQUE: NONE
	INV. HP SPEED RANGE: NONE
	ENCODER: NONE
	NONE NONE NONE NONE PPR
	BRAKE: NONE NONE
	NONE P/N NONE
	NONE NONE
	NONE FT-LB NONE V NONE Hz

DATE: 06/27/2017 02:29:12 AM
FORM 3531 REV.3 02/07/99

** Subject to change without notice.

Data Sheet

Date: 12/13/2018

Customer: _____

Attention: _____

Submitted by: FAREEDA DUDEKULA



182TTC6027

Submittal

Data @ 460 V

Motor Load Data

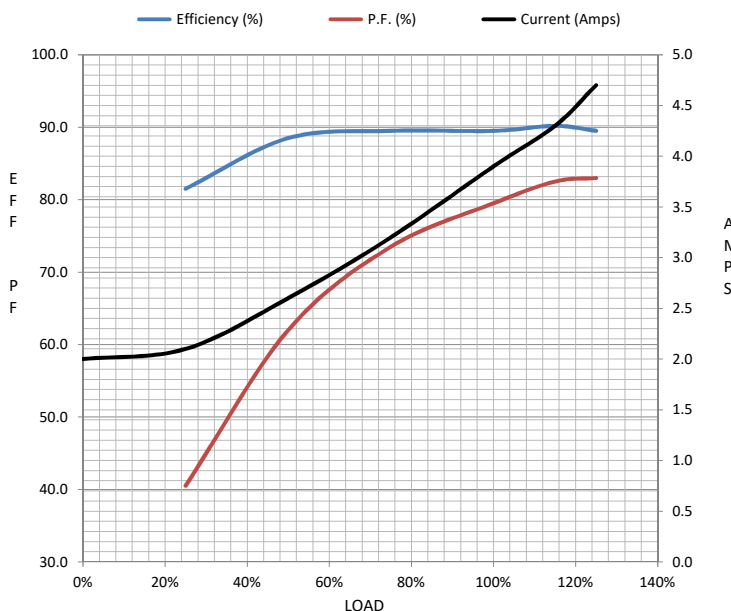
Load	0%	25%	50%	75%	100%	115%	125%	LR	
Current (Amps)	2.00	2.10	2.60	3.2	3.9	4.3	4.7	29.4	
Torque (ft-lb)	0.00	2.20	4.4	6.7	8.9	10.3	11.2	19.5	
RPM	1800	1795	1785	1775	1770	1,765	1760	0	
Efficiency (%)		81.5	88.5	89.5	89.5	90.2	89.5		
P.F. (%)	7.5	40.5	62.0	73.5	79.5	82.5	83.0	36.0	

Motor Speed Data

	LR	Pull-Up	BD	Rated	Idle
Speed (RPM)	0	375	1575	1770	1800
Current (Amps)	29.4	26.0	18.3	3.9	2.00
Torque (ft-lb)	19.5	15.0	32.7	8.9	0.00

Information Block

HP	3.0			
Sync. RPM	1800			
Frame	182			
Enclosure	TEFC			
Construction	TFS			
Voltage	208-230/460#190/380	V		
Frequency	60	Hz		
Design	B			
LR Code letter	J			
Service Factor	1.15			
Temp Rise @ FL	28	° C		
Duty	CONT			
Ambient	40	° C		
Elevation	1,000	feet		
Rotor/Shaft wk²	0.34	Lb-Ft²		
Ref Wdg	T08704010 NONE			
Sound Pressure @ 1M	999	dBA		
VFD Rating	NONE			
Outline Dwg	SS69232			
Conn. Diag	5010.01			
Additional Specifications:				
0				
0				
EQUIV CKT (OHMS / PHASE)				
R1	R2	X1	X2	Xm
0.0000	0.0000	0.0000	0.0000	0.0000



Speed -Torque Curve

