

PRODUCT INFORMATION PACKET

marathon®
Motors

Model No: 182TTFB6028

Catalog No: GT1210

Globetrotter® General Purpose Motor, 3 & 2 HP, 3 Ph, 60 & 50 Hz, 230/460 & 190/380 V,
1800 & 1500 RPM, 182TC Frame, TEFC



Regal and Marathon are trademarks of Regal Rexnord Corporation or one of its affiliated companies.

©2023 Regal Rexnord Corporation, All Rights Reserved. MC017097E

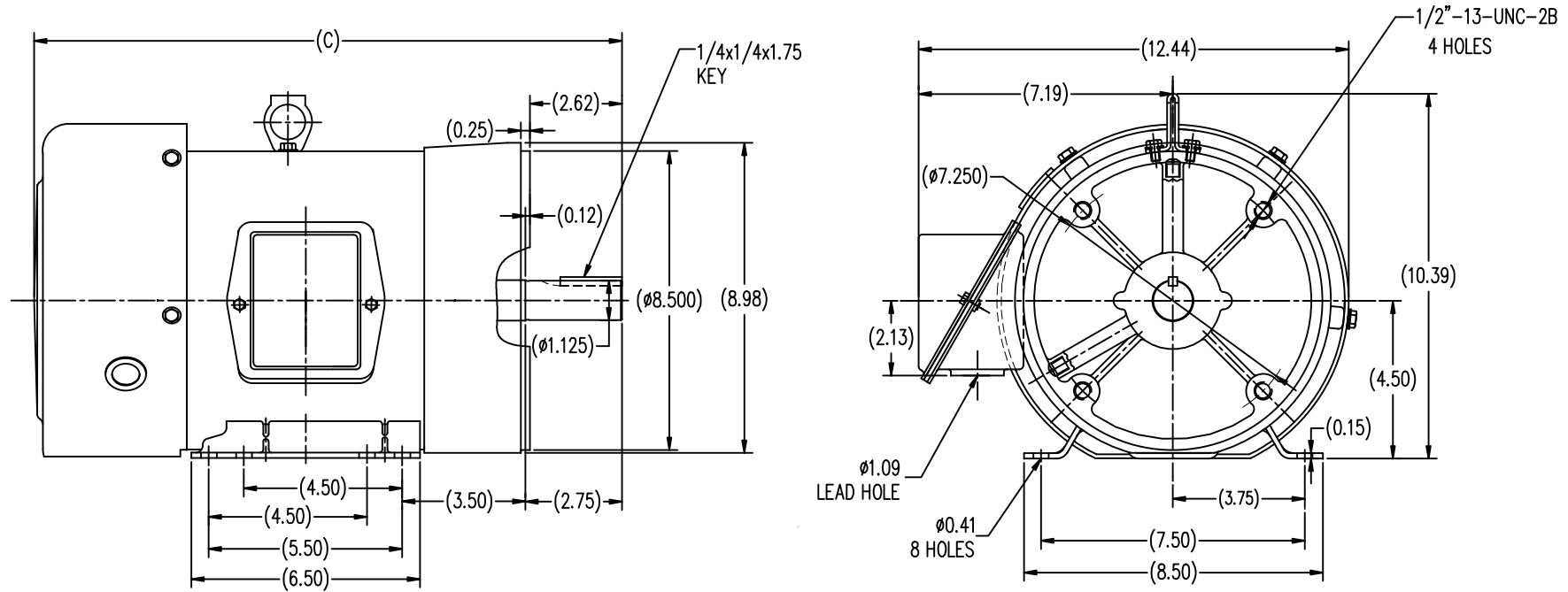
RegalRexnord

Nameplate Specifications

Phase	3	Output HP	3 & 2 Hp
Output KW	2.2 & 1.5 kW	Voltage	230/460 & 190/380 V
Speed	1750 & 1467 rpm	Service Factor	1.15 & 1.0
Frame	182TC	Enclosure	Totally Enclosed Fan Cooled
Thermal Protection	No Protection	Efficiency	89.5 & 88.5 %
Ambient Temperature	40 °C	Frequency	60 & 50 Hz
Current	7.8/3.9 & 6/3 A	Power Factor	84
Duty	Continuous	Insulation Class	F
Design Code	B	KVA Code	K
Drive End Bearing Size	6206	Opp Drive End Bearing Size	6205
UL	Recognized	CSA	Y
CE	Y	IP Code	43
Number of Speeds	1		

Technical Specifications

Electrical Type	Squirrel Cage Induction Run	Starting Method	Across The Line
Poles	4	Rotation	Reversible
Resistance Main	3.76 Ohms	Mounting	Rigid Base
Motor Orientation	Horizontal	Drive End Bearing	Ball
Opp Drive End Bearing	Ball	Frame Material	Rolled Steel
Shaft Type	T	Overall Length	15.75 in
Shaft Diameter	1.125 in	Shaft Extension	2.62 in
Assembly/Box Mounting	F1/F2 CAPABLE		
Connection Drawing	EE7308	Outline Drawing	SS620296-182TC



TTFB 182TC	15.75
TTFB 184TC	16.73
FRAME	C

TOLERANCES UNLESS SPECIFIED		DRAWN		SY 4-19-2010	
DEC.	INCHES	CHK	ZYH	4-19-2010	
.X	±.1	APPD	CL	4-19-2010	
.XX	±.03	SCALE	1=4		
.XXX	±.005	REF			
.XXXX	±.0005	FMF	HWADA		
NO.	REVISION	BY & DATE	CHK	ANG	±1/2
THIS DRAWING IN DESIGN AND DETAIL IS OUR PROPERTY AND MUST NOT BE USED EXCEPT IN CONNECTION WITH OUR WORK ALL RIGHTS OF DESIGN AND INVENTION ARE RESERVED THIS IS AN ELECTRONICALLY GENERATED DOCUMENT - DO NOT SCALE THIS PRINT		RFP	CAD FILE	SS620296	SIZE
		DIST			B
					DRAWING NO.
					SS620296
					REV.



				TOLERANCES UNLESS SPECIFIED		 Regal Beloit America, Inc.	DRAWN RM 11/20/1990		
5	CHG TO REGAL LOGO	SL 09/10/2015	AB	DEC.	INCHES		CHK ML 11/21/1990		
4	REVISED IEC NOTATIONS	MSG 11/15/2011	CMN	.X	±.1		APPD SAS 04/24/2003		
3	ADDED IEC NOTATIONS... (U1), (V1) ETC. MU95194	MSG 5/10/2010	MJS	.XX	±.02		SCALE 1=1		
2	ADDED THE OPTIONAL CORD CONNECTION MU46318	RDH 04/24/2003	DRS	.XXX	±.005	TITLE CONNECTION DIAGRAM 3ø – DUAL VOLTAGE MOTOR	REF		
1	REDRAWN	RM 11/20/1990		.XXXX	±.0005	MAT'L.	FMF		
NO.	REVISION	BY & DATE	CHK	ANG	±7"30"	FINISH	PREV		
THIS DRAWING IN DESIGN AND DETAIL IS OUR PROPERTY AND MUST NOT BE USED EXCEPT IN CONNECTION WITH OUR WORK ALL RIGHTS OF DESIGN AND INVENTION ARE RESERVED THIS IS AN ELECTRONICALLY GENERATED DOCUMENT – DO NOT SCALE THIS PRINT			RFP		CAD FILE ee7308	SIZE A	DRAWING NO. EE7308	PAGE OF	REV. 5
			DIST WP						

THIS DRAWING IN DESIGN AND DETAIL IS OUR PROPERTY AND MUST NOT BE USED EXCEPT IN CONNECTION WITH OUR WORK ALL RIGHTS OF DESIGN AND INVENTION ARE RESERVED
THIS IS AN ELECTRONICALLY GENERATED DOCUMENT — DO NOT SCALE THIS PRINT

CERTIFICATION DATA SHEET

Model#: 182TTFB6028 BB

WINDING#: CHT18240007 NONE 1

CONN. DIAGRAM: EE7308

ASSEMBLY: F1/F2 CAPABLE

OUTLINE: SS620296

TYPICAL MOTOR PERFORMANCE DATA

HP	KW	SYNC. RPM	F.L. RPM	FRAME	ENCLOSURE	KVA CODE	DESIGN
3&2	2.24&1.49	1800	1750&1467	182TC	TEFC	K	B

PH	Hz	VOLTS	FL AMPS	START TYPE	DUTY	INSL	S.F	AMB°C	ELEVATION
3	60/50	230/460#190/ 380	7.8/3.9&6/3	ACROSS THE LINE	CONTINUOU S	F7	1.15/1.0	40	3300

FULL LOAD EFF: 89.5&88.5	3/4 LOAD EFF: 88.5	1/2 LOAD EFF: 87.5	GTD. EFF	ELEC. TYPE	NO LOAD AMPS
FULL LOAD PF: 84&82	3/4 LOAD PF: 78	1/2 LOAD PF: 68	88.5	SQ CAGE IND RUN	3.2 / 1.6

F.L. TORQUE	LOCKED ROTOR AMPS	L.R. TORQUE	B.D. TORQUE	F.L. RISE°C
9 LB-FT	64 / 32	21 LB-FT 233	29 LB-FT 322	55

SOUND PRESSURE @ 3 FT.	SOUND POWER	ROTOR WK^2	MAX. WK^2	SAFE STALL TIME	STARTS /HOUR	APPROX. MOTOR WGT
62 dBA	72 dBA	0.4 LB-FT^2	40 LB-FT^2	25 SEC.	2	95 LBS.

*** SUPPLEMENTAL INFORMATION ***

DE BRACKET TYPE	ODE BRACKET TYPE	MOUNT TYPE	ORIENTATION	SEVERE DUTY	HAZARDOUS LOCATION	DRIP COVER	SCREENS	PAINT
C-FACE	STANDARD	RIGID	HORIZONTAL	FALSE	NONE	FALSE	NONE	BLUE (ENAMEL)

BEARINGS		GREASE	SHAFT TYPE	SPECIAL DE	SPECIAL ODE	SHAFT MATERIAL	FRAME MATERIAL
DE	OPE						
BALL	BALL						
6206	6205	POLYREX EM	T	NONE	NONE	1045 HOT ROLLED (C-204)	ROLLED STEEL

THERMO-PROTECTORS				THERMISTORS	CONTROL	SPACE /n HEATERS
THERMOSTATS	PROTECTORS	WDG RTDs	BRG RTDs			
NONE	NOT	NONE	NONE	NONE	FALSE	NONE VOLTS

If Inverter equals NONE, contact factory for further
information

* N O T E S *	INVERTER TORQUE: NONE					
	INV. HP SPEED RANGE: NONE					
	ENCODER: NONE					
	NONE NONE NONE NONE PPR					
	BRAKE: NONE NONE					
	NONE P/N NONE					
	NONE NONE					
	NONE FT-LB		NONE V		NONE Hz	

DATE: 06/27/2017 02:07:47 AM

FORM 3531 REV.3 02/07/99

** Subject to change without notice.

Data Sheet

Date: 6/29/2017

Customer: _____

Attention: _____

Submitted by: FAREEDA DUDEKULA



182TTFB6028

Submittal

Data @ 460 V

Motor Load Data

Load	0%	25%	50%	75%	100%	115%	125%	LR	
Current (Amps)	1.60	1.85	2.40	3.0	3.9	4.2	4.6	32.0	
Torque (ft-lb)	0.00	2.20	4.4	6.7	9.0	10.3	11.3	21.0	
RPM	1800	1790	1780	1770	1760	1,755	1750	0	
Efficiency (%)		81.5	87.5	88.5	89.5	88.5	87.5		
P.F. (%)	8.0	47.0	68.0	78.0	82.0	85.0	86.0	47.0	

Motor Speed Data

	LR	Pull-Up	BD	Rated	Idle					
Speed (RPM)	0	900	1710	1760	1800					
Current (Amps)	32.0	28.0	17.5	3.9	1.60					
Torque (ft-lb)	21.0	18.0	29.0	9.0	0.00					
<div><div><div>— Efficiency (%)</div><div>— P.F. (%)</div><div>— Current (Amps)</div></div><div>EFFICIENCY (%)</div><div>P.F. (%)</div><div>CURRENT (AMPS)</div><div>LOAD</div></div>						Information Block				
						HP		3.0		
						Sync. RPM		1800		
						Frame		182		
						Enclosure		TEFC		
						Construction		TFC		
						Voltage		30/460#190/3Ø V		
						Frequency		60 Hz		
						Design		B		
						LR Code letter		K		
						Service Factor		1.15		
						Temp Rise @ FL		80 ° C		
						Duty		CONT		
						Ambient		40 ° C		
						Elevation		1,000 feet		
						Rotor/Shaft wk²		0.40 Lb-Ft²		
						Ref Wdg		CHT18240007 NONE		
Sound Pressure @ 1M		62 dBA								
VFD Rating		NONE								
Outline Dwg		SS620296								
Conn. Diag		EE7308								
Additional Specifications:										
0										
0										
EQUIV CKT (OHMS / PHASE)										
R1		R2		X1		X2		Xm		
2.3530		1.6160		5.0840		7.9000		130.4100		

Speed -Torque Curve

