

# PRODUCT INFORMATION PACKET

Model No: 182TTDW7411

Catalog No: Y467A

Other Purpose Motor, 2 & 0.50 HP, 3 Ph, 60 & 60 Hz, 460 & 460 V, 1800 & 1800 RPM, 182T Frame, DP



Regal and Marathon are trademarks of Regal Rexnord Corporation or one of its affiliated companies.

©2023 Regal Rexnord Corporation, All Rights Reserved. MC017097E

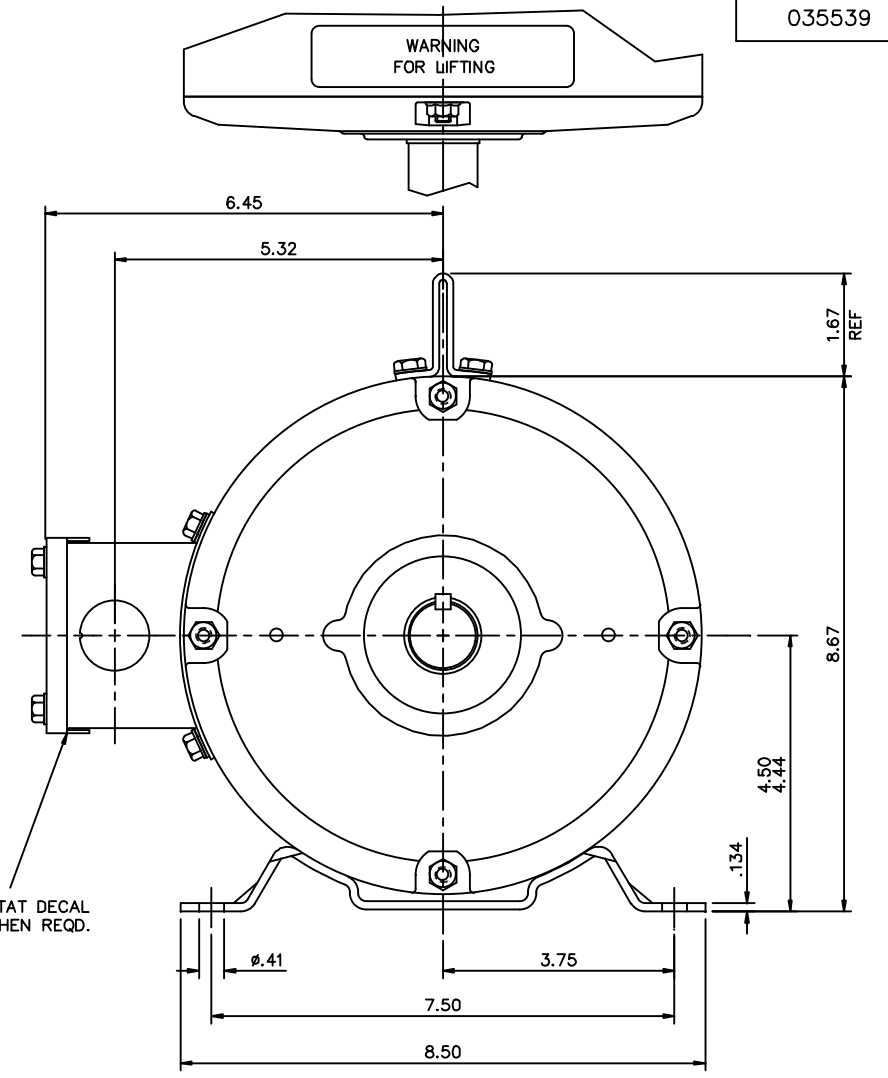
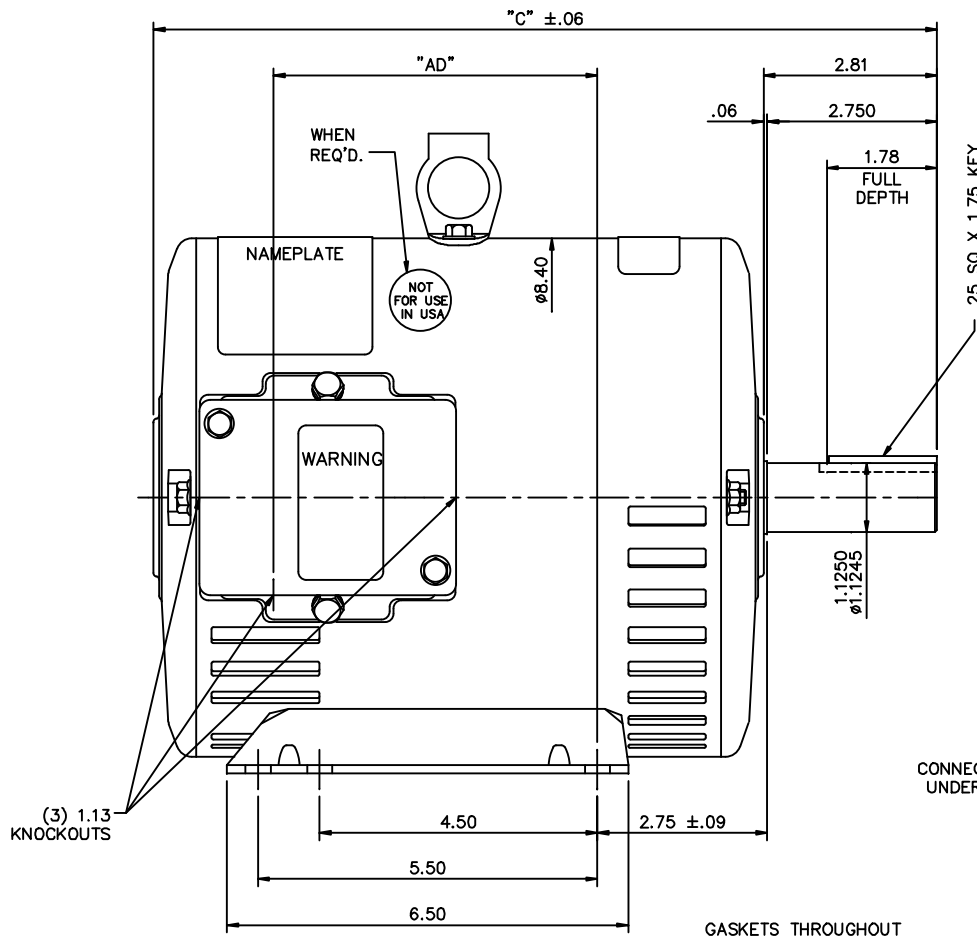


**Nameplate Specifications**

|                        |                           |                            |                        |
|------------------------|---------------------------|----------------------------|------------------------|
| Phase                  | <b>3</b>                  | Output HP                  | <b>2 &amp; 0.50 Hp</b> |
| Output KW              | <b>1.5 &amp; 0.37 kW</b>  | Voltage                    | <b>460 &amp; 460 V</b> |
| Speed                  | <b>1765 &amp; 885 rpm</b> | Service Factor             | <b>1.15 &amp; 1.15</b> |
| Frame                  | <b>182T</b>               | Enclosure                  | <b>Drip Proof</b>      |
| Thermal Protection     | <b>No Protection</b>      | Efficiency                 | <b>82 &amp; 53.8 %</b> |
| Ambient Temperature    | <b>40 °C</b>              | Frequency                  | <b>60 &amp; 60 Hz</b>  |
| Current                | <b>2.8 &amp; 2.15 A</b>   | Power Factor               | <b>81</b>              |
| Duty                   | <b>Continuous</b>         | Insulation Class           | <b>F</b>               |
| Design Code            | <b>2VT</b>                | KVA Code                   | <b>K</b>               |
| Drive End Bearing Size | <b>6206</b>               | Opp Drive End Bearing Size | <b>6205</b>            |
| UL                     | <b>Recognized</b>         | CSA                        | <b>Y</b>               |
| CE                     | <b>Y</b>                  | IP Code                    | <b>22</b>              |
| Number of Speeds       | <b>2</b>                  |                            |                        |

**Technical Specifications**

|                       |                                    |                       |                        |
|-----------------------|------------------------------------|-----------------------|------------------------|
| Electrical Type       | <b>Squirrel Cage Induction Run</b> | Starting Method       | <b>Across The Line</b> |
| Poles                 | <b>4//8</b>                        | Rotation              | <b>Reversible</b>      |
| Resistance Main       | <b>0 Ohms</b>                      | Mounting              | <b>Rigid Base</b>      |
| Motor Orientation     | <b>Horizontal</b>                  | Drive End Bearing     | <b>Ball</b>            |
| Opp Drive End Bearing | <b>Ball</b>                        | Frame Material        | <b>Rolled Steel</b>    |
| Shaft Type            | <b>T</b>                           | Overall Length        | <b>13.69 in</b>        |
| Frame Length          | <b>9.50 in</b>                     | Shaft Diameter        | <b>1.125 in</b>        |
| Shaft Extension       | <b>2.81 in</b>                     | Assembly/Box Mounting | <b>F1 ONLY</b>         |
| Connection Drawing    | <b>005046.01ME</b>                 | Outline Drawing       | <b>035539-950</b>      |

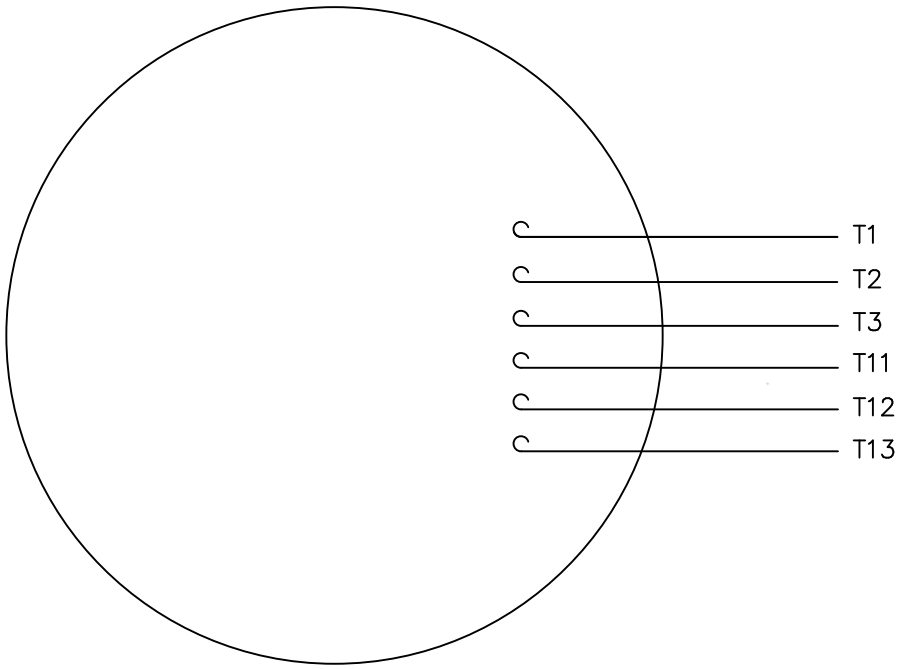


GASKETS THROUGHOUT

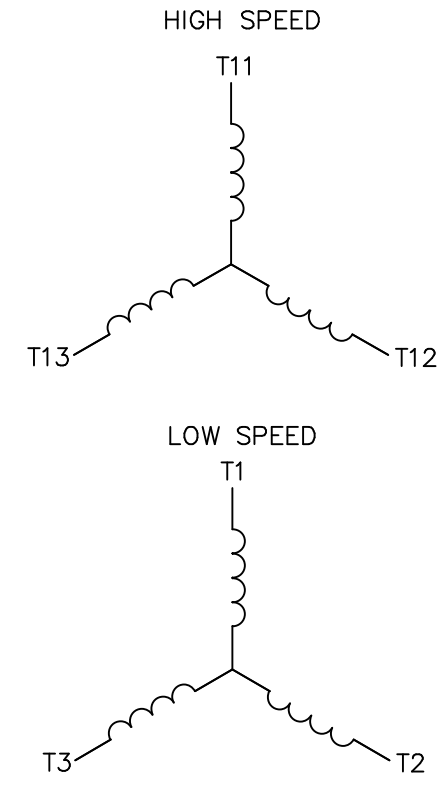
| DASH NO. | "C"   | "AD" |
|----------|-------|------|
| 850      | 12.69 | 5.25 |
| 900      | 13.19 | 5.75 |
| 950      | 13.69 | 6.25 |
| 1000     | 14.19 | 6.75 |
| 1050     | 14.69 | 7.25 |
| 1100     | 15.19 | 7.75 |
| 1150     | 15.69 | 8.25 |

|  |   |  |  | TOLERANCES UNLESS SPECIFIED |          | MARATHON ELECTRIC    |        | DRAWN YS 07/23/07 |             |
|--|---|--|--|-----------------------------|----------|----------------------|--------|-------------------|-------------|
|  |   |  |  | DEC.                        | INCHES   |                      |        | CHK               |             |
|  |   |  |  | .X                          | ±.1      |                      |        | APPD              |             |
|  |   |  |  | .XX                         | ±.03     | TITLE                |        | SCALE             | 1-2         |
| 02   | SHOWN "NOT FOR USE IN USA" DECAL LOCATION |  |  | JD                          | 05/07/12 | OUTLINE - 180T FRAME |        | REF               | 035464      |
| 01   | CHANGED TO NEW CONDUIT BOX 022737         |  |  | YS                          | 03/19/08 | DRIP PROOF - RIGID   |        | FMF               |             |
|  |   |  |  | .XXX                        | ±.005    | MAT'L                |        | PREV              |             |
|  |   |  |  | .XXXX                       | ±.0005   | GENERAL PURPOSE      |        |                   |             |
| NO.  | REVISION                                  |  |  | BY & DATE                   | CHK      | ANG                  | FINISH |                   |             |
|  |   |  |  |                             |          |                      |        |                   |             |
| THIS DRAWING IN DESIGN AND DETAIL IS OUR PROPERTY AND MUST NOT BE USED EXCEPT IN CONNECTION WITH OUR WORK ALL RIGHTS OF DESIGN AND INVENTION ARE RESERVED THIS IS AN ELECTRONICALLY GENERATED DOCUMENT - DO NOT SCALE THIS PRINT |   |  |  | RFP                         |          | CAD FILE             | 035539 | SIZE              | DRAWING NO. |
|  |   |  |  | DIST                        |          |                      |        | B                 | 035539      |
|  |   |  |  |                             |          |                      |        |                   | REV.        |
|  |   |  |  |                             |          |                      |        |                   | 02          |

VIEW FROM OUTSIDE OF MOTOR AT SWITCH END.



LINE LEADS



|            |     |     |     |
|------------|-----|-----|-----|
|            | L1  | L2  | L3  |
| HIGH SPEED | T11 | T12 | T13 |
| LOW SPEED  | T1  | T2  | T3  |

|     |          | TOLERANCES UNLESS SPECIFIED |               |
|-----|----------|-----------------------------|---------------|
|     |          | DEC.                        | INCHES        |
|     |          | .X                          | ±.1           |
|     |          | .XX                         | ±.01          |
|     |          | .XXX                        | ±.005         |
|     |          | .XXXX                       | ±.0005        |
| NO. | REVISION | BY & DATE                   | CHK ANG ±1/2° |



TITLE: EXTERNAL WIRING DIAGRAM TYPE "T" W/O PROTECTOR  
 MAT'L. DECAL - 004040 - 2 WDG./2 SPEED 1Y-1Y  
 FINISH: MARATHON

DRAWN SW 06/19/02  
 CHK MN 06/19/02  
 APPD  
 SCALE 1=1  
 REF  
 FMF  
 PREV

|  |  |      |          |            |      |             |      |
|--|--|------|----------|------------|------|-------------|------|
| THIS DRAWING IN DESIGN AND DETAIL IS OUR PROPERTY AND MUST NOT BE USED EXCEPT IN CONNECTION WITH OUR WORK ALL RIGHTS OF DESIGN AND INVENTION ARE RESERVED THIS IS AN ELECTRONICALLY GENERATED DOCUMENT - DO NOT SCALE THIS PRINT |  | RFP  | CAD FILE | 00504601ME | SIZE | DRAWING NO. | REV. |
|  |  | DIST |          |            | A    | 005046-01ME |      |

**CERTIFICATION DATA SHEET**

Model#: 182TTDW7411 AA WINDING#: T8(4-8)23 NONE 2  
 CONN. DIAGRAM: 005046.01ME ASSEMBLY: F1 ONLY  
 OUTLINE: 035539-950

**TYPICAL MOTOR PERFORMANCE DATA**

| HP    | KW       | SYNC. RPM | F.L. RPM | FRAME | ENCLOSURE | KVA CODE | DESIGN |
|-------|----------|-----------|----------|-------|-----------|----------|--------|
| 2&1/2 | 1.49&.37 | 900       | 1765&885 | 182T  | DP        | K        | 2VT    |

| PH | Hz    | VOLTS | FL AMPS  | START TYPE      | DUTY       | INSL | S.F       | AMB°C | ELEVATION |
|----|-------|-------|----------|-----------------|------------|------|-----------|-------|-----------|
| 3  | 60/60 | 460   | 2.8&2.15 | ACROSS THE LINE | CONTINUOUS | F4   | 1.15/1.15 | 40    | 3300      |

| FULL LOAD EFF: 82&53.8 | 3/4 LOAD EFF: 49  | 1/2 LOAD EFF: 39.4 | GTD. EFF | ELEC. TYPE      | NO LOAD AMPS |
|------------------------|-------------------|--------------------|----------|-----------------|--------------|
| FULL LOAD PF: 81&40.5  | 3/4 LOAD PF: 34.9 | 1/2 LOAD PF: 28.9  | 0        | SQ CAGE IND RUN | -            |

| F.L. TORQUE | LOCKED ROTOR AMPS | L.R. TORQUE | B.D. TORQUE | F.L. RISE°C |
|-------------|-------------------|-------------|-------------|-------------|
| 47.5 LB-FT  | -                 | - LB-FT -   | - LB-FT -   | 36          |

| SOUND PRESSURE @ 3 FT. | SOUND POWER | ROTOR WK^2 | MAX. WK^2 | SAFE STALL TIME | STARTS /HOUR | APPROX. MOTOR WGT |
|------------------------|-------------|------------|-----------|-----------------|--------------|-------------------|
| 0 dBA                  | 10 dBA      | 0 LB-FT^2  | 0 LB-FT^2 | 10 SEC.         | 0            | 0 LBS.            |

**\*\*\* SUPPLEMENTAL INFORMATION \*\*\***

| DE BRACKET TYPE | ODE BRACKET TYPE | MOUNT TYPE | ORIENTATION | SEVERE DUTY | HAZARDOUS LOCATION | DRIP COVER | SCREENS | PAINT         |
|-----------------|------------------|------------|-------------|-------------|--------------------|------------|---------|---------------|
| STANDARD        | STANDARD         | RIGID      | HORIZONTAL  | FALSE       | NONE               | FALSE      | NONE    | BLUE (ENAMEL) |

| BEARINGS |      | GREASE     | SHAFT TYPE | SPECIAL DE | SPECIAL ODE | SHAFT MATERIAL    | FRAME MATERIAL |
|----------|------|------------|------------|------------|-------------|-------------------|----------------|
| DE       | OPE  |            |            |            |             |                   |                |
| BALL     | BALL | POLYREX EM | T          | NONE       | NONE        | AISI 1045 (C-240) | ROLLED STEEL   |
| 6206     | 6205 |            |            |            |             |                   |                |

| THERMO-PROTECTORS |            |          |          | THERMISTORS | CONTROL | SPACE /n HEATERS |
|-------------------|------------|----------|----------|-------------|---------|------------------|
| THERMOSTATS       | PROTECTORS | WDG RTDs | BRG RTDs |             |         |                  |
| NONE              | NOT        | NONE     | NONE     | NONE        | FALSE   | NONE VOLTS       |

If Inverter equals NONE, contact factory for further information

|                           |
|---------------------------|
| INVERTER TORQUE: NONE     |
| INV. HP SPEED RANGE: NONE |
| ENCODER: NONE             |
| NONE NONE                 |
| NONE NONE PPR             |
| BRAKE: NONE NONE          |
| NONE P/N NONE             |
| NONE NONE                 |
| NONE FT-LB NONE V NONE Hz |

\*  
N  
O  
T  
E  
S  
\*

DATE: 06/27/2017 01:58:02 AM  
 FORM 3531 REV.3 02/07/99  
 \*\* Subject to change without notice.



**MARATHON ELECTRIC CORPORATION**  
TYPICAL PERFORMANCE CURVE for AC MOTOR

Customer

Curve at

460

Volts

HP 2&1/2

PHASE 3

Model No 182TTDW7411

60

HZ

VOLTS 460&460

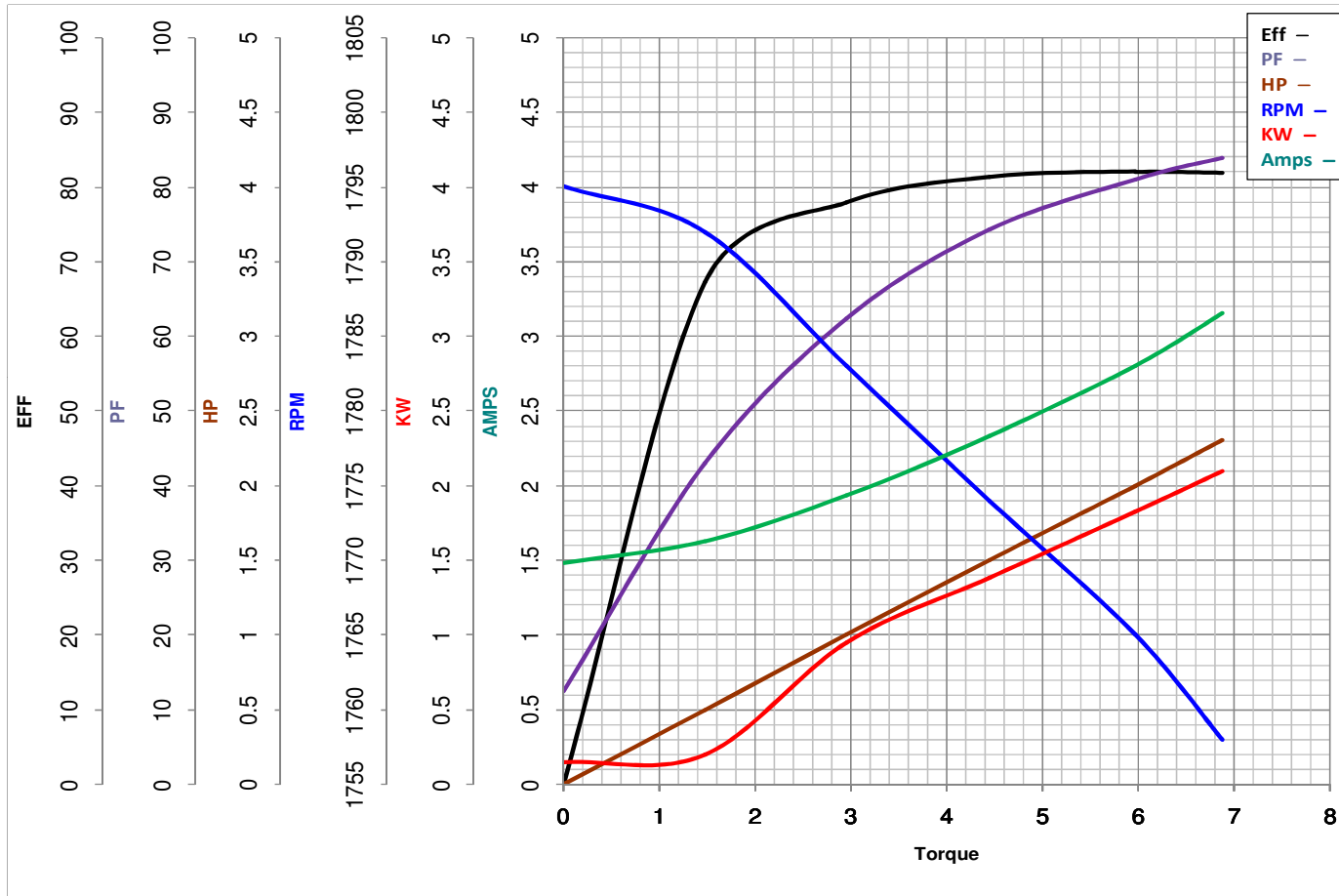
Catalog No Y467A

2

HP

HZ 60&60

RPM 1765&885



Torque in Lb.Ft

FL TORQUE 5.96 Lb.Ft  
BD TORQUE 19.4 Lb.Ft  
LR TORQUE 11.16 Lb.Ft

FL AMPS 2.8  
PU TORQUE 11.3 Lb.Ft  
LR AMPS 22.4

WINDING T8(4-8)23-2

Date 1/25/2019