

PRODUCT INFORMATION PACKET

Model No: 182TTDW7211

Catalog No: Y409A

Multispeed Motor, 2 & 0.89 HP, 3 Ph, 60 & 60 Hz, 460 & 460 V, 1800 & 1800 RPM, 182T Frame, DP



Regal and Marathon are trademarks of Regal Rexnord Corporation or one of its affiliated companies.

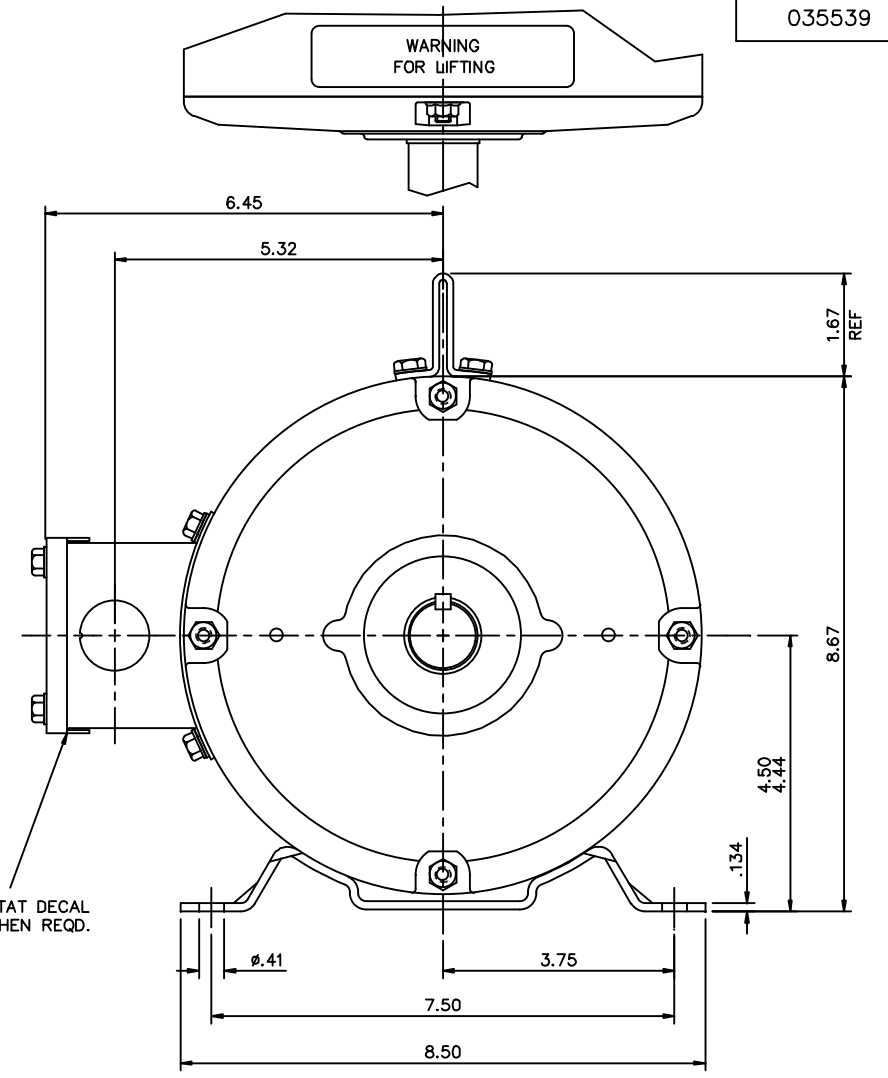
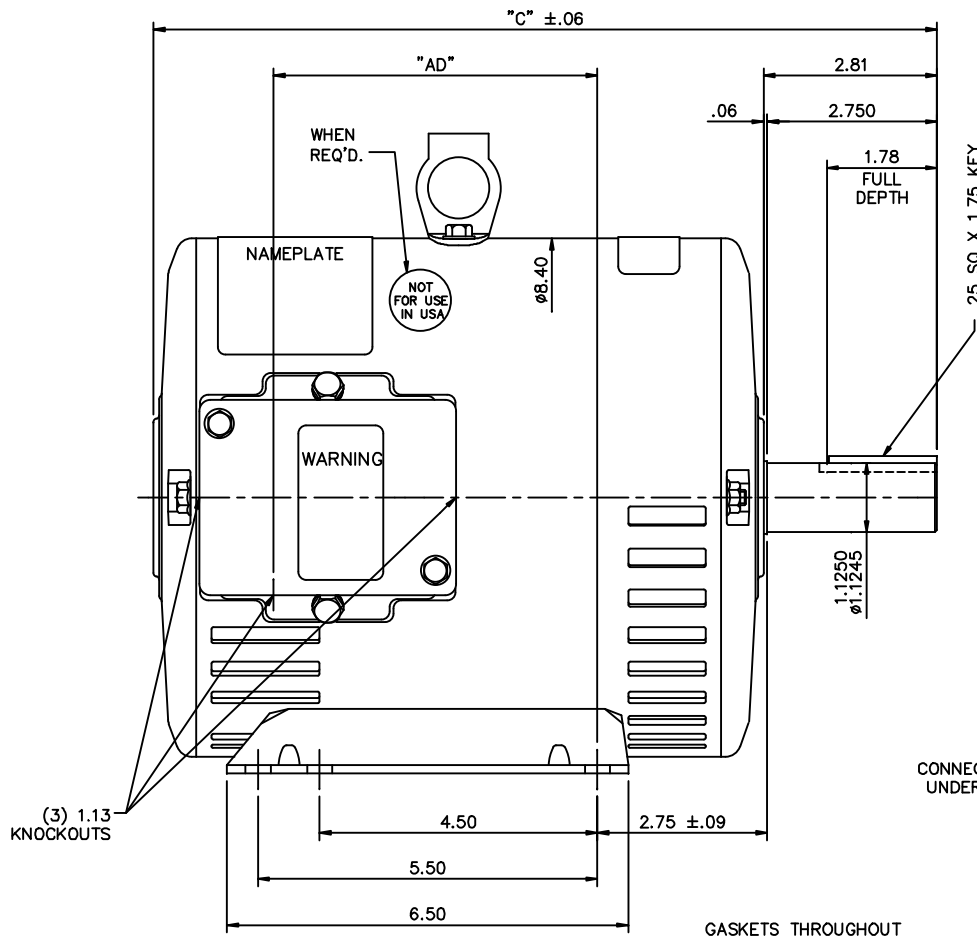
©2023 Regal Rexnord Corporation, All Rights Reserved. MC017097E

Nameplate Specifications

Phase	3	Output HP	2 & 0.89 Hp
Output KW	1.5 & 0.66 kW	Voltage	460 & 460 V
Speed	1765 & 1170 rpm	Service Factor	1.15 & 1.15
Frame	182T	Enclosure	Drip Proof
Thermal Protection	No Protection	Efficiency	80 & 75.5 %
Ambient Temperature	40 °C	Frequency	60 & 60 Hz
Current	3.2 & 1.95 A	Power Factor	73.2
Duty	Continuous	Insulation Class	F
Design Code	2VT	KVA Code	M
Drive End Bearing Size	6206	Opp Drive End Bearing Size	6205
UL	Recognized	CSA	Y
CE	Y	IP Code	22
Number of Speeds	2		

Technical Specifications

Electrical Type	Squirrel Cage Induction Run	Starting Method	Across The Line
Poles	4//6	Rotation	Reversible
Resistance Main	5.345 Ohms	Mounting	Rigid Base
Motor Orientation	Horizontal	Drive End Bearing	Ball
Opp Drive End Bearing	Ball	Frame Material	Rolled Steel
Shaft Type	T	Overall Length	12.69 in
Frame Length	8.50 in	Shaft Diameter	1.125 in
Shaft Extension	2.81 in	Assembly/Box Mounting	F1 ONLY
Connection Drawing	005046.01ME	Outline Drawing	035539-850

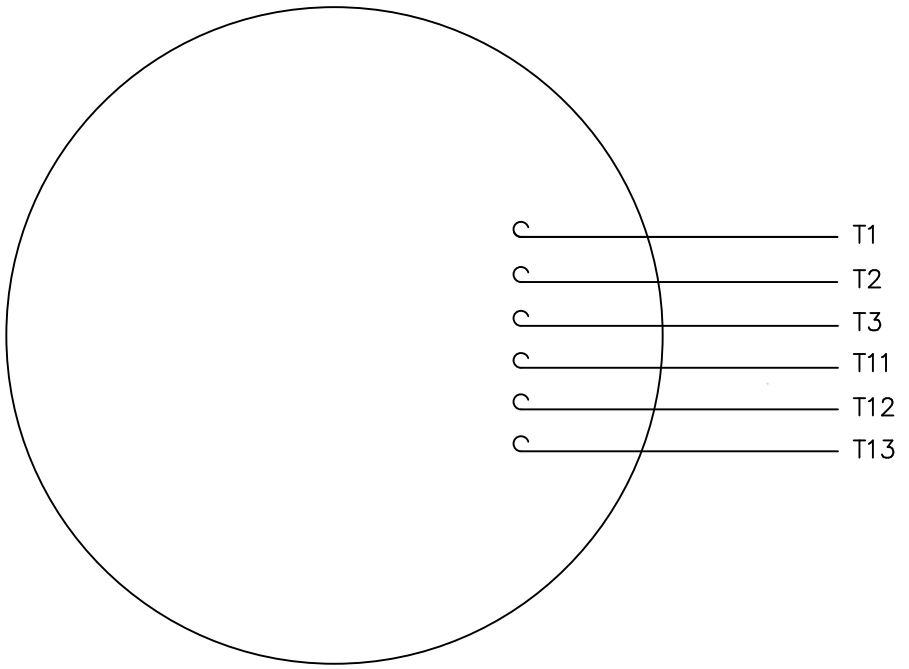


GASKETS THROUGHOUT

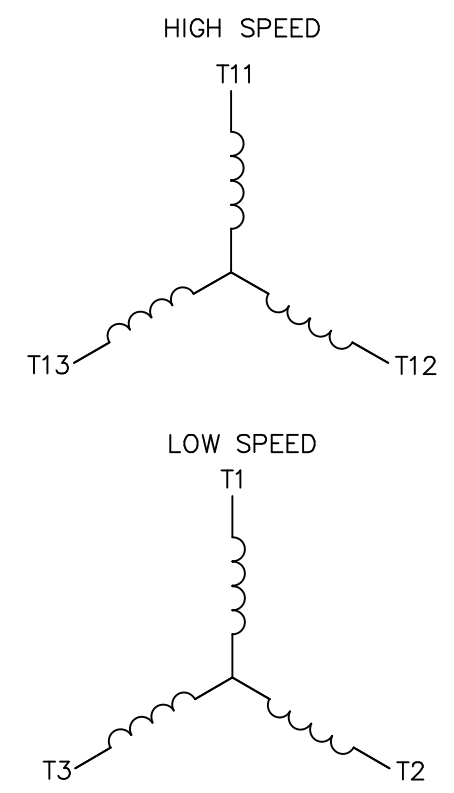
DASH NO.	"C"	"AD"
850	12.69	5.25
900	13.19	5.75
950	13.69	6.25
1000	14.19	6.75
1050	14.69	7.25
1100	15.19	7.75
1150	15.69	8.25

				TOLERANCES UNLESS SPECIFIED		MARATHON ELECTRIC		DRAWN YS 07/23/07	
				DEC.	INCHES			CHK	
				.X	±.1			APPD	
				.XX	±.03	TITLE		SCALE	1-2
02	SHOWN "NOT FOR USE IN USA" DECAL LOCATION			JD	05/07/12	OUTLINE - 180T FRAME		REF	035464
01	CHANGED TO NEW CONDUIT BOX 022737			YS	03/19/08	DRIP PROOF - RIGID			
				.XXX	±.005	MAT'L		FMF	
				.XXXX	±.0005	GENERAL PURPOSE		PREV	
NO.	REVISION			BY & DATE	CHK	ANG	FINISH		
THIS DRAWING IN DESIGN AND DETAIL IS OUR PROPERTY AND MUST NOT BE USED EXCEPT IN CONNECTION WITH OUR WORK ALL RIGHTS OF DESIGN AND INVENTION ARE RESERVED THIS IS AN ELECTRONICALLY GENERATED DOCUMENT - DO NOT SCALE THIS PRINT				RFP		CAD FILE	035539	SIZE	DRAWING NO.
				DIST				B	035539
									REV.
									02

VIEW FROM OUTSIDE OF MOTOR AT SWITCH END.



LINE LEADS



	L1	L2	L3
HIGH SPEED	T11	T12	T13
LOW SPEED	T1	T2	T3

		TOLERANCES UNLESS SPECIFIED			
		DEC.	INCHES		
		.X	±.1		
		.XX	±.01		
		.XXX	±.005		
		.XXXX	±.0005		
NO.	REVISION	BY & DATE	CHK	ANG	±1/2'



TITLE: EXTERNAL WIRING DIAGRAM TYPE "T" W/O PROTECTOR
 MAT'L. DECAL - 004040 - 2 WDG./2 SPEED 1Y-1Y
 FINISH: MARATHON

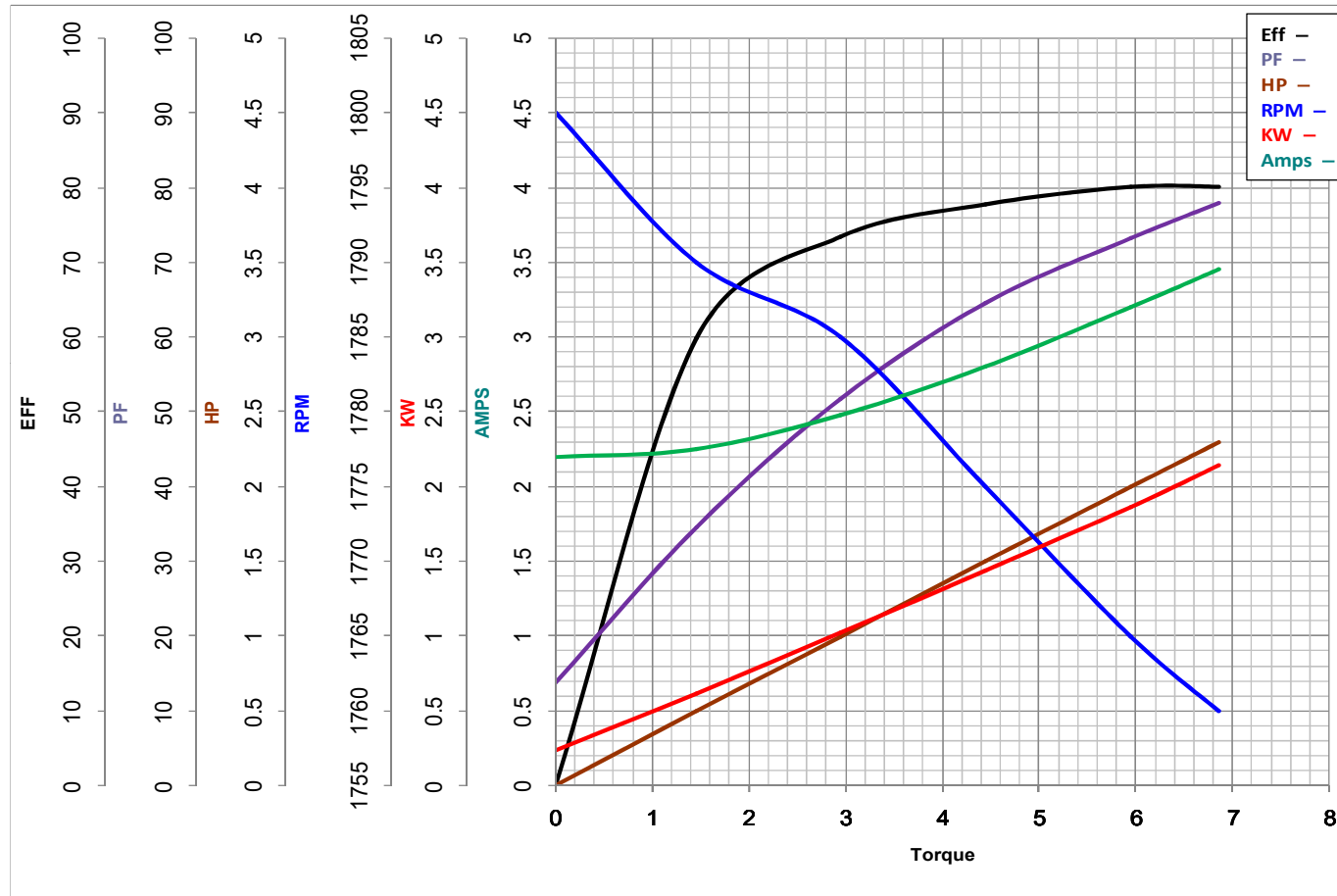
DRAWN	SW 06/19/02
CHK	MN 06/19/02
APPD	
SCALE	1=1
REF	
FMF	
PREV	

THIS DRAWING IN DESIGN AND DETAIL IS OUR PROPERTY AND MUST NOT BE USED EXCEPT IN CONNECTION WITH OUR WORK ALL RIGHTS OF DESIGN AND INVENTION ARE RESERVED THIS IS AN ELECTRONICALLY GENERATED DOCUMENT - DO NOT SCALE THIS PRINT		RFP	CAD FILE	00504601ME	SIZE	DRAWING NO.	REV.
		DIST			A	005046-01ME	



MARATHON ELECTRIC CORPORATION
TYPICAL PERFORMANCE CURVE for AC MOTOR

Customer _____ Curve at 460 Volts HP 2&0.89 PHASE 3
 Model No 182TTDW7211 60 HZ
2 HP VOLTS 460&460
 Catalog No Y409A HZ 60&60 RPM 1765&1170



FL TORQUE	<u>5.95</u>	LB-FT	FL AMPS	<u>3.2</u>	
BD TORQUE	<u>23.7</u>	LB-FT	PU TORQUE	<u>13.6</u>	LB-FT
LR TORQUE	<u>13.13</u>	LB-FT	LR AMPS	<u>23.5</u>	
WINDING	T8(4-6)11-2		Date	1/9/2019	