

PRODUCT INFORMATION PACKET

Model No: 182TTDW7203

Catalog No: Y485A

Other Purpose Motor, 3 & 0.75 HP, 3 Ph, 60 & 60 Hz, 460 & 460 V, 1800 & 1800 RPM, 182T Frame, DP



Regal and Marathon are trademarks of Regal Rexnord Corporation or one of its affiliated companies.

©2023 Regal Rexnord Corporation, All Rights Reserved. MC017097E

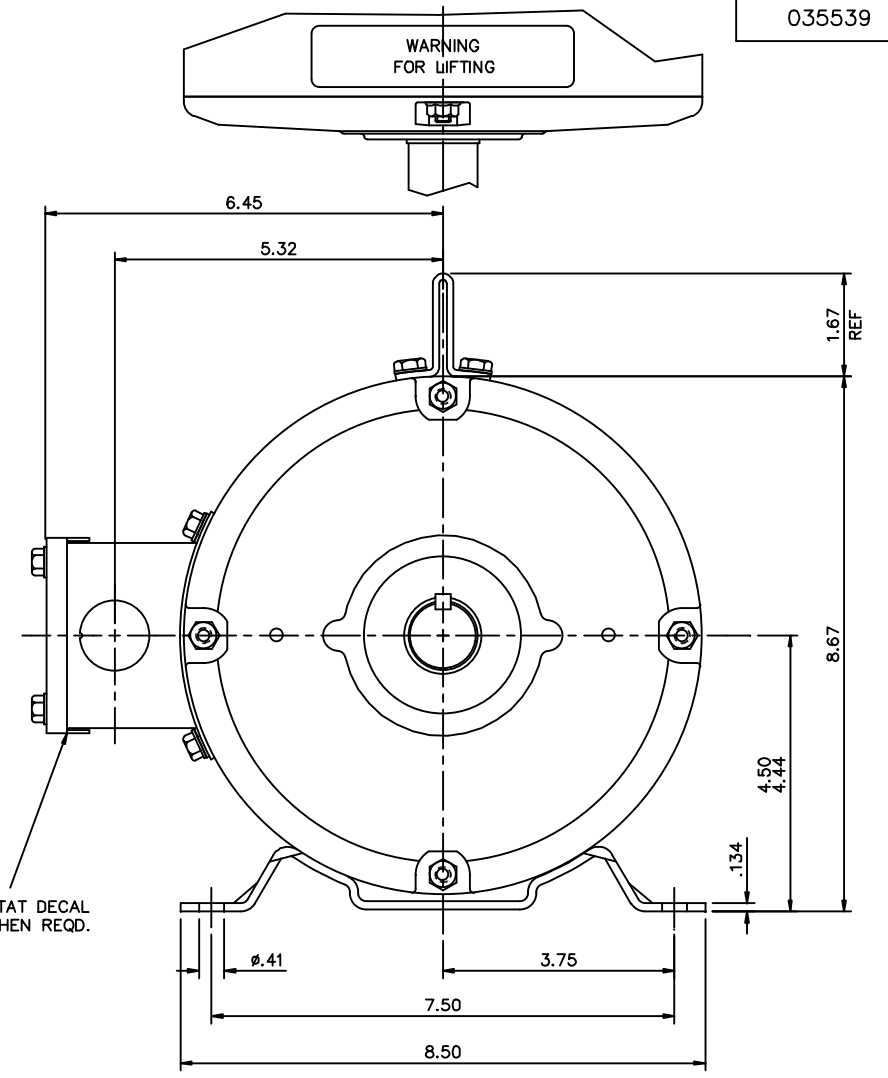
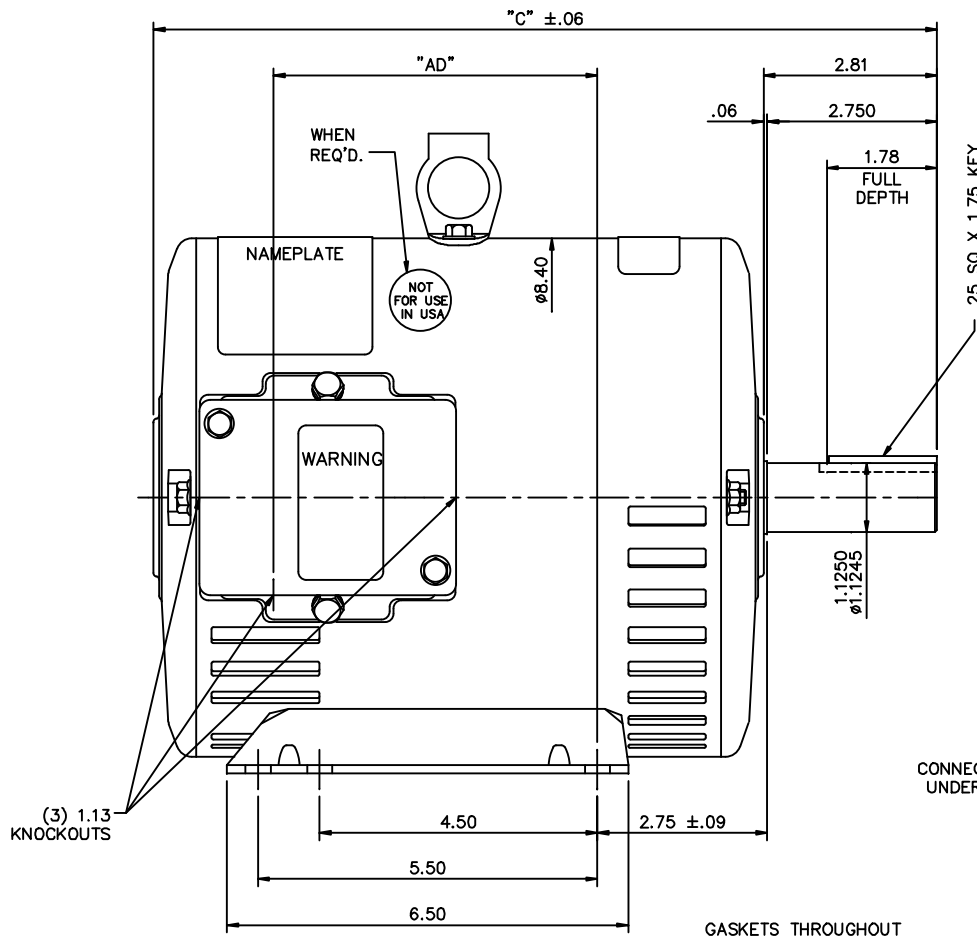


Nameplate Specifications

Phase	3	Output HP	3 & 0.75 Hp
Output KW	2.2 & 0.56 kW	Voltage	460 & 460 V
Speed	1760 & 875 rpm	Service Factor	1.15 & 1.15
Frame	182T	Enclosure	Drip Proof
Thermal Protection	No Protection	Efficiency	84.5 & 74 %
Ambient Temperature	40 °C	Frequency	60 & 60 Hz
Current	4.1 & 1.8 A	Power Factor	80.9
Duty	Continuous	Insulation Class	F
Design Code	1VT	KVA Code	L
Drive End Bearing Size	6206	Opp Drive End Bearing Size	6205
UL	Recognized	CSA	Y
CE	Y	IP Code	22
Number of Speeds	2		

Technical Specifications

Electrical Type	Squirrel Cage Induction Run	Starting Method	Across The Line
Poles	4/8	Rotation	Reversible
Resistance Main	0 Ohms	Mounting	Rigid Base
Motor Orientation	Horizontal	Drive End Bearing	Ball
Opp Drive End Bearing	Ball	Frame Material	Rolled Steel
Shaft Type	T	Overall Length	13.19 in
Frame Length	9.00 in	Shaft Diameter	1.125 in
Shaft Extension	2.81 in	Assembly/Box Mounting	F1 Only
Connection Drawing	005200.01ME	Outline Drawing	035539-950

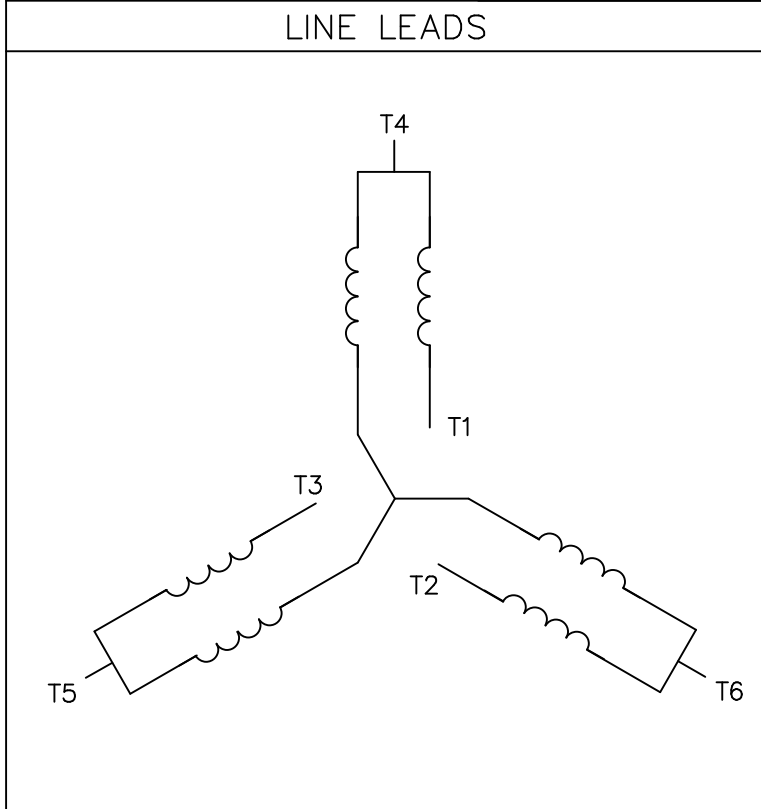
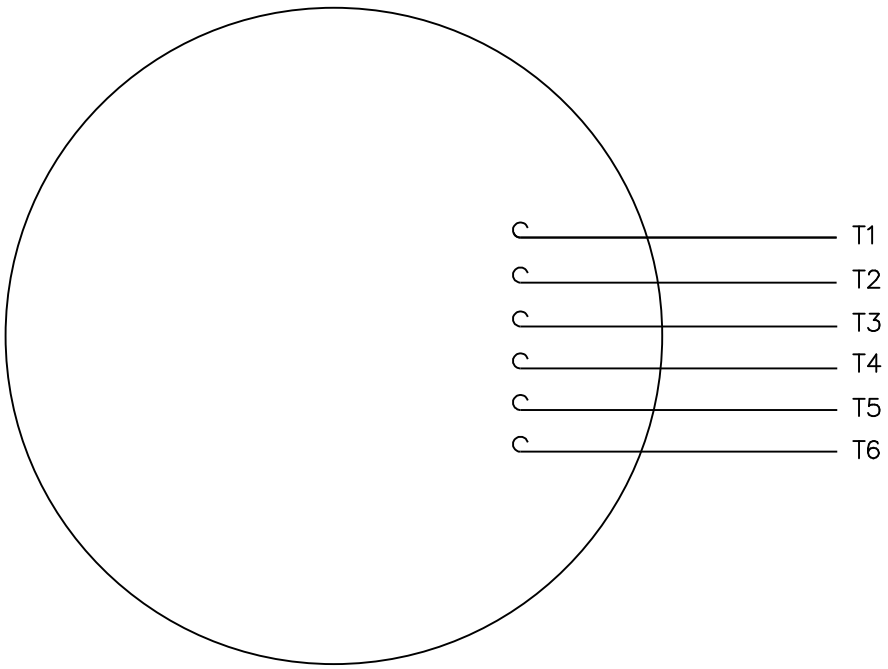


GASKETS THROUGHOUT

DASH NO.	"C"	"AD"
850	12.69	5.25
900	13.19	5.75
950	13.69	6.25
1000	14.19	6.75
1050	14.69	7.25
1100	15.19	7.75
1150	15.69	8.25

				TOLERANCES UNLESS SPECIFIED		MARATHON ELECTRIC		DRAWN YS 07/23/07	
				DEC.	INCHES			CHK	
				.X	±.1			APPD	
				.XX	±.03	TITLE		SCALE	1-2
02	SHOWN "NOT FOR USE IN USA" DECAL LOCATION			JD	05/07/12	OUTLINE - 180T FRAME		REF	035464
01	CHANGED TO NEW CONDUIT BOX 022737			YS	03/19/08	DRIP PROOF - RIGID			
				.XXX	±.005	MAT'L		FMF	
				.XXXX	±.0005	GENERAL PURPOSE		PREV	
NO.	REVISION			BY & DATE	CHK	ANG	FINISH		
THIS DRAWING IN DESIGN AND DETAIL IS OUR PROPERTY AND MUST NOT BE USED EXCEPT IN CONNECTION WITH OUR WORK ALL RIGHTS OF DESIGN AND INVENTION ARE RESERVED THIS IS AN ELECTRONICALLY GENERATED DOCUMENT - DO NOT SCALE THIS PRINT				RFP		CAD FILE	035539	SIZE	DRAWING NO.
				DIST				B	035539
									REV.
									02

VIEW FROM OUTSIDE OF MOTOR AT SWITCH END.



SPEED	L1	L2	L3	JOIN	SEPARATE
HIGH	T6	T4	T5	(T1,T2,T3)	
LOW	T1	T2	T3		(T4)(T5)(T6)

NO.	REVISION	BY & DATE	CHK	TOLERANCES UNLESS SPECIFIED	
				DEC.	INCHES
				.X	±.1
				.XX	±.01
				.XXX	±.005
				.XXXX	±.0005
				ANG	±1/2°



TITLE: EXTERNAL WIRING DIAGRAM TYPE "T" W/O PROTECTOR
 MAT'L: DECAL - 004183/080066
 FINISH:

DRAWN: MGM 12/2/02
 CHK:
 APPD:
 SCALE: 1=1
 REF: 080066
 FMF: 83648D1
 PREV:

THIS DRAWING IN DESIGN AND DETAIL IS OUR PROPERTY AND MUST NOT BE USED EXCEPT IN CONNECTION WITH OUR WORK ALL RIGHTS OF DESIGN AND INVENTION ARE RESERVED THIS IS AN ELECTRONICALLY GENERATED DOCUMENT - DO NOT SCALE THIS PRINT		RFP	CAD FILE	00520001ME	SIZE	DRAWING NO.	REV.
		DIST			A	005200-01ME	

CERTIFICATION DATA SHEET

Model#: 182TTDW7203 AA **WINDING#:** T8(4-8)19 NONE 2
CONN. DIAGRAM: 005200.01ME **ASSEMBLY:** F1 ONLY
OUTLINE: 035539-900

TYPICAL MOTOR PERFORMANCE DATA

HP	KW	SYNC. RPM	F.L. RPM	FRAME	ENCLOSURE	KVA CODE	DESIGN		
3&3/4	2.24&.56	900	1760&875	182T	DP	L	1VT		
PH	Hz	VOLTS	FL AMPS	START TYPE	DUTY	INSL	S.F	AMB°C	ELEVATION
3	60/60	460	4.1&1.8	ACROSS THE LINE	CONTINUOUS	F4	1.15/1.15	40	3300
FULL LOAD EFF: 84.5&74		3/4 LOAD EFF: 72	1/2 LOAD EFF: 66.5	GTD. EFF		ELEC. TYPE		NO LOAD AMPS	
FULL LOAD PF: 80.9&52.5		3/4 LOAD PF: 45.5	1/2 LOAD PF: 35.5	0		SQ CAGE IND RUN		1.4	
F.L. TORQUE		LOCKED ROTOR AMPS		L.R. TORQUE		B.D. TORQUE		F.L. RISE°C	
4.51 LB-FT		7.7		9.15 LB-FT 203		13.3 LB-FT 295		40	
SOUND PRESSURE @ 3 FT.	SOUND POWER	ROTOR WK^2	MAX. WK^2	SAFE STALL TIME	STARTS /HOUR	APPROX. MOTOR WGT			
0 dBA	10 dBA	0.32 LB-FT^2	0 LB-FT^2	10 SEC.	0	70 LBS.			

***** SUPPLEMENTAL INFORMATION *****

DE BRACKET TYPE	ODE BRACKET TYPE	MOUNT TYPE	ORIENTATION	SEVERE DUTY	HAZARDOUS LOCATION	DRIP COVER	SCREENS	PAINT
STANDARD	STANDARD	RIGID	HORIZONTAL	FALSE	NONE	FALSE	NONE	BLUE (ENAMEL)

BEARINGS		GREASE	SHAFT TYPE	SPECIAL DE	SPECIAL ODE	SHAFT MATERIAL	FRAME MATERIAL
DE	OPE						
BALL	BALL						
6206	6205	POLYREX EM	T	NONE	NONE	AISI 1045 (C-240)	ROLLED STEEL

THERMO-PROTECTORS				THERMISTORS	CONTROL	SPACE /n HEATERS
THERMOSTATS	PROTECTORS	WDG RTDs	BRG RTDs			
NONE	NOT	NONE	NONE	NONE	FALSE	NONE VOLTS

If Inverter equals NONE, contact factory for further information

INVERTER TORQUE: NONE
INV. HP SPEED RANGE: NONE
ENCODER: NONE
NONE NONE
NONE NONE PPR
BRAKE: NONE NONE
NONE P/N NONE
NONE NONE
NONE FT-LB NONE V NONE Hz

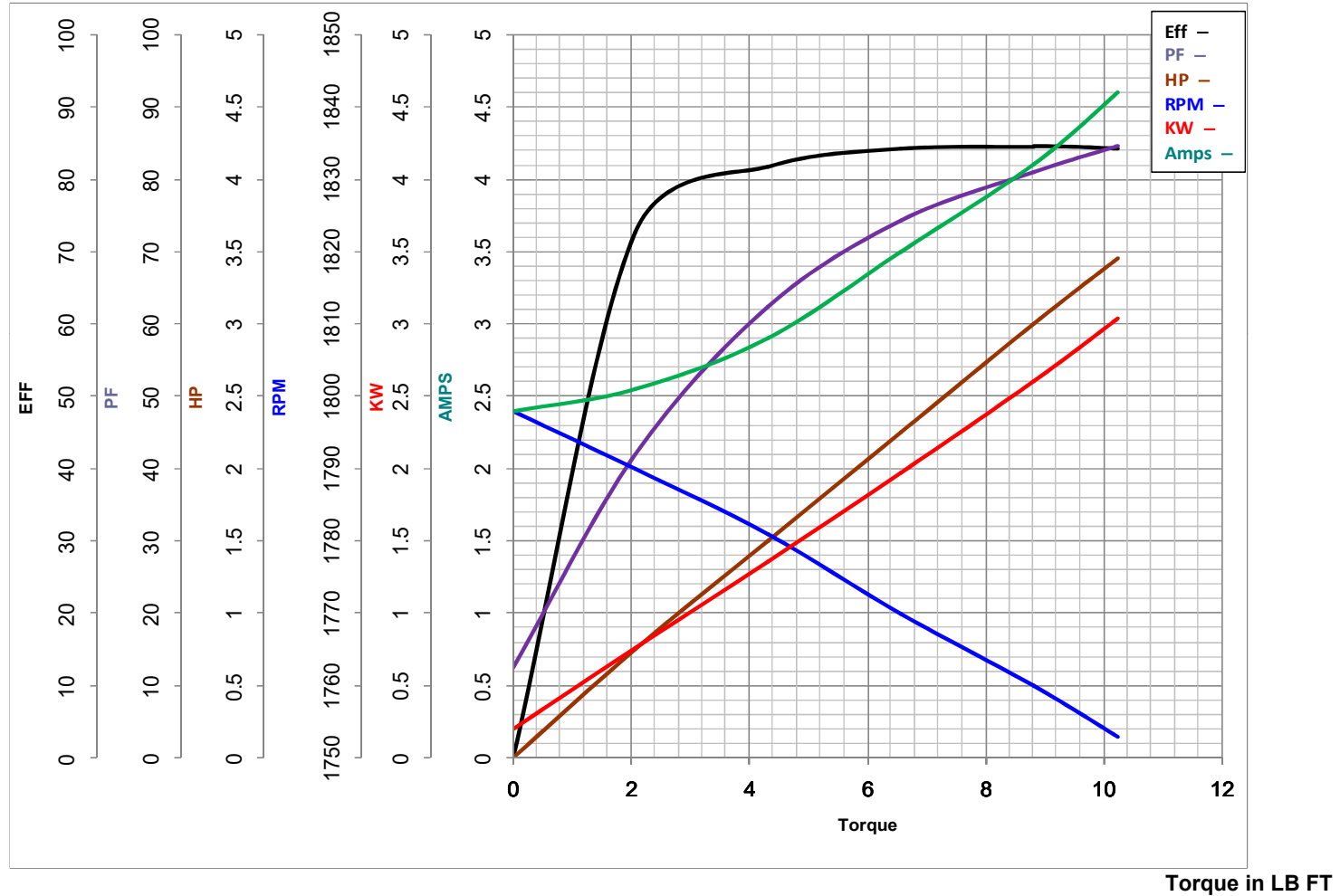
*
N
O
T
E
S
*

DATE: 06/27/2017 01:54:37 AM
 FORM 3531 REV.3 02/07/99
 ** Subject to change without notice.



MARATHON ELECTRIC CORPORATION
TYPICAL PERFORMANCE CURVE for AC MOTOR

Customer _____ Curve at 460 Volts HP 3&3/4 PHASE 3
 Model No 182TTDW7203 60 HZ 3 HP VOLTS 460&460
 Catalog No Y485A HZ 60&60 RPM 1760&875



FL TORQUE	<u>8.82</u>	LB FT	FL AMPS	<u>4.1</u>	
BD TORQUE	<u>36.3</u>	LB FT	PU TORQUE	<u>22.0</u>	LB FT
LR TORQUE	<u>24.6</u>	LB FT	LR AMPS	<u>36.9</u>	
WINDING	T8(4-8)19-2		Date	1/9/2019	