

PRODUCT INFORMATION PACKET

marathon®
Motors

Model No: 182TTDW4339

Catalog No: U162A

Close-Coupled Pump Motor, 3 & 2 HP, 3 Ph, 60 & 50 Hz, 230/460 & 190/380 V, 1800 & 1500 RPM,
182JPV Frame, DP

Regal and Marathon are trademarks of Regal Rexnord Corporation or one of its affiliated companies.

©2023 Regal Rexnord Corporation, All Rights Reserved. MC017097E

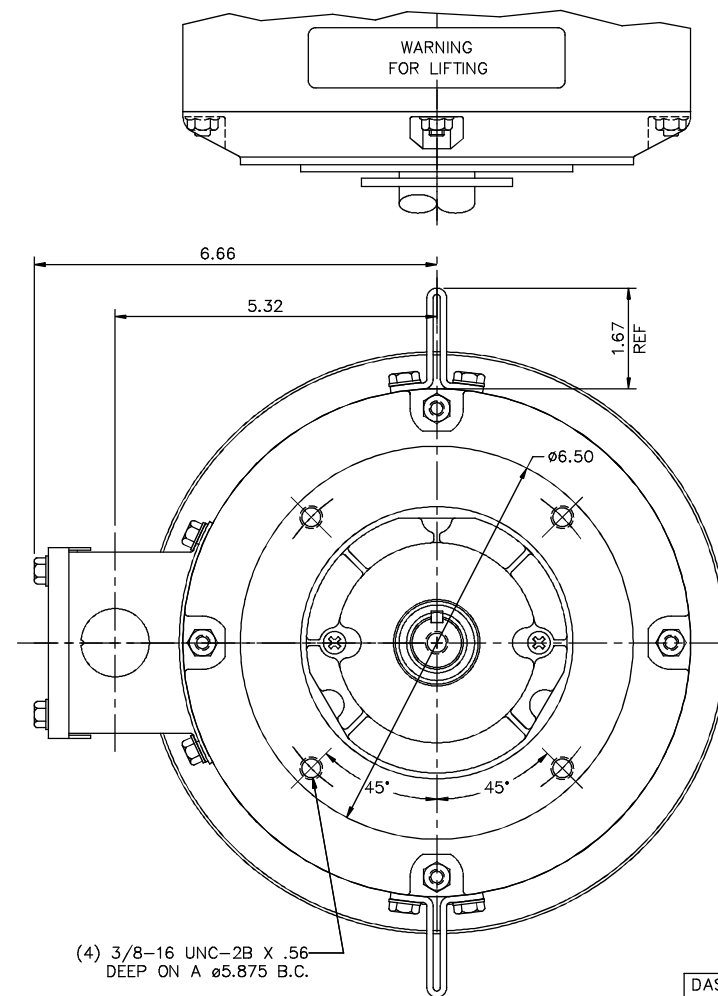
RegalRexnord

Nameplate Specifications

Phase	3	Output HP	3 & 2 Hp
Output KW	2.2 & 1.5 kW	Voltage	230/460 & 190/380 V
Speed	1765 & 1480 rpm	Service Factor	1.15 & 1.15
Frame	182JPV	Enclosure	Drip Proof
Thermal Protection	No Protection	Efficiency	86.5 & 87 %
Ambient Temperature	40 °C	Frequency	60 & 50 Hz
Current	8.8/4.4 & 7.8/3.9 A	Power Factor	73.8
Duty	Continuous	Insulation Class	F
Design Code	B	KVA Code	K
Drive End Bearing Size	207	Opp Drive End Bearing Size	205
UL	Recognized	CSA	Y
CE	Y	IP Code	22
Number of Speeds	1		

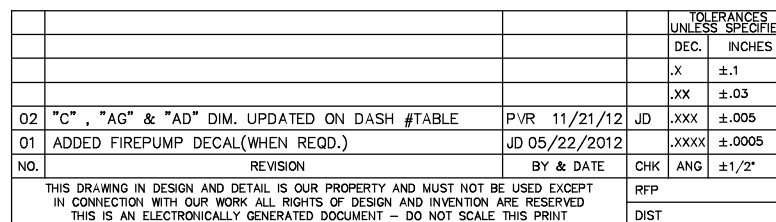
Technical Specifications

Electrical Type	Squirrel Cage Induction Run	Starting Method	Across The Line
Poles	4	Rotation	Reversible
Resistance Main	4.85 Ohms	Mounting	Round
Motor Orientation	Shaft Down	Drive End Bearing	Ball
Opp Drive End Bearing	Ball	Frame Material	Rolled Steel
Shaft Type	JP	Overall Length	18.01 in
Frame Length	9.00 in	Shaft Diameter	0.880 in
Shaft Extension	7.34 in	Assembly/Box Mounting	F1/F2 Capable
Connection Drawing	005010.01ME	Outline Drawing	035764-900



DRAWN	PN 9/27/2010
CHK	ST 9/27/2010
APPD	
SCALE	1=2
REF	035547
FMF	
PREV	

GASKETS THROUGHOUT



TITLE	OUTLINE- 180JM FRAME DRIP PROOF- "C" FACE- JP PUMP
-------	---

DRAWN	PN 9/27/2010
CHK	ST 9/27/2010
APPD	
SCALE	1=2
REF	035547
FMF	
PREV	

RFP	CAD FILE	035764	SIZE	DRAWING NO.	REV.
DIST			B	035764	02

VIEW FROM OUTSIDE OF MOTOR AT SWITCH END.



LINE LEADS



VOLTAGE	L1	L2	L3	JOIN & INSULATE
HIGH	T1	T2	T3	(T4,T7) (T5,T8) (T6,T9)
LOW	T1,T7	T2,T8	T3,T9	T4,T5,T6

				TOLERANCES UNLESS SPECIFIED				DRAWN RDW 04/12/02		
				DEC.	INCHES			CHK		
				.X	±.1			APPD		
				.XX	±.01	TITLE EXTERNAL WIRING DIAGRAM 3 PHASE W/O PROTECTOR		SCALE 1=1		
				.XXX	±.005			REF FIG.2-51		
				.XXXX	±.0005	MAT'L. DECAL - 004014		FMF		
NO.	REVISION	BY & DATE	CHK	ANG	±1/2"	FINISH		PREV		
THIS DRAWING IN DESIGN AND DETAIL IS OUR PROPERTY AND MUST NOT BE USED EXCEPT IN CONNECTION WITH OUR WORK ALL RIGHTS OF DESIGN AND INVENTION ARE RESERVED THIS IS AN ELECTRONICALLY GENERATED DOCUMENT - DO NOT SCALE THIS PRINT			RFP 04/12/02		CAD FILE 00501001ME		SIZE A	DRAWING NO. 005010-01ME		REV.
			DIST							

THIS DRAWING IN DESIGN AND DETAIL IS OUR PROPERTY AND MUST NOT BE USED EXCEPT
IN CONNECTION WITH OUR WORK ALL RIGHTS OF DESIGN AND INVENTION ARE RESERVED
THIS IS AN ELECTRONICALLY GENERATED DOCUMENT - DO NOT SCALE THIS PRINT