

# PRODUCT INFORMATION PACKET



Model No: 182TTDW4156

Catalog No: U1426

Other Purpose Motor, 3 & 2 HP, 3 Ph, 60 & 50 Hz, 208-230/460 & 190/380 V, 1800 & 1500 RPM,  
182T Frame, DP

Regal and Marathon are trademarks of Regal Rexnord Corporation or one of its affiliated companies.

©2023 Regal Rexnord Corporation, All Rights Reserved. MC017097E

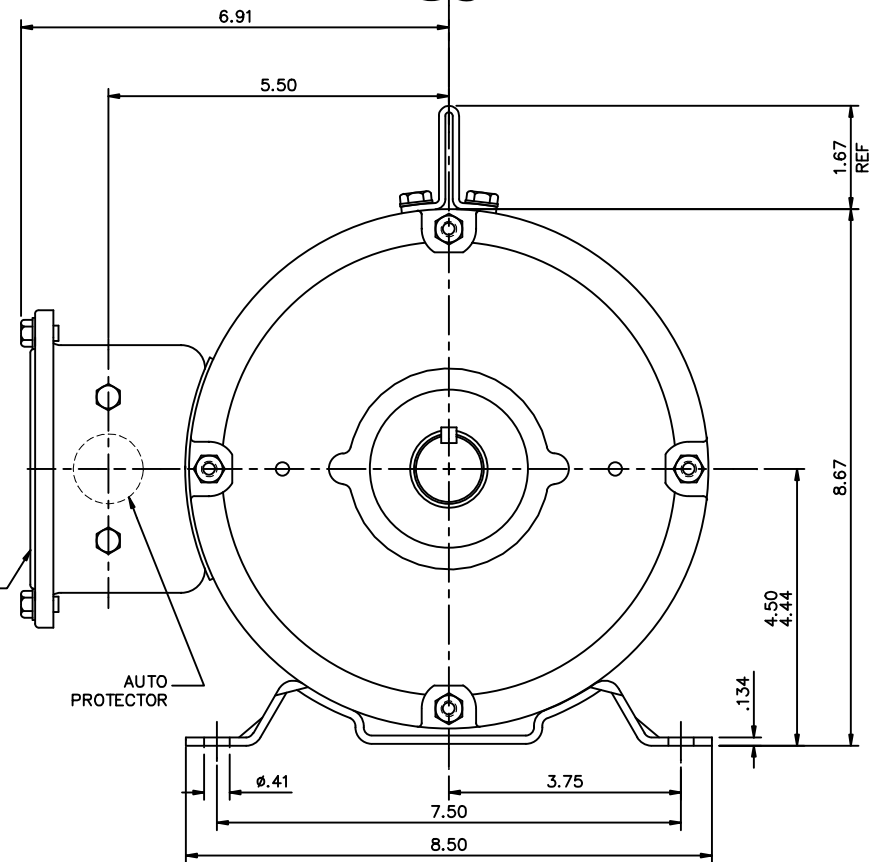


### Nameplate Specifications

|                        |                       |                            |                         |
|------------------------|-----------------------|----------------------------|-------------------------|
| Phase                  | 3                     | Output HP                  | 3 & 2 Hp                |
| Output KW              | 2.2 & 1.5 kW          | Voltage                    | 208-230/460 & 190/380 V |
| Speed                  | 1765 & 1480 rpm       | Service Factor             | 1.15 & 1.15             |
| Frame                  | 182T                  | Enclosure                  | Drip Proof              |
| Thermal Protection     | Automatic             | Efficiency                 | 86.5 & 87 %             |
| Ambient Temperature    | 40 °C                 | Frequency                  | 60 & 50 Hz              |
| Current                | 9-8.8/4.4 & 7.8/3.9 A | Power Factor               | 73.8                    |
| Duty                   | Continuous            | Insulation Class           | F                       |
| Design Code            | B                     | KVA Code                   | K                       |
| Drive End Bearing Size | 6206                  | Opp Drive End Bearing Size | 6205                    |
| UL                     | Recognized            | CSA                        | Y                       |
| CE                     | Y                     | IP Code                    | 22                      |
| Number of Speeds       | 1                     |                            |                         |

### Technical Specifications

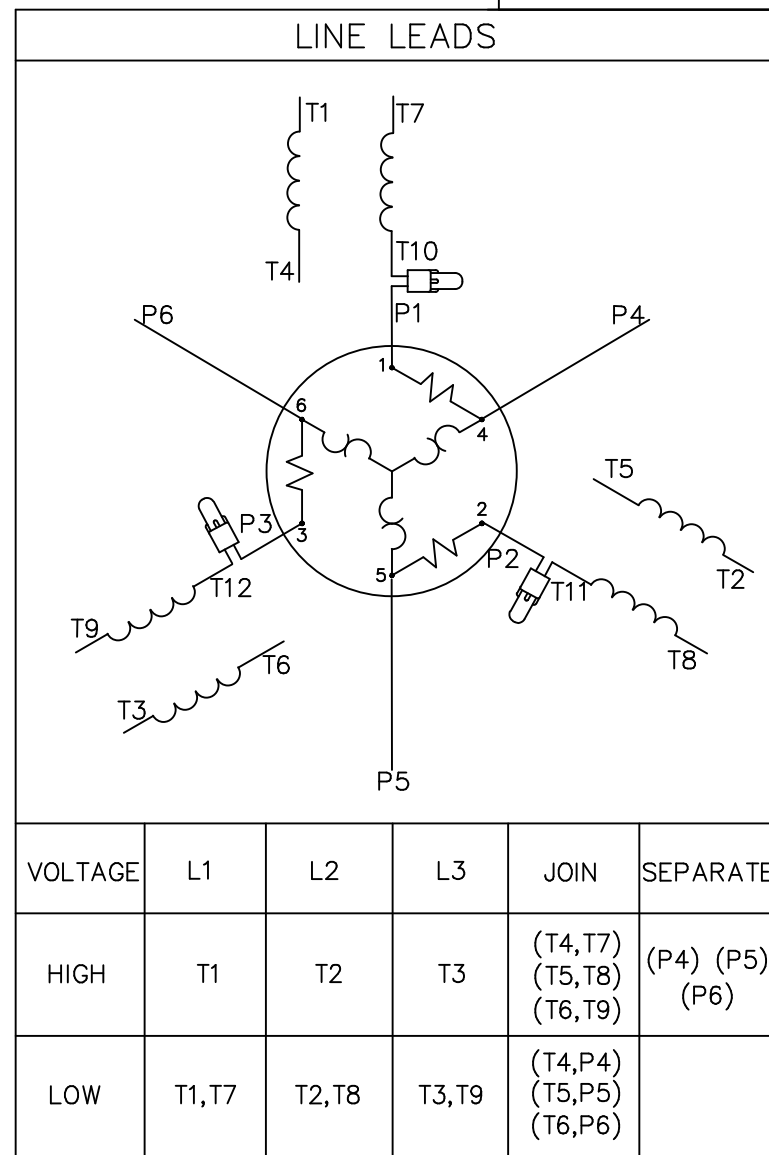
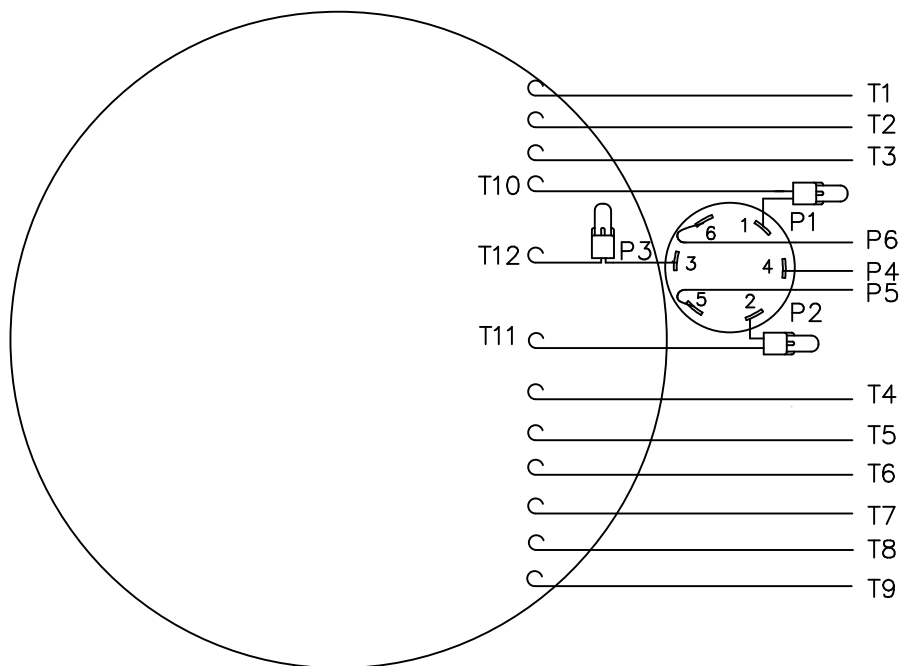
|                       |                             |                       |                 |
|-----------------------|-----------------------------|-----------------------|-----------------|
| Electrical Type       | Squirrel Cage Induction Run | Starting Method       | Across The Line |
| Poles                 | 4                           | Rotation              | Reversible      |
| Resistance Main       | 4.85 Ohms                   | Mounting              | Rigid Base      |
| Motor Orientation     | Horizontal                  | Drive End Bearing     | Ball            |
| Opp Drive End Bearing | Ball                        | Frame Material        | Rolled Steel    |
| Shaft Type            | T                           | Overall Length        | 12.69 in        |
| Frame Length          | 8.50 in                     | Shaft Diameter        | 1.125 in        |
| Shaft Extension       | 2.75 in                     | Assembly/Box Mounting | F1 Only         |
| Connection Drawing    | 005020.02ME                 | Outline Drawing       | 035676-850      |




|   |          |           |                                |
|---|----------|-----------|--------------------------------|
|   |          |           | TOLERANCES<br>UNLESS SPECIFIED |
|   |          |           | DEC. INCHES                    |
|   |          | .X        | ±.1                            |
|   |          | .XX       | ±.03                           |
|   |          | .XXX      | ±.005                          |
|   |          | .XXXX     | ±.0005                         |
| NO.   | REVISION | BY & DATE | CHK ANG ±1/2"                  |
| THIS DRAWING IN DESIGN AND DETAIL IS OUR PROPERTY AND MUST NOT BE USED EXCEPT IN CONNECTION WITH OUR WORK. ALL RIGHTS OF DESIGN AND INVENTION ARE RESERVED.<br>THIS IS AN ELECTRONICALLY GENERATED DOCUMENT – DO NOT SCALE THIS PRINT |          |           | RFP                            |
|   |          |           | DIST NLV                       |

3 of 4

VIEW FROM OUTSIDE OF MOTOR AT SWITCH END.



|  |          |           |      |                                |                     |   |   |      |             |      |    |      |
|--|----------|-----------|------|--------------------------------|---------------------|---|---|------|-------------|------|----|------|
|  |          |           |      | TOLERANCES<br>UNLESS SPECIFIED |                     |  | DRAWN LST 7/2/08  |      |             |      |    |      |
|  |          |           |      | DEC.                           | INCHES              |   | CHK   |      |             |      |    |      |
|  |          |           |      | .X                             | ±.1                 |   | APPD  |      |             |      |    |      |
|  |          |           |      | .XX                            | ±.01                |   | TITLE<br>EXTERNAL WIRING DIAGRAM<br>TYPE T W/ PROTECTOR |      | SCALE       | 1=1  |    |      |
|  |          |           |      | .XXX                           | ±.005               |   |   |      | REF         |      |    |      |
|  |          |           |      | .XXXX                          | ±.0005              |   | MAT'L.<br>DECAL - 004023                                |      | FMF         |      |    |      |
| NO.  | REVISION | BY & DATE | CHK  | ANG                            | ±1/2"               | FINISH  |   | PREV |             |      |    |      |
| THIS DRAWING IN DESIGN AND DETAIL IS OUR PROPERTY AND MUST NOT BE USED EXCEPT<br>IN CONNECTION WITH OUR WORK ALL RIGHTS OF DESIGN AND INVENTION ARE RESERVED<br>THIS IS AN ELECTRONICALLY GENERATED DOCUMENT - DO NOT SCALE THIS PRINT |          |           | RFP  |                                | CAD FILE 00502002ME |   |   | SIZE | DRAWING NO. | PAGE | OF | REV. |
|  |          |           | DIST |                                |                     |   |   | A    | 005020-02ME |      |    |      |