

# PRODUCT INFORMATION PACKET

**marathon®**  
Motors

Model No: 182TTDW4127

Catalog No: U1409

General Purpose Motor, 3 & 2 HP, 3 Ph, 60 & 50 Hz, 230/460 & 190/380 V, 1800 & 1500 RPM,  
182T Frame, DP



Regal and Marathon are trademarks of Regal Rexnord Corporation or one of its affiliated companies.

©2023 Regal Rexnord Corporation, All Rights Reserved. MC017097E

**RegalRexnord**

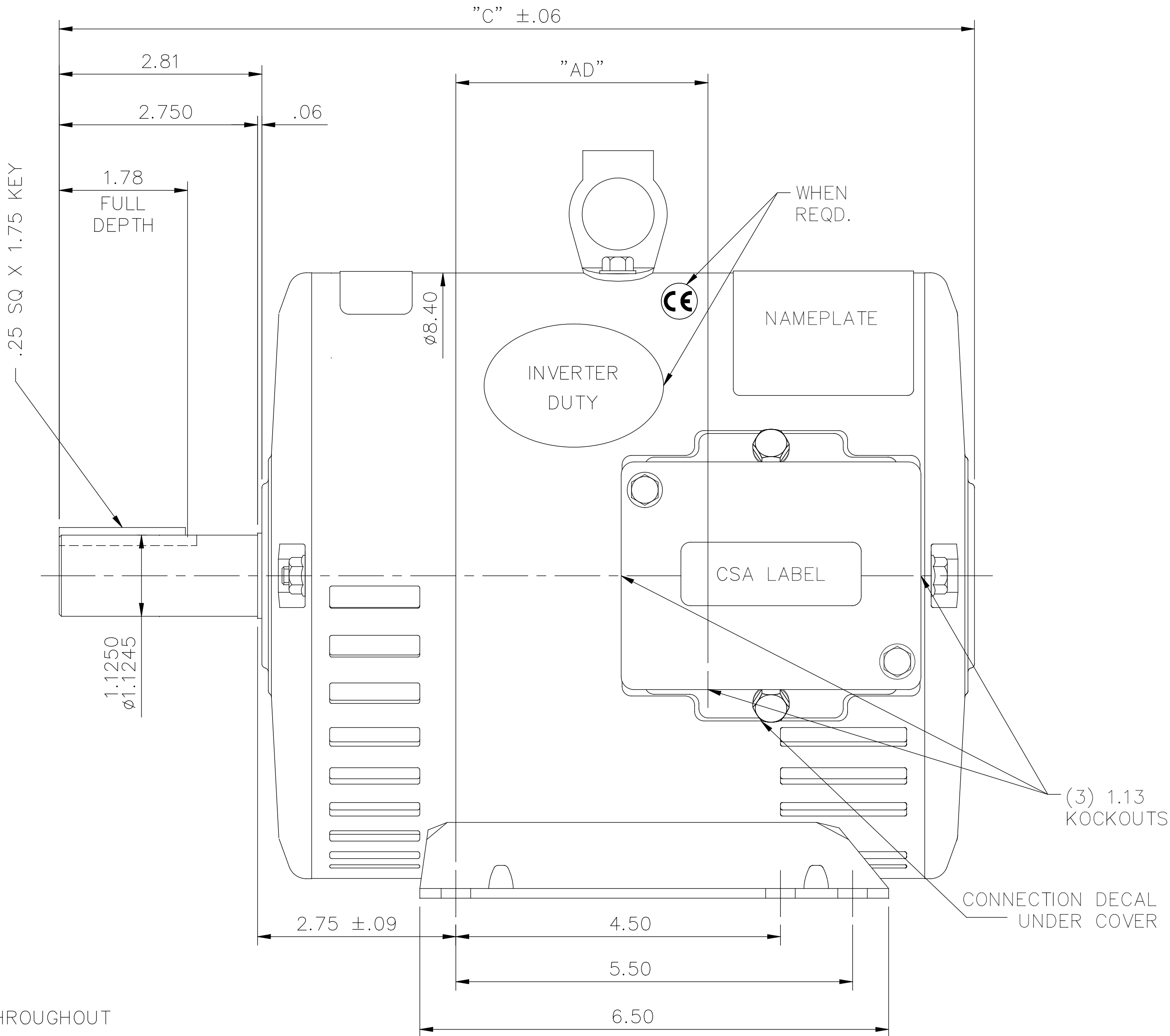
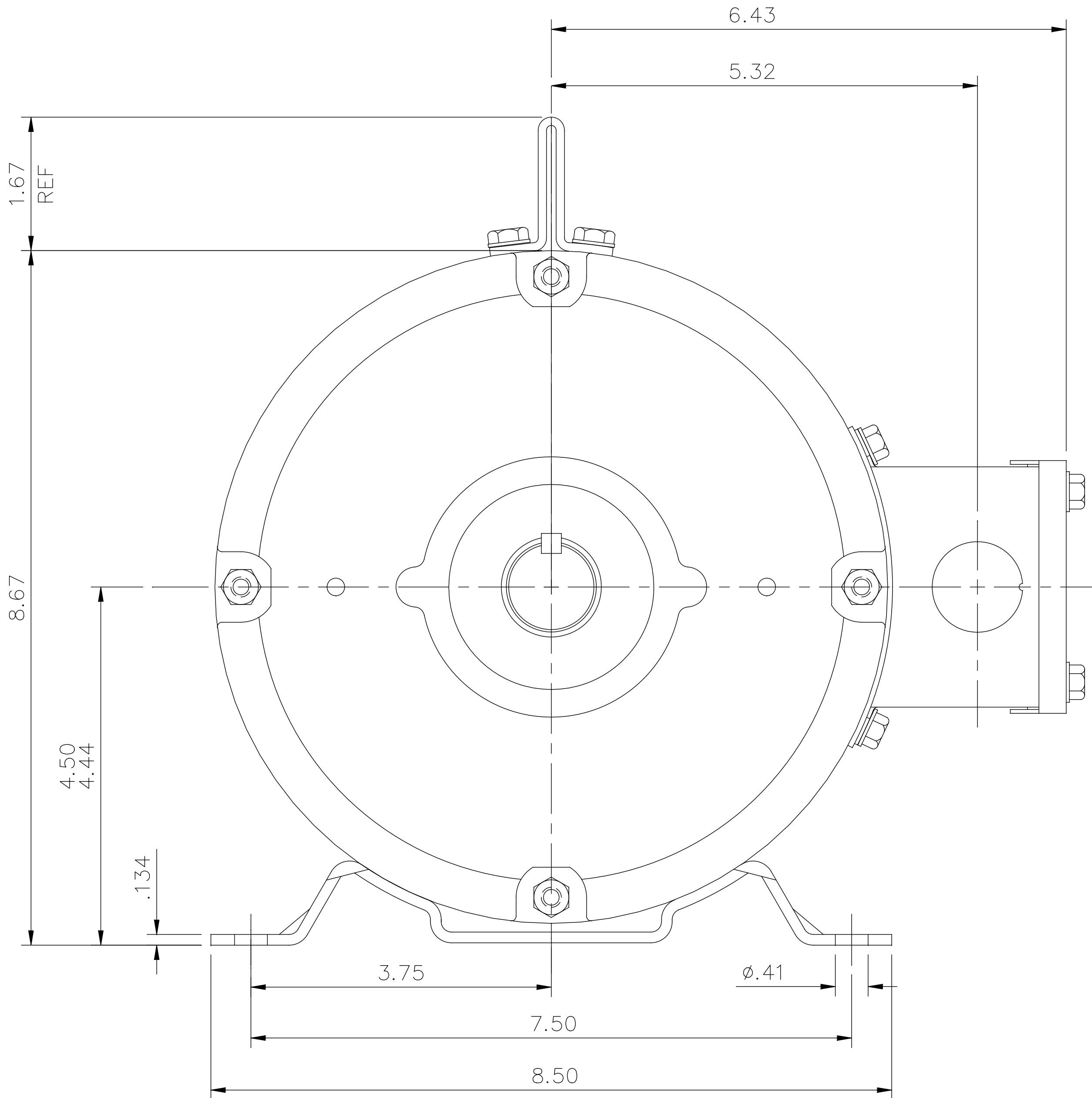
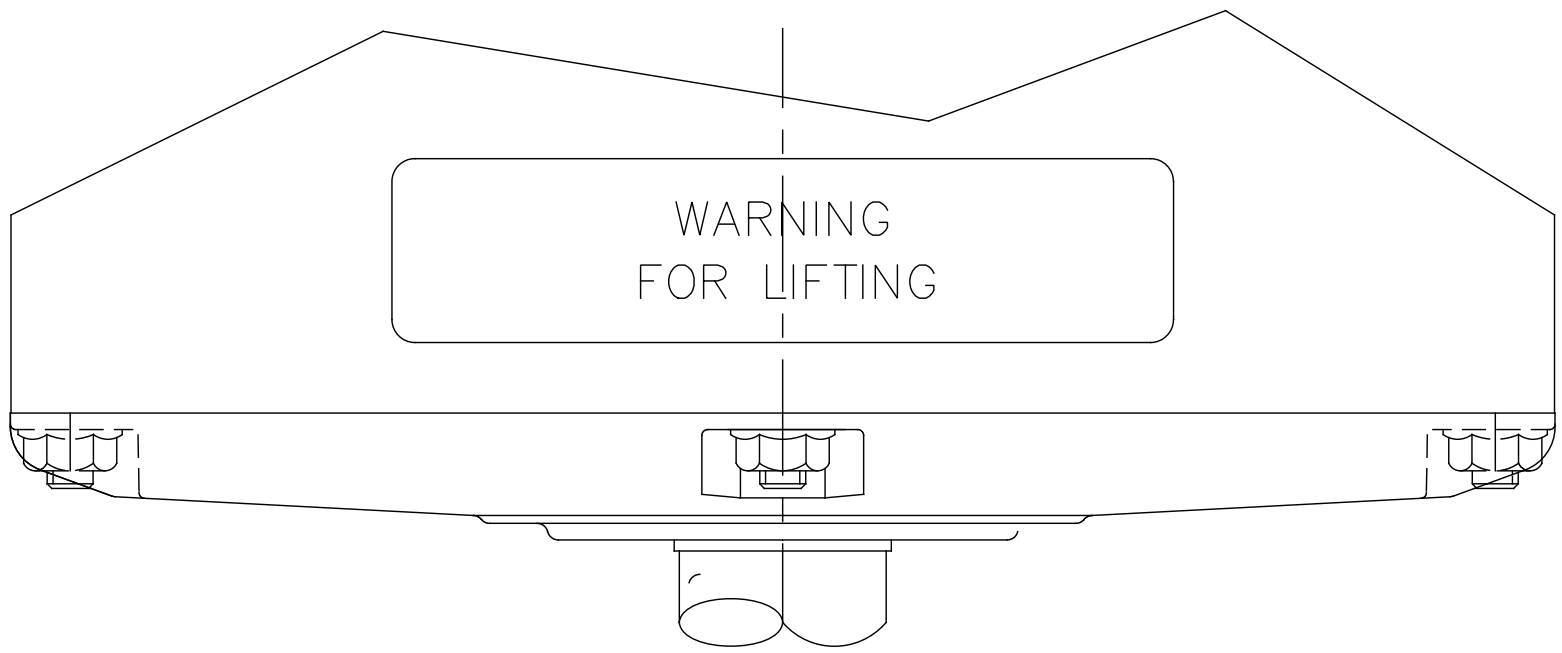
### Nameplate Specifications

Phase	3	Output HP	3 & 2 Hp
Output KW	2.2 & 1.5 kW	Voltage	230/460 & 190/380 V
Speed	1765 & 1480 rpm	Service Factor	1.15 & 1.15
Frame	182T	Enclosure	Drip Proof
Thermal Protection	No Protection	Efficiency	86.5 & 87 %
Ambient Temperature	40 °C	Frequency	60 & 50 Hz
Current	8.8/4.4 & 7.8/3.9 A	Power Factor	73.8
Duty	Continuous	Insulation Class	F
Design Code	B	KVA Code	K
Drive End Bearing Size	6206	Opp Drive End Bearing Size	6205
UL	Recognized	CSA	Y
CE	Y	IP Code	22
Number of Speeds	1		

### Technical Specifications


Electrical Type	Squirrel Cage Induction Run	Starting Method	Across The Line
Poles	4	Rotation	Reversible
Resistance Main	4.85 Ohms	Mounting	Rigid Base
Motor Orientation	Horizontal	Drive End Bearing	Ball
Opp Drive End Bearing	Ball	Frame Material	Rolled Steel
Shaft Type	T	Overall Length	12.69 in
Frame Length	8.50 in	Shaft Diameter	1.125 in
Shaft Extension	2.75 in	Assembly/Box Mounting	F2 ONLY
Outline Drawing	035549-850	Connection Drawing	005010.01ME

035549

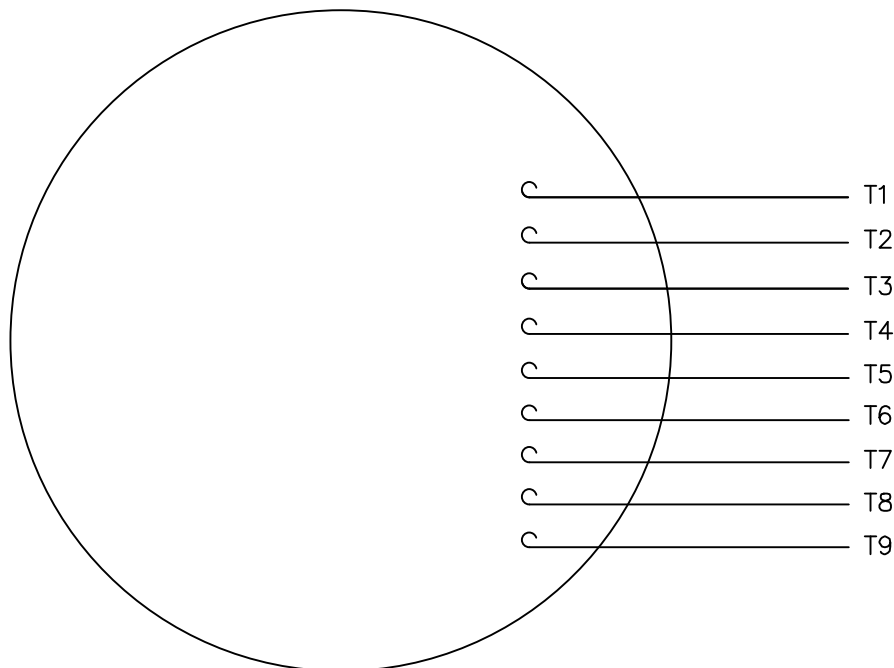


GASKETS THROUGHOUT

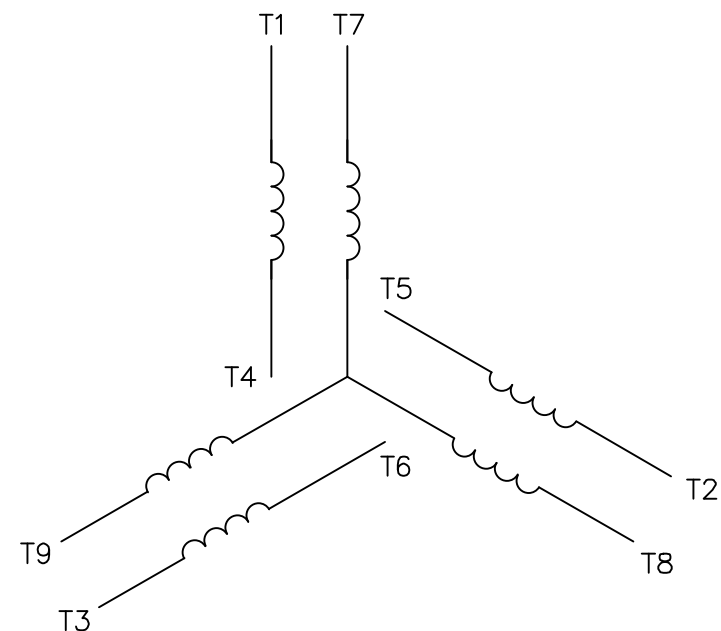
DASH NO.	"C"	"AD"
850	12.69	3.50
900	13.19	4.00
950	13.69	4.50
1000	14.19	5.00
1050	14.69	5.50
1100	15.19	6.00
1150	15.69	6.50

				TOLERANCES UNLESS SPECIFIED		 <b>Regal Beloit America, Inc.</b>			DRAWN VV 08/14/07		
				DEC.	INCHES				CHK YS 08/14/07		
				.X	±.1				APPD		
				.XX	±.03	TITLE OUTLINE – 180T FRAME DRIP PROOF – RIGID			SCALE 1=2		
02	DRAWING UPDATED WITH REGAL LOGO.		SYED 11/06/15	.XXX	±.005				REF 035466		
01	ADDED WHEN REQ'D NOTE INVERTER DECAL		VS 3/22/13		.XXXX ±.0005	MAT'L.			FMF		
NO.	REVISION		BY & DATE	CHK	ANG	±1/2"	FINISH			PREV	
THIS DRAWING IN DESIGN AND DETAIL IS OUR PROPERTY AND MUST NOT BE USED EXCEPT IN CONNECTION WITH OUR WORK ALL RIGHTS OF DESIGN AND INVENTION ARE RESERVED THIS IS AN ELECTRONICALLY GENERATED DOCUMENT – DO NOT SCALE THIS PRINT				RFP		CAD FILE 035549		SIZE	DRAWING NO.		REV.
				DIST NLV				B	035549		


VIEW FROM OUTSIDE OF MOTOR AT SWITCH END.



## LINE LEADS



VOLTAGE	L1	L2	L3	JOIN & INSULATE
HIGH	T1	T2	T3	(T4,T7) (T5,T8) (T6,T9)
LOW	T1,T7	T2,T8	T3,T9	T4,T5,T6

				TOLERANCES UNLESS SPECIFIED			DRAWN RDW 04/12/02		
				DEC.	INCHES		CHK		
				.X	±.1		APPD		
				.XX	±.01		SCALE 1=1		
				.XXX	±.005		REF FIG.2-51		
				.XXXX	±.0005		FMF		
NO.	REVISION	BY & DATE	CHK	ANG	±1/2"	FINISH		PREV	
THIS DRAWING IN DESIGN AND DETAIL IS OUR PROPERTY AND MUST NOT BE USED EXCEPT IN CONNECTION WITH OUR WORK ALL RIGHTS OF DESIGN AND INVENTION ARE RESERVED THIS IS AN ELECTRONICALLY GENERATED DOCUMENT – DO NOT SCALE THIS PRINT			RFP	04/12/02	CAD FILE 00501001ME		SIZE	DRAWING NO.	REV.
			DIST				A	005010-01ME	