

PRODUCT INFORMATION PACKET



Model No: 182TTDW4036

Catalog No: E147A

3 HP Close-Coupled Pump Motor, 3 phase, 1800 RPM, 200 V, 182JMV Frame, ODP
Close-Coupled Pump Motors

Regal and Marathon are trademarks of Regal Rexnord Corporation or one of its affiliated companies.
©2021 Regal Rexnord Corporation, All Rights Reserved. MC017097E



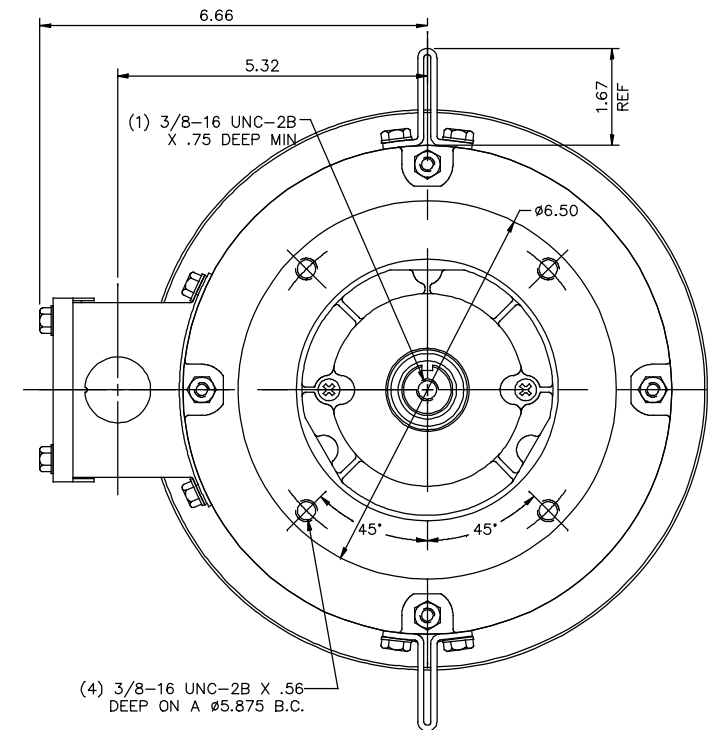
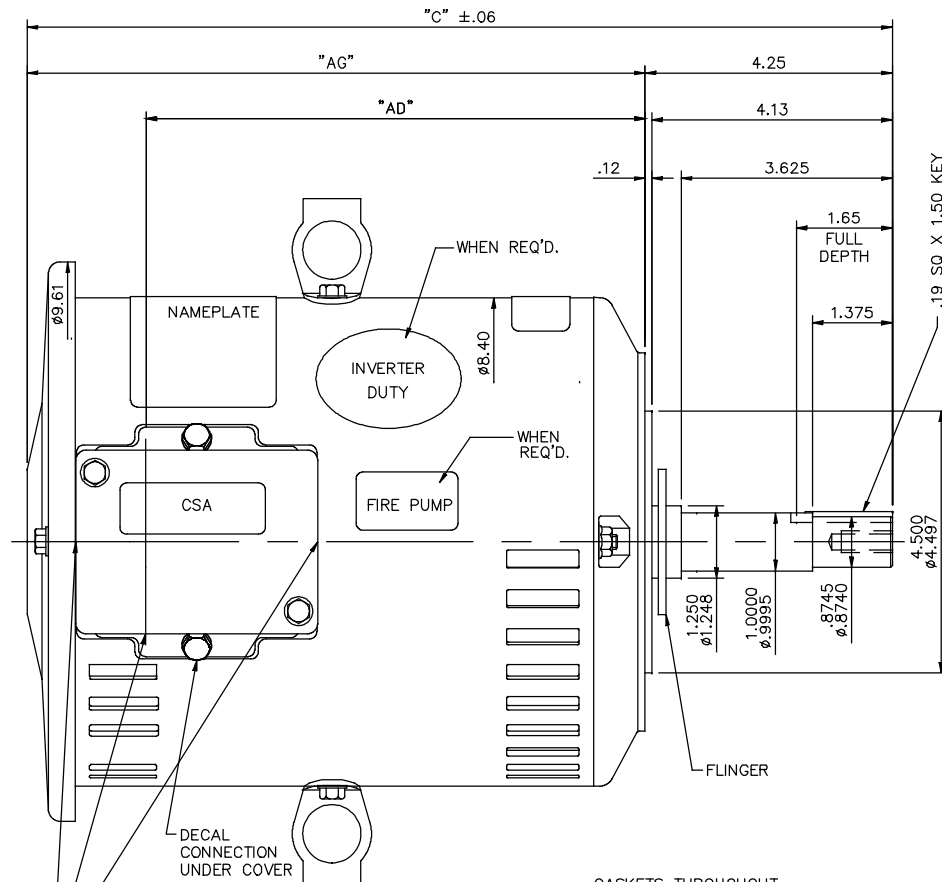
Nameplate Specifications

Output HP	3 Hp	Output KW	2.2 kW
Frequency	60 Hz	Voltage	200 V
Current	10.1 A	Speed	1765 rpm
Service Factor	1.15	Phase	3
Efficiency	86.5 %	Power Factor	73.8
Duty	Continuous	Insulation Class	F
Design Code	B	KVA Code	K
Frame	182JMV	Enclosure	Drip Proof
Thermal Protection	No	Ambient Temperature	40 °C
Drive End Bearing Size	6207	Opp Drive End Bearing Size	6205
UL	Recognized	CSA	Y
CE	Y	IP Code	22
Number of Speeds	1		

Technical Specifications

Electrical Type	Squirrel Cage Induction Run	Starting Method	Across The Line
Poles	4	Rotation	Reversible
Resistance Main	4.85 Ohms	Mounting	Round
Motor Orientation	Shaft Down	Drive End Bearing	Ball
Opp Drive End Bearing	Ball	Frame Material	Rolled Steel
Shaft Type	JM	Overall Length	14.45 in
Frame Length	8.50 in	Shaft Diameter	0.875 in
Shaft Extension	4.28 in	Assembly/Box Mounting	F1/F2 Capable
Connection Drawing	005102.01ME	Outline Drawing	035547-850

035547



Ø1.13 KNOCKOUTS
(3) REQUIRED

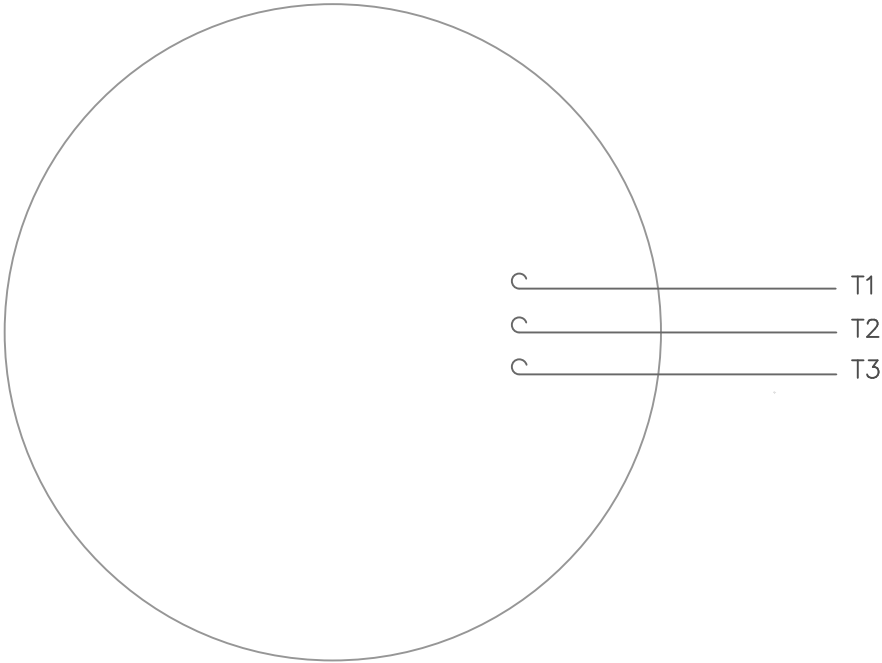
MAXIMUM FACE RUNOUT TO BE .004 T.I.R.
MAXIMUM PILOT ECCENTRICITY TO BE .004 T.I.R.

DASH NO.	"C"	"AG"	"AD"
850	14.45	10.20	8.13
900	14.95	10.70	8.63
950	15.45	11.20	9.13
1000	15.95	11.70	9.63
1050	16.45	12.20	10.13
1100	16.95	12.70	10.63
1150	17.45	13.20	11.13

NO.	REVISION	BY & DATE	CHK	ANG	±1/2"	FINISH
05	UPDATED PER ECR-0141965	MVG 10/09/17	SR	DEC.	INCHES	
04	UPDATED REGAL LOGO	SS 05/17/16		X	±.1	
03	"C", "AG" & "AD" DIM. UPDATED ON DASH #TABLE	PVR 11/21/12	JD	XX	±.03	
02	KEY WAS .19 SQ X 1.75	JD 7/15/2011		XXX	±.005	
01	ADD UL DECAL PER ISAAC 11-1098	LST 3/9/11		XXXX	±.0005	
THIS DRAWING IN DESIGN AND DETAIL IS OUR PROPERTY AND MUST NOT BE USED EXCEPT IN CONNECTION WITH OUR WORK. ALL RIGHTS OF DESIGN AND INVENTION ARE RESERVED. THIS IS AN ELECTRONICALLY GENERATED DOCUMENT - DO NOT SCALE THIS PRINT						
			RFP			
			DIST			


TOLERANCES UNLESS SPECIFIED	REGAL™ Regal Beloit America, Inc.	DRAWN VV 18/08/07
		CHK
		APPD YS 18/08/07
		SCALE 1=2
		REF 035486
		FMF 184TIDW4135
		PREV
		REV.
		05

VIEW FROM OUTSIDE OF MOTOR AT SWITCH END.



CONNECT LEADS AS FOLLOWS
FOR FOUR CONDUCTOR CORD ()

CORD	L1 (RED)	L2 (WHITE)	L3 (BLACK)	(GREEN)
MOTOR	T1	T2	T3	GROUND

				TOLERANCES UNLESS SPECIFIED			DRAWN RDW 5/1/02		
				DEC.	INCHES		CHK		
				.X	±.1		APPD		
				.XX	±.01		SCALE 1=1		
				.XXX	±.005		REF		
				.XXXX	±.0005	MAT'L. DECAL - 004169		FMF	
NO.	REVISION	BY & DATE	CHK	ANG	±1/2°	FINISH		PREV	
THIS DRAWING IN DESIGN AND DETAIL IS OUR PROPERTY AND MUST NOT BE USED EXCEPT IN CONNECTION WITH OUR WORK ALL RIGHTS OF DESIGN AND INVENTION ARE RESERVED THIS IS AN ELECTRONICALLY GENERATED DOCUMENT – DO NOT SCALE THIS PRINT			RFP 5/1/02		CAD FILE 00510201ME		SIZE A	DRAWING NO. 005102-01ME	REV.
			DIST						

THIS DRAWING IN DESIGN AND DETAIL IS OUR PROPERTY AND MUST NOT BE USED EXCEPT
IN CONNECTION WITH OUR WORK ALL RIGHTS OF DESIGN AND INVENTION ARE RESERVED
THIS IS AN ELECTRONICALLY GENERATED DOCUMENT - DO NOT SCALE THIS PRINT