

# PRODUCT INFORMATION PACKET



Model No: 182TTDW4030

Catalog No: E1915

3 HP General Purpose Motor, 3 phase, 1800 RPM, 575 V, 182T Frame, ODP  
General Purpose Motors

Regal and Marathon are trademarks of Regal Rexnord Corporation or one of its affiliated companies.  
©2021 Regal Rexnord Corporation, All Rights Reserved. MC017097E



**Nameplate Specifications**

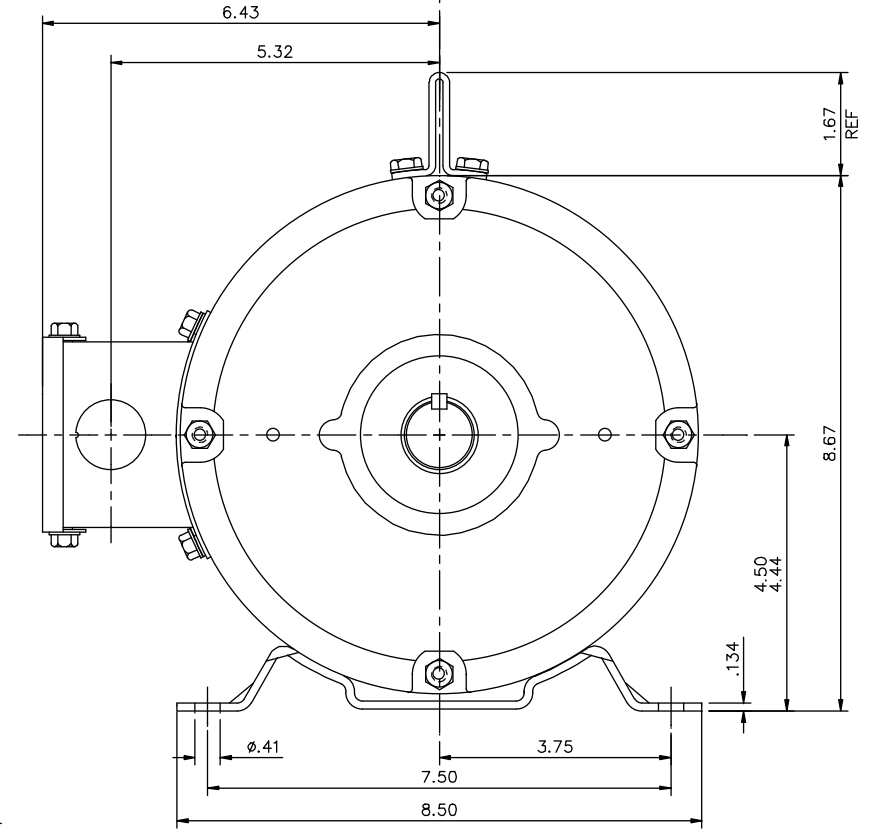
Output HP	3 Hp	Output KW	2.2 kW
Frequency	60 Hz	Voltage	575 V
Current	3.5 A	Speed	1765 rpm
Service Factor	1.15	Phase	3
Efficiency	86.5 %	Power Factor	73.8
Duty	Continuous	Insulation Class	F
Design Code	B	KVA Code	K
Frame	182T	Enclosure	Drip Proof
Thermal Protection	No	Ambient Temperature	40 °C
Drive End Bearing Size	6206	Opp Drive End Bearing Size	6205
UL	Recognized	CSA	Y
CE	Y	IP Code	22
Number of Speeds	1		

**Technical Specifications**


Electrical Type	Squirrel Cage Induction Run	Starting Method	Across The Line
Poles	4	Rotation	Reversible
Resistance Main	4.85 Ohms	Mounting	Rigid Base
Motor Orientation	Horizontal	Drive End Bearing	Ball
Opp Drive End Bearing	Ball	Frame Material	Rolled Steel
Shaft Type	T	Overall Length	12.69 in
Frame Length	8.50 in	Shaft Diameter	1.125 in
Shaft Extension	2.75 in	Assembly/Box Mounting	F1 ONLY
Connection Drawing	005102.01ME	Outline Drawing	035534-850

This is an uncontrolled document once printed or downloaded and is subject to change without notice. Date Created:10/12/2021

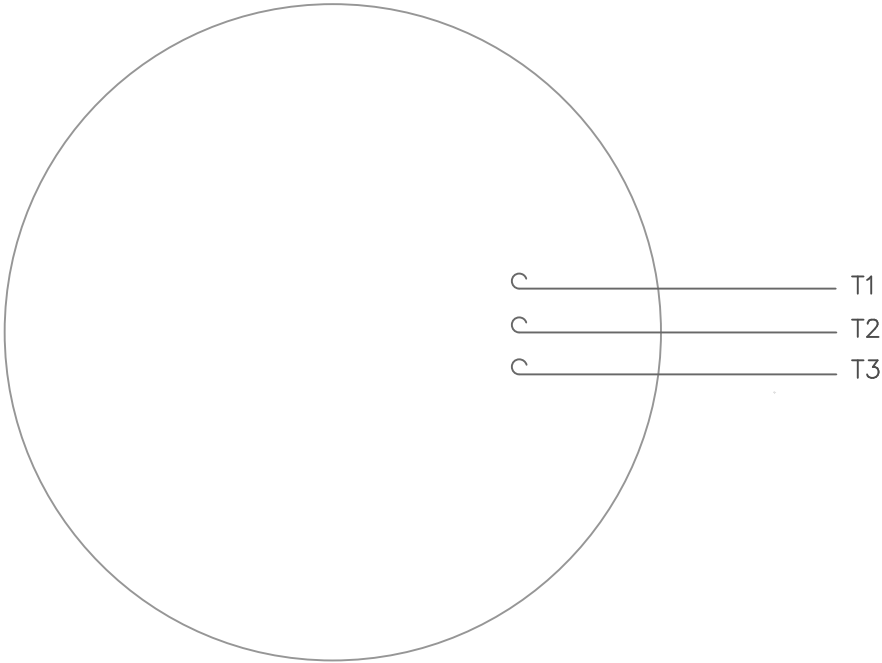
A technical line drawing of the front view of a machine. A central vertical dashed line indicates the axis of symmetry. In the upper center, there are two circular components, possibly eyes or sensors. Below them, a rectangular box contains the text "WARNING FOR LIFTING". At the bottom center, there is a horizontal bar with a central rectangular cutout. On the far left and right sides, there are complex mechanical structures, likely wheels or guides, each with multiple contact points.



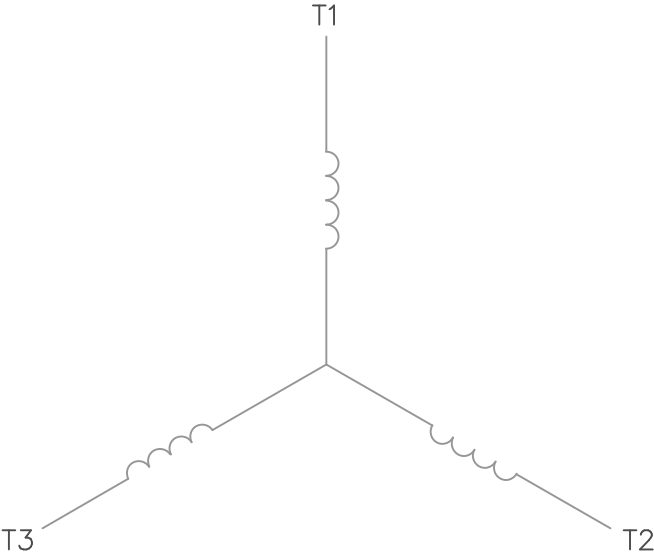
DASH NO.	"C"	"AD"
850	12.69	5.25
900	13.19	5.75
950	13.69	6.25
1000	14.19	6.75
1050	14.69	7.25
1100	15.19	7.75
1150	15.69	8.25
1200	16.19	8.75

				TOLERANCES UNLESS SPECIFIED		DRAWN VV 06/22/07
			DEC.	INCHES		CHK
			X	±.1		
			XX	±.03	TITLE OUTLINE – 180T FRAME DRIP PROOF – RIGID	SCALE 1=2
02	ADD "INVERTER DUTY" DECAL PER ISAAC 09-5523	LST 1/25/10	XXX	±.005		REF
01	REMOVED SERIES-E DECAL	VV 08/08/07	XXXX	±.0005	MAT'L	FMF
NO.	REVISION	BY & DATE	CHK ANG	±1/2"	FINISH	PREV
THIS DRAWING IN DESIGN AND DETAIL IS OUR PROPERTY AND MUST NOT BE USED EXCEPT IN CONNECTION WITH OUR WORK. ALL RIGHTS OF DESIGN AND INVENTION ARE RESERVED. THIS IS AN ELECTRONICALLY GENERATED DOCUMENT - DO NOT SCALE THIS PRINT					CAD FILE 035534	REV. 02
					SIZE B	DRAWING NO. 035534

VIEW FROM OUTSIDE OF MOTOR AT SWITCH END.




LINE LEADS



CONNECT LEADS AS FOLLOWS  
FOR FOUR CONDUCTOR CORD ( )

CORD	L1 (RED)	L2 (WHITE)	L3 (BLACK)	(GREEN)
MOTOR	T1	T2	T3	GROUND

				TOLERANCES UNLESS SPECIFIED			DRAWN RDW 5/1/02					
				DEC.	INCHES		CHK					
				.X	±.1		APPD					
				.XX	±.01		SCALE 1=1					
				.XXX	±.005		REF					
				.XXXX	±.0005	MAT'L. DECAL - 004169			FMF			
NO.	REVISION		BY & DATE		CHK	ANG	±1/2°	FINISH			PREV	
THIS DRAWING IN DESIGN AND DETAIL IS OUR PROPERTY AND MUST NOT BE USED EXCEPT IN CONNECTION WITH OUR WORK ALL RIGHTS OF DESIGN AND INVENTION ARE RESERVED THIS IS AN ELECTRONICALLY GENERATED DOCUMENT – DO NOT SCALE THIS PRINT					RFP 5/1/02		CAD FILE 00510201ME		SIZE	DRAWING NO.		REV.
					DIST				A	005102-01ME		

THIS DRAWING IN DESIGN AND DETAIL IS OUR PROPERTY AND MUST NOT BE USED EXCEPT  
IN CONNECTION WITH OUR WORK ALL RIGHTS OF DESIGN AND INVENTION ARE RESERVED  
THIS IS AN ELECTRONICALLY GENERATED DOCUMENT - DO NOT SCALE THIS PRINT