

PRODUCT INFORMATION PACKET



Model No: 182TTDW4027

Catalog No: E1904

3 HP General Purpose Motor, 3 phase, 1800 RPM, 200 V, 182T Frame, ODP
General Purpose Motors

Regal and Marathon are trademarks of Regal Rexnord Corporation or one of its affiliated companies.
©2021 Regal Rexnord Corporation, All Rights Reserved. MC017097E



Nameplate Specifications

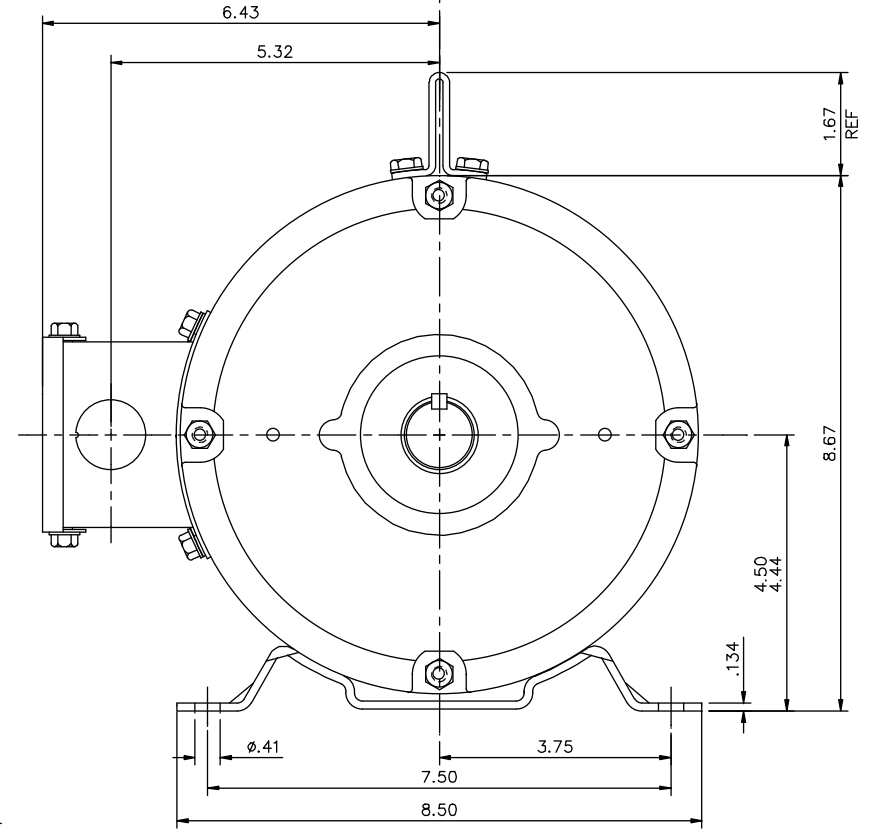
Output HP	3 Hp	Output KW	2.2 kW
Frequency	60 Hz	Voltage	200 V
Current	10.1 A	Speed	1765 rpm
Service Factor	1.15	Phase	3
Efficiency	86.5 %	Power Factor	73.8
Duty	Continuous	Insulation Class	F
Design Code	B	KVA Code	K
Frame	182T	Enclosure	Drip Proof
Thermal Protection	No	Ambient Temperature	40 °C
Drive End Bearing Size	6206	Opp Drive End Bearing Size	6205
UL	Recognized	CSA	Y
CE	Y	IP Code	22
Number of Speeds	1		

Technical Specifications


Electrical Type	Squirrel Cage Induction Run	Starting Method	Across The Line
Poles	4	Rotation	Reversible
Resistance Main	4.85 Ohms	Mounting	Rigid Base
Motor Orientation	Horizontal	Drive End Bearing	Ball
Opp Drive End Bearing	Ball	Frame Material	Rolled Steel
Shaft Type	T	Overall Length	12.69 in
Frame Length	8.50 in	Shaft Diameter	1.250 in
Shaft Extension	2.75 in	Assembly/Box Mounting	F1 ONLY
Connection Drawing	005102.01ME	Outline Drawing	035534-850

This is an uncontrolled document once printed or downloaded and is subject to change without notice. Date Created:10/12/2021

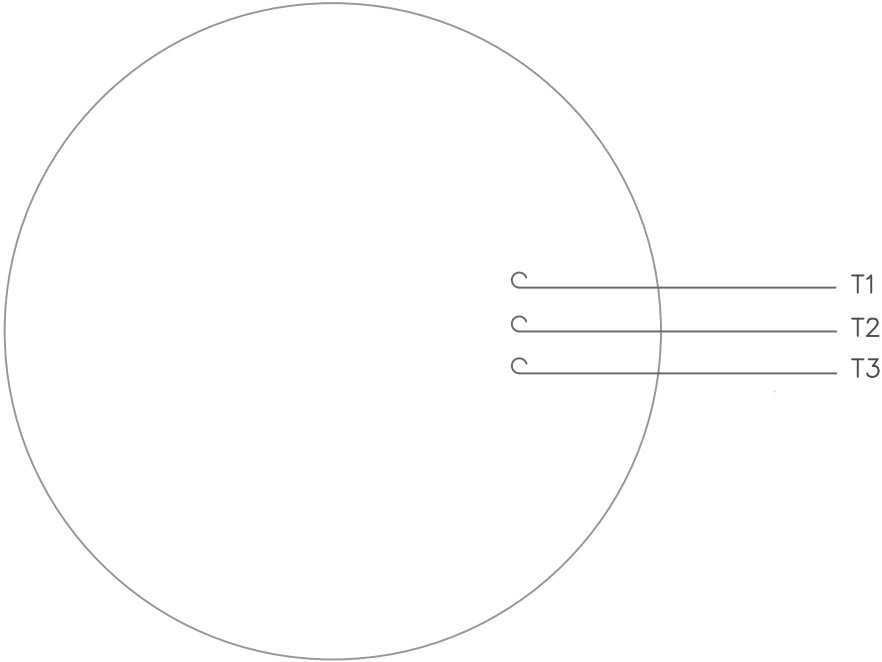
A technical line drawing showing the front view of the machine. A central vertical line indicates the axis of symmetry. At the top, there are two circular components, likely eyes or rollers. Below them is a rectangular box containing the text "WARNING FOR LIFTING". At the bottom, there are two circular components, similar to the ones at the top, and a central rectangular base. The overall shape is symmetrical and elongated horizontally.



DASH NO.	"C"	"AD"
850	12.69	5.25
900	13.19	5.75
950	13.69	6.25
1000	14.19	6.75
1050	14.69	7.25
1100	15.19	7.75
1150	15.69	8.25
1200	16.19	8.75


					TOLERANCES UNLESS SPECIFIED		DRAWN VV 06/22/07			
				DEC.	INCHES		CHK			
				X	±.1					
				XX	±.03	TITLE	OUTLINE – 180T FRAME DRIP PROOF – RIGID			
02	ADD "INVERTER DUTY" DECAL PER ISAAC 09–5523		LST 1/25/10	XXX	±.005		SCALE 1=2			
01	REMOVED SERIES–E DECAL		VV 08/08/07	XXXX	±.0005	MAT'L	REF			
							FMF			
NO.	REVISION		BY & DATE	CHK	ANG ±1/2"	FINISH	PREV			
THIS DRAWING IN DESIGN AND DETAIL IS OUR PROPERTY AND MUST NOT BE USED EXCEPT IN CONNECTION WITH OUR WORK. ALL RIGHTS OF DESIGN AND INVENTION ARE RESERVED. THIS IS AN ELECTRONICALLY GENERATED DOCUMENT – DO NOT SCALE THIS PRINT						CAD FILE	035534	SIZE B	DRAWING NO. 035534	REV. 02

VIEW FROM OUTSIDE OF MOTOR AT SWITCH END.



CONNECT LEADS AS FOLLOWS
FOR FOUR CONDUCTOR CORD ()

CORD	L1 (RED)	L2 (WHITE)	L3 (BLACK)	(GREEN)
MOTOR	T1	T2	T3	GROUND

				TOLERANCES UNLESS SPECIFIED			DRAWN RDW 5/1/02		
				DEC.	INCHES		CHK		
				.X	±.1		APPD		
				.XX	±.01		TITLE EXTERNAL WIRING DIAGRAM TYPE "T" W/O PROTECTOR	SCALE 1=1	
				.XXX	±.005			REF	
				.XXXX	±.0005	MAT'L. DECAL - 004169	FMF		
NO.	REVISION	BY & DATE	CHK	ANG	±1/2°	FINISH	PREV		
THIS DRAWING IN DESIGN AND DETAIL IS OUR PROPERTY AND MUST NOT BE USED EXCEPT IN CONNECTION WITH OUR WORK ALL RIGHTS OF DESIGN AND INVENTION ARE RESERVED THIS IS AN ELECTRONICALLY GENERATED DOCUMENT - DO NOT SCALE THIS PRINT			RFP	5/1/02	CAD FILE 00510201ME		SIZE	DRAWING NO.	REV.
			DIST					A	005102-01ME