

PRODUCT INFORMATION PACKET

marathon®
Motors

Model No: 182TTDW16316

Catalog No: E933A

5 HP General Purpose Motor, 3 phase, 3600 RPM, 200 V, 182T Frame, ODP
General Purpose Motors



Regal and Marathon are trademarks of Regal Rexnord Corporation or one of its affiliated companies.
©2021 Regal Rexnord Corporation, All Rights Reserved. MC017097E

RegalRexnord

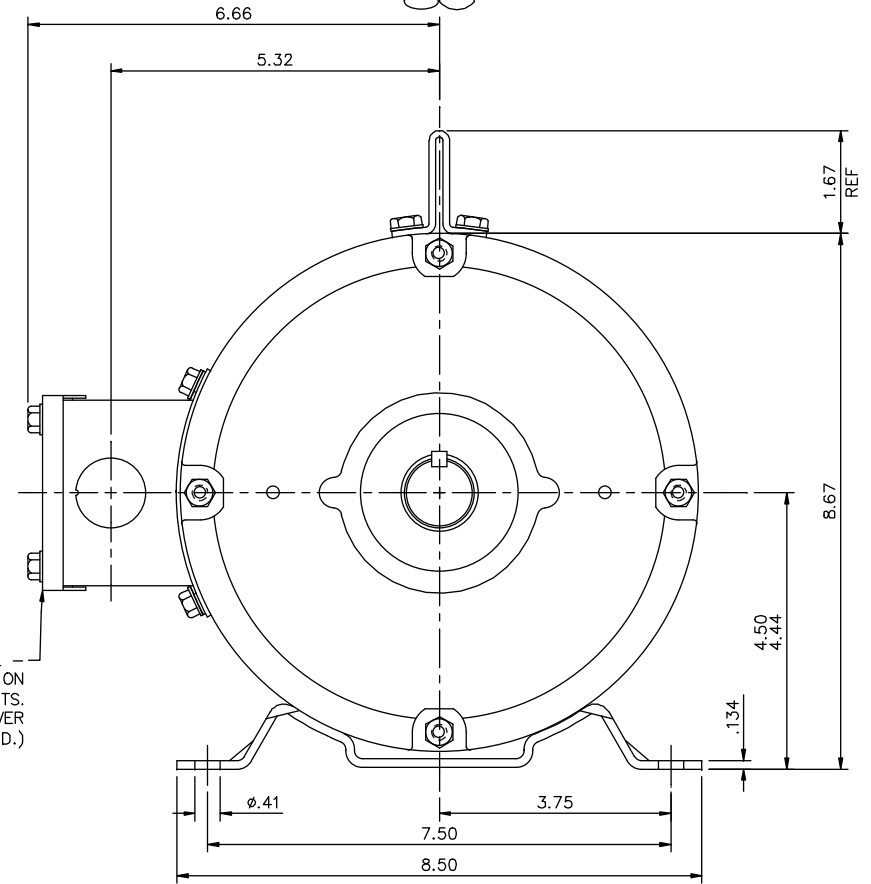
Nameplate Specifications


Output HP	5 Hp	Output KW	3.7 kW
Frequency	60 Hz	Voltage	200 V
Current	14.3 A	Speed	3500 rpm
Service Factor	1.15	Phase	3
Efficiency	86.5 %	Power Factor	86
Duty	Continuous	Insulation Class	F
Design Code	B	KVA Code	J
Frame	182T	Enclosure	Drip Proof
Thermal Protection	No	Ambient Temperature	40 °C
Drive End Bearing Size	6206	Opp Drive End Bearing Size	6205
UL	Recognized	CSA	Y
CE	Y	IP Code	12
Number of Speeds	1		

Technical Specifications

Electrical Type	Squirrel Cage Induction Run	Starting Method	Across The Line
Poles	2	Rotation	Reversible
Resistance Main	0 Ohms	Mounting	Rigid Base
Motor Orientation	Horizontal	Drive End Bearing	Ball
Opp Drive End Bearing	Ball	Frame Material	Rolled Steel
Shaft Type	T	Overall Length	13.19 in
Frame Length	9.00 in	Shaft Diameter	1.125 in
Shaft Extension	2.81 in	Assembly/Box Mounting	F1/F2 CAPABLE
Outline Drawing	035530-900	Connection Drawing	005102.01

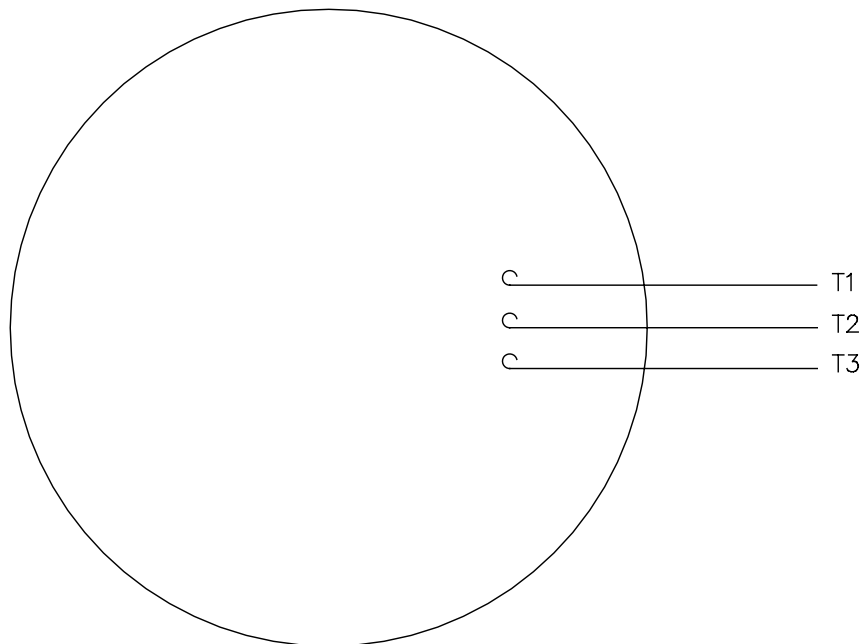
This is an uncontrolled document once printed or downloaded and is subject to change without notice. Date Created:10/12/2021



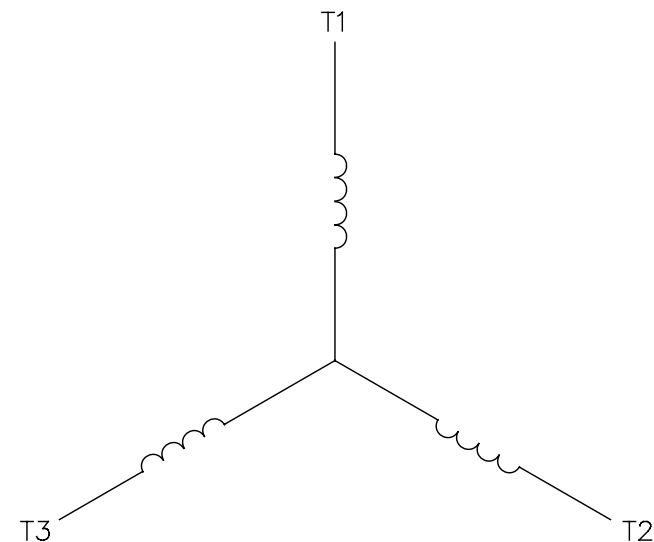
				TOLERANCES UNLESS SPECIFIED				DRAWN YS 06/21/07	
				DEC.	INCHES			CHK	
				.X	±.1			APPD	
03	REMOVED INV & XRI DECALS AS PER ISSAC 12-5294	GR 10/30/12	SR .XX	±.03	TITLE		OUTLINE – 180T FRAME		SCALE 1=2
02	ADDED STICKER LOCATIONS PER ECR 91487	JWM 12/04/07	.XXX	±.005			DRIP PROOF – RIGID		REF 035464
01	TITLE BLOCK WAS LEESON	YS 7/16/2007	.XXXX	±.0005	MAT'L				FMF
NO.	REVISION	BY & DATE	CHK	ANG	FINISH				PREV
THIS DRAWING IN DESIGN AND DETAIL IS OUR PROPERTY AND MUST NOT BE USED EXCEPT IN CONNECTION WITH OUR WORK. ALL RIGHTS OF DESIGN AND INVENTION ARE RESERVED.				RFP	CAD FILE	035530	SIZE B	DRAWING NO. 035530	REV. 03
THIS IS AN ELECTRONICALLY GENERATED DOCUMENT – DO NOT SCALE THIS PRINT				DIST NLV					

005102-01


VIEW FROM OUTSIDE OF MOTOR AT SWITCH END.



LINE LEADS

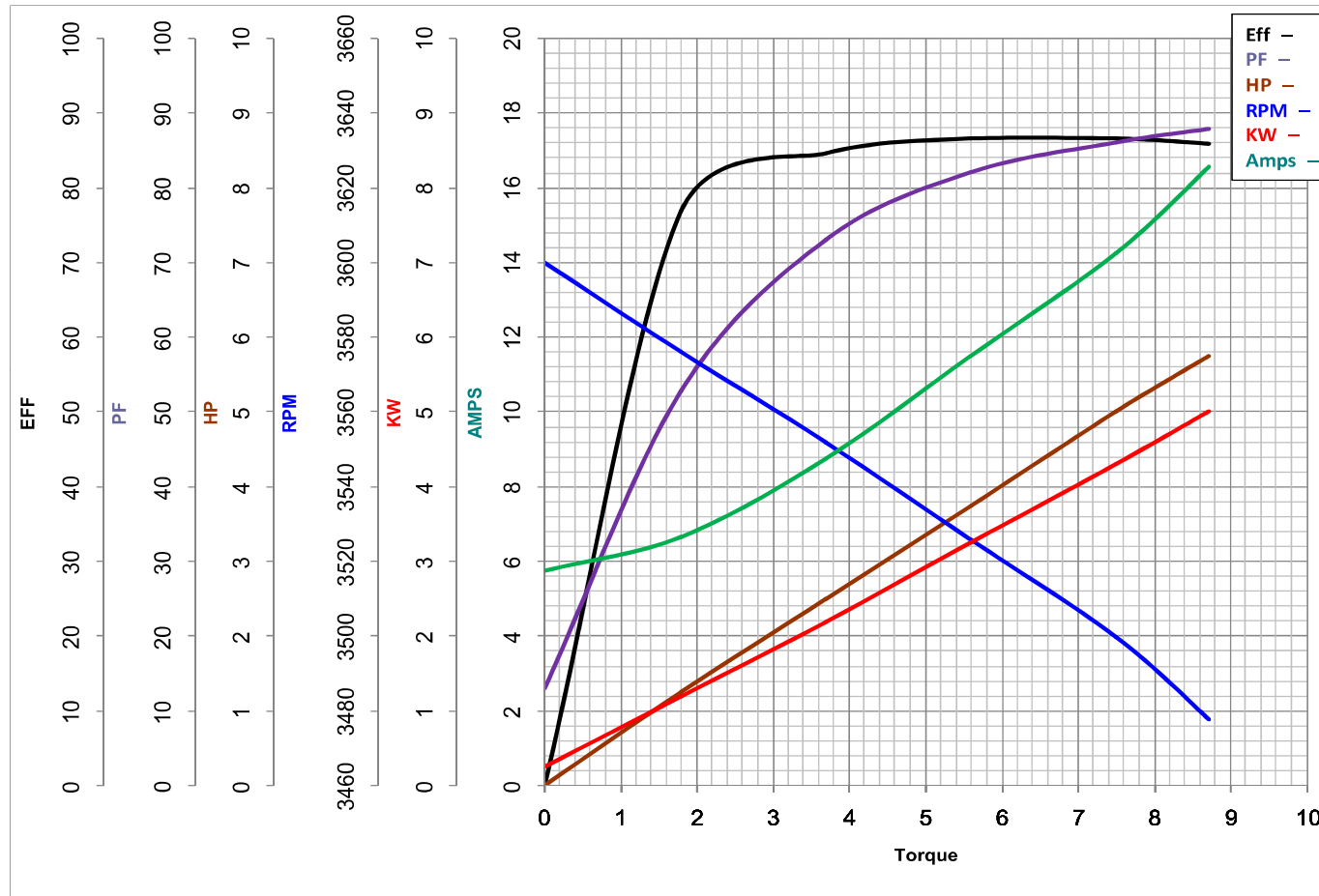
CONNECT LEADS AS FOLLOWS
FOR FOUR CONDUCTOR CORD ()

CORD	L1 (RED)	L2 (WHITE)	L3 (BLACK)	(GREEN)
MOTOR	T1	T2	T3	GROUND

				TOLERANCES UNLESS SPECIFIED		 Regal Beloit America, Inc.			DRAWN	JRW 9/11/75	
				DEC.	INCHES				CHK		
				.X	±.1				APPD	JCW 9/11/75	
08	UPDATED TO REGAL LOGO	SAJ 06/26/15	AJY	.XX	±.01	TITLE EXTERNAL WIRING DIAGRAM TYPE "T" W/O PROTECTOR			SCALE	1=1	
07	UPDATED TO CURRENT STANDARDS	DBT 5/30/97		.XXX	±.005				REF	W-T6343-6	
06	REDRAWN ON CAD; ADDED DECAL NUMBER	SAW 1/24/95		.XXXX	±.0005	MAT'L. DECAL - 004169			FMF	6T17FB7	
NO.	REVISION	BY & DATE	CHK	ANG	±1/2*	FINISH			PREV		
THIS DRAWING IN DESIGN AND DETAIL IS OUR PROPERTY AND MUST NOT BE USED EXCEPT IN CONNECTION WITH OUR WORK ALL RIGHTS OF DESIGN AND INVENTION ARE RESERVED THIS IS AN ELECTRONICALLY GENERATED DOCUMENT - DO NOT SCALE THIS PRINT				RFP	5/1/02	CAD FILE 00510201		SIZE A	DRAWING NO. 005102-01		REV. 08
				DIST BRF-NLV							

MARATHON ELECTRIC CORPORATION

TYPICAL PERFORMANCE CURVE for AC MOTOR

Customer**Curve at**200**Volts****HP** 5.00**PHASE** 3**Model No** 182TTDW1631660**HZ****VOLTS** 2005**HP****Catalog No** E933A**HZ** 60**RPM** 3500**Torque in Lb.Ft****FL TORQUE** 7.5 **Lb.Ft****BD TORQUE** 25.0 **Lb.Ft****LR TORQUE** 16.1 **Lb.Ft****FL AMPS** 14.3**PU TORQUE** 14.5 **Lb.Ft****LR AMPS** 104.65**WINDING** T82117-12**Date** 11/14/2018