

# PRODUCT INFORMATION PACKET

**marathon®**  
Motors

Model No: 182TTDW16009

Catalog No: U914

1.50 HP General Purpose Motor, 3 phase, 1200 RPM, 575 V, 182T Frame, ODP  
General Purpose Motors



Regal and Marathon are trademarks of Regal Rexnord Corporation or one of its affiliated companies.  
©2021 Regal Rexnord Corporation, All Rights Reserved. MC017097E

**RegalRexnord**

**Nameplate Specifications**

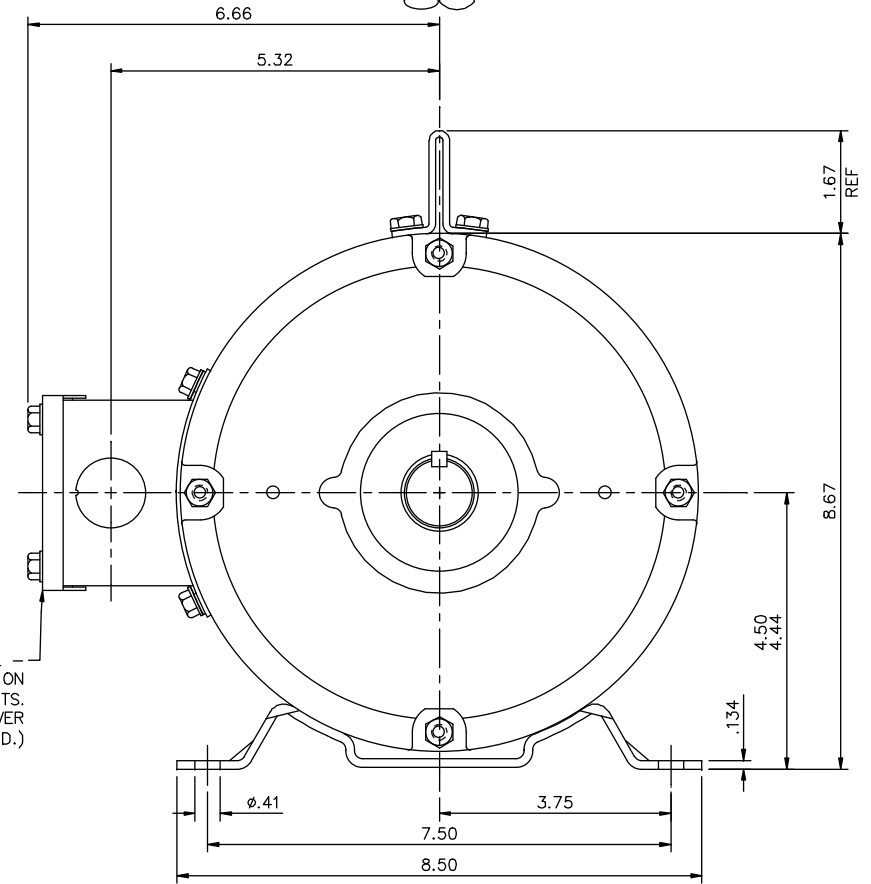
Output HP	1.50 Hp	Output KW	1.1 kW
Frequency	60 Hz	Voltage	575 V
Current	2.5 A	Speed	1170 rpm
Service Factor	1.15	Phase	3
Efficiency	86.5 %	Power Factor	60
Duty	Continuous	Insulation Class	F
Design Code	B	KVA Code	K
Frame	182T	Enclosure	Drip Proof
Thermal Protection	No	Ambient Temperature	40 °C
Drive End Bearing Size	6206	Opp Drive End Bearing Size	6205
UL	Recognized	CSA	Y
CE	Y	IP Code	22
Number of Speeds	1		


**Technical Specifications**

Electrical Type	Squirrel Cage Inverter Rated	Starting Method	Line Or Inverter
Poles	6	Rotation	Reversible
Resistance Main	0 Ohms	Mounting	Rigid Base
Motor Orientation	Horizontal	Drive End Bearing	Ball
Opp Drive End Bearing	Ball	Frame Material	Rolled Steel
Shaft Type	T	Overall Length	13.19 in
Frame Length	9.00 in	Shaft Diameter	1.125 in
Shaft Extension	2.81 in	Assembly/Box Mounting	F1 Only
Outline Drawing	035530-900	Connection Drawing	005102.01ME

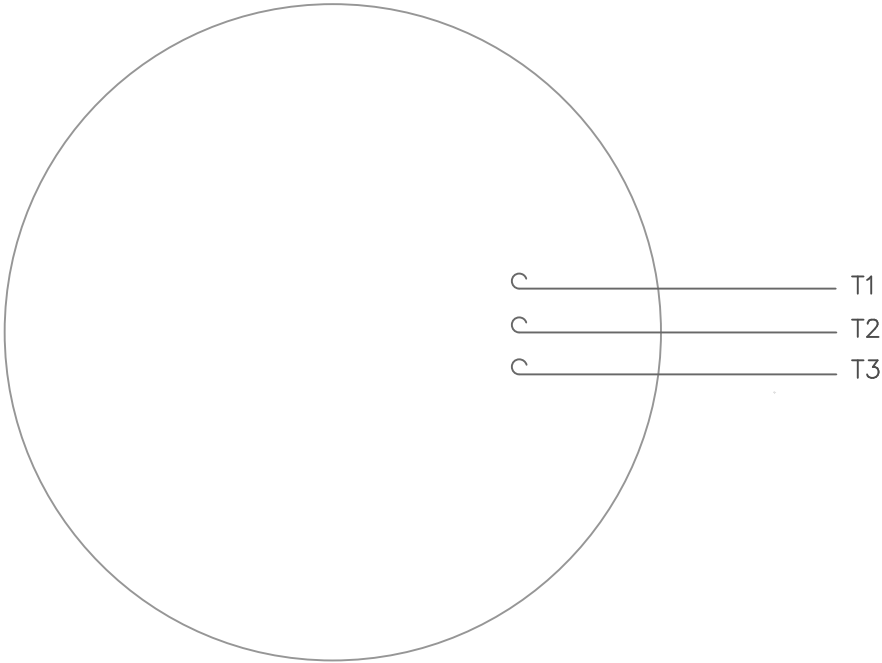
This is an uncontrolled document once printed or downloaded and is subject to change without notice. Date Created:10/12/2021

Diagram illustrating the front view of the machine. A central rectangular label reads "WARNING FOR LIFTING". Below the label is a lifting mechanism with two vertical supports and a horizontal bar. The machine has a wide, flat base with rounded corners.




				TOLERANCES UNLESS SPECIFIED				DRAWN <b>YS 06/21/07</b>	
				DEC.	INCHES			CHK	
				.X	±.1			APPD	
03	REMOVED INV & XRI DECALS AS PER ISSAC 12-5294	GR 10/30/12	SR .XX	±.03	TITLE		OUTLINE – 180T FRAME		SCALE 1=2
02	ADDED STICKER LOCATIONS PER ECR 91487	JWM 12/04/07	.XXX	±.005			DRIP PROOF – RIGID		REF 035464
01	TITLE BLOCK WAS LEESON	YS 7/16/2007	.XXXX	±.0005	MAT'L				FMF
NO.	REVISION	BY & DATE	CHK	ANG ±1/2"	FINISH				PREV
THIS DRAWING IN DESIGN AND DETAIL IS OUR PROPERTY AND MUST NOT BE USED EXCEPT IN CONNECTION WITH OUR WORK. ALL RIGHTS OF DESIGN AND INVENTION ARE RESERVED.				RFP	CAD FILE	035530	SIZE B	DRAWING NO. 035530	REV. 03
THIS IS AN ELECTRONICALLY GENERATED DOCUMENT – DO NOT SCALE THIS PRINT				DIST NLV					

VIEW FROM OUTSIDE OF MOTOR AT SWITCH END.



CONNECT LEADS AS FOLLOWS  
FOR FOUR CONDUCTOR CORD ( )

CORD	L1 (RED)	L2 (WHITE)	L3 (BLACK)	(GREEN)
MOTOR	T1	T2	T3	GROUND

				TOLERANCES UNLESS SPECIFIED			DRAWN RDW 5/1/02		
				DEC.	INCHES		CHK		
				.X	±.1		APPD		
				.XX	±.01		SCALE 1=1		
				.XXX	±.005		REF		
				.XXXX	±.0005	MAT'L. DECAL - 004169		FMF	
NO.	REVISION	BY & DATE	CHK	ANG	±1/2°	FINISH		PREV	
THIS DRAWING IN DESIGN AND DETAIL IS OUR PROPERTY AND MUST NOT BE USED EXCEPT IN CONNECTION WITH OUR WORK ALL RIGHTS OF DESIGN AND INVENTION ARE RESERVED THIS IS AN ELECTRONICALLY GENERATED DOCUMENT - DO NOT SCALE THIS PRINT			RFP	5/1/02	CAD FILE 00510201ME		SIZE	DRAWING NO.	REV.
			DIST				A	005102-01ME	

## CERTIFICATION DATA SHEET

Model#: 182TTDW16009 AA  
 CONN. DIAGRAM: 005102.01ME  
 OUTLINE: 035530-900

WINDING#: T8635 DR 4  
 ASSEMBLY: F1 ONLY

## TYPICAL MOTOR PERFORMANCE DATA

HP	KW	SYNC. RPM	F.L. RPM	FRAME	ENCLOSURE	KVA CODE	DESIGN
1 1/2	1.12	1200	1170	182T	DP	K	B

PH	Hz	VOLTS	FL AMPS	START TYPE	DUTY	INSL	S.F	AMB°C	ELEVATION
3	60	575	2.5	LINE OR INVERTER	CONTINUOUS	F4	1.15	40	3300

FULL LOAD EFF: 86.5	3/4 LOAD EFF: -	1/2 LOAD EFF: -	GTD. EFF	ELEC. TYPE	NO LOAD AMPS
FULL LOAD PF: 60	3/4 LOAD PF: -	1/2 LOAD PF: -	0	SQ CAGE INV RATED	-

F.L. TORQUE	LOCKED ROTOR AMPS	L.R. TORQUE	B.D. TORQUE	F.L. RISE°C
- LB-FT	-	- LB-FT -	- LB-FT -	-

SOUND PRESSURE @ 3 FT.	SOUND POWER	ROTOR WK^2	MAX. WK^2	SAFE STALL TIME	STARTS /HOUR	APPROX. MOTOR WGT
0 dBA	10 dBA	0.51 LB-FT^2	0 LB-FT^2	0 SEC.	0	0 LBS.

## \*\*\* SUPPLEMENTAL INFORMATION \*\*\*

DE BRACKET TYPE	ODE BRACKET TYPE	MOUNT TYPE	ORIENTATION	SEVERE DUTY	HAZARDOUS LOCATION	DRIP COVER	SCREENS	PAINT
STANDARD	STANDARD	RIGID	HORIZONTAL	FALSE	NONE	FALSE	NONE	BLUE (ENAMEL)

BEARINGS		GREASE	SHAFT TYPE	SPECIAL DE	SPECIAL ODE	SHAFT MATERIAL	FRAME MATERIAL
DE	OPE						
BALL	BALL						
6206	6205	POLYREX EM	T	NONE	NONE	AINI 1045 (C-240)	ROLLED STEEL

THERMO-PROTECTORS				THERMISTORS	CONTROL	SPACE /n HEATERS
THERMOSTATS	PROTECTORS	WDG RTDs	BRG RTDs			
NONE	NOT	NONE	NONE	NONE	FALSE	NONE VOLTS

If Inverter equals NONE, contact factory for further information

\*  
N  
O  
T  
E  
S  
\*

INVERTER TORQUE: CONSTANT 10:1
INV. HP SPEED RANGE: NONE
ENCODER: NONE
NONE NONE
NONE NONE PPR
BRAKE: NONE NONE
NONE P/N NONE
NONE NONE
NONE FT-LB NONE V NONE Hz

DATE: 06/27/2017 01:38:57 AM  
 FORM 3531 REV.3 02/07/99  
 \*\* Subject to change without notice.

## Data Sheet

Date: 19-06-2017

Customer:

Attention:

Submitted by: FAREEDA DUDEKULA



182TTDW16009

Submittal

Data @ 575 V

## Motor Load Data

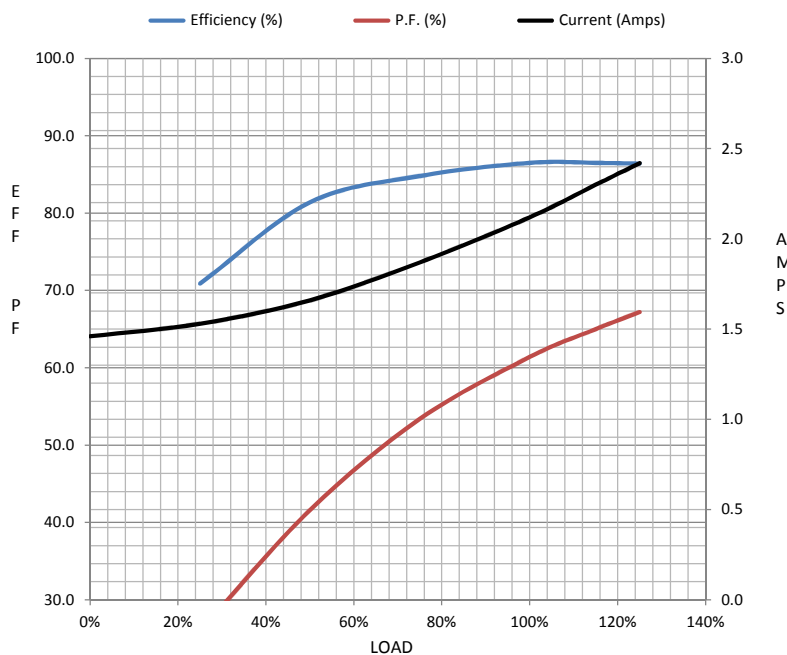
Load	0%	25%	50%	75%	100%	115%	125%	LR	
Current (Amps)	1.46	1.53	1.66	1.87	2.12	2.30	2.42	13.9	
Torque (ft-lb)	0.00	1.65	3.3	5.0	6.7	7.7	8.4	13.7	
RPM	1200	1195	1190	1184	1170	1,175	1172	0	
Efficiency (%)		70.9	81.4	84.8	86.5	86.5	86.4		
P.F. (%)	7.5	26.0	41.6	53.4	61.4	65.0	67.2	0.0	

## Motor Speed Data

	LR	Pull-Up	BD	Rated	Idle
Speed (RPM)	0	193	1021	1170	1200
Current (Amps)	13.9	13.0	6.7	2.12	1.46
Torque (ft-lb)	13.7	13.5	24.8	6.7	0.00

## Information Block

HP	1.5			
Sync. RPM	1200			
Frame	180			
Enclosure	DP			
Construction	TDW			
Voltage	575 V			
Frequency	60 Hz			
Design	B			
LR Code letter	L			
Service Factor	1.15			
Temp Rise @ FL	28 ° C			
Duty	CONT			
Ambient	40 ° C			
Elevation	1,000 feet			
Rotor/Shaft wk²	0.51 Lb-Ft²			
Ref Wdg	T8635 DR			
Sound Pressure @ 1M	0 dBA			
VFD Rating	CONSTANT 10:1			
Outline Dwg	035530-900			
Conn. Diag	005102.01ME			
Additional Specifications:				
0				
365THFS8036				
EQUIV CKT (OHMS / PHASE)				
R1	R2	X1	X2	Xm
0.0000	0.0000	0.0000	0.0000	0.0000



## Speed -Torque Curve

