

PRODUCT INFORMATION PACKET

Model No: 182TTDW16008

Catalog No: U908A

XRI® General Purpose General Purpose Motor, 5 HP, 3 Ph, 60 Hz, 575 V, 3600 RPM, 182T Frame, DP



Regal and Marathon are trademarks of Regal Rexnord Corporation or one of its affiliated companies.

©2022 Regal Rexnord Corporation, All Rights Reserved. MC017097E

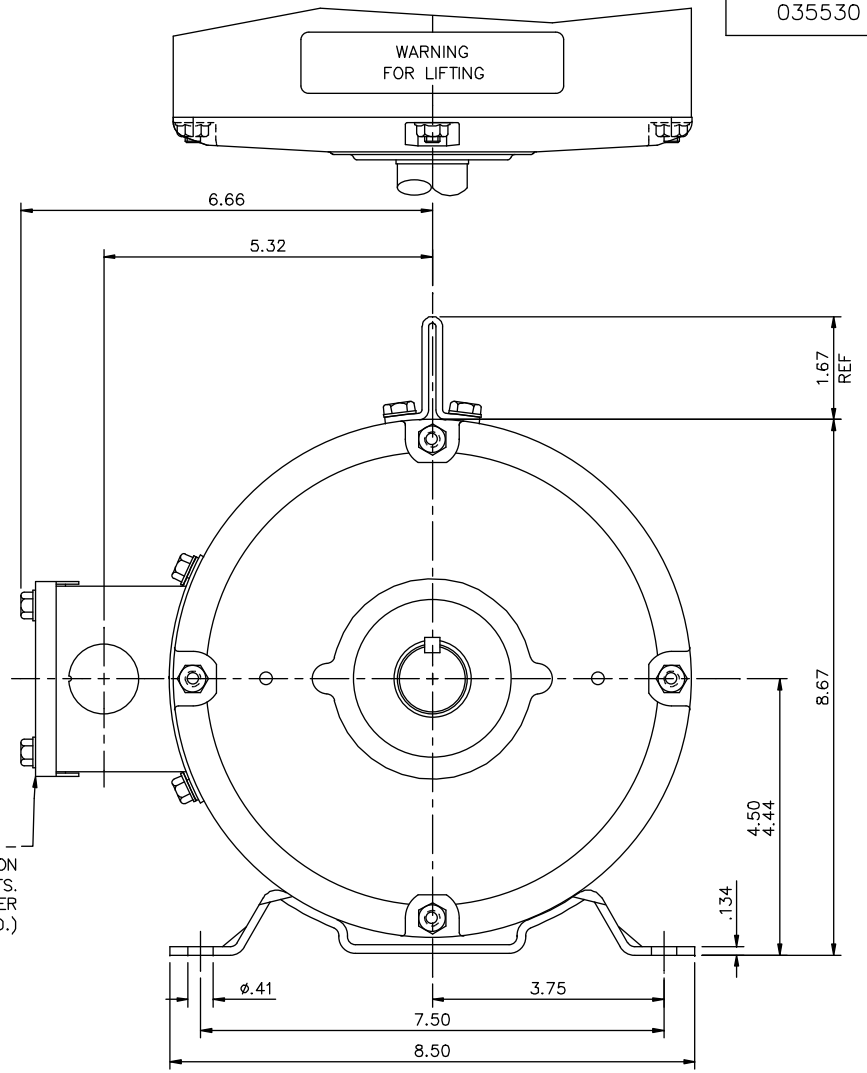
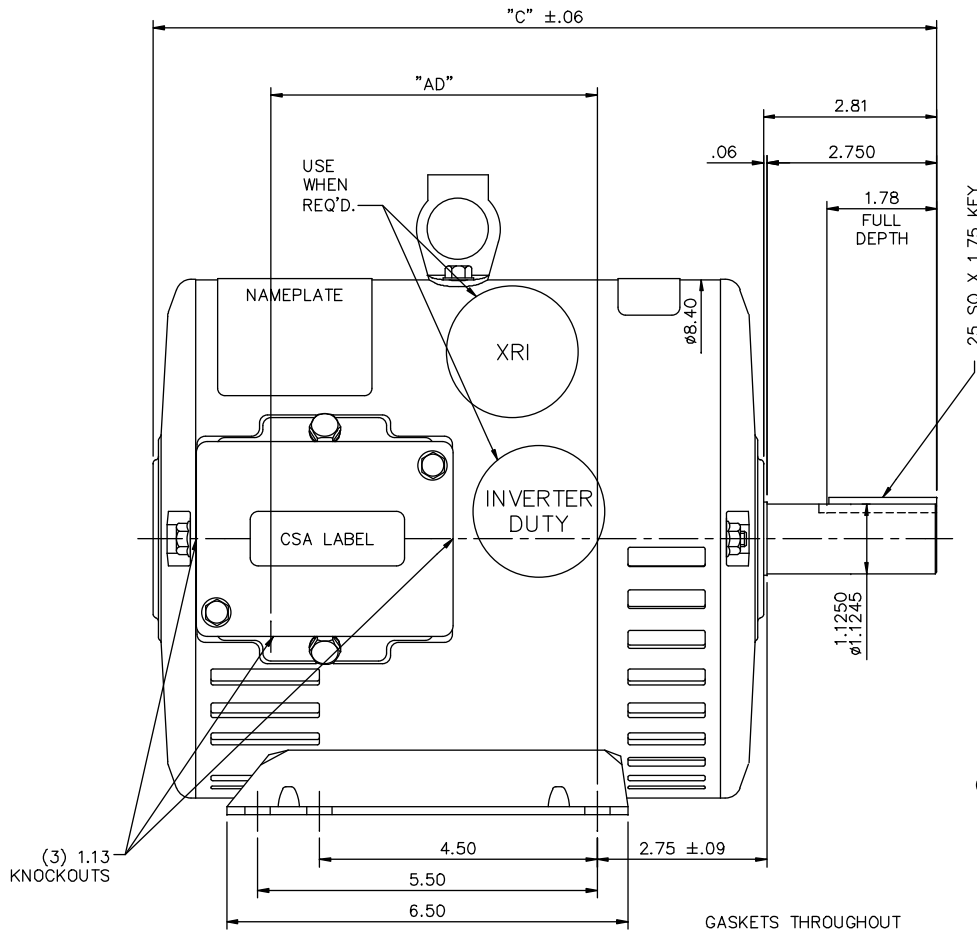


Nameplate Specifications

Output HP	5 Hp	Output KW	3.7 kW
Frequency	60 Hz	Voltage	575 V
Current	5.0 A	Speed	3500 rpm
Service Factor	1.15	Phase	3
Efficiency	86.5 %	Power Factor	86
Duty	Continuous	Insulation Class	F
Design Code	B	KVA Code	J
Frame	182T	Enclosure	Drip Proof
Thermal Protection	No Protection	Ambient Temperature	40 °C
Drive End Bearing Size	6206	Opp Drive End Bearing Size	6205
UL	Recognized	CSA	Y
CE	Y	IP Code	22
Number of Speeds	1		

Technical Specifications

Electrical Type	Squirrel Cage Induction Run	Starting Method	Across The Line
Poles	2	Rotation	Reversible
Resistance Main	0 Ohms	Mounting	Rigid Base
Motor Orientation	Horizontal	Drive End Bearing	Ball
Opp Drive End Bearing	Ball	Frame Material	Rolled Steel
Shaft Type	T	Overall Length	13.19 in
Frame Length	9.00 in	Shaft Diameter	1.125 in
Shaft Extension	2.81 in	Assembly/Box Mounting	F1/F2 CAPABLE
Connection Drawing	005102.01ME	Outline Drawing	035530-900

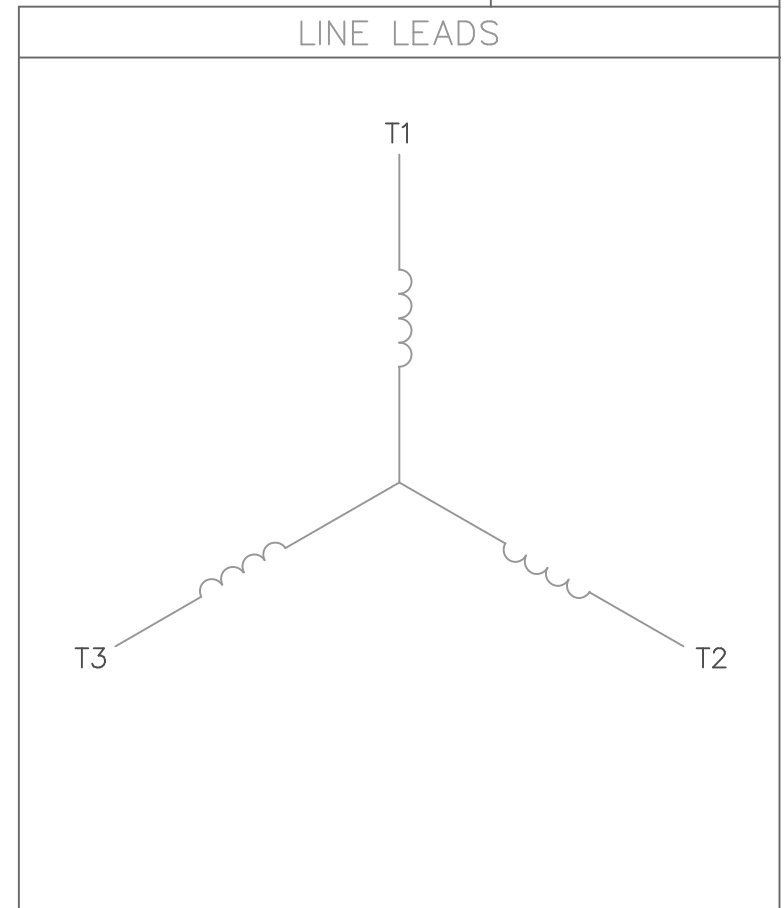
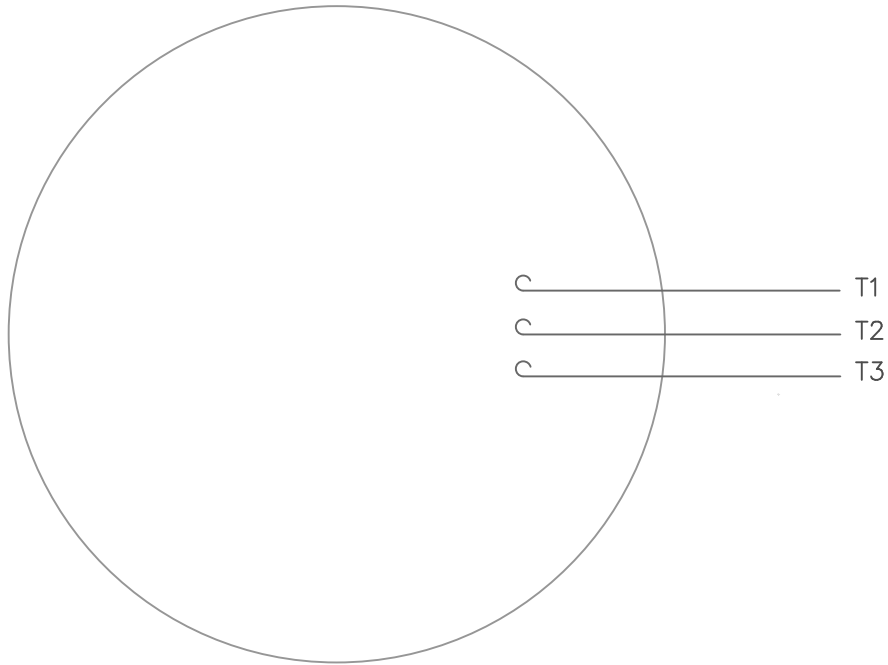


GASKETS THROUGHOUT

DASH NO.	"C"	"AD"
850	12.69	5.25
900	13.19	5.75
950	13.69	6.25
1000	14.19	6.75
1050	14.69	7.25
1100	15.19	7.75
1150	15.69	8.25

		TOLERANCES UNLESS SPECIFIED		MARATHON ELECTRIC		DRAWN YS 06/21/07		
		DEC.	INCHES			CHK		
		.X	±.1			APPD		
03	REMOVED INV & XRI DECALS AS PER ISSAC 12-5294	GR	10/30/12	SR	.XX ±.03	TITLE	OUTLINE - 180T FRAME	
02	ADDED STICKER LOCATIONS PER ECR 91487	JWM	12/04/07		.XXX ±.005		SCALE 1=2	
01	TITLE BLOCK WAS LEESON	YS	7/16/2007		.XXXX ±.0005	MAT'L.	REF 035464	
NO.	REVISION	BY & DATE	CHK	ANG	±1/2'	FINISH	PREV	
THIS DRAWING IN DESIGN AND DETAIL IS OUR PROPERTY AND MUST NOT BE USED EXCEPT IN CONNECTION WITH OUR WORK ALL RIGHTS OF DESIGN AND INVENTION ARE RESERVED THIS IS AN ELECTRONICALLY GENERATED DOCUMENT - DO NOT SCALE THIS PRINT				RFP	CAD FILE	035530	SIZE DRAWING NO.	
				DIST	NLV	B	035530	
							REV.	03

VIEW FROM OUTSIDE OF MOTOR AT SWITCH END.



CONNECT LEADS AS FOLLOWS
FOR FOUR CONDUCTOR CORD ()

CORD	L1 (RED)	L2 (WHITE)	L3 (BLACK)	(GREEN)
MOTOR	T1	T2	T3	GROUND

		TOLERANCES UNLESS SPECIFIED			DRAWN	RDW 5/1/02			
		DEC.	INCHES		CHK				
		.X	±.1		APPD				
		.XX	±.01		SCALE	1=1			
		.XXX	±.005		REF				
		.XXXX	±.0005	MAT'L.	DECAL - 004169	FMF			
NO.	REVISION	BY & DATE	CHK	ANG	±1/2'	FINISH	PREV		
THIS DRAWING IN DESIGN AND DETAIL IS OUR PROPERTY AND MUST NOT BE USED EXCEPT IN CONNECTION WITH OUR WORK ALL RIGHTS OF DESIGN AND INVENTION ARE RESERVED THIS IS AN ELECTRONICALLY GENERATED DOCUMENT - DO NOT SCALE THIS PRINT			RFP	5/1/02	CAD FILE	00510201ME	SIZE	DRAWING NO.	REV.
			DIST				A	005102-01ME	

Data Sheet

Date: 6/29/2017

Customer: _____

Attention: _____

Submitted by: FAREEDA DUDEKULA



182TTDW16008

Submittal

Data @ 208 V

Motor Load Data

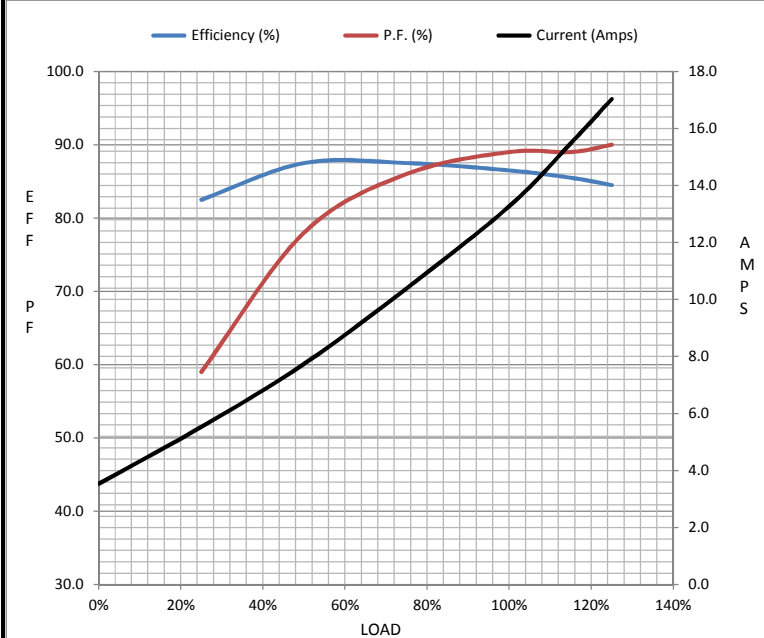
Load	0%	25%	50%	75%	100%	115%	125%	LR
Current (Amps)	3.5	5.5	7.7	10.4	13.3	15.5	17.0	102
Torque (ft-lb)	0.00	1.90	3.7	5.6	7.5	8.7	9.5	16.0
RPM	3600	3570	3540	3505	3475	3,445	3430	0
Efficiency (%)		82.5	87.5	87.5	86.5	85.5	84.5	
P.F. (%)	18.0	59.0	78.0	86.0	89.0	89.0	90.0	50.0

Motor Speed Data

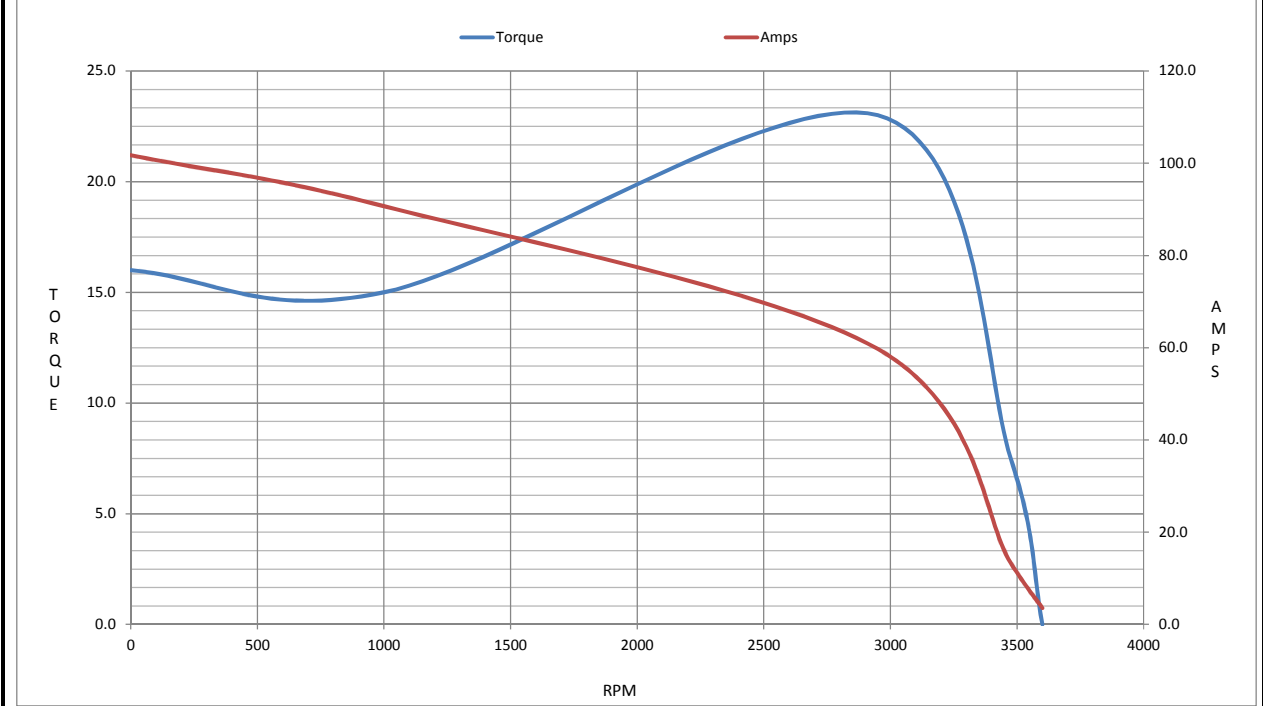
	LR	Pull-Up	BD	Rated	Idle
Speed (RPM)	0	1000	2950	3475	3600
Current (Amps)	102	90.7	59.7	13.3	3.5
Torque (ft-lb)	16.0	15.0	23.0	7.5	0.00

Information Block

HP	5.0			
Sync. RPM	3600			
Frame	182			
Enclosure	DP			
Construction	TDR			
Voltage	208 V			
Frequency	60 Hz			
Design	B			
LR Code letter	J			
Service Factor	1.15			
Temp Rise @ FL	35 ° C			
Duty	CONT			
Ambient	40 ° C			
Elevation	1,000 feet			
Rotor/Shaft wk ²	0.24 Lb-Ft ²			
Ref Wdg	K182264 NONE			
Sound Pressure @ 1M	71 dBA			
VFD Rating	VARIABLE 10:1			
Outline Dwg	NONE			
Conn. Diag	A-EE7340			
Additional Specifications:				
0				
0				
EQUIV CKT (OHMS / PHASE)				
R1	R2	X1	X2	Xm
0.4000	0.2880	0.9660	0.5240	27.3590



Speed -Torque Curve



EC Declaration of Conformity

The undersigned representing
the manufacturer:

Regal Beloit America
100 East Randolph St.
Wausau, WI 54401

and the authorized representative
established within the Community:

Marathon Electric UK
6F Thistleton Road Ind. Estate
Market Overton
Oakham, Rutland LE15 7PP UK

are committed to providing customers with products that comply with applicable regulations and international protocols to which they are subject, including the requirements of the European Parliament Directive on the Harmonization of the laws relating to electrical equipment designed for use within certain voltage limits (2014/35/EU).

Regal Beloit America declares that the following product(s), to which this declaration relates, are in conformity with the relevant sections of the EC standards listed below.

This statement supersedes any statements previously issued pertaining to the product(s) listed below and is subject to change without notice.

Model No : 182TTDW16008

(Model No. may contain prefix and/or suffix characters)

Catalog No : U908A

Rework No : N/A

Directives :

Low Voltage Directive 2014/35/EU

Harmonized Standards Used :

EN 60034-1: 2010 (IEC 60034-1: 2010)

EN 60034-5: 2001/A1:2007 (IEC 60034-5: 2000/A1:2006)

Authorized Representative:



Michael A. Logsdon
Vice President, Technology

Authorized Representative in the Community:



Julian Clark
Marketing Engineer

Created on 09/01/2022

CE 22