

PRODUCT INFORMATION PACKET

marathon[®]
Motors

Model No: 182TTDR8204

Catalog No: C104

5 HP, General Purpose Motors, 3 phase, 3600 RPM, 208-230/460 V, 182TC Frame, DP
General Purpose Motors

Regal and Marathon are trademarks of Regal Rexnord Corporation or one of its affiliated companies.
©2021 Regal Rexnord Corporation, All Rights Reserved. MC017097E

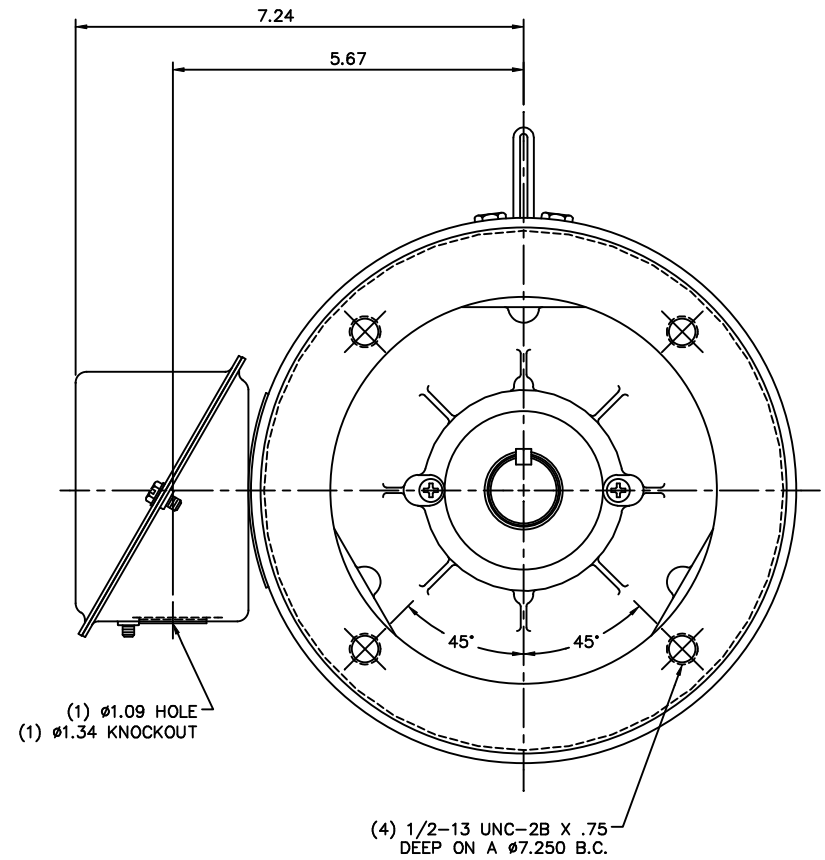
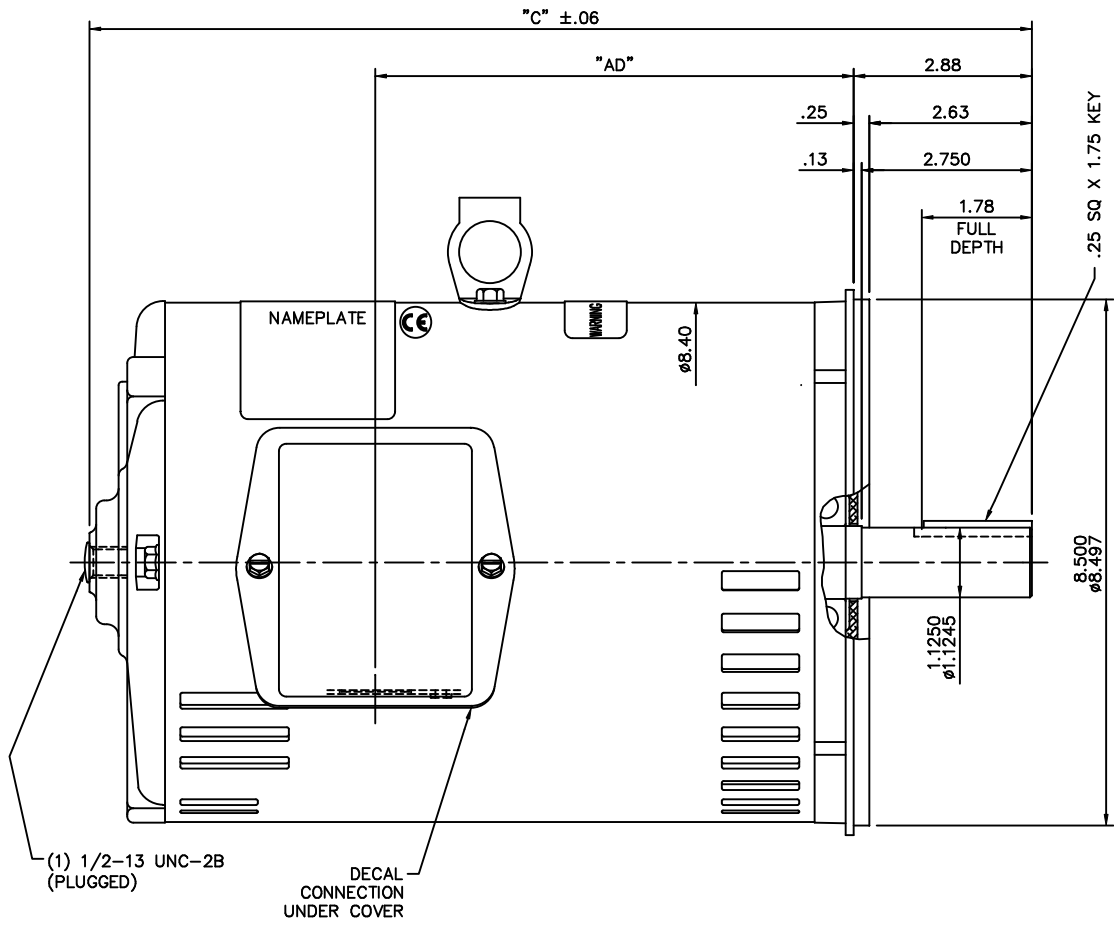
RegalRexnord

Nameplate Specifications

Output HP	5 Hp	Output KW	3.7 kW
Frequency	60 Hz	Voltage	208-230/460 V
Current	14.2-13.2/6.6 A	Speed	3500 rpm
Service Factor	1.15	Phase	3
Efficiency	82.5 %	Power Factor	87
Duty	Continuous	Insulation Class	F
Design Code	B	KVA Code	J
Frame	182TC	Enclosure	Drip Proof
Thermal Protection	No	Ambient Temperature	40 °C
Drive End Bearing Size	6206	Opp Drive End Bearing Size	6205
UL	Recognized	CSA	Y
CE	Y	IP Code	55
Number of Speeds	1		

Technical Specifications

Electrical Type	Squirrel Cage Induction Run	Starting Method	Across The Line
Poles	2	Rotation	Reversible
Mounting	Round	Motor Orientation	Horizontal
Drive End Bearing	Ball	Opp Drive End Bearing	Ball
Frame Material	Rolled Steel	Shaft Type	T
Overall Length	14.23 in	Frame Length	9.50 in
Shaft Diameter	1.125 in	Shaft Extension	2.75 in
Assembly/Box Mounting	F1 ONLY		
Outline Drawing	035478-950	Connection Drawing	005010-01ME

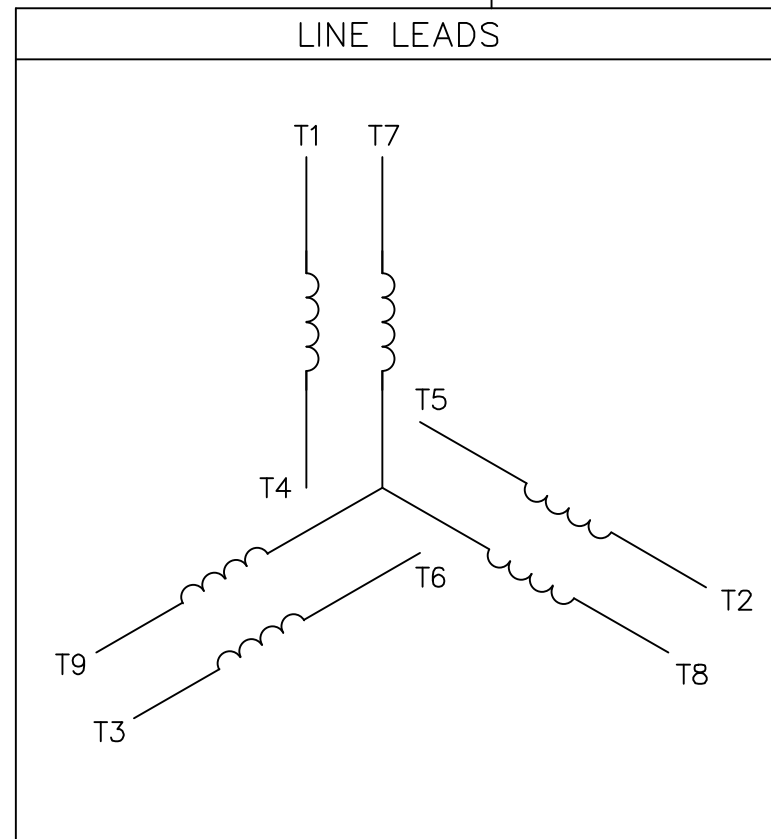
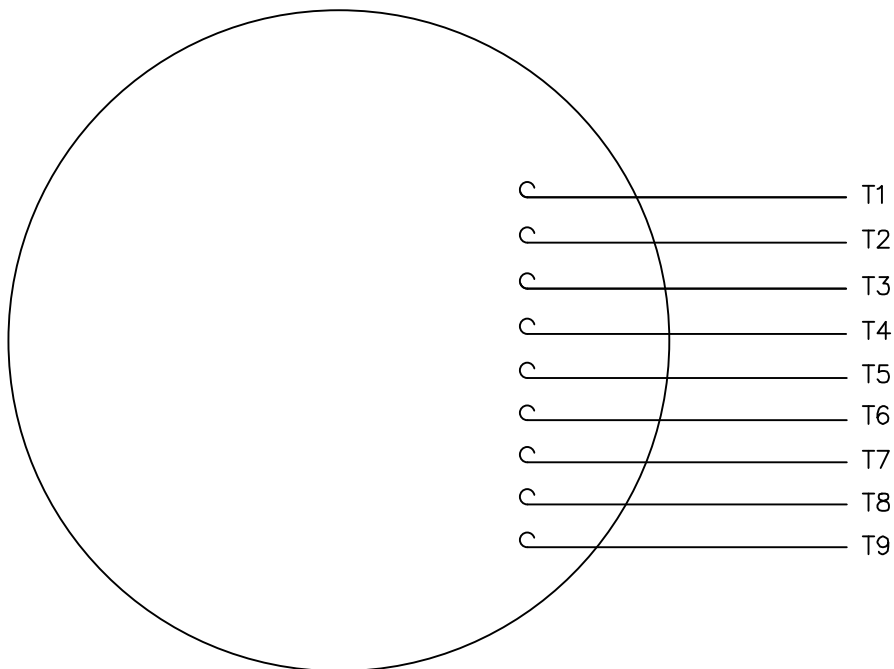


GASKETS THROUGHOUT
 MAXIMUM FACE RUNOUT TO BE .004 T.I.R.
 MAXIMUM PILOT ECCENTRICITY TO BE .004 T.I.R.
 PERMISSIBLE SHAFT RUNOUT TO BE .002 T.I.R.

DASH NO.	"C"	"AD"
900	13.73	6.23
950	14.23	6.73
1000	14.73	7.23
1050	15.23	7.73
1100	15.73	8.23
1150	16.23	8.73

				TOLERANCES UNLESS SPECIFIED		MARATHON ELECTRIC	DRAWN RDW 7/16/03	
				DEC.	INCHES		CHK	
				.X	±.1	TITLE OUTLINE - 180T FRAME DRIP PROOF - "C" FACE	APPD SW 7/16/03	SCALE 1=2
				.XX	±.03		REF	
				.XXX	±.005		FMF	
				.XXXX	±.0005		PREV	
01	ADDED "CE" DECAL PER ECR 83426		RDW 4/26/04	SW	±1/2"	MATL		
NO.	REVISION		BY & DATE	CHK	ANG	FINISH		
THIS DRAWING IN DESIGN AND DETAIL IS OUR PROPERTY AND MUST NOT BE USED EXCEPT IN CONNECTION WITH OUR WORK ALL RIGHTS OF DESIGN AND INVENTION ARE RESERVED THIS IS AN ELECTRONICALLY GENERATED DOCUMENT - DO NOT SCALE THIS PRINT				RFP	7/16/03	CAD FILE	035478	SIZE B
				DIST	NLV			DRAWING NO. 035478
								REV. 01

VIEW FROM OUTSIDE OF MOTOR AT SWITCH END.



VOLTAGE	L1	L2	L3	JOIN & INSULATE
HIGH	T1	T2	T3	(T4,T7) (T5,T8) (T6,T9)
LOW	T1,T7	T2,T8	T3,T9	T4,T5,T6

		TOLERANCES UNLESS SPECIFIED		DRAWN RDW 04/12/02						
		DEC.	INCHES	CHK						
		.X	±.1	APPD						
		.XX	±.01	SCALE 1=1						
		.XXX	±.005	REF FIG.2-51						
		.XXXX	±.0005	FMF						
NO.	REVISION	BY & DATE	CHK	ANG	±1/2'	FINISH	PREV			
			RFP	04/12/02		CAD FILE	00501001ME	SIZE	DRAWING NO.	REV.
			DIST					A	005010-01ME	

THIS DRAWING IN DESIGN AND DETAIL IS OUR PROPERTY AND MUST NOT BE USED EXCEPT IN CONNECTION WITH OUR WORK ALL RIGHTS OF DESIGN AND INVENTION ARE RESERVED THIS IS AN ELECTRONICALLY GENERATED DOCUMENT - DO NOT SCALE THIS PRINT