

# PRODUCT INFORMATION PACKET



Model No: 182TTDR7605

Catalog No: M114

Close-Coupled Pump Motor, 5 & 3 HP, 3 Ph, 60 & 50 Hz, 208-230/460 & 190/380 V, 3600 & 3000 RPM,  
182JP Frame, DP

Regal and Marathon are trademarks of Regal Rexnord Corporation or one of its affiliated companies.

©2023 Regal Rexnord Corporation, All Rights Reserved. MC017097E



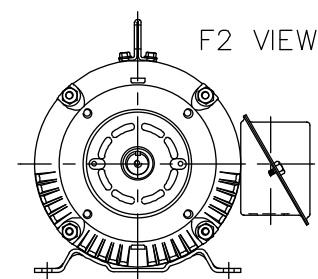
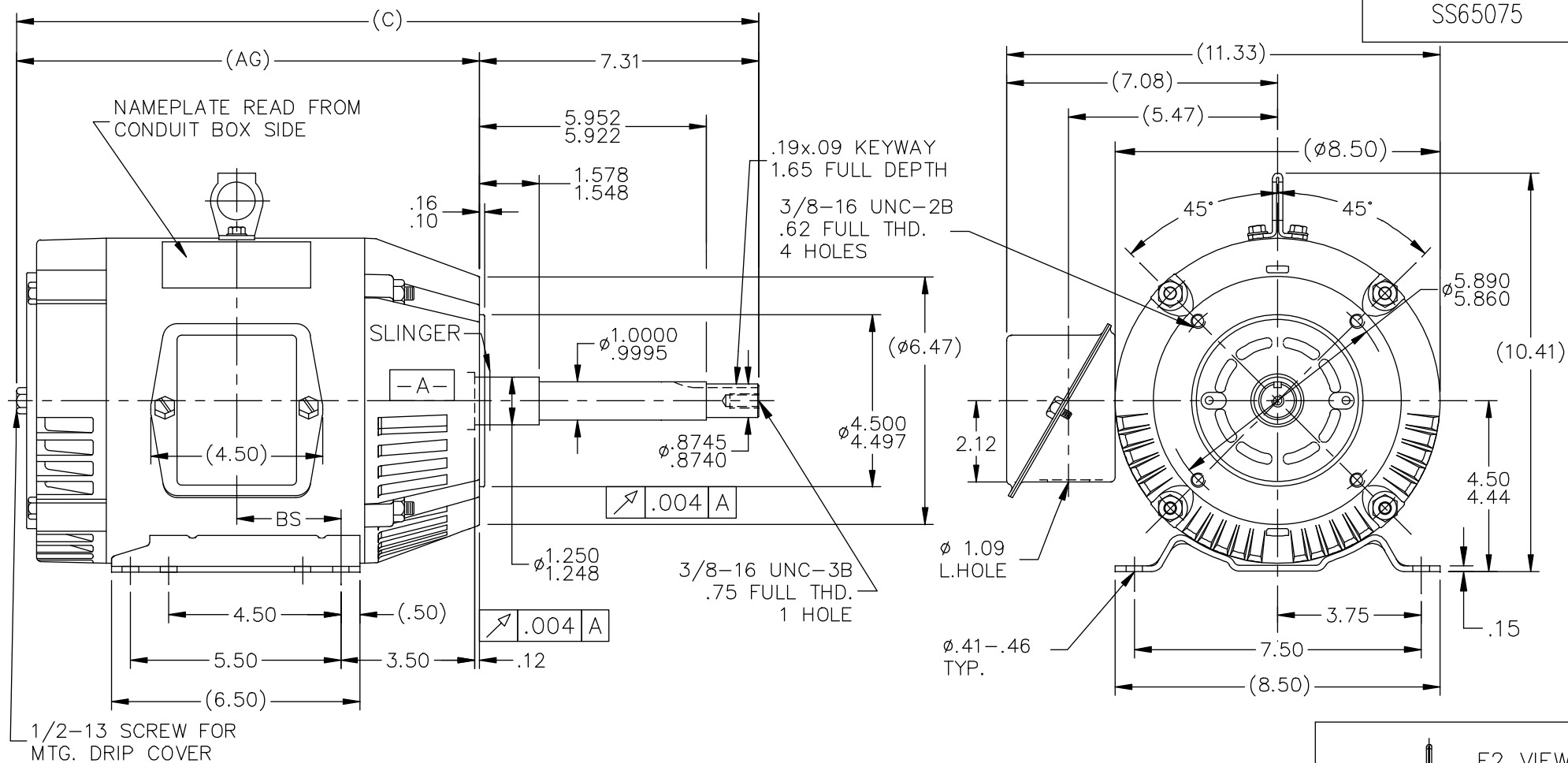
### Nameplate Specifications

Phase	3	Output HP	5 & 3 Hp
Output KW	3.7 & 2.2 kW	Voltage	208-230/460 & 190/380 V
Speed	3450 & 2905 rpm	Service Factor	1.15 & 1.0
Frame	182JP	Enclosure	Drip Proof
Thermal Protection	No Protection	Efficiency	82.5 & 81 %
Ambient Temperature	40 °C	Frequency	60 & 50 Hz
Current	14.6-14/7 & 11.2/5.6 A	Power Factor	81.9
Duty	Continuous	Insulation Class	B
Design Code	B	KVA Code	H
Drive End Bearing Size	6307	Opp Drive End Bearing Size	6205
UL	Recognized	CSA	Y
CE	Y	IP Code	22
Number of Speeds	1		

### Technical Specifications

Electrical Type	Squirrel Cage Induction Run	Starting Method	Across The Line
Poles	2	Rotation	Reversible
Resistance Main	4.56 Ohms	Mounting	Rigid Base
Motor Orientation	Horizontal	Drive End Bearing	Ball
Opp Drive End Bearing	Ball	Frame Material	Rolled Steel
Shaft Type	JP	Overall Length	18.41 in
Frame Length	5.75 in	Shaft Diameter	0.875 in
Shaft Extension	7.34 in	Assembly/Box Mounting	F1/F2 CAPABLE
Connection Drawing	A-EE7308	Outline Drawing	A-SS65075-575

SS65075



BOX CAN BE ROTATED IN 90° STEPS.  
BOX CAN BE MOUNTED ON OPPOSITE  
SIDE BY REMOVING BRACKETS AND  
TURNING FRAME 180°.

DASH	FR.	C	AG	BS	MOUNTING
575	182T	18.41	11.10	2.25	F1 OR F2
675	182/4T	19.41	12.10	2.75	F1 OR F2
725	182/4T	19.91	12.60	3.00	F1 ONLY
775	182/4T	20.41	13.10	3.25	F1 ONLY

			TOLERANCES UNLESS SPECIFIED		MARATHON ELECTRIC	DRAWN DJK 12-16-1992			
NO.	REVISION	BY & DATE	CHK	ANG		SCALE	1=4	REF	PREV
16	UPDATED DRAWING	RJW 04-20-2007	DEC.	INCHES					
15	REDRAWN IN AUTOCAD	TAT 07-13-2004	ML	.X	±.1				
14	ADDED LIFT LUG	CN 34025 NJS 07-23-2001		.XX	±.03				
13	REVISED MOUNTING	CN 27400-320 CAE 11-03-1999		.XXX	±.005				
12	ADDED MOUNTING TYPE	CN 27451 DRS 04-29-1999		.XXXX	±.0005				
					FINISH				
					TITLE OUTLINE				
					180T FR.-DR.PR.-C' FACE				
					MAT'L. JP EXT. / NEMA				
					CAD FILE ss65075				
					SIZE A				
					DRAWING NO. SS65075				
					PAGE OF				
					REV. 16				

THIS DRAWING IN DESIGN AND DETAIL IS OUR PROPERTY AND MUST NOT BE USED EXCEPT  
IN CONNECTION WITH OUR WORK ALL RIGHTS OF DESIGN AND INVENTION ARE RESERVED  
THIS IS AN ELECTRONICALLY GENERATED DOCUMENT - DO NOT SCALE THIS PRINT

RFP  
DIST LB

CAD FILE ss65075

SIZE A  
DRAWING NO. SS65075  
PAGE OF  
REV. 16



NO.	REVISION	BY & DATE	CHK	ANG	TOLERANCES UNLESS SPECIFIED		DRAWN RM	ML	OF	REV.
					DEC.	INCHES				
5	CHG TO REGAL LOGO	SL 09/10/2015	AB				 <b>Regal Beloit America, Inc.</b>			
4	REVISED IEC NOTATIONS	MSG 11/15/2011	CMN	.X	±.1					
3	ADDED IEC NOTATIONS... (U1), (V1) ETC. MU95194	MSG 5/10/2010	MJS	.XX	±.02					
2	ADDED THE OPTIONAL CORD CONNECTION MU46318	RDH 04/24/2003	DRS	.XXX	±.005					
1	REDRAWN	RM 11/20/1990		.XXXX	±.0005					
							TITLE			
							3Ø - DUAL VOLTAGE MOTOR			
							MAT'L.			
							FINISH			
							CAD FILE ee7308			
							SIZE			
							A			
							DRAWING NO.			
							EE7308			
							PAGE			
							5			

THIS DRAWING IN DESIGN AND DETAIL IS OUR PROPERTY AND MUST NOT BE USED EXCEPT  
IN CONNECTION WITH OUR WORK ALL RIGHTS OF DESIGN AND INVENTION ARE RESERVED  
THIS IS AN ELECTRONICALLY GENERATED DOCUMENT - DO NOT SCALE THIS PRINT