

# PRODUCT INFORMATION PACKET

**marathon®**  
Motors

Model No: 182TTDR7413

Catalog No: Y453

Other Purpose Motor, 2 & 0.89 HP, 3 Ph, 60 & 60 Hz, 200-230 & 200-230 V, 1800 & 1800 RPM,  
182T Frame, DP



Regal and Marathon are trademarks of Regal Rexnord Corporation or one of its affiliated companies.

©2023 Regal Rexnord Corporation, All Rights Reserved. MC017097E

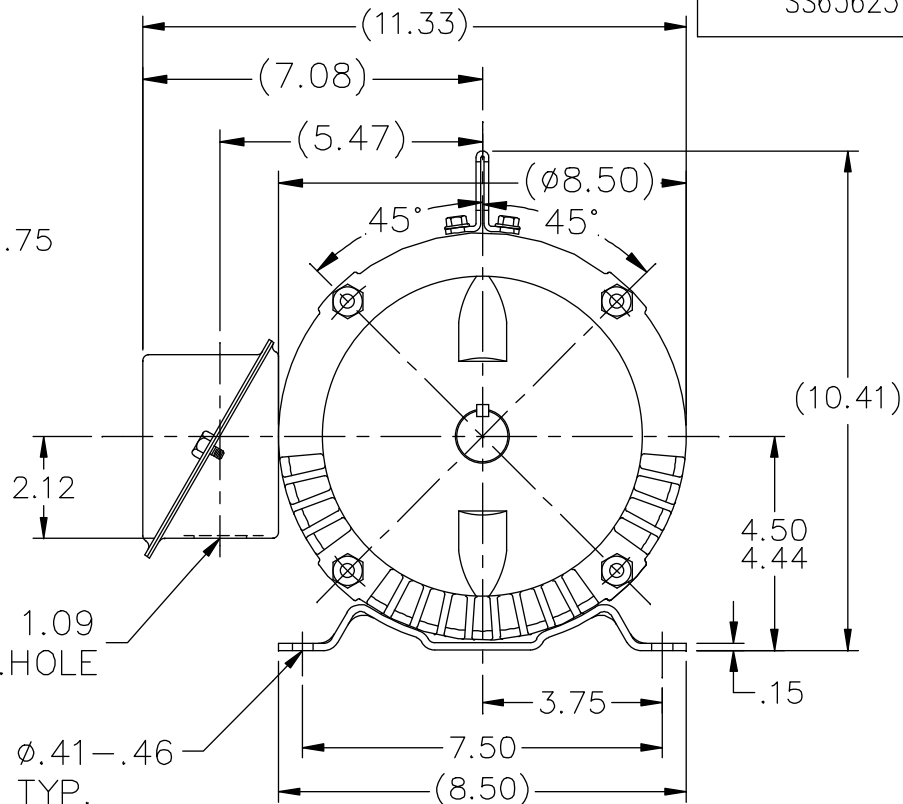
**RegalRexnord**

### Nameplate Specifications

Phase	3	Output HP	2 & 0.89 Hp
Output KW	1.5 & 0.66 kW	Voltage	200-230 & 200-230 V
Speed	1760 & 1155 rpm	Service Factor	1.15 & 1.15
Frame	182T	Enclosure	Drip Proof
Thermal Protection	No Protection	Efficiency	81 & 75.5 %
Ambient Temperature	40 °C	Frequency	60 & 60 Hz
Current	6.5-6.3 & 3.5-3.5 A	Power Factor	73.5
Duty	Continuous	Insulation Class	B
Design Code	2VT	KVA Code	L
Drive End Bearing Size	6206	Opp Drive End Bearing Size	6203
UL	Recognized	CSA	Y
CE	Y	IP Code	22
Number of Speeds	2		

### Technical Specifications

Electrical Type	Squirrel Cage Induction Run	Starting Method	Across The Line
Poles	4//6	Rotation	Reversible
Resistance Main	10.34 Ohms	Mounting	Rigid Base
Motor Orientation	Horizontal	Drive End Bearing	Ball
Opp Drive End Bearing	Ball	Frame Material	Rolled Steel
Shaft Type	T	Overall Length	13.72 in
Frame Length	6.75 in	Shaft Diameter	1.125 in
Shaft Extension	2.75 in	Assembly/Box Mounting	F1/F2 CAPABLE
Connection Drawing	A-EE7317	Outline Drawing	A-SS65625-675

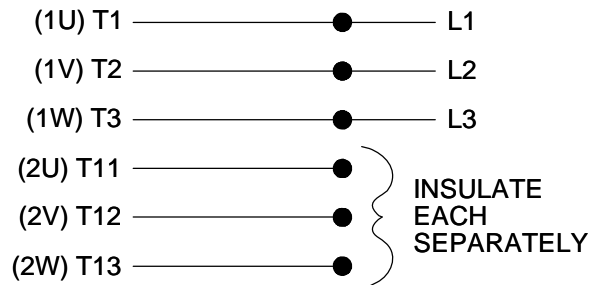
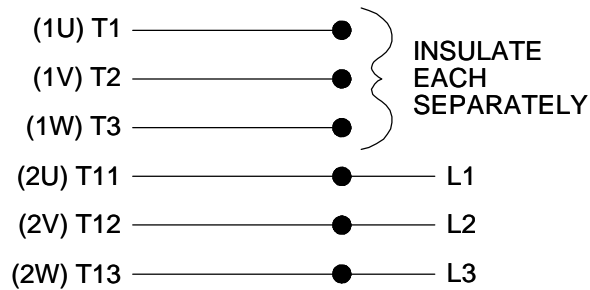


DASH	FB	C	BC	MOUNTING
------	----	---	----	----------

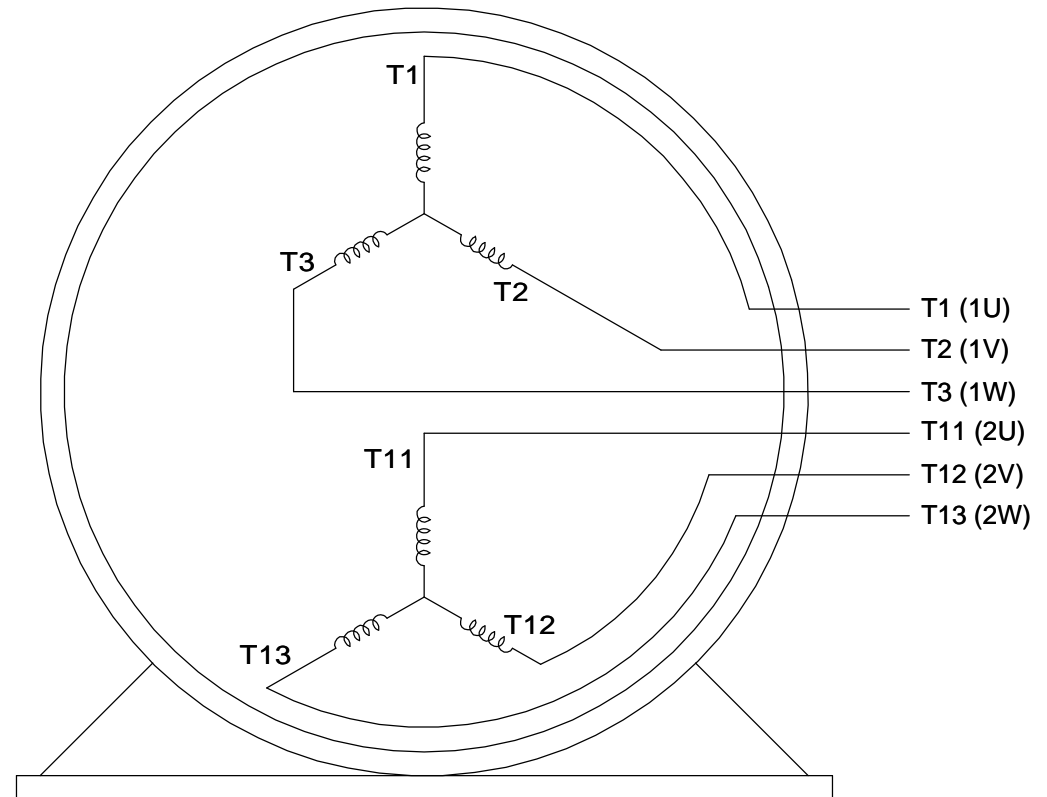
A technical drawing of a circular hatch cover. The cover is shown in a top-down view, featuring a central locking mechanism with a handle and a keyhole. The cover is secured by a ring of bolts around its perimeter. A detail view on the right shows a close-up of the locking mechanism, highlighting the handle and the keyhole. The drawing includes dimension lines and a scale bar.

F2 VIEW (WHEN APPLICABLE)


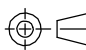
10/31/2012 6:53:05 AM - Converted by Connexus

LOW SPEEDHIGHSPEED

### THREE PHASE, SINGLE VOLT, 6 LEAD 2 SPEED REVERSIBLE MOTOR

VIEW OF TERMINAL END

TO REVERSE ROTATION ON  
EITHER SPEED: INTERCHANGE  
ANY 2 LEADS ON THE  
WINDING IN USE.

DRAWING REVISION C	REVISION BY JJB	DATE 10-25-2017		DRAWN BY LZ	 Regal Beloit America, Inc.			
ECO ECO-0132917	APPROVED BY TLB	DATE 10-30-2017		DATE 01-05-1994	DESCRIPTION <b>CONN DIAGRAM-INTERNAL</b> 3 PHASE - SINGLE - 2 SPEED REVERSIBLE			
ECO DESCRIPTION REVISED PER ECO & UPDATED TO STANDARDS				APPROVED BY GK				
COPYRIGHT REGAL BELOIT AMERICA, INC. ALL RIGHTS RESERVED. PROPRIETARY AND CONFIDENTIAL INFORMATION - THIS DOCUMENT IS THE PROPERTY OF REGAL BELOIT AMERICA, INC. ("OWNER") AND CONTAINS OWNER'S PROPRIETARY INFORMATION. ANY PERSON, CORPORATION OR OTHER FIRM RECEIVING IT IS DEEMED, BY RECEIVING IT, TO AGREE THAT IT, AND/OR ANY PART OF IT, SHALL NOT BE DISCLOSED TO ANY PERSON, CORPORATION OR OTHER ENTITY, DUPLICATED, AND/OR USED, EXCEPT AS EXPRESSLY APPROVED IN WRITING IN ADVANCE BY OWNER. THIS DOCUMENT SHALL BE RETURNED TO OWNER UPON REQUEST. IT MAY BE SUBJECT TO CERTAIN RESTRICTIONS UNDER APPLICABLE EXPORT CONTROL LAWS AND REGULATIONS.				DATE 01-17-1994				
				REFERENCE	MATERIAL	PROCESS/FINISH		
			THIRD ANGLE PROJECTION 	SIZE A	DRAWING NUMBER EE7317		SHEET 1 OF 1	