

PRODUCT INFORMATION PACKET

marathon®
Motors

Model No: 182TTDR7411

Catalog No: Y467

Other Purpose Motor, 2 & 0.50 HP, 3 Ph, 60 & 60 Hz, 460 & 460 V, 1800 & 1800 RPM, 182T Frame, DP



Regal and Marathon are trademarks of Regal Rexnord Corporation or one of its affiliated companies.

©2023 Regal Rexnord Corporation, All Rights Reserved. MC017097E

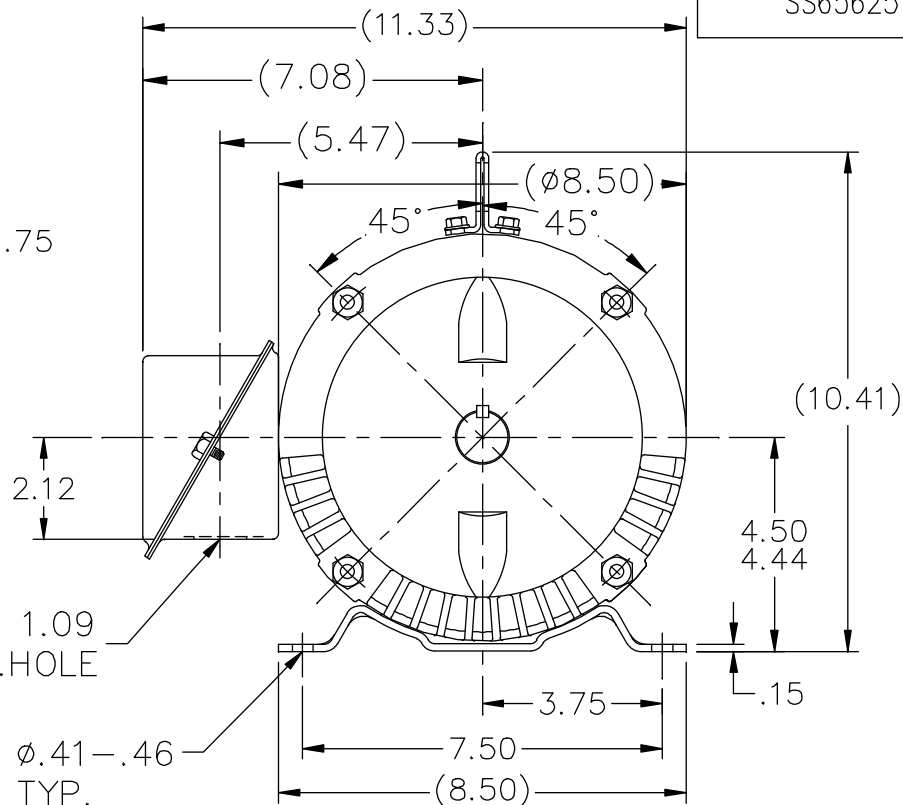
RegalRexnord

Nameplate Specifications

Phase	3	Output HP	2 & 0.50 Hp
Output KW	1.5 & 0.37 kW	Voltage	460 & 460 V
Speed	1755 & 870 rpm	Service Factor	1.15 & 1.15
Frame	182T	Enclosure	Drip Proof
Thermal Protection	No Protection	Efficiency	80 & 64 %
Ambient Temperature	40 °C	Frequency	60 & 60 Hz
Current	3 & 1.2 A	Power Factor	81
Duty	Continuous	Insulation Class	B
Design Code	2VT	KVA Code	J
Drive End Bearing Size	6206	Opp Drive End Bearing Size	6203
UL	Recognized	CSA	Y
CE	Y	IP Code	22
Number of Speeds	2		

Technical Specifications

Electrical Type	Squirrel Cage Induction Run	Starting Method	Across The Line
Poles	4//8	Rotation	Reversible
Resistance Main	14.8 Ohms	Mounting	Rigid Base
Motor Orientation	Horizontal	Drive End Bearing	Ball
Opp Drive End Bearing	Ball	Frame Material	Rolled Steel
Shaft Type	T	Overall Length	13.22 in
Frame Length	6.25 in	Shaft Diameter	1.125 in
Shaft Extension	2.75 in	Assembly/Box Mounting	F1/F2 CAPABLE
Outline Drawing	A-SS65625-625	Connection Drawing	A-EE7317



DASH	FR	C	BS	MOUNTING
------	----	---	----	----------

The drawing shows a circular machine component, possibly a pump or valve, in a cross-sectional view. The main body is circular with a central vertical axis. Inside, there are two large, curved, blade-like components (impeller or valve leaves) positioned symmetrically. The top of the component has a vertical shaft or rod passing through it, secured with a nut and washer. The bottom of the component has a flange with four mounting feet. To the right, there is a detailed view of a flange connection, showing a circular flange with a central bolt or pin and a rectangular plate attached to it.

F2 VIEW (WHEN APPLICABLE)

10/31/2012 6:53:05 AM - Converted by Connexus

LOW SPEED

(1U) T1 ————— ● ————— L1

(1V) T2 ————— ● ————— L2

(1W) T3 ————— ● ————— L3

(2U) T11 ————— ●

(2V) T22 ————— ●

(2W) T13 ————— ●

} INSULATE EACH SEPARATELY

HIGHSPEED

(1U) T1 ———●———

(1V) T2 ———●———

(1W) T3 ———●———

INSULATE EACH SEPARATELY

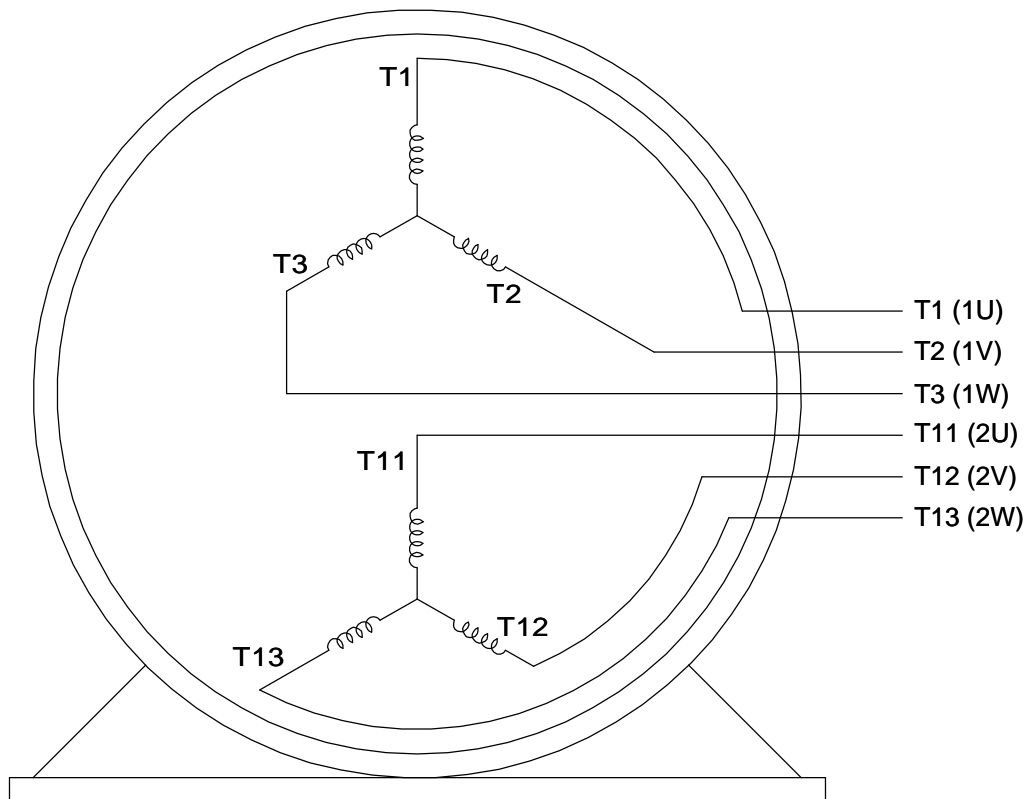
(2U) T11 ———●——— L1

(2V) T12 ———●——— L2

(2W) T13 ———●——— L3

TO REVERSE ROTATION ON
EITHER SPEED: INTERCHANGE
ANY 2 LEADS ON THE
WINDING IN USE.

THREE PHASE, SINGLE VOLT, 6 LEAD
2 SPEED REVERSIBLE MOTOR



VIEW OF TERMINAL END

DRAWING REVISION C		REVISION BY JJJ		DATE 10-25-2017		<div></div>	DRAWN BY LZ		<div><div>REGAL™</div><div>Regal Beloit America, Inc.</div></div>						
ECO ECO-0132917		APPROVED BY TLB		DATE 10-30-2017			DATE 01-05-1994								
<div>ECO DESCRIPTION REVISED PER ECO & UPDATED TO STANDARDS COPYRIGHT REGAL BELOIT AMERICA, INC. ALL RIGHTS RESERVED. PROPRIETARY AND CONFIDENTIAL INFORMATION - THIS DOCUMENT IS THE PROPERTY OF REGAL BELOIT AMERICA, INC. ("OWNER") AND CONTAINS OWNER'S PROPRIETARY INFORMATION. ANY PERSON, CORPORATION OR OTHER FIRM RECEIVING IT IS DEEMED, BY RECEIVING IT, TO AGREE THAT IT, AND/OR ANY PART OF IT, SHALL NOT BE DISCLOSED TO ANY PERSON, CORPORATION OR OTHER ENTITY, DUPLICATED, AND/OR USED, EXCEPT AS EXPRESSLY APPROVED IN WRITING IN ADVANCE BY OWNER. THIS DOCUMENT SHALL BE RETURNED TO OWNER UPON REQUEST. IT MAY BE SUBJECT TO CERTAIN RESTRICTIONS UNDER APPLICABLE EXPORT CONTROL LAWS AND REGULATIONS.</div>							APPROVED BY GK		<div>DESCRIPTION CONN DIAGRAM-INTERNAL 3 PHASE - SINGLE - 2 SPEED REVERSIBLE</div>						
							DATE 01-17-1994								
													REFERENCE		MATERIAL
						THIRD ANGLE PROJECTION		<div><div></div></div>		SIZE A		DRAWING NUMBER EE7317		SHEET 1 OF 1	