

# PRODUCT INFORMATION PACKET

**marathon®**  
Motors

Model No: 182TTDR7356

Catalog No: M113

Close-Coupled Pump Motor, 3 & 2 HP, 3 Ph, 60 & 50 Hz, 208-230/460 & 190/380 V, 1800 & 1500 RPM,  
182JP Frame, DP

Regal and Marathon are trademarks of Regal Rexnord Corporation or one of its affiliated companies.

©2023 Regal Rexnord Corporation, All Rights Reserved. MC017097E

**RegalRexnord**

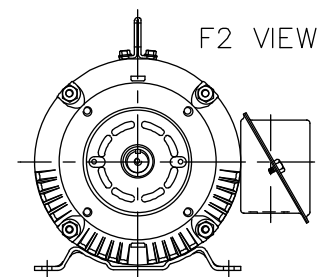
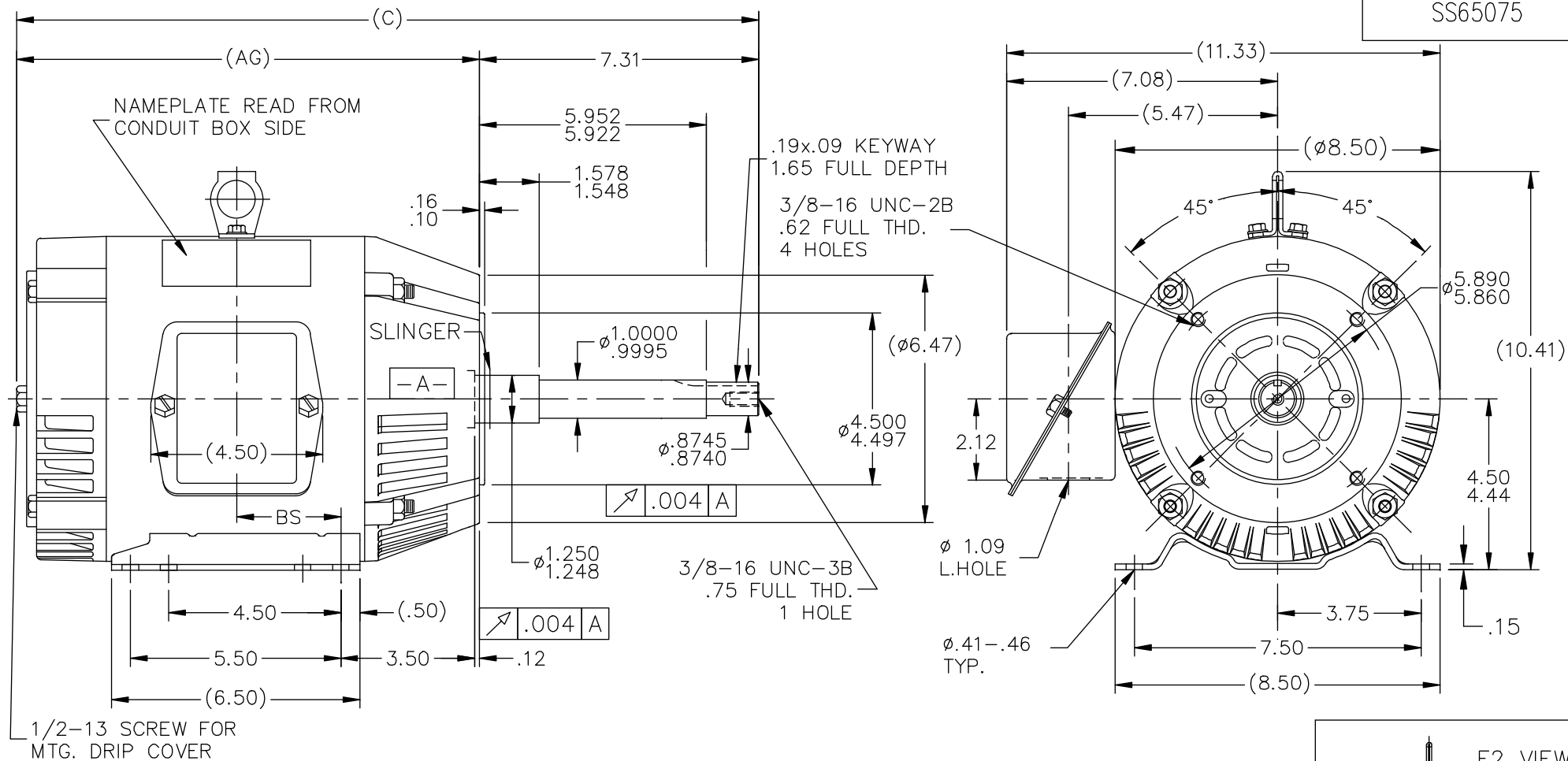
### Nameplate Specifications

Phase	3	Output HP	3 & 2 Hp
Output KW	2.2 & 1.5 kW	Voltage	208-230/460 & 190/380 V
Speed	1730 & 1450 rpm	Service Factor	1.15 & 1.0
Frame	182JP	Enclosure	Drip Proof
Thermal Protection	No Protection	Efficiency	81.5 & 82.5 %
Ambient Temperature	40 °C	Frequency	60 & 50 Hz
Current	9.2-9/4.5 & 7.2/3.6 A	Power Factor	77.7
Duty	Continuous	Insulation Class	B
Design Code	B	KVA Code	J
Drive End Bearing Size	6307	Opp Drive End Bearing Size	6205
UL	Recognized	CSA	Y
CE	Y	IP Code	22
Number of Speeds	1		

### Technical Specifications

Electrical Type	Squirrel Cage Induction Run	Starting Method	Across The Line
Poles	4	Rotation	Reversible
Resistance Main	7.2 Ohms	Mounting	Rigid Base
Motor Orientation	Horizontal	Drive End Bearing	Ball
Opp Drive End Bearing	Ball	Frame Material	Rolled Steel
Shaft Type	JP	Overall Length	18.41 in
Frame Length	5.75 in	Shaft Diameter	0.875 in
Shaft Extension	7.34 in	Assembly/Box Mounting	F1/F2 CAPABLE
Connection Drawing	A-EE7308	Outline Drawing	A-SS65075-575

SS65075



BOX CAN BE ROTATED IN 90° STEPS.  
BOX CAN BE MOUNTED ON OPPOSITE  
SIDE BY REMOVING BRACKETS AND  
TURNING FRAME 180°.

DASH	FR.	C	AG	BS	MOUNTING
575	182T	18.41	11.10	2.25	F1 OR F2
675	182/4T	19.41	12.10	2.75	F1 OR F2
725	182/4T	19.91	12.60	3.00	F1 ONLY
775	182/4T	20.41	13.10	3.25	F1 ONLY

			TOLERANCES UNLESS SPECIFIED		MARATHON ELECTRIC	DRAWN DJK 12-16-1992			
NO.	REVISION	BY & DATE	CHK	ANG		SCALE	1=4	REF	PREV
16	UPDATED DRAWING	RJW 04-20-2007	DEC.	INCHES					
15	REDRAWN IN AUTOCAD	TAT 07-13-2004	ML	.X	±.1				
14	ADDED LIFT LUG	CN 34025 NJS 07-23-2001		.XX	±.03				
13	REVISED MOUNTING	CN 27400-320 CAE 11-03-1999		.XXX	±.005				
12	ADDED MOUNTING TYPE	CN 27451 DRS 04-29-1999		.XXXX	±.0005				
					FINISH				
					RFP	CAD FILE ss65075	SIZE A	DRAWING NO. SS65075	PAGE OF 16
					DIST LB				

THIS DRAWING IN DESIGN AND DETAIL IS OUR PROPERTY AND MUST NOT BE USED EXCEPT  
IN CONNECTION WITH OUR WORK ALL RIGHTS OF DESIGN AND INVENTION ARE RESERVED  
THIS IS AN ELECTRONICALLY GENERATED DOCUMENT - DO NOT SCALE THIS PRINT



NO.	REVISION	BY & DATE	CHK	ANG	TOLERANCES UNLESS SPECIFIED		RFP	CAD FILE	SIZE	DRAWING NO.	PAGE	OF	REV.
					DEC.	INCHES							
5	CHG TO REGAL LOGO	SL 09/10/2015	AB		DEC.	INCHES							
4	REVISED IEC NOTATIONS	MSG 11/15/2011	CMN	.X		±.1							
3	ADDED IEC NOTATIONS... (U1), (V1) ETC. MU95194	MSG 5/10/2010	MJS	.XX		±.02							
2	ADDED THE OPTIONAL CORD CONNECTION MU46318	RDH 04/24/2003	DRS	.XXX		±.005							
1	REDRAWN	RM 11/20/1990		.XXXX		±.0005							
						±7'30"							
THIS DRAWING IN DESIGN AND DETAIL IS OUR PROPERTY AND MUST NOT BE USED EXCEPT IN CONNECTION WITH OUR WORK ALL RIGHTS OF DESIGN AND INVENTION ARE RESERVED THIS IS AN ELECTRONICALLY GENERATED DOCUMENT – DO NOT SCALE THIS PRINT								CAD FILE ee7308	A	EE7308			5