

PRODUCT INFORMATION PACKET



Model No: 182TTDR7101

Catalog No: H182

1 HP General Purpose Motor, 3 phase, 900 RPM, 230/460 V, 182T Frame, ODP
General Purpose Motors

Regal and Marathon are trademarks of Regal Rexnord Corporation or one of its affiliated companies.
©2021 Regal Rexnord Corporation, All Rights Reserved. MC017097E



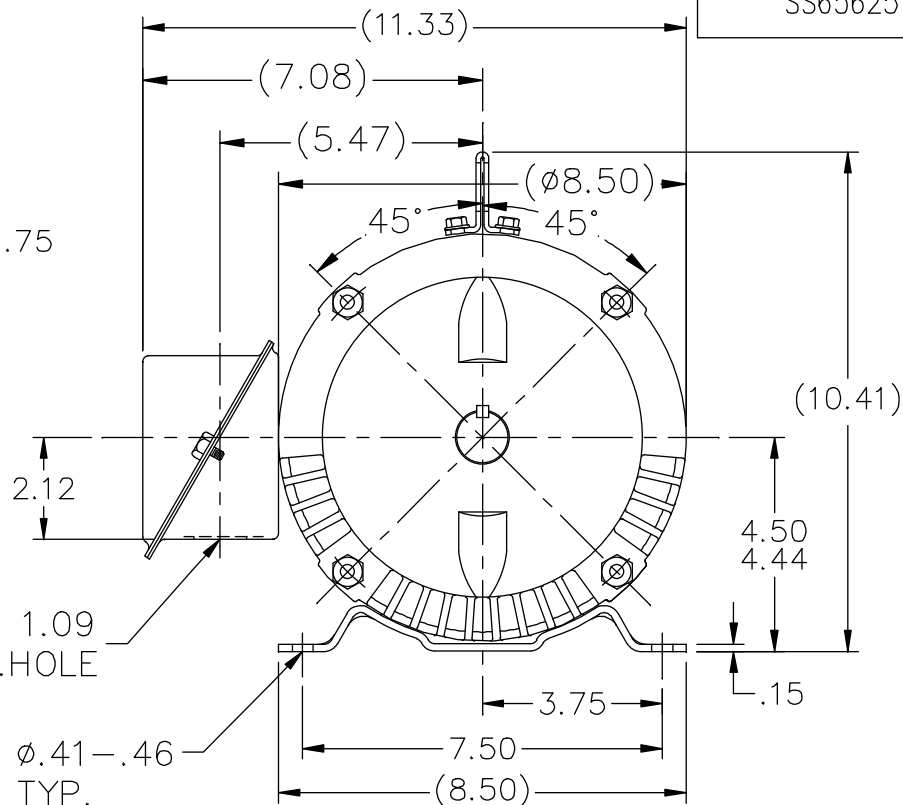
Nameplate Specifications

Output HP	1 Hp	Output KW	0.75 kW
Frequency	60 Hz	Voltage	230/460 V
Current	4.0/2.0 A	Speed	850 rpm
Service Factor	1.15	Phase	3
Efficiency	72 %	Power Factor	62
Duty	Continuous	Insulation Class	B
Design Code	B	KVA Code	G
Frame	182T	Enclosure	Drip Proof
Thermal Protection	No	Ambient Temperature	40 °C
Drive End Bearing Size	6206	Opp Drive End Bearing Size	6203
UL	Recognized	CSA	Y
CE	Y	IP Code	22
Number of Speeds	1		

Technical Specifications

Electrical Type	Squirrel Cage Induction Run	Starting Method	Across The Line
Poles	8	Rotation	Reversible
Resistance Main	21.4 Ohms	Mounting	Rigid Base
Motor Orientation	Horizontal	Drive End Bearing	Ball
Opp Drive End Bearing	Ball	Frame Material	Rolled Steel
Shaft Type	T	Overall Length	12.72 in
Frame Length	5.75 in	Shaft Diameter	1.125 in
Shaft Extension	2.75 in	Assembly/Box Mounting	F1/F2 CAPABLE
Outline Drawing	A-SS65625-575	Connection Drawing	A-EE7308

This is an uncontrolled document once printed or downloaded and is subject to change without notice. Date Created:10/12/2021



DASH	FR	C	BS	MOUNTING
------	----	---	----	----------

The drawing shows a circular machine component, possibly a pump or valve, in a cross-sectional view. The main body is circular with a central vertical axis. Inside, there are two large, curved, blade-like components (impeller or valve segments) positioned symmetrically. The top of the component has a vertical shaft or rod passing through it, secured with a nut and washer. The bottom of the component has a flange with four mounting feet. To the right, there is a detailed view of a flange connection, showing a circular flange with a central bolt or pin and a rectangular plate attached to it.

F2 VIEW (WHEN APPLICABLE)

10/31/2012 6:53:05 AM - Converted by Connexus



NO.	REVISION	BY & DATE	CHK	ANG	TOLERANCES UNLESS SPECIFIED		DRAWN RM	11/20/1990
					DEC.	INCHES		
5	CHG TO REGAL LOGO	SL 09/10/2015	AB				CHK	ML 11/21/1990
4	REVISED IEC NOTATIONS	MSG 11/15/2011	CMN	.X	±.1		APPD	SAS 04/24/2003
3	ADDED IEC NOTATIONS... (U1), (V1) ETC. MU95194	MSG 5/10/2010	MJS	.XX	±.02		SCALE	1=1
2	ADDED THE OPTIONAL CORD CONNECTION MU46318	RDH 04/24/2003	DRS	.XXX	±.005		REF	
1	REDRAWN	RM 11/20/1990		.XXXX	±.0005		FMF	
					±7'30"		PREV	
THIS DRAWING IN DESIGN AND DETAIL IS OUR PROPERTY AND MUST NOT BE USED EXCEPT IN CONNECTION WITH OUR WORK ALL RIGHTS OF DESIGN AND INVENTION ARE RESERVED THIS IS AN ELECTRONICALLY GENERATED DOCUMENT – DO NOT SCALE THIS PRINT					RFP	CAD FILE ee7308	SIZE A	DRAWING NO. EE7308
					DIST WP			PAGE OF 5



Regal Beloit America, Inc.

TITLE CONNECTION DIAGRAM
3Ø – DUAL VOLTAGE MOTOR