

# PRODUCT INFORMATION PACKET

Model No: 182TTDR4156

Catalog No: U426

Other Purpose Motor, 3 & 2 HP, 3 Ph, 60 & 50 Hz, 208-230/460 & 190/380 V, 1800 & 1500 RPM,  
182T Frame, DP



Regal and Marathon are trademarks of Regal Rexnord Corporation or one of its affiliated companies.

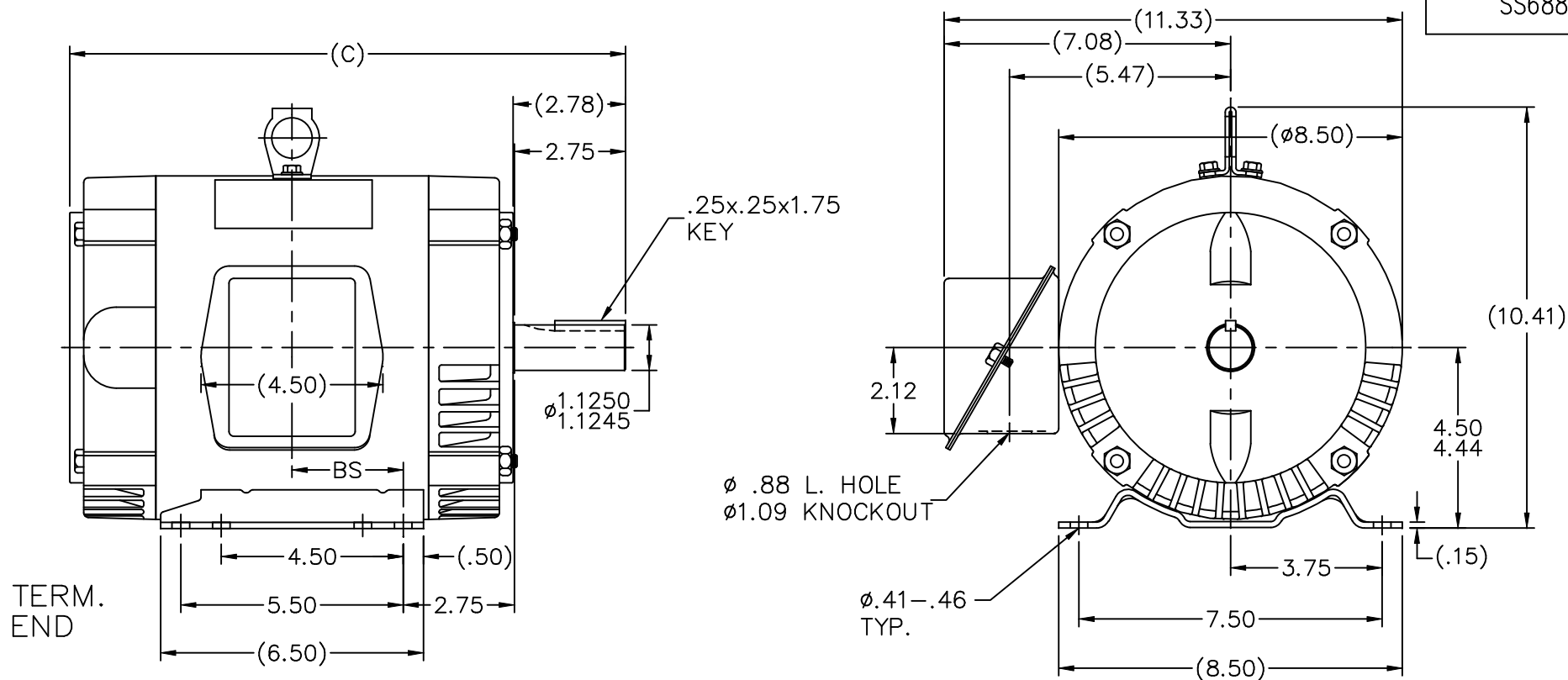
©2023 Regal Rexnord Corporation, All Rights Reserved. MC017097E

### Nameplate Specifications

Phase	<b>3</b>	Output HP	<b>3 &amp; 2 Hp</b>
Output KW	<b>2.2 &amp; 1.5 kW</b>	Voltage	<b>208-230/460 &amp; 190/380 V</b>
Speed	<b>1760 &amp; 1465 rpm</b>	Service Factor	<b>1.15 &amp; 1.15</b>
Frame	<b>182T</b>	Enclosure	<b>Drip Proof</b>
Thermal Protection	<b>Automatic</b>	Efficiency	<b>86.5 &amp; 85.5 %</b>
Ambient Temperature	<b>40 °C</b>	Frequency	<b>60 &amp; 50 Hz</b>
Current	<b>8.8-8.6/4.3 &amp; 8.2/4.1 A</b>	Power Factor	<b>77</b>
Duty	<b>Continuous</b>	Insulation Class	<b>B</b>
Design Code	<b>B</b>	KVA Code	<b>K</b>
Drive End Bearing Size	<b>6206</b>	Opp Drive End Bearing Size	<b>6203</b>
UL	<b>Recognized</b>	CSA	<b>Y</b>
CE	<b>Y</b>	IP Code	<b>22</b>
Number of Speeds	<b>1</b>		

### Technical Specifications

Electrical Type	<b>Squirrel Cage Induction Run</b>	Starting Method	<b>Across The Line</b>
Poles	<b>4</b>	Rotation	<b>Reversible</b>
Resistance Main	<b>5.25 Ohms</b>	Mounting	<b>Rigid Base</b>
Motor Orientation	<b>Horizontal</b>	Drive End Bearing	<b>Ball</b>
Opp Drive End Bearing	<b>Ball</b>	Frame Material	<b>Rolled Steel</b>
Shaft Type	<b>T</b>	Overall Length	<b>14.22 in</b>
Frame Length	<b>7.25 in</b>	Shaft Diameter	<b>1.125 in</b>
Shaft Extension	<b>2.75 in</b>	Assembly/Box Mounting	<b>F1 Only</b>
Connection Drawing	<b>A-EE7335</b>	Outline Drawing	<b>A-SS68856-725</b>



NOTES:

1. CONDUIT BOX CAN BE ROTATED IN 90° STEPS.
2. CONDUIT BOX CAN BE MOUNTED ON OPPOSITE SIDE BY REMOVING BRACKETS AND TURNING FRAME 180°.(AS NOTED)
3. NAMEPLATE TO BE READ FROM CONDUIT BOX SIDE OF MOTOR.

DASH	FR.	C	BS	MOUNTING	DASH	FR.	C	BS	MOUNTING
575	182T	12.72	2.25	F1 OR F2	725	182/4T	14.22	3.00	F1 ONLY
625	182T	13.22	2.50	F1 ONLY	775	182/4T	14.72	3.25	F1 ONLY
675	182T	13.72	2.75	F1 ONLY	825	182/4T	15.22	3.50	F1 ONLY
675	184T	13.72	2.75	F1 OR F2	875	182/4T	15.72	3.75	F1 ONLY

		TOLERANCES UNLESS SPECIFIED		MARATHON ELECTRIC		DRAWN DRS 10-14-1999
		DEC.	INCHES			CHK ML 10-14-1999
4	REDRAWN IN AUTOCAD	TAT 06-29-2004	ML .X	TITLE OUTLINE		APPD TB 10-14-1999
3	REVISED MOUNTINGS CN 27400-320	HLB 08-06-2001	.XX	180T FR. - BB - TS - DR.PR.		SCALE 1=4
2	ADDED LIFT LUG CN 34025	DRS 02-20-2001	.XXX	MAT'L.		REF
1	NEW DRAWING	DRS 10-14-1999	.XXXX	FINISH		FMF
NO.	REVISION	BY & DATE	CHK	ANG	FINISH	PREV
			RFP		CAD FILE ss68856	SIZE A
			DIST LB			DRAWING NO. SS68856
						PAGE OF 4
						REV. 4

THIS DRAWING IN DESIGN AND DETAIL IS OUR PROPERTY AND MUST NOT BE USED EXCEPT IN CONNECTION WITH OUR WORK ALL RIGHTS OF DESIGN AND INVENTION ARE RESERVED THIS IS AN ELECTRONICALLY GENERATED DOCUMENT - DO NOT SCALE THIS PRINT

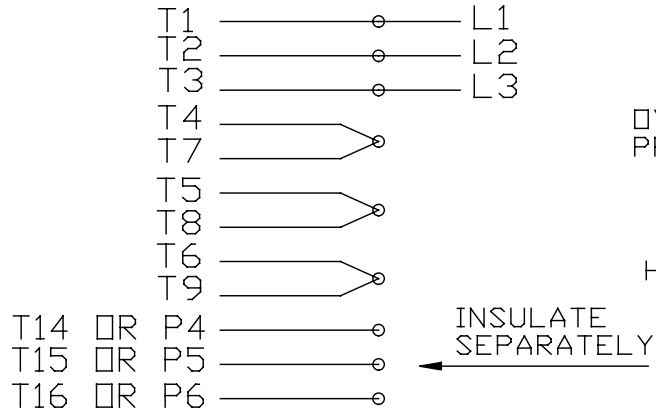
ERROR: syntaxerror  
OFFENDING COMMAND: --nostringval--

STACK:

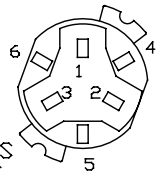
219  
/Uacute  
218  
/Ugrave  
217  
/Oslash  
216  
/multiply  
215  
/Odieresis  
214  
/Otilde  
213  
/Ocircumflex  
212  
/Oacute  
211  
/Ograve  
210  
/Ntilde  
209  
/Eth  
208  
/Idieresis  
207  
/Icircumflex  
206  
/Iacute  
205  
/Igrave  
204  
/Edieresis  
203  
/Ecircumflex  
202  
/Eacute  
201  
/Egrave  
200  
/Ccedilla  
199  
/AE  
198  
/Aring  
197  
/Adieresis  
196  
/Atilde  
195  
/Acircumflex  
194  
/Aacute  
193  
/Agrave  
192  
/questiondown  
191  
/threequarters  
190  
/onehalf  
189  
/onequarter  
188  
/guillemotright  
187  
/ordmasculine  
186  
/onesuperior

EE7335

### HIGH VOLTAGE CONNECTIONS

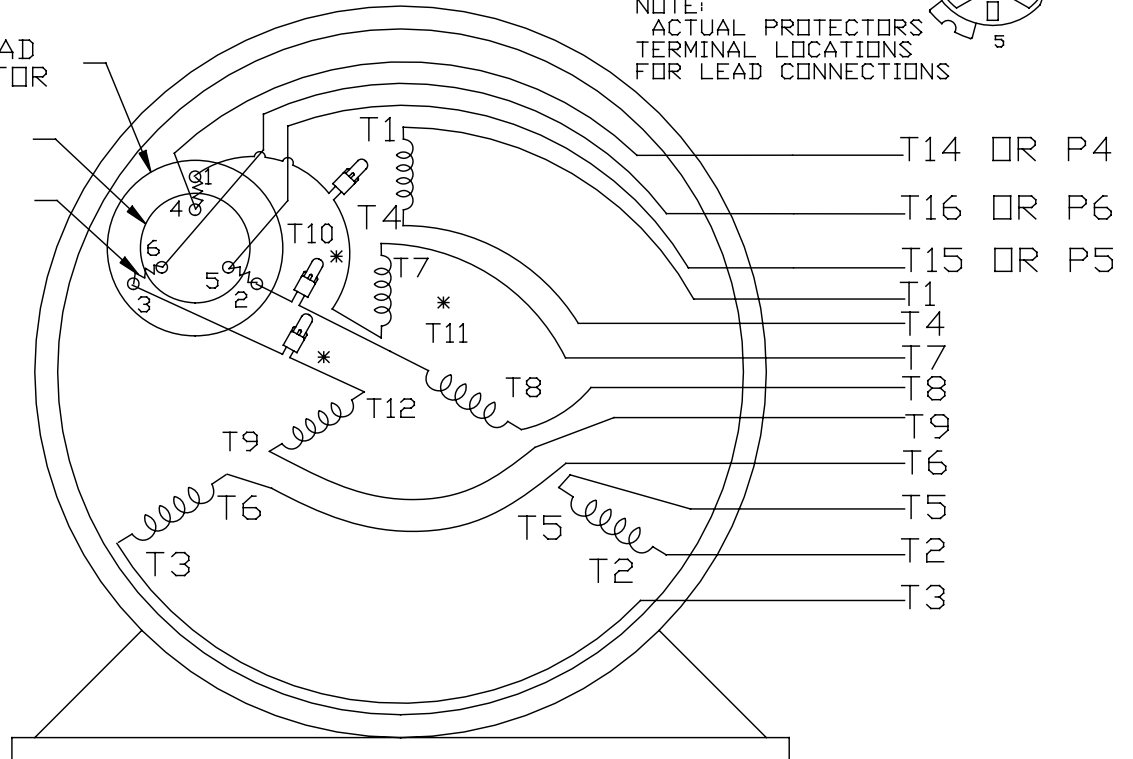


### THREE PHASE - DUAL VOLTAGE MOTOR WITH OVERLOAD PROTECTOR

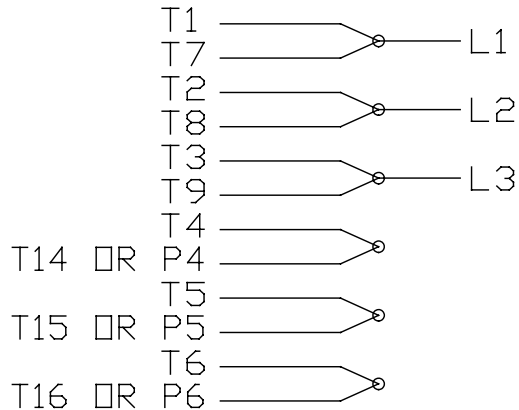


NOTE:  
ACTUAL PROTECTORS  
TERMINAL LOCATIONS  
FOR LEAD CONNECTIONS

OVERLOAD  
PROTECTOR  
DISC  
HEATER



### LOW VOLTAGE CONNECTIONS



VIEW OF TERMINAL END

\* USE PRESSURE CONNECTORS FOR MT2 PLANT ONLY

T2K
T4D
T6AN

NO.	REVISION	BY & DATE	CHK	TOLERANCES UNLESS SPECIFIED		FINISH	DRAWN	SCALE	REV.	
				DEC.	INCHES					
17	CHANGED LOGO FROM MARATHON TO REGAL	KIR 02/16/16	AB	DEC.	INCHES	<b>Regal Beloit America, Inc.</b>	KL	08-09-1993	1	
16	PRESSURE CONNECTORS QUANTITY WAS 6	PVR 10/29/13	GR	.X	±.1		CHK	ML	08/10/1993	2
15	PRESSURE CONNECTORS ADDED	GR 03/04/13	SR	.XX	±.01		APPD	GK	08/10/1993	3
14	ADDED ACTUAL PROECTOR VIEW CN 17481	KL 05/18/94		.XXX	±.005		TITLE			4
13	REDRAWN IN AUTO CAD	KL 08/11/93		.XXXX	±.0005		3Ø-DUAL VOLT WITH OVERLOAD PROTECTO			5
						MAT'L.			6	
									7	
									8	
									9	
									10	
									11	
									12	
									13	
									14	
									15	
									16	
									17	
									18	
									19	
									20	
									21	
									22	
									23	
									24	
									25	
									26	
									27	
									28	
									29	
									30	
									31	
									32	
									33	
									34	
									35	
									36	
									37	
									38	
									39	
									40	
									41	
									42	
									43	
									44	
									45	
									46	
									47	
									48	
									49	
									50	
									51	
									52	
									53	
									54	
									55	
									56	
									57	
									58	
									59	
									60	
									61	
									62	
									63	
									64	
									65	
									66	
									67	
									68	
									69	
									70	
									71	
									72	
									73	
									74	
									75	
									76	
									77	
									78	
									79	
									80	
									81	
									82	
									83	
									84	
									85	
									86	
									87	
									88	
									89	
									90	
									91	
									92	
									93	
									94	
									95	
									96	
									97	
									98	
									99	
									100	