

PRODUCT INFORMATION PACKET



Model No: 182TTDR4074

Catalog No: U425

3 HP, General Purpose Motors, 3 phase, 1800 RPM, 200-208 V, 182T Frame, DP
General Purpose Motors

Regal and Marathon are trademarks of Regal Rexnord Corporation or one of its affiliated companies.
©2021 Regal Rexnord Corporation, All Rights Reserved. MC017097E



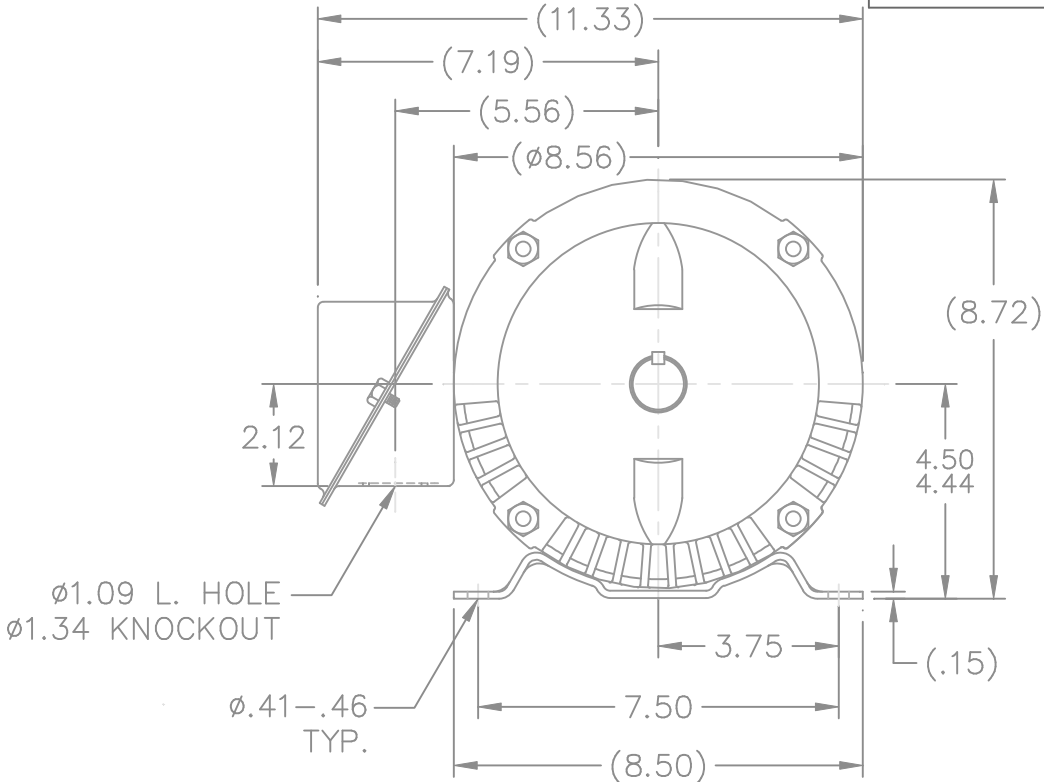
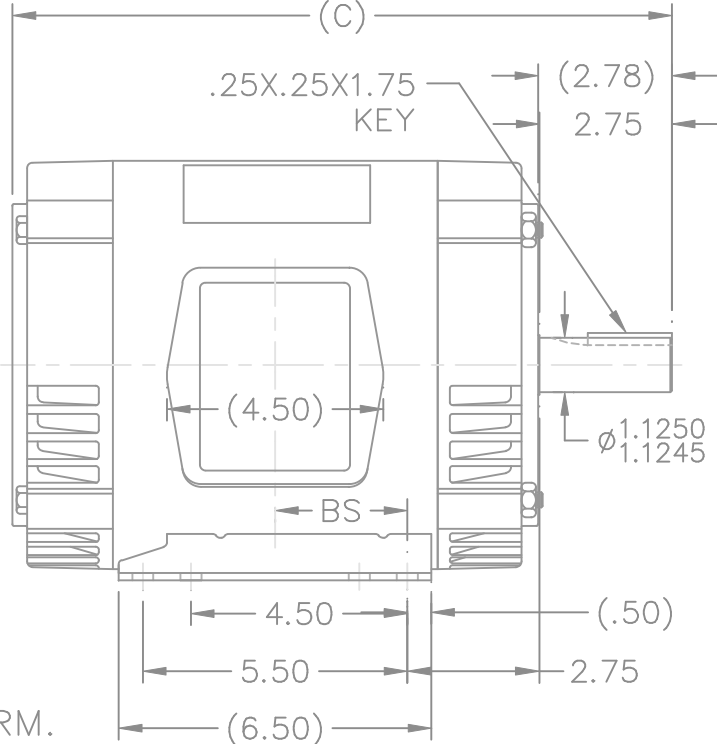
Nameplate Specifications

Output HP	3 Hp	Output KW	2.2 kW
Frequency	60 Hz	Voltage	200-208 V
Current	9.9-10.3 A	Speed	1765 rpm
Service Factor	1.15	Phase	3
Efficiency	86.5 %	Power Factor	71
Duty	Continuous	Insulation Class	B
Design Code	B	KVA Code	K
Frame	182T	Enclosure	Drip Proof
Thermal Protection	Automatic	Ambient Temperature	40 °C
Drive End Bearing Size	6206	Opp Drive End Bearing Size	6203
UL	Recognized	CSA	Y
CE	Y	IP Code	22
Number of Speeds	1		

Technical Specifications

Electrical Type	Squirrel Cage Induction Run	Starting Method	Across The Line
Poles	4	Rotation	Reversible
Resistance Main	1.02 Ohms	Mounting	Rigid Base
Motor Orientation	Horizontal	Drive End Bearing	Ball
Opp Drive End Bearing	Ball	Frame Material	Rolled Steel
Shaft Type	T	Overall Length	14.22 in
Frame Length	7.25 in	Shaft Diameter	1.125 in
Shaft Extension	2.75 in	Assembly/Box Mounting	F1 ONLY
Connection Drawing	A-EE7335A	Outline Drawing	A-SS69510-725


This is an uncontrolled document once printed or downloaded and is subject to change without notice. Date Created:11/30/2021



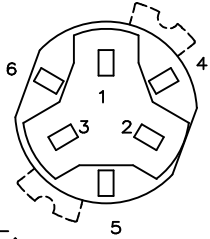
DASH	FR.	C	BS	MOUNTING
575	182T	12.72	2.25	F1 OR F2
625	182/4T	13.22	2.50	F1 OR F2
725	182/4T	14.22	3.00	F1 ONLY
775	182/4T	14.72	3.25	F1 ONLY
825	182/4T	15.22	3.50	F1 ONLY
875	182/4T	15.72	3.75	F1 ONLY

NOTES:

1. CONDUIT BOX CAN BE ROTATED IN 90° STEPS.
2. CONDUIT BOX CAN BE MOUNTED ON OPPOSITE SIDE BY REMOVING BRACKETS AND TURNING FRAME 180°. (AS NOTED)
3. NAMEPLATE TO BE READ FROM CONDUIT BOX SIDE OF MOTOR.

				TOLERANCES UNLESS SPECIFIED			DRAWN RWR 09-02-2004		
				DEC.	INCHES		CHK ML 09-02-2004		
				.X	±.1		APPD LC 09-03-2004		
				.XX	±.03		SCALE 1=4		
				.XXX	±.005	TITLE OUTLINE 180T FR. – BB – TS – DR. PR.	REF		
1	CHG C'BOX HOLE SIZES	RWR 09/22/2004	ML	.XXXX	±.0005	MAT'L.	FMF		
NO.	REVISION	BY & DATE	CHK	ANG	±7'30"	FINISH	PREV		
THIS DRAWING IN DESIGN AND DETAIL IS OUR PROPERTY AND MUST NOT BE USED EXCEPT IN CONNECTION WITH OUR WORK ALL RIGHTS OF DESIGN AND INVENTION ARE RESERVED THIS IS AN ELECTRONICALLY GENERATED DOCUMENT – DO NOT SCALE THIS PRINT			RFP		CAD FILE ss69510	SIZE	DRAWING NO.	PAGE 1 OF 1	REV.
			DIST LB			A	SS69510		1

SINGLE VOLTAGE – THREE PHASE WITH OVERLOAD PROTECTOR

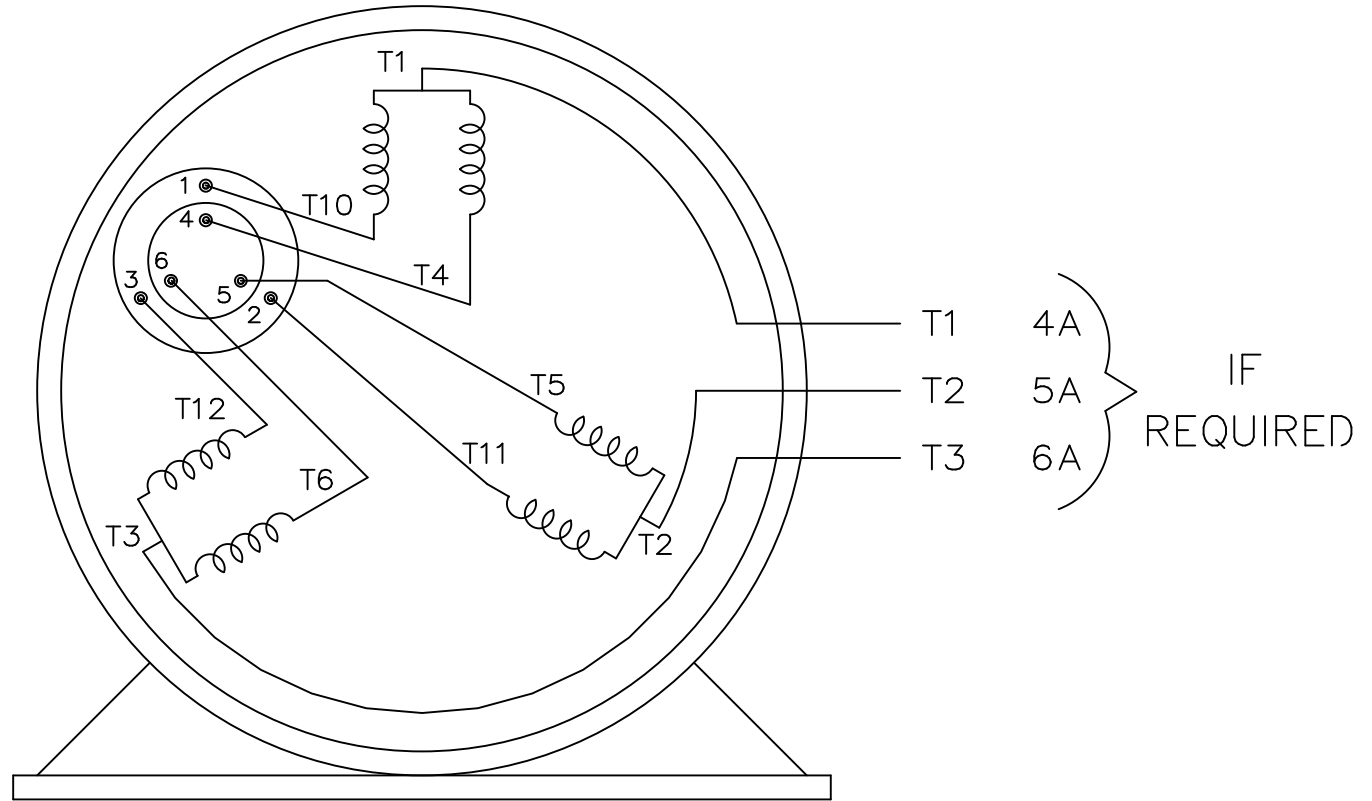


NOTE:
ACTUAL PROTECTORS
TERMINAL LOCATIONS
FOR LEAD CONNECTIONS

NOTE:


WEST PLAINS

LEADS WITH TERMINALS
SHOULD BE CONNECTED
TO INBOARD SIDE OF
TERMINAL BOARD.



TO REVERSE ROTATION:
INTERCHANGE ANY TWO LINE
LEAD CONNECTIONS.

VIEW OF TERMINAL END

				TOLERANCES UNLESS SPECIFIED		 MARATHON ELECTRIC	DRAWN DA 03-26-1993			
				DEC.	INCHES		CHK	ML	03-26-1993	
8	ADDED 4A, 5A & 6A "IF REQUIRED" MU80422	RJW 07-10-2007	ML	.X	± -	TITLE CONNECTION DIAGRAM SINGLE VOLT - 3ø W/OVERLOAD PROT.	APPD	GK	03-26-1993	
7	ADDED TERM. BOARD CONNECTION NOTE CN 19219	SMC 10-13-1994		.XX	± -		SCALE 1=1			
6	ADDED ACTUAL PROTECTOR VIEW CN 17481	KL 05-18-1994		.XXX	± -		REF			
5	REDRAWN - NO CHANGE	DA 03-29-1993		.XXXX	± -		FMF			
NO.	REVISION	BY & DATE	CHK	ANG	± -	FINISH	PREV			
THIS DRAWING IN DESIGN AND DETAIL IS OUR PROPERTY AND MUST NOT BE USED EXCEPT IN CONNECTION WITH OUR WORK ALL RIGHTS OF DESIGN AND INVENTION ARE RESERVED THIS IS AN ELECTRONICALLY GENERATED DOCUMENT - DO NOT SCALE THIS PRINT			RFP		CAD FILE ee7335a		SIZE	DRAWING NO.	PAGE OF	REV.
			DIST LB-WP				A	EE7335A		8