

# PRODUCT INFORMATION PACKET

**marathon®**  
Motors

Model No: 182TTDBD6035  
Catalog No: GT2110  
3,1800,DP,182TC,3/60/575  
Miscellaneous

Regal and Marathon are trademarks of Regal Rexnord Corporation or one of its affiliated companies.  
©2021 Regal Rexnord Corporation, All Rights Reserved. MC017097E

The logo for Regal Rexnord, featuring a stylized 'R' icon followed by the text 'RegalRexnord'.

**Nameplate Specifications**

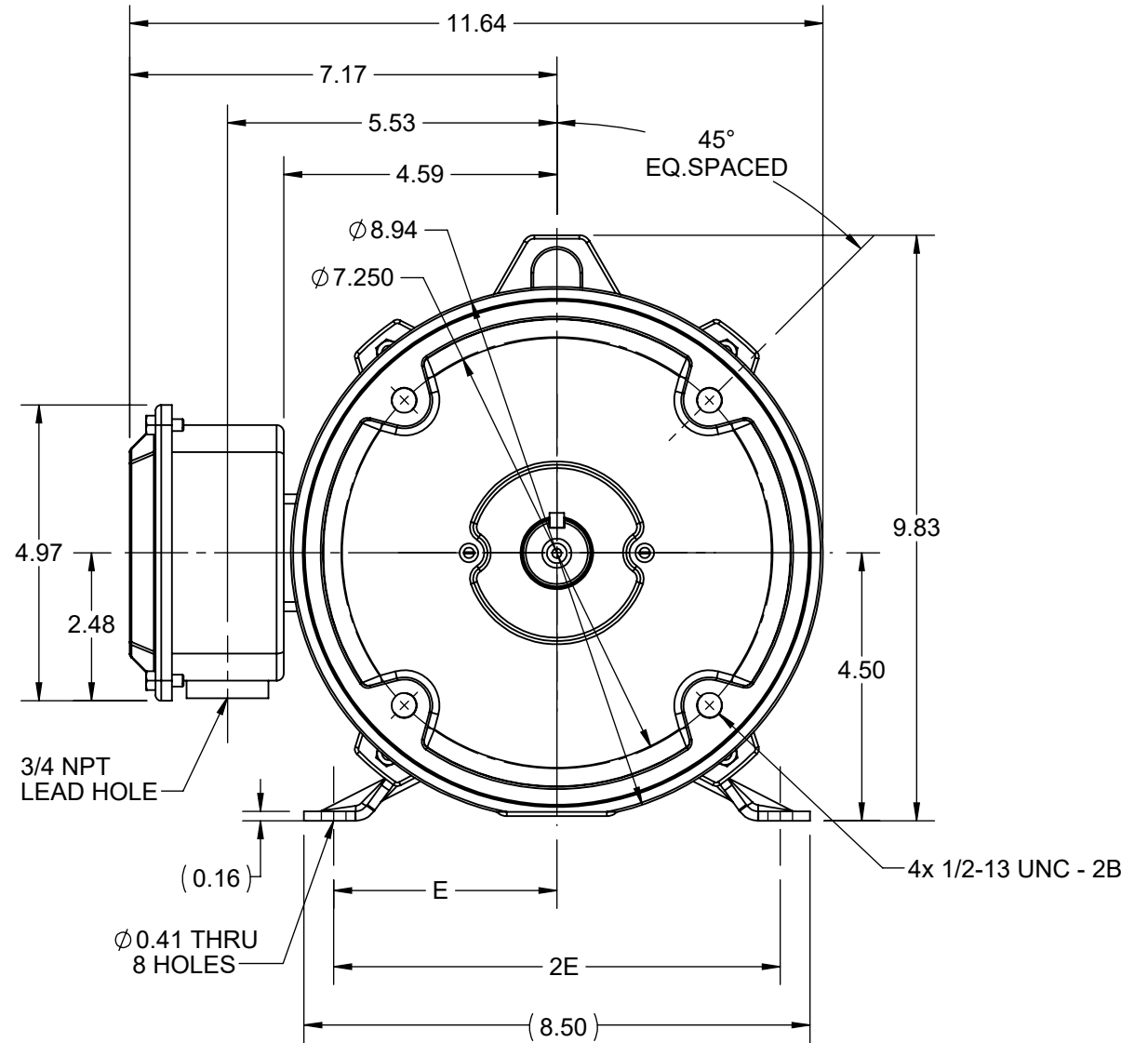
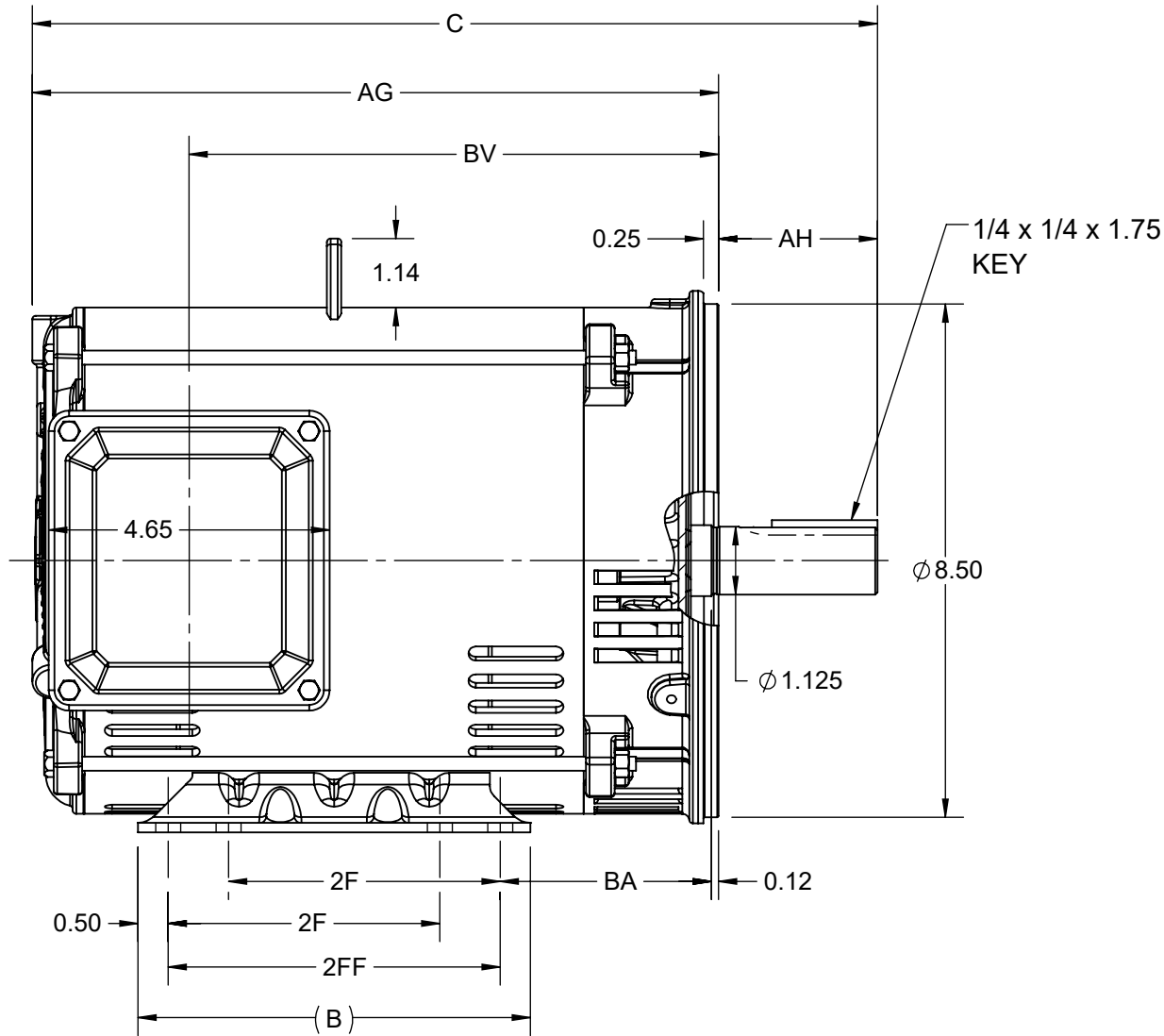
|                        |            |                            |            |
|------------------------|------------|----------------------------|------------|
| Output HP              | 3 Hp       | Output KW                  | 2.2 kW     |
| Frequency              | 60 Hz      | Voltage                    | 575 V      |
| Current                | 3.2 A      | Speed                      | 1770 rpm   |
| Service Factor         | 1.15       | Phase                      | 3          |
| Efficiency             | 89.5 %     | Power Factor               | 77.5       |
| Duty                   | Continuous | Insulation Class           | F          |
| Design Code            | A          | KVA Code                   | L          |
| Frame                  | 182TC      | Enclosure                  | Drip Proof |
| Thermal Protection     | No         | Ambient Temperature        | 40 °C      |
| Drive End Bearing Size | 6206       | Opp Drive End Bearing Size | 6203       |
| UL                     | Recognized | CSA                        | Y          |
| CE                     | Y          | IP Code                    | 22         |
| Number of Speeds       | 1          |                            |            |

**Technical Specifications**

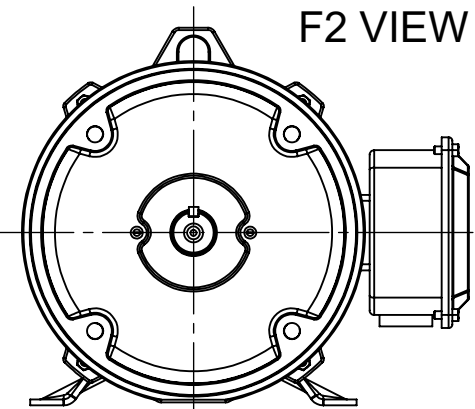
|                       |                              |                       |                  |
|-----------------------|------------------------------|-----------------------|------------------|
| Electrical Type       | Squirrel Cage Inverter Rated | Starting Method       | Line Or Inverter |
| Poles                 | 4                            | Rotation              | Reversible       |
| Resistance Main       | 4.12 Ohms                    | Mounting              | Rigid Base       |
| Motor Orientation     | Horizontal                   | Drive End Bearing     | Ball             |
| Opp Drive End Bearing | Ball                         | Frame Material        | Rolled Steel     |
| Shaft Type            | T                            | Assembly/Box Mounting | F1/F2 CAPABLE    |
| Outline Drawing       | SS600199-100                 | Connection Drawing    | EE7300           |

This is an uncontrolled document once printed or downloaded and is subject to change without notice. Date Created:10/11/2021

| 4        |      |       |      | 3    |      |      |       | 2    |      |      |          | 1     |
|----------|------|-------|------|------|------|------|-------|------|------|------|----------|-------|
| DASH NO. | B    | C     | E    | 2E   | 2F   | 2FF  | AG    | AH   | BA   | BV   | MOUNTING | FRAME |
| 100      | 6.50 | 13.00 | 3.75 | 7.50 | 4.50 | 5.50 | 10.37 | 2.62 | 3.50 | 7.77 | F1 OR F2 | 182TC |
| 200      |      | 14.00 |      |      |      |      | 11.37 |      |      | 8.77 |          | 184TC |


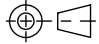


F2 VIEW



|   |                      |                               |
|---|----------------------|-------------------------------|
| DRAWING REVISION<br>B   | REVISION BY<br>BISWA | REV DATE/© DATE<br>19/01/2021 |
| ECO<br>CR-0000645   | APPROVED BY<br>GNK   | DATE<br>19/01/2021            |
| ECO DESCRIPTION<br>DRAWING UPDATED.<br>COPYRIGHT (PER REVISION DATE) REGAL BELOIT AMERICA, INC. ALL RIGHTS RESERVED. PROPRIETARY AND CONFIDENTIAL INFORMATION - THIS DOCUMENT IS THE PROPERTY OF REGAL BELOIT AMERICA, INC. ("OWNER") AND CONTAINS OWNER'S PROPRIETARY INFORMATION. ANY PERSON, CORPORATION OR OTHER FIRM RECEIVING IT IS DEEMED, BY RECEIVING IT, TO AGREE THAT IT, AND/OR ANY PART OF IT, SHALL NOT BE DISCLOSED TO ANY PERSON, CORPORATION OR OTHER ENTITY, DUPLICATED, AND/OR USED, EXCEPT AS EXPRESSLY APPROVED IN WRITING IN ADVANCE BY OWNER. THIS DOCUMENT SHALL BE RETURNED TO OWNER UPON REQUEST. IT MAY BE SUBJECT TO CERTAIN RESTRICTIONS UNDER APPLICABLE EXPORT CONTROL LAWS AND REGULATIONS. |                      |                               |

PRIMARY DIMENSIONS ARE INCH  
mm DIMENSIONS IN [BRACKETS]  
ARE FOR REFERENCE ONLY

|   |  |                            |                 |
|---|--|----------------------------|-----------------|
| DRAWN BY<br>PRIYA   |  Regal Beloit America, Inc. |                            |                 |
| DATE<br>12/03/2018  |  |                            |                 |
| APPROVED BY<br>SBD  | DESCRIPTION<br>OUTLINE<br>182/184TC FR ODP RS  |                            |                 |
| DATE<br>12/03/2018  |  |                            |                 |
| REFERENCE   | MATERIAL   | PROCESS/FINISH             |                 |
| THIRD ANGLE<br>PROJECTION  | SIZE<br>B  | DRAWING NUMBER<br>SS600199 | SHEET<br>1 OF 1 |

# THREE PHASE - SINGLE VOLTAGE MOTOR - CONDUIT BOX @ 'A'

TO REVERSE ROTATION:  
INTERCHANGE ANY TWO  
LINE LEAD CONNECTIONS.

## TERMINAL BLOCK WHEN SPECIFIED



### IF MOTOR HAS 6 LEADS



A-9806 DECAL

### OPTIONAL CORD CONNECTION



### VIEW OF TERMINAL END

|   |                    |                    |
|---|--------------------|--------------------|
| DRAWING REVISION<br>AB  | REVISION BY<br>JJB | DATE<br>06-27-2017 |
| ECO<br>ECO-0125361  | APPROVED BY<br>TB  | DATE<br>06-27-2017 |
| ECO DESCRIPTION<br>UPDATED TO CURRENT STANDARDS   |                    |                    |
| <small>COPYRIGHT REGAL BELOIT AMERICA, INC. ALL RIGHTS RESERVED.<br/>         PROPRIETARY AND CONFIDENTIAL INFORMATION - THIS DOCUMENT IS THE PROPERTY OF<br/>         REGAL BELOIT AMERICA, INC. ("OWNER") AND CONTAINS OWNER'S PROPRIETARY<br/>         INFORMATION. ANY PERSON, CORPORATION OR OTHER FIRM RECEIVING IT IS DEEMED,<br/>         BY RECEIVING IT, TO AGREE THAT IT, AND/OR ANY PART OF IT, SHALL NOT BE DISCLOSED<br/>         TO ANY PERSON, CORPORATION OR OTHER ENTITY, DUPLICATED, AND/OR USED, EXCEPT<br/>         AS EXPRESSLY APPROVED IN WRITING IN ADVANCE BY OWNER. THIS DOCUMENT SHALL<br/>         BE RETURNED TO OWNER UPON REQUEST. IT MAY BE SUBJECT TO CERTAIN<br/>         RESTRICTIONS UNDER APPLICABLE EXPORT CONTROL LAWS AND REGULATIONS.</small> |                    |                    |

|                           |
|---------------------------|
| DRAWN BY<br>DA            |
| DATE<br>03-26-1993        |
| APPROVED BY<br>TB         |
| DATE<br>03-26-1993        |
| REFERENCE                 |
| THIRD ANGLE<br>PROJECTION |



Regal Beloit America, Inc.

DESCRIPTION  
**CONNECTION DIAGRAM**  
EXTERNAL - SINGLE VOLTAGE - 3Ø MOTOR

MATERIAL PROCESS/FINISH

|           |                          |                 |
|-----------|--------------------------|-----------------|
| SIZE<br>A | DRAWING NUMBER<br>EE7300 | SHEET<br>1 OF 1 |
|-----------|--------------------------|-----------------|