

PRODUCT INFORMATION PACKET



Model No: 182TTDB7355

Catalog No: M313

Close-Coupled Pump Motor, 3 & 2 HP, 3 Ph, 60 & 50 Hz, 208-230/460 & 190/380 V, 1800 & 1500 RPM,
182JM Frame, DP

Regal and Marathon are trademarks of Regal Rexnord Corporation or one of its affiliated companies.

©2023 Regal Rexnord Corporation, All Rights Reserved. MC017097E



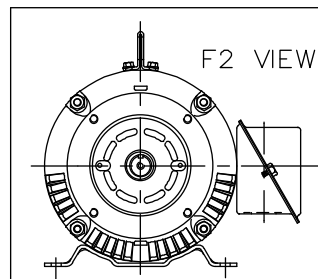
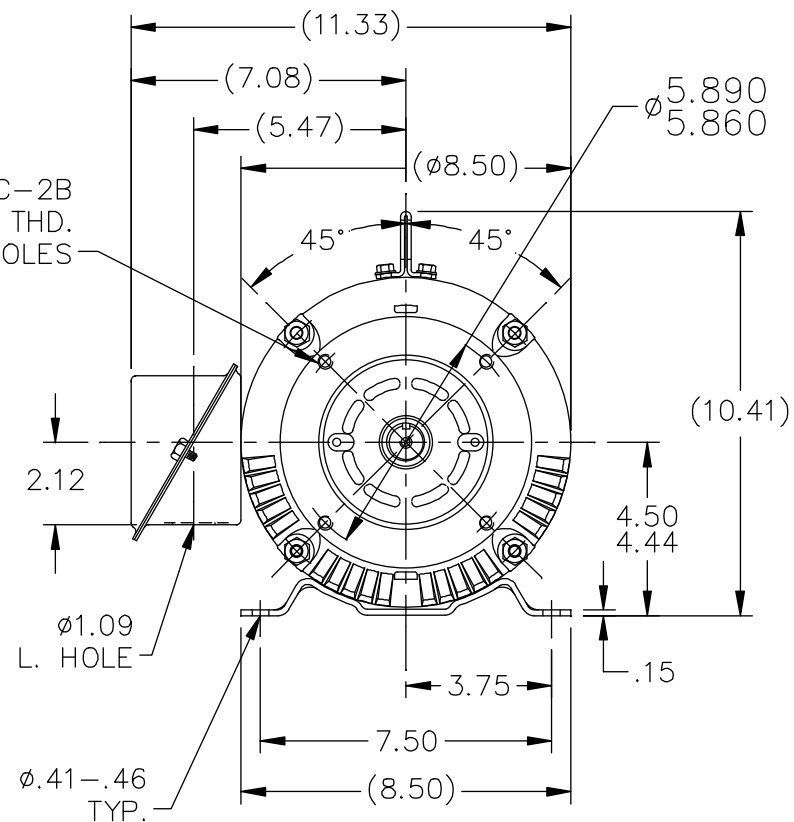
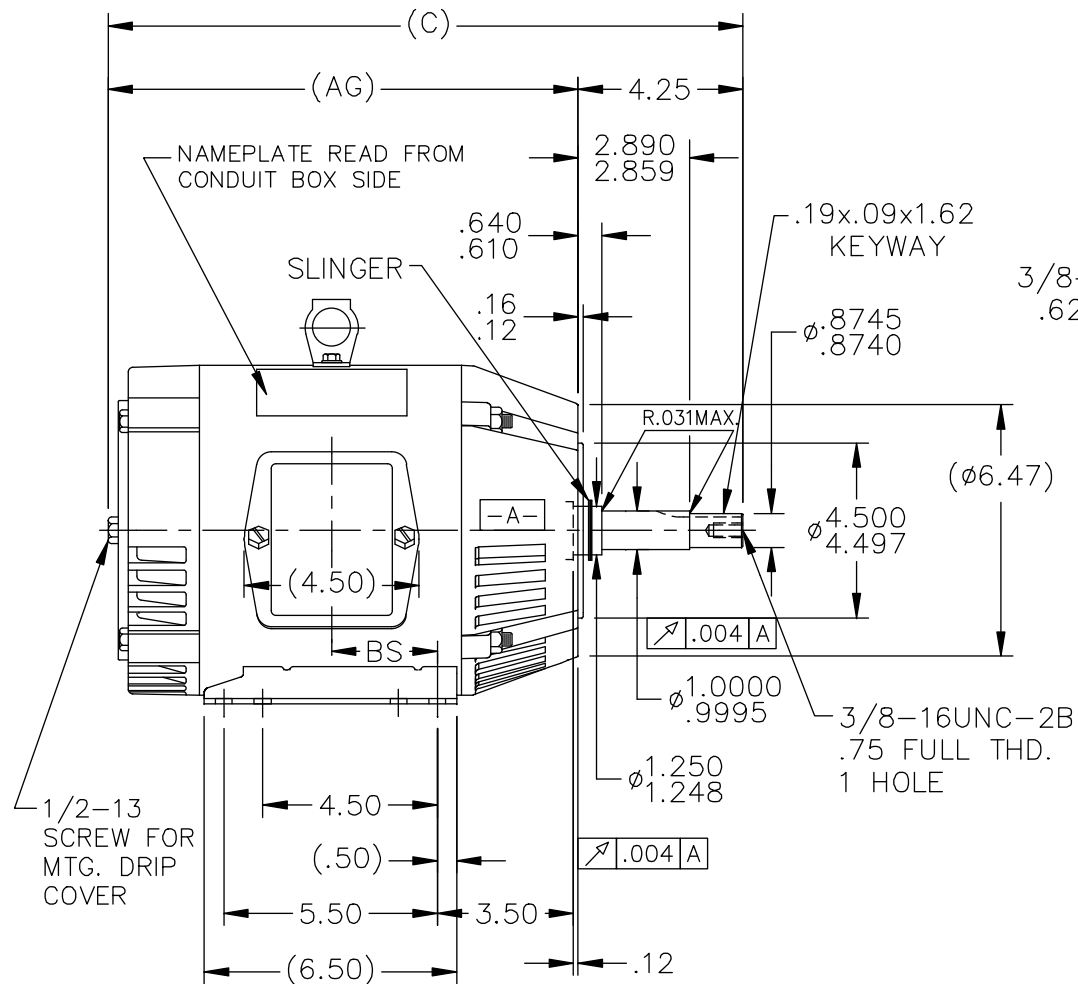
Nameplate Specifications

Phase	3	Output HP	3 & 2 Hp
Output KW	2.2 & 1.5 kW	Voltage	208-230/460 & 190/380 V
Speed	1730 & 1450 rpm	Service Factor	1.15 & 1.15
Frame	182JM	Enclosure	Drip Proof
Thermal Protection	No Protection	Efficiency	81.5 & 82.5 %
Ambient Temperature	40 °C	Frequency	60 & 50 Hz
Current	9.2-9/4.5 & 7.2/3.6 A	Power Factor	77.7
Duty	Continuous	Insulation Class	F
Design Code	B	KVA Code	J
Drive End Bearing Size	6307	Opp Drive End Bearing Size	6205
UL	Recognized	CSA	Y
CE	Y	IP Code	22
Number of Speeds	1		

Technical Specifications

Electrical Type	Squirrel Cage Induction Run	Starting Method	Across The Line
Poles	4	Rotation	Reversible
Resistance Main	7.2 Ohms	Mounting	Rigid Base
Motor Orientation	Horizontal	Drive End Bearing	Ball
Opp Drive End Bearing	Ball	Frame Material	Rolled Steel
Shaft Type	JM	Overall Length	15.35 in
Frame Length	5.75 in	Shaft Diameter	0.875 in
Shaft Extension	4.28 in	Assembly/Box Mounting	F1/F2 CAPABLE
Connection Drawing	A-EE7308	Outline Drawing	A-SS65051-575

SS65051



DASH	FR.	C	AG	BS	MOUNTING
575	182JM	15.35	11.10	2.25	F1 OR F2
675	182/84JM	16.35	12.10	2.75	F1 OR F2
775	182/84JM	17.35	13.10	3.25	F1 ONLY

BOX CAN BE ROTATED IN 90° STEPS.
BOX CAN BE MOUNTED ON OPPOSITE
SIDE BY REMOVING BRACKETS AND
TURNING FRAME 180°.

18	UPDATED DRAWING	RJW 04-20-2007		TOLERANCES UNLESS SPECIFIED	
17	-675 & 775 NOW 182/84JM FRAMES CN 31857	DRS 11-01-2002	ML	DEC.	INCHES
16	ADDED FORMED LIFT LUG CN 34025	HLB 06-29-2001		.X	±.1
15	ADDED MOUNTING TYPE CN 27451	DRS 04-29-1999		.XX	±.03
14	REMOVED EYEBOLT	BLR 11-09-1995		.XXX	±.005
13	ADDED NEW BASE CN 14442	RM 06-24-1994		.XXXX	±.0005
NO.	REVISION	BY & DATE	CHK	ANG	±7'30"



TITLE	OUTLINE
180T FR. - BB - TS - DR.PR. - C'FACE	

	MAT'L.
--	--------

FINISH

DRAWN DJK 12-15-1992

CHK	ML 12-16-1992
-----	---------------

APPD GK 12-16-1992

SCALE	1=5
-------	-----

REF

FMF	
-----	--

PREV

THIS DRAWING IN DESIGN AND DETAIL IS OUR PROPERTY AND MUST NOT BE USED EXCEPT
IN CONNECTION WITH OUR WORK ALL RIGHTS OF DESIGN AND INVENTION ARE RESERVED
THIS IS AN ELECTRONICALLY GENERATED DOCUMENT – DO NOT SCALE THIS PRINT

	RFP
--	-----

DIST	LB
------	----

CAD FILE	ss65051
----------	---------

SIZE
A

DRAWING NO.	PAGE	OF
SS65051		

REV.
18



				TOLERANCES UNLESS SPECIFIED		 Regal Beloit America, Inc.	DRAWN RM 11/20/1990				
5	CHG TO REGAL LOGO	SL 09/10/2015	AB	DEC.	INCHES		CHK ML 11/21/1990				
4	REVISED IEC NOTATIONS	MSG 11/15/2011	CMN	.X	±.1		APPD SAS 04/24/2003				
3	ADDED IEC NOTATIONS... (U1), (V1) ETC. MU95194	MSG 5/10/2010	MJS	.XX	±.02		SCALE 1=1				
2	ADDED THE OPTIONAL CORD CONNECTION MU46318	RDH 04/24/2003	DRS	.XXX	±.005	TITLE CONNECTION DIAGRAM 3ø – DUAL VOLTAGE MOTOR	REF				
1	REDRAWN	RM 11/20/1990		.XXXX	±.0005	MAT'L	FMF				
NO.	REVISION	BY & DATE	CHK	ANG	±7"30"	FINISH	PREV				
THIS DRAWING IN DESIGN AND DETAIL IS OUR PROPERTY AND MUST NOT BE USED EXCEPT IN CONNECTION WITH OUR WORK ALL RIGHTS OF DESIGN AND INVENTION ARE RESERVED THIS IS AN ELECTRONICALLY GENERATED DOCUMENT – DO NOT SCALE THIS PRINT			RFP		CAD FILE ee7308		SIZE	DRAWING NO.	PAGE	OF	REV.
			DIST WP				A	EE7308			5