

PRODUCT INFORMATION PACKET

marathon®
Motors

Model No: 182TTDB6033

Catalog No: GT0510

3 HP Close-Coupled Pump Motor, 3 phase, 1800 RPM, 575 V, 182JM Frame, ODP
Close-Coupled Pump Motors



Regal and Marathon are trademarks of Regal Rexnord Corporation or one of its affiliated companies.
©2021 Regal Rexnord Corporation, All Rights Reserved. MC017097E

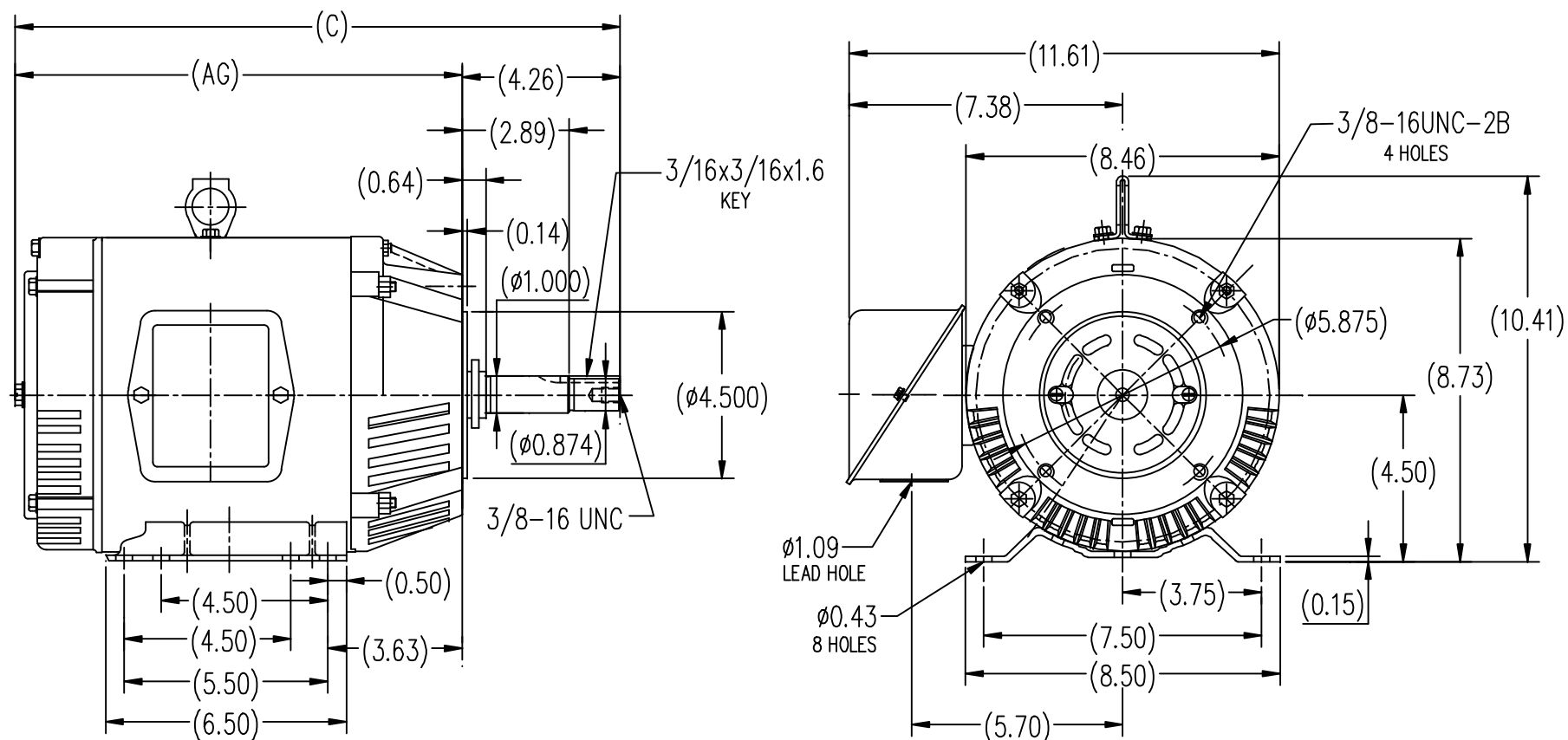
RegalRexnord

Nameplate Specifications

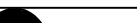
Output HP	3 Hp	Output KW	2.2 kW
Frequency	60 Hz	Voltage	575 V
Current	3.1 A	Speed	1750 rpm
Service Factor	1.15	Phase	3
Efficiency	89.5 %	Power Factor	81
Duty	Continuous	Insulation Class	F
Design Code	B	KVA Code	K
Frame	182JM	Enclosure	Drip Proof
Thermal Protection	No	Ambient Temperature	40 °C
Drive End Bearing Size	6307	Opp Drive End Bearing Size	6205
UL	Recognized	CSA	Y
CE	Y	IP Code	22
Number of Speeds	1		

Technical Specifications

Electrical Type	Squirrel Cage Inverter Rated	Starting Method	Line Or Inverter
Poles	4	Rotation	Reversible
Resistance Main	3.38 Ohms	Mounting	Rigid Base
Motor Orientation	Horizontal	Drive End Bearing	Ball
Opp Drive End Bearing	Ball	Frame Material	Rolled Steel
Shaft Type	JM	Overall Length	16.34 in
Frame Length	6.73 in	Shaft Diameter	0.875 in
Shaft Extension	4.26 in	Assembly/Box Mounting	F1 ONLY
Connection Drawing	EE7300	Outline Drawing	SS620311-182T



182T	12.09	16.34
184T	13.11	17.37
FRAME	AG	C

						 REGAL-BELOIT CORPORATION		DRAWN ZYH 6-9-2010	
					DEC.	INCHES		CHK	HZJ 6-9-2010
					.X	±.1	TITLE OUTLINE 182/184T FR-JM-ROLLED STEEL	APPD	CL 6-9-2010
					.XX	±.03		SCALE	1=4
					.XXX	±.005		REF	
1	CORRECT THE ID FOR AG & C DIM WAS B1 & B		MOD1-09-2012	.XXXX	±.0005	MAT'L		FMF	HWADA
NO.	REVISION		BY & DATE	CHK	ANG	±1/2-	FINISH	PREV	
THIS DRAWING IN DESIGN AND DETAIL IS OUR PROPERTY AND MUST NOT BE USED EXCEPT IN CONNECTION WITH OUR WORK ALL RIGHTS OF DESIGN AND INVENTION ARE RESERVED THIS IS AN ELECTRONICALLY GENERATED DOCUMENT - DO NOT SCALE THIS PRINT.							RFP	CAD FILE	SS620311
							DIST	SIZE B	DRAWING NO. SS620311
									REV 1

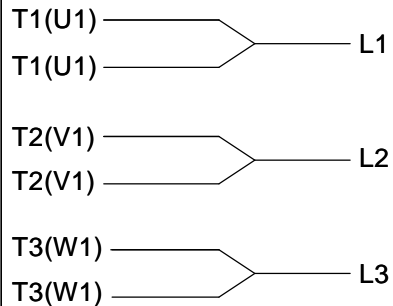
THREE PHASE - SINGLE VOLTAGE
MOTOR - CONDUIT BOX @ 'A'

TO REVERSE ROTATION:
INTERCHANGE ANY TWO
LINE LEAD CONNECTIONS.

TERMINAL BLOCK WHEN SPECIFIED



IF MOTOR HAS
6 LEADS



A-9806 DECAL

OPTIONAL CORD
CONNECTION



VIEW OF TERMINAL END

DRAWING REVISION AB	REVISION BY JJB	DATE 06-27-2017
ECO ECO-0125361	APPROVED BY TB	DATE 06-27-2017
ECO DESCRIPTION UPDATED TO CURRENT STANDARDS		
<small>COPYRIGHT REGAL BELOIT AMERICA, INC. ALL RIGHTS RESERVED. PROPRIETARY AND CONFIDENTIAL INFORMATION - THIS DOCUMENT IS THE PROPERTY OF REGAL BELOIT AMERICA, INC. ("OWNER") AND CONTAINS OWNER'S PROPRIETARY INFORMATION. ANY PERSON, CORPORATION OR OTHER FIRM RECEIVING IT IS DEEMED, BY RECEIVING IT, TO AGREE THAT IT, AND/OR ANY PART OF IT, SHALL NOT BE DISCLOSED TO ANY PERSON, CORPORATION OR OTHER ENTITY, DUPLICATED, AND/OR USED, EXCEPT AS EXPRESSLY APPROVED IN WRITING IN ADVANCE BY OWNER. THIS DOCUMENT SHALL BE RETURNED TO OWNER UPON REQUEST. IT MAY BE SUBJECT TO CERTAIN RESTRICTIONS UNDER APPLICABLE EXPORT CONTROL LAWS AND REGULATIONS.</small>		

DRAWN BY DA
DATE 03-26-1993
APPROVED BY TB
DATE 03-26-1993
REFERENCE
THIRD ANGLE PROJECTION



Regal Beloit America, Inc.

DESCRIPTION
CONNECTION DIAGRAM
EXTERNAL - SINGLE VOLTAGE - 3Ø MOTOR

MATERIAL PROCESS/FINISH

SIZE A	DRAWING NUMBER EE7300	SHEET 1 OF 1
-----------	--------------------------	-----------------

CERTIFICATION DATA SHEET

Model#: 182TTDB6033 AA
 CONN. DIAGRAM: A-EE7300
 OUTLINE: B-SS620311

WINDING#: CHT18240008 NONE 3
 ASSEMBLY: F1/F2 CAPABLE

TYPICAL MOTOR PERFORMANCE DATA

HP	KW	SYNC. RPM	F.L. RPM	FRAME	ENCLOSURE	KVA CODE	DESIGN
3	2.24	1800	1760	182JM	DP	L	B

PH	Hz	VOLTS	FL AMPS	START TYPE	DUTY	INSL	S.F	AMB°C	ELEVATION
3	60	575	3.05	LINE OR INVERTER	CONTINUOU S	F7	1.15	40	3300

FULL LOAD EFF: 90.2	3/4 LOAD EFF: 90.2	1/2 LOAD EFF: 89.5	GTD. EFF	ELEC. TYPE	NO LOAD AMPS
FULL LOAD PF: 81.5	3/4 LOAD PF: 75.5	1/2 LOAD PF: 63.5	88.5	SQ CAGE INV RATED	1.4

F.L. TORQUE	LOCKED ROTOR AMPS	L.R. TORQUE	B.D. TORQUE	F.L. RISE°C
9 LB-FT	28	25 LB-FT 277	37 LB-FT 411	35

SOUND PRESSURE @ 3 FT.	SOUND POWER	ROTOR WK^2	MAX. WK^2	SAFE STALL TIME	STARTS /HOUR	APPROX. MOTOR WGT
67 dBA	77 dBA	0.4 LB-FT^2	20 LB-FT^2	20 SEC.	2	80 LBS.

*** SUPPLEMENTAL INFORMATION ***

DE BRACKET TYPE	ODE BRACKET TYPE	MOUNT TYPE	ORIENTATION	SEVERE DUTY	HAZARDOUS LOCATION	DRIP COVER	SCREENS	PAINT
C-FACE	STANDARD	RIGID	HORIZONTAL	FALSE	NONE	FALSE	NONE	BLUE (ENAMEL)

BEARINGS		GREASE	SHAFT TYPE	SPECIAL DE	SPECIAL ODE	SHAFT MATERIAL	FRAME MATERIAL
DE	OPE						
BALL	BALL						
6307	6205	POLYREX EM	JM	NONE	NONE	1045 HOT ROLLED (C-204)	ROLLED STEEL

THERMO-PROTECTORS				THERMISTORS	CONTROL	SPACE /n HEATERS
THERMOSTATS	PROTECTORS	WDG RTDs	BRG RTDs			
NONE	NOT	NONE	NONE	NONE	FALSE	NONE VOLTS

If Inverter equals NONE, contact factory for further information

INVERTER TORQUE: VARIABLE 10:1
 INV. HP SPEED RANGE: NONE

ENCODER: NONE
 NONE NONE
 NONE NONE PPR

BRAKE: NONE NONE
 NONE P/N NONE
 NONE NONE
 NONE FT-LB NONE V NONE Hz

*
N
O
T
E
S
*

DATE: 06/27/2017 01:30:44 AM
 FORM 3531 REV.3 02/07/99
 ** Subject to change without notice.

Data Sheet

Date: 6/29/2017

Customer: _____

Attention: _____

Submitted by: FAREEDA DUDEKULA



182TTDB6033

Submittal

Data @ 575 V

Motor Load Data

Load	0%	25%	50%	75%	100%	115%	125%	LR	
Current (Amps)	1.44	1.60	2.00	2.48	3.1	3.4	3.7	28.0	
Torque (ft-lb)	0.00	2.20	4.4	6.7	9.0	10.3	11.3	25.0	
RPM	1800	1790	1780	1770	1750	1,745	1740	0	
Efficiency (%)		84.0	89.5	90.2	89.5	89.5	89.5		
P.F. (%)	6.5	42.0	63.5	75.5	81.0	83.0	84.5	53.5	

Motor Speed Data

	LR	Pull-Up	BD	Rated	Idle																													
Speed (RPM)	0	750	1360	1750	1800	Information Block																												
Current (Amps)	28.0	25.2	19.2	3.1	1.44	HP	3.0																											
Torque (ft-lb)	25.0	22.5	37.0	9.0	0.00	Sync. RPM	1800																											
<div><div>Efficiency (%)</div><div>P.F. (%)</div><div>Current (Amps)</div></div> <table><caption>Graph Data Points (Estimated)</caption><thead><tr><th>Load (%)</th><th>Efficiency (%)</th><th>P.F. (%)</th><th>Current (Amps)</th></tr></thead><tbody><tr><td>25</td><td>84</td><td>42</td><td>1.5</td></tr><tr><td>50</td><td>89</td><td>65</td><td>2.2</td></tr><tr><td>75</td><td>90</td><td>78</td><td>2.8</td></tr><tr><td>100</td><td>89</td><td>82</td><td>3.4</td></tr><tr><td>125</td><td>89</td><td>85</td><td>3.7</td></tr></tbody></table>						Load (%)	Efficiency (%)	P.F. (%)	Current (Amps)	25	84	42	1.5	50	89	65	2.2	75	90	78	2.8	100	89	82	3.4	125	89	85	3.7	Frame	182			
						Load (%)	Efficiency (%)	P.F. (%)	Current (Amps)																									
						25	84	42	1.5																									
						50	89	65	2.2																									
						75	90	78	2.8																									
						100	89	82	3.4																									
						125	89	85	3.7																									
						Enclosure	DP																											
						Construction	TDB																											
						Voltage	575 V																											
						Frequency	60 Hz																											
						Design	A																											
						LR Code letter	K																											
						Service Factor	1.15																											
						Temp Rise @ FL	35 ° C																											
						Duty	CONT																											
						Ambient	40 ° C																											
Elevation	1,000 feet																																	
Rotor/Shaft wk²	0.40 Lb-Ft²																																	
Ref Wdg	CHT18240008 NONE																																	
Sound Pressure @ 1M	67 dBA																																	
VFD Rating	VARIABLE 10:1																																	
Outline Dwg	B-SS620311																																	
Conn. Diag	A-EE7300																																	
Additional Specifications:																																		
0																																		
0																																		
EQUIV CKT (OHMS / PHASE)																																		
R1		R2		X1		X2		Xm																										
3.1040		3.4000		8.4250		8.4250		221.7190																										

Speed -Torque Curve

