

PRODUCT INFORMATION PACKET

marathon®
Motors

Model No: 182TTDB6007

Catalog No: GT0412

Globetrotter® Close-Coupled Pump Motor, 5 & 3 HP, 3 Ph, 60 & 50 Hz, 230/460 & 190/380 V,
3600 & 3000 RPM, 182JM Frame, DP



Regal and Marathon are trademarks of Regal Rexnord Corporation or one of its affiliated companies.

©2023 Regal Rexnord Corporation, All Rights Reserved. MC017097E

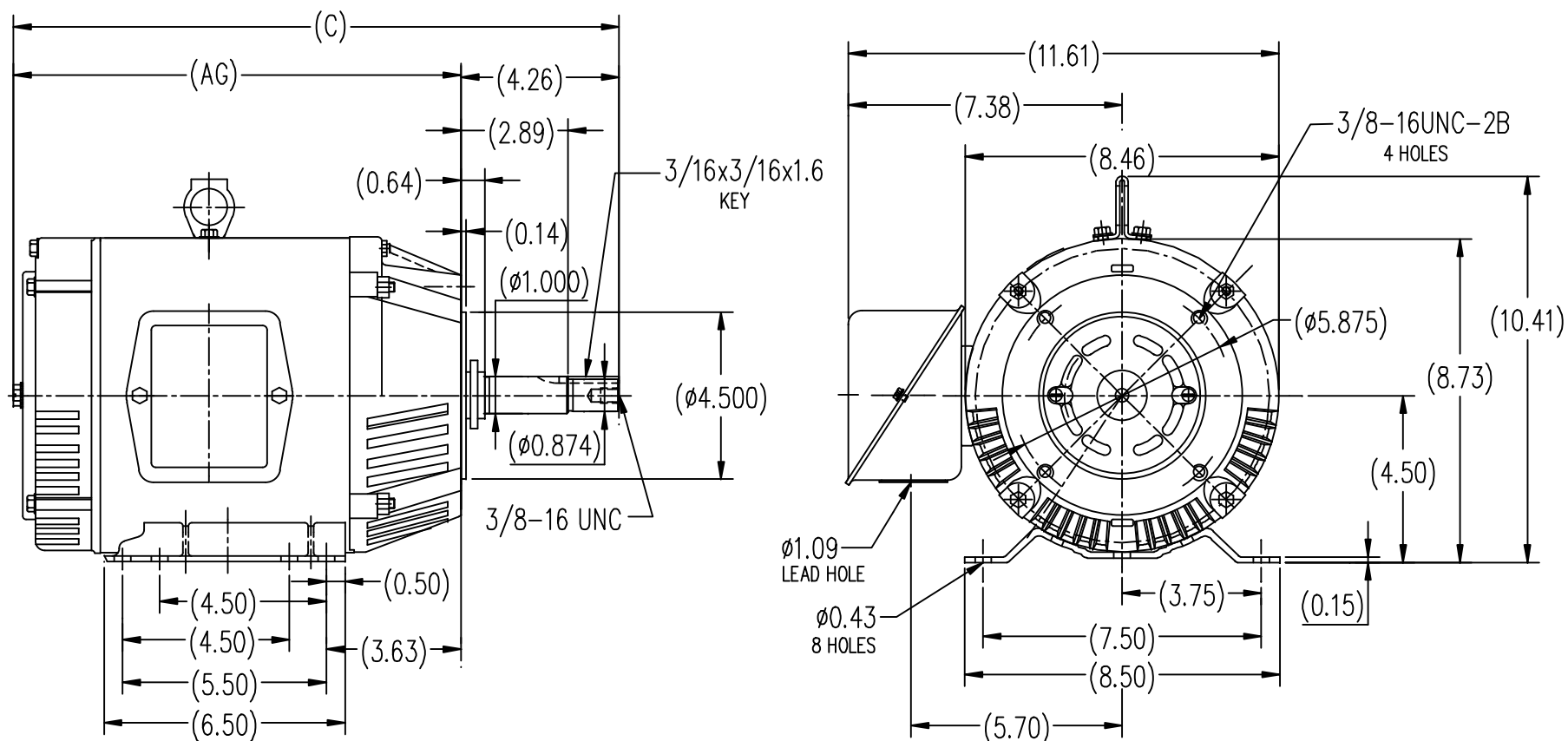
RegalRexnord

Nameplate Specifications


Phase	3	Output HP	5 & 3 Hp
Output KW	3.7 & 2.2 kW	Voltage	230/460 & 190/380 V
Speed	3495 & 2915 rpm	Service Factor	1.15 & 1.0
Frame	182JM	Enclosure	Drip Proof
Thermal Protection	No Protection	Efficiency	86.5 & 85.5 %
Ambient Temperature	40 °C	Frequency	60 & 50 Hz
Current	11.8/5.9 & 9/4.5 A	Power Factor	90
Duty	Continuous	Insulation Class	F
Design Code	B	KVA Code	H
Drive End Bearing Size	6307	Opp Drive End Bearing Size	6205
UL	Recognized	CSA	Y
CE	Y	IP Code	22
Number of Speeds	1		

Technical Specifications

Electrical Type	Squirrel Cage Inverter Rated	Starting Method	Line Or Inverter
Poles	2	Rotation	Reversible
Resistance Main	3.05 Ohms	Mounting	Rigid Base
Motor Orientation	Horizontal	Drive End Bearing	Ball
Opp Drive End Bearing	Ball	Frame Material	Rolled Steel
Shaft Type	JM	Overall Length	16.34 in
Frame Length	6.73 in	Shaft Diameter	0.875 in
Shaft Extension	4.26 in	Assembly/Box Mounting	F1 ONLY
Connection Drawing	A-EE7308	Outline Drawing	SS620311-182T



182T	12.09	16.34
184T	13.11	17.37
FRAME	AG	C

			TOLERANCES UNLESS SPECIFIED		 REGAL-BELOIT CORPORATION	DRAWN ZYH 6-9-2010	
DEC.	INCHES		.X	±.1		CHK HZJ 6-9-2010	
			.XX	±.03	TITLE	APPD CL 6-9-2010	
			.XXX	±.005	OUTLINE	SCALE 1=4	
			.XXXX	±.0005	182/184T FR-JM-ROLLED STEEL	REF	
1	CORRECT THE ID FOR AG & C DIM WAS B1 & B	MOD1-09-2012	.XXX	±.0005	MAT'L	FMF HWADA	
NO.	REVISION	BY & DATE	CHK	ANG	FINISH	PREV	
THIS DRAWING IN DESIGN AND DETAIL IS OUR PROPERTY AND MUST NOT BE USED EXCEPT IN CONNECTION WITH OUR WORK ALL RIGHTS OF DESIGN AND INVENTION ARE RESERVED THIS IS AN ELECTRONICALLY GENERATED DOCUMENT - DO NOT SCALE THIS PRINT			RFP	ANG	CAD FILE	SS620311	SIZE B
			DIST	ANG	SS620311	SS620311	DRAWING NO. SS620311
							REV. 1



NO.	REVISION	BY & DATE	CHK	ANG	TOLERANCES UNLESS SPECIFIED	FINISH	DRAWN RM	ML	SAS	SCALE	REF	FMF	PREV
5	CHG TO REGAL LOGO	SL 09/10/2015	AB	DEC.	INCHES								
4	REVISED IEC NOTATIONS	MSG 11/15/2011	CMN	.X	±.1								
3	ADDED IEC NOTATIONS... (U1), (V1) ETC. MU95194	MSG 5/10/2010	MJS	.XX	±.02								
2	ADDED THE OPTIONAL CORD CONNECTION MU46318	RDH 04/24/2003	DRS	.XXX	±.005								
1	REDRAWN	RM 11/20/1990		.XXXX	±.0005								
					±7'30"								
THIS DRAWING IN DESIGN AND DETAIL IS OUR PROPERTY AND MUST NOT BE USED EXCEPT IN CONNECTION WITH OUR WORK ALL RIGHTS OF DESIGN AND INVENTION ARE RESERVED THIS IS AN ELECTRONICALLY GENERATED DOCUMENT - DO NOT SCALE THIS PRINT						RFP	CAD FILE ee7308	SIZE A	DRAWING NO. EE7308	PAGE OF	REV. 5		
						DIST WP							

CERTIFICATION DATA SHEET

Model#: 182TTDB6007 AA

WINDING#: CHT18220006 NONE 1

CONN. DIAGRAM: A-EE7308

ASSEMBLY: F1/F2 CAPABLE

OUTLINE: B-SS620311

TYPICAL MOTOR PERFORMANCE DATA

HP	KW	SYNC. RPM	F.L. RPM	FRAME	ENCLOSURE	KVA CODE	DESIGN
5&3	3.70&2.24	3600	3495&2915	182JM	DP	H	B

PH	Hz	VOLTS	FL AMPS	START TYPE	DUTY	INSL	S.F	AMB°C	ELEVATION
3	60/50	230/460#190/ 380	11.8/5.9&9/4.5	LINE OR INVERTER	CONTINUOU S	F7	1.15/1.0	40	3300

FULL LOAD EFF: 86.5&85.5	3/4 LOAD EFF: 87.5	1/2 LOAD EFF: 86.5	GTD. EFF	ELEC. TYPE	NO LOAD AMPS
FULL LOAD PF: 90&89	3/4 LOAD PF: 84	1/2 LOAD PF: 74	85.5	SQ CAGE INV RATED	4.8 / 2.4

F.L. TORQUE	LOCKED ROTOR AMPS	L.R. TORQUE	B.D. TORQUE	F.L. RISE°C
7.6 LB-FT	76 / 38	17 LB-FT 224	22.5 LB-FT 296	55

SOUND PRESSURE @ 3 FT.	SOUND POWER	ROTOR WK^2	MAX. WK^2	SAFE STALL TIME	STARTS /HOUR	APPROX. MOTOR WGT
55 dBA	65 dBA	0.2 LB-FT^2	10 LB-FT^2	10 SEC.	2	75 LBS.

*** SUPPLEMENTAL INFORMATION ***

DE BRACKET TYPE	ODE BRACKET TYPE	MOUNT TYPE	ORIENTATION	SEVERE DUTY	HAZARDOUS LOCATION	DRIP COVER	SCREENS	PAINT
C-FACE	STANDARD	RIGID	HORIZONTAL	FALSE	NONE	FALSE	NONE	BLUE (ENAMEL)

BEARINGS		GREASE	SHAFT TYPE	SPECIAL DE	SPECIAL ODE	SHAFT MATERIAL	FRAME MATERIAL
DE	OPE						
BALL	BALL						
6307	6205	POLYREX EM	JM	NONE	NONE	1045 HOT ROLLED (C-204)	ROLLED STEEL

THERMO-PROTECTORS				THERMISTORS	CONTROL	SPACE /n HEATERS
THERMOSTATS	PROTECTORS	WDG RTDs	BRG RTDs			
NONE	NOT	NONE	NONE	NONE	FALSE	NONE VOLTS

If Inverter equals NONE, contact factory for further
information

INVERTER TORQUE: VARIABLE 10:1
INV. HP SPEED RANGE: NONE
ENCODER: NONE
NONE NONE
NONE NONE PPR
BRAKE: NONE NONE
NONE P/N NONE
NONE NONE
NONE FT-LB NONE V NONE Hz

*
N
O
T
E
S
*

DATE: 06/27/2017 01:27:08 AM

FORM 3531 REV.3 02/07/99

** Subject to change without notice.

Data Sheet

Date: 6/20/2017

Customer: _____

Attention: _____

Submitted by: FAREEDA DUDEKULA



182TTDB6007

Submittal

Data @ 460 V

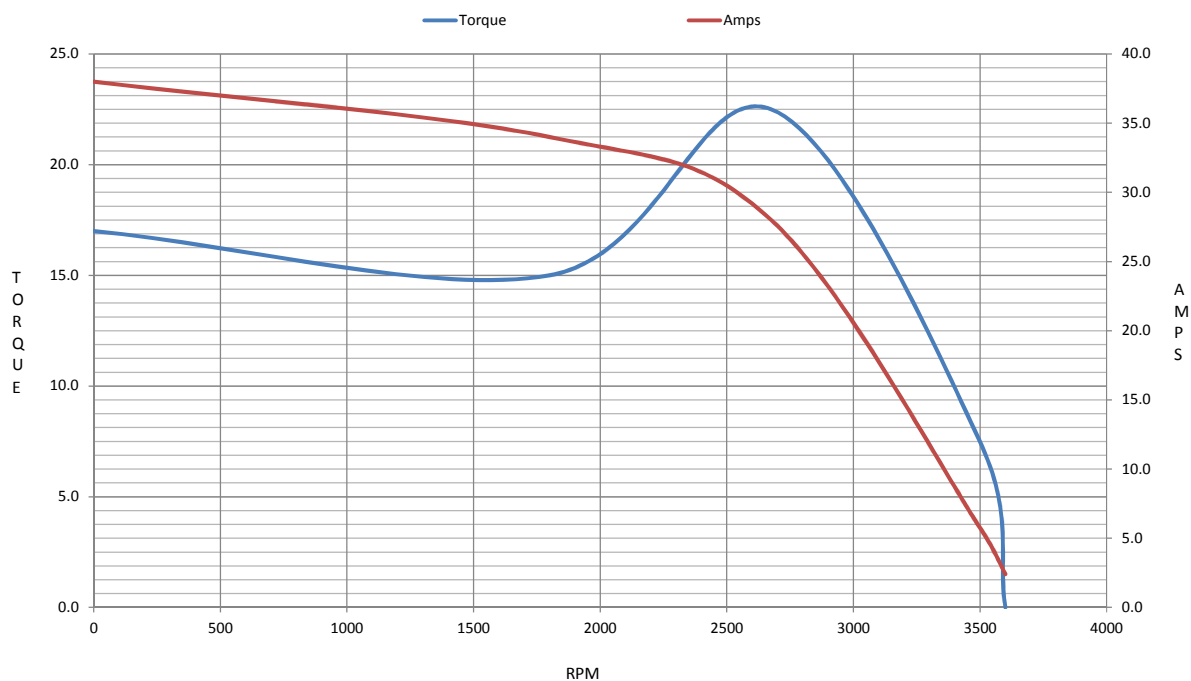
Motor Load Data

Load	0%	25%	50%	75%	100%	115%	125%	LR	
Current (Amps)	2.40	2.60	3.6	4.8	5.9	6.8	7.5	38.0	
Torque (ft-lb)	0.00	1.80	3.7	5.6	7.6	8.8	9.6	17.0	
RPM	3600	3570	3538	3502	3495	3,475	3450	0	
Efficiency (%)		84.0	86.5	87.5	86.5	86.5	85.5		
P.F. (%)	7.0	52.0	74.0	84.0	90.0	90.0	90.0	61.0	

Motor Speed Data

	LR	Pull-Up	BD	Rated	Idle	Information Block																												
Speed (RPM)	0	1800	2675	3495	3600	HP		5.0																										
Current (Amps)	38.0	34.0	28.0	5.9	2.40	Sync. RPM		3600																										
Torque (ft-lb)	17.0	15.0	22.5	7.6	0.00	Frame		182																										
<div><div>— Efficiency (%) — P.F. (%) — Current (Amps)</div><table><caption>Graph Data Points (Approximate)</caption><thead><tr><th>Load (%)</th><th>Efficiency (%)</th><th>P.F. (%)</th><th>Current (Amps)</th></tr></thead><tbody><tr><td>25</td><td>84</td><td>52</td><td>2.4</td></tr><tr><td>50</td><td>86</td><td>75</td><td>4.0</td></tr><tr><td>75</td><td>88</td><td>85</td><td>5.5</td></tr><tr><td>100</td><td>87</td><td>90</td><td>6.5</td></tr><tr><td>125</td><td>85</td><td>90</td><td>7.6</td></tr></tbody></table></div>						Load (%)	Efficiency (%)	P.F. (%)	Current (Amps)	25	84	52	2.4	50	86	75	4.0	75	88	85	5.5	100	87	90	6.5	125	85	90	7.6	Enclosure		DP		
						Load (%)	Efficiency (%)	P.F. (%)	Current (Amps)																									
						25	84	52	2.4																									
						50	86	75	4.0																									
						75	88	85	5.5																									
						100	87	90	6.5																									
						125	85	90	7.6																									
						Construction		TDB																										
						Voltage		30/460#190/381V																										
						Frequency		60 Hz																										
						Design		B																										
						LR Code letter		H																										
						Service Factor		1.15																										
						Temp Rise @ FL		55 °C																										
						Duty		CONT																										
						Ambient		40 °C																										
						Elevation		1,000 feet																										
Rotor/Shaft wk²		0.20 Lb-Ft²																																
Ref Wdg		CHT18220006 NONE																																
Sound Pressure @ 1M		55 dBA																																
VFD Rating		VARIABLE 10:1																																
Outline Dwg		B-SS620311																																
Conn. Diag		A-EE7308																																
Additional Specifications:																																		
0																																		
0																																		
EQUIV CKT (OHMS / PHASE)																																		
R1		R2		X1		X2		Xm																										
1.8140		1.3040		4.4510		1.9850		163.5800																										

Speed -Torque Curve



EC Declaration of Conformity

The undersigned representing
the manufacturer:

Regal Beloit America
100 East Randolph St.
Wausau, WI 54401

and the authorized representative
established within the Community:

Marathon Electric UK
6F Thistleton Road Ind. Estate
Market Overton
Oakham, Rutland LE15 7PP UK

are committed to providing customers with products that comply with applicable regulations and international protocols to which they are subject, including the requirements of the European Parliament Directive on the Harmonization of the laws relating to electrical equipment designed for use within certain voltage limits (2014/35/EU).

Regal Beloit America declares that the following product(s), to which this declaration relates, are in conformity with the relevant sections of the EC standards listed below.

This statement supersedes any statements previously issued pertaining to the product(s) listed below and is subject to change without notice.

Model No : 182TTDB6007

(Model No. may contain prefix and/or suffix characters)

Catalog No : GT0412

Rework No : N/A

Directives :

Low Voltage Directive 2014/35/EU

Harmonized Standards Used :

EN 60034-1: 2010 (IEC 60034-1: 2010)

EN 60034-5: 2001/A1:2007 (IEC 60034-5: 2000/A1:2006)

Authorized Representative:



Michael A. Logsdon
Vice President, Technology

Authorized Representative in the Community:



Julian Clark
Marketing Engineer

Created on 05/25/2023

CE 23