

# PRODUCT INFORMATION PACKET



Model No: 182TPFRB10195  
Catalog No: 182TPFRB10195  
3,1800,TEFC,182TC,3/90/460

Regal and Marathon are trademarks of Regal Rexnord Corporation or one of its affiliated companies.  
©2023 Regal Rexnord Corporation, All Rights Reserved. MC017097E



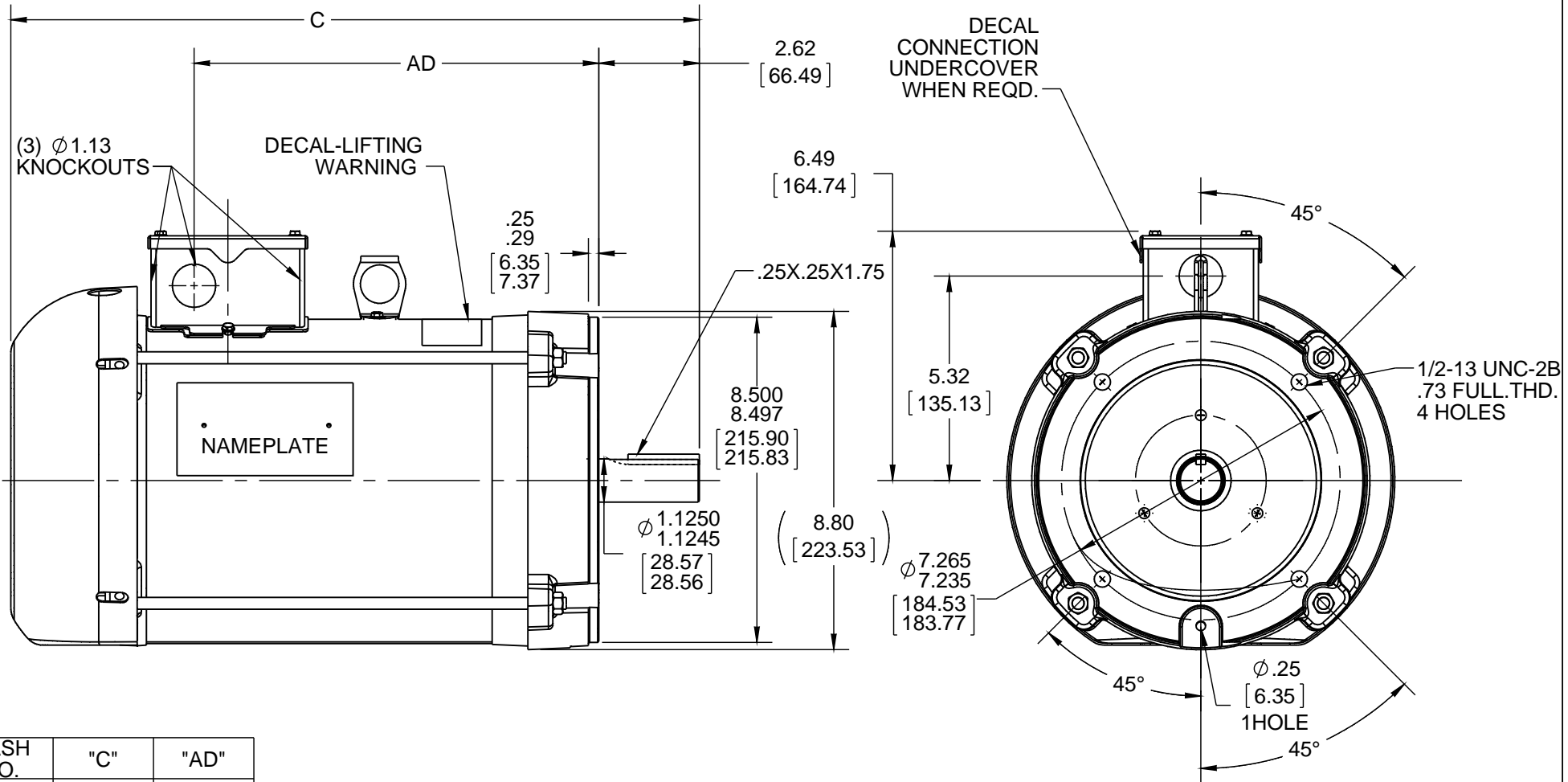
**Nameplate Specifications**

|                        |                       |                            |                                    |
|------------------------|-----------------------|----------------------------|------------------------------------|
| Phase                  | <b>3</b>              | Output HP                  | <b>3 Hp</b>                        |
| Output KW              | <b>2.2 kW</b>         | Voltage                    | <b>460 V</b>                       |
| Speed                  | <b>1800 rpm</b>       | Service Factor             | <b>1</b>                           |
| Frame                  | <b>182TC</b>          | Enclosure                  | <b>Totally Enclosed Fan Cooled</b> |
| Thermal Protection     | <b>Thermostat</b>     | Efficiency                 | <b>91.4 %</b>                      |
| Ambient Temperature    | <b>40 °C</b>          | Frequency                  | <b>90 Hz</b>                       |
| Current                | <b>3.3 A</b>          | Power Factor               | <b>85</b>                          |
| Duty                   | <b>Continuous</b>     | Insulation Class           | <b>F</b>                           |
| Design Code            | <b>No Design Code</b> | KVA Code                   | <b>N/A</b>                         |
| Drive End Bearing Size | <b>6207</b>           | Opp Drive End Bearing Size | <b>6205</b>                        |
| UL                     | <b>Recognized</b>     | CSA                        | <b>N</b>                           |
| CE                     | <b>N</b>              | IP Code                    | <b>54</b>                          |
| Number of Speeds       | <b>1</b>              |                            |                                    |

**Technical Specifications**

|                       |                            |                       |                      |
|-----------------------|----------------------------|-----------------------|----------------------|
| Electrical Type       | <b>AC Permanent Magnet</b> | Starting Method       | <b>Inverter Only</b> |
| Poles                 | <b>6</b>                   | Rotation              | <b>Reversible</b>    |
| Resistance Main       | <b>0 Ohms</b>              | Mounting              | <b>Round</b>         |
| Motor Orientation     | <b>Horizontal</b>          | Drive End Bearing     | <b>Ball</b>          |
| Opp Drive End Bearing | <b>Ball</b>                | Frame Material        | <b>Rolled Steel</b>  |
| Shaft Type            | <b>T</b>                   | Assembly/Box Mounting | <b>F3</b>            |
| Outline Drawing       | <b>036250-750</b>          | Connection Drawing    | <b>EE7300T</b>       |


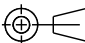
This is an uncontrolled document once printed or downloaded and is subject to change without notice. Date Created:08/24/2023



| DASH NO. | "C"   | "AD"  |
|----------|-------|-------|
| 750      | 15.92 | 9.03  |
| 800      | 16.42 | 9.53  |
| 850      | 16.92 | 10.03 |
| 900      | 17.92 | 10.53 |
| 950      | 18.42 | 11.03 |
| 1000     | 18.92 | 11.53 |
| 1050     | 19.42 | 12.03 |
| 1100     | 19.92 | 12.53 |
| 1150     | 20.42 | 13.03 |

|  |             |      |
|--|-------------|------|
| DRAWING REVISION<br>A  | REVISION BY | DATE |
| ECO<br>ECO-0109990   | APPROVED BY | DATE |
| ECO DESCRIPTION<br><b>NEW DRAWING</b>  |             |      |
| COPYRIGHT REGAL BELOIT AMERICA, INC. ALL RIGHTS RESERVED.<br>PROPRIETARY AND CONFIDENTIAL INFORMATION - THIS DOCUMENT IS THE PROPERTY OF<br>REGAL BELOIT AMERICA, INC. ("OWNER") AND CONTAINS OWNER'S PROPRIETARY<br>INFORMATION. ANY PERSON, CORPORATION OR OTHER FIRM RECEIVING IT IS DEEMED,<br>BY RECEIVING IT, TO AGREE THAT IT, AND/OR ANY PART OF IT, SHALL NOT BE DISCLOSED<br>TO ANY PERSON, CORPORATION OR OTHER ENTITY, DUPLICATED, AND/OR USED, EXCEPT<br>AS EXPRESSLY APPROVED IN WRITING IN ADVANCE BY OWNER. THIS DOCUMENT SHALL<br>BE RETURNED TO OWNER UPON REQUEST. IT MAY BE SUBJECT TO CERTAIN<br>RESTRICTIONS UNDER APPLICABLE EXPORT CONTROL LAWS AND REGULATIONS. |             |      |

| TOLERANCES UNLESS OTHERWISE SPECIFIED: |         |           |       |
|--|---------|-----------|-------|
| DEC.                                   | INCH    | mm        | ANGLE |
| .X                                     | ±0.1    | [±2.5]    | ±0.5° |
| .XX                                    | ±0.01   | [±0.25]   |       |
| .XXX                                   | ±0.005  | [±0.127]  |       |
| .XXXX                                  | ±0.0005 | [±0.0127] |       |
| REMOVE BURRS & BREAK SHARP             |         |           |       |
| EDGES: .003/.015 [.076/.381] X 45°     |         |           |       |
| CORNER FILLETS: R.02 [.51]             |         |           |       |
| MACHINED SURFACES: 125/3.2             |         |           |       |
| mm SHOWN IN [BRACKETS]                 |         |           |       |

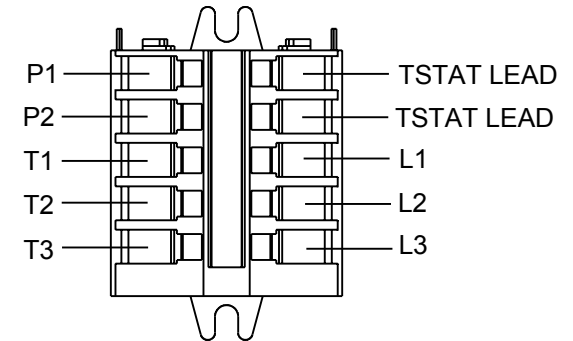
|  |  |                                 |
|--|--|---------------------------------|
| DRAWN BY<br>SR   |  Regal Beloit America, Inc. |                                 |
| DATE<br>09/28/16   |  |                                 |
| APPROVED BY<br>SR  | DESCRIPTION<br><b>OUTLINE</b>  |                                 |
| DATE<br>09/28/16   | 180T-FRAME TEFC ROUND-C_FACE-PMAC  |                                 |
| REFERENCE  | MATERIAL   | PROCESS/FINISH                  |
| THIRD ANGLE PROJECTION  | SIZE<br>A  | DRAWING NUMBER<br><b>036250</b> |
|  |  | SHEET<br>1 OF 1                 |

THREE PHASE - SINGLE VOLTAGE  
MOTOR - CONDUIT BOX @ 'A'

TO REVERSE ROTATION:  
INTERCHANGE ANY TWO LINE  
LEAD CONNECTIONS

NOTE FOR FACTORY USE ONLY:  
TO SURGE TEST:  
FOR 3 LEAD COMMON CONNECT:  
CONNECT P1 TO T1 THEN P2 TO L1  
FOR 6 LEAD COMMON CONNECT:  
CONNECT P1 TO BOTH T1  
THEN P2 TO L1

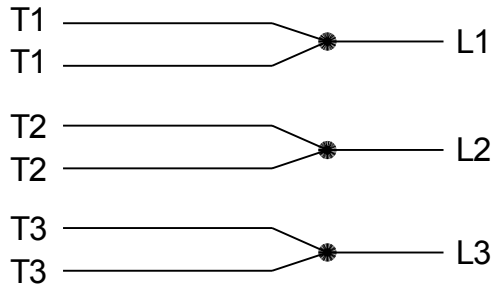
TERMINAL BLOCK WHEN SPECIFIED



PURPLE P1 (TB1)  
BLACK T1 (U1)  
RED T2 (V1)  
BLUE T3 (W1)  
PURPLE P2 (TB2)

T2BM  
T6AW  
T6AL  
T6Z  
T4EG  
T4BF  
T8A  
T6H  
T6A  
T4AX  
T4A  
T2A  
T2F

IF MOTOR HAS MULTIPLE  
T'S PER LEAD CONNECT  
TOGETHER LIKE T'S




A-9806 DECAL

VIEW OF TERMINAL END

|   |                      |                    |
|---|----------------------|--------------------|
| DRAWING REVISION<br>AB  | REVISION BY<br>AJW   | DATE<br>07-17-2015 |
| ECO<br>ECO-0081632  | APPROVED BY<br>T.VUE | DATE<br>07-17-2015 |
| ECO DESCRIPTION<br>REV'D IEC MARKINGS PER IEC-60034-8   |                      |                    |
| <small>COPYRIGHT REGAL BELOIT AMERICA, INC. ALL RIGHTS RESERVED.<br/>PROPRIETARY AND CONFIDENTIAL INFORMATION - THIS DOCUMENT IS THE PROPERTY OF<br/>REGAL BELOIT AMERICA, INC. ("OWNER") AND CONTAINS OWNER'S PROPRIETARY<br/>INFORMATION. ANY PERSON, CORPORATION OR OTHER FIRM RECEIVING IT IS DEEMED,<br/>BY RECEIVING IT, TO AGREE THAT IT, AND/OR ANY PART OF IT, SHALL NOT BE DISCLOSED<br/>TO ANY PERSON, CORPORATION OR OTHER ENTITY, DUPLICATED, AND/OR USED, EXCEPT<br/>AS EXPRESSLY APPROVED IN WRITING IN ADVANCE BY OWNER. THIS DOCUMENT SHALL<br/>BE RETURNED TO OWNER UPON REQUEST. IT MAY BE SUBJECT TO CERTAIN<br/>RESTRICTIONS UNDER APPLICABLE EXPORT CONTROL LAWS AND REGULATIONS.</small> |                      |                    |

|                   |                           |
|-------------------|---------------------------|
| DRAWN BY<br>LZ    | DATE<br>01-04-1994        |
| APPROVED BY<br>GK | DATE<br>01-20-1994        |
| REFERENCE         | THIRD ANGLE<br>PROJECTION |

|  |                           |                 |
|--|---------------------------|-----------------|
|  Regal Beloit America, Inc. |                           |                 |
| DESCRIPTION<br><b>CONN DIAGRAM-EXTERNAL</b><br>3Ø-SINGLE VOLT-MOTOR WITH PROTECTOR                               |                           |                 |
| MATERIAL   | PROCESS/FINISH            |                 |
| SIZE<br>A  | DRAWING NUMBER<br>EE7300T | SHEET<br>1 OF 1 |