

PRODUCT INFORMATION PACKET

Model No: 182THTY7736

Catalog No: Y558A

Black Max® Inverter Duty Speed Ratio Motor, 3 HP, 3 Ph, 60 Hz, 575 V, 1800 RPM, 182TC Frame, TENV



Regal and Marathon are trademarks of Regal Rexnord Corporation or one of its affiliated companies.

©2022 Regal Rexnord Corporation, All Rights Reserved. MC017097E

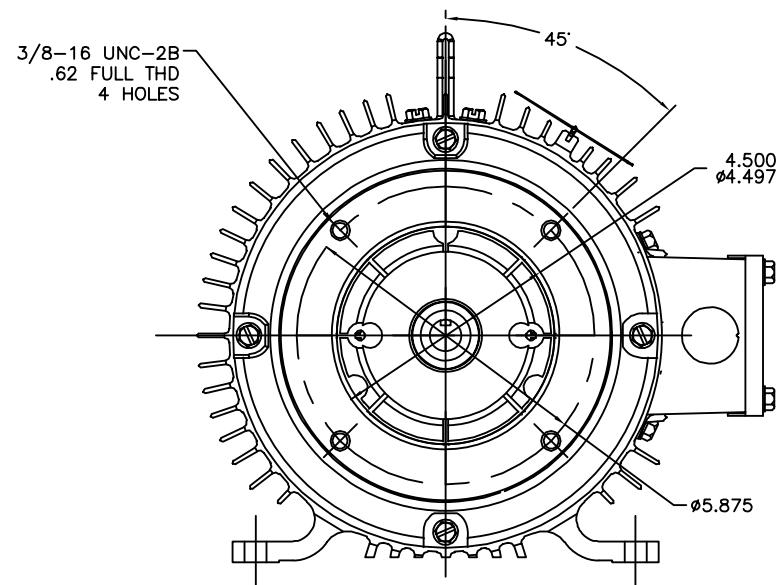
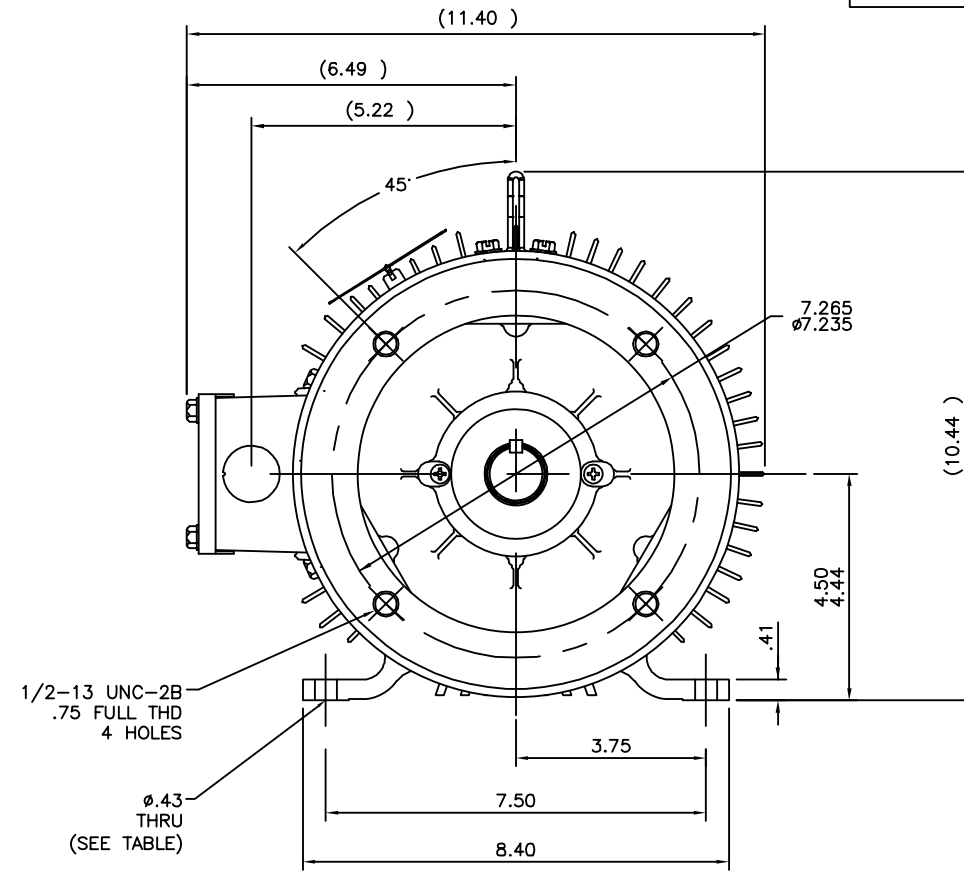
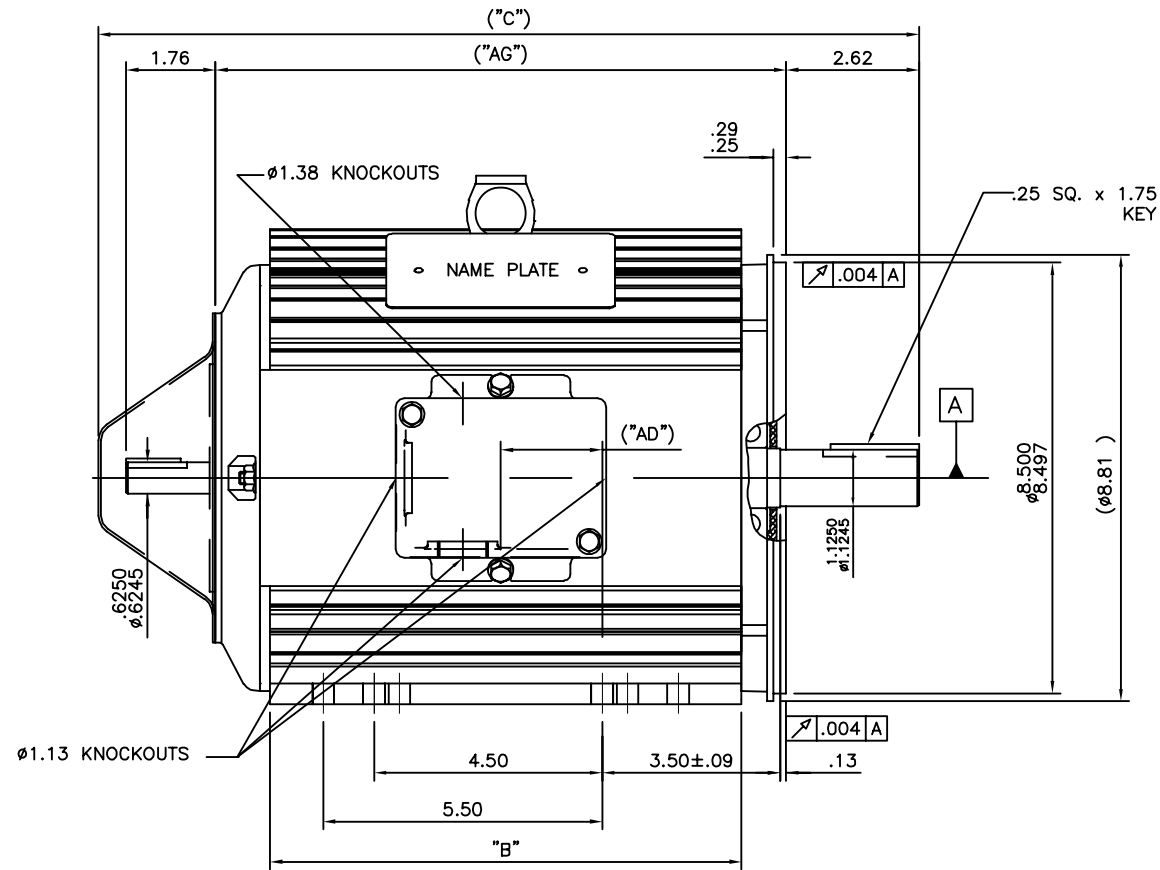
Nameplate Specifications

Output HP	3 Hp	Output KW	2.2 kW
Frequency	60 Hz	Voltage	575 V
Current	3.3 A	Speed	1755 rpm
Service Factor	1	Phase	3
Efficiency	87.5 %	Power Factor	78.5
Duty	Continuous	Insulation Class	F
Design Code	INV	KVA Code	N
Frame	182TC	Enclosure	Totally Enclosed Non Ventilated
Thermal Protection	Thermostat	Ambient Temperature	40 °C
Drive End Bearing Size	6207	Opp Drive End Bearing Size	6206
UL	Recognized	CSA	Y
CE	Y	IP Code	43
Number of Speeds	1		

Technical Specifications

Electrical Type	Squirrel Cage Inverter Duty	Starting Method	Inverter Only
Poles	4	Rotation	Reversible
Resistance Main	0 Ohms	Mounting	Rigid Base
Motor Orientation	Horizontal	Drive End Bearing	Ball
Opp Drive End Bearing	Ball	Frame Material	Aluminum
Shaft Type	T	Overall Length	16.19 in
Frame Length	9.50 in	Shaft Diameter	1.125 in
Shaft Extension	2.62 in	Assembly/Box Mounting	F1/F2 CAPABLE
Inverter Load	CONSTANT 1000:1		
Outline Drawing	036119ME-950	Connection Drawing	005102.13ME

036119ME



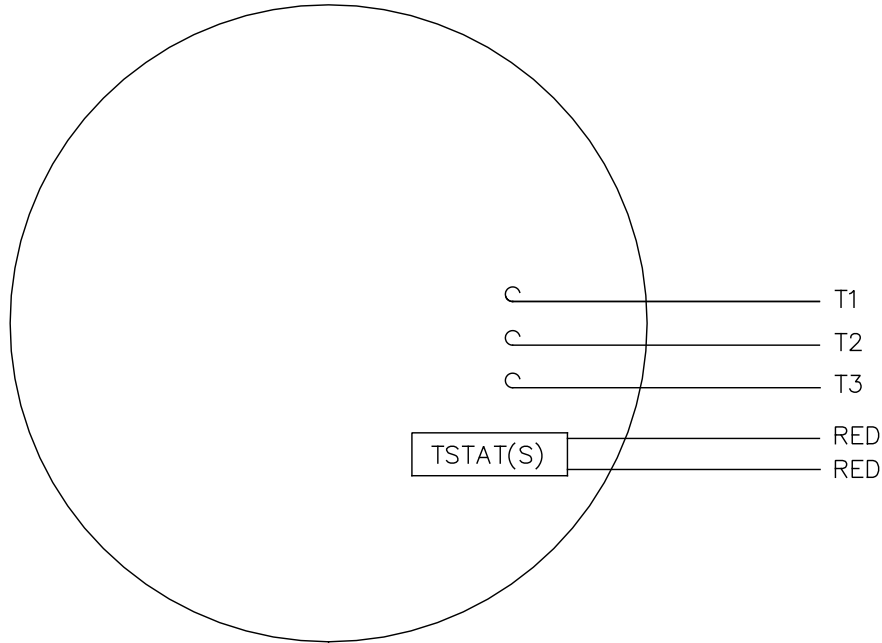
LEAD END BRACKET DETAIL
(COVER REMOVED)

950	16.19	2.00	9.3	11.26	12
DASH NO	"C"	"AD"	"B"	"AG"	FOOT HOLES

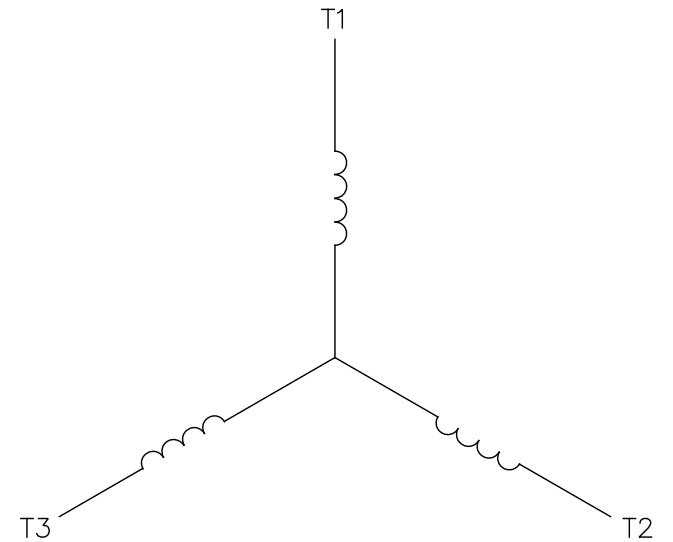
		TOLERANCES UNLESS SPECIFIED		MARATHON ELECTRIC		DRAWN
NO.	REVISION	BY & DATE	CHK	ANG	FINISH	PVR 02/03/15
						CHK ST 02/03/15
					TITLE	APPD
					182/184T-RIGID-TENV-C FACE OUTLINE	SCALE 3=8
					MAT'L. BRAKE/ENCODER PROVISION	REF 035977ME
						FMF
						PREV
			RFP		CAD FILE 036119ME	SIZE B
			DIST			DRAWING NO. 036119ME
						REV.

THIS DRAWING IN DESIGN AND DETAIL IS OUR PROPERTY AND MUST NOT BE USED EXCEPT IN CONNECTION WITH OUR WORK ALL RIGHTS OF DESIGN AND INVENTION ARE RESERVED THIS IS AN ELECTRONICALLY GENERATED DOCUMENT - DO NOT SCALE THIS PRINT

VIEW FROM OUTSIDE OF MOTOR AT SWITCH END.



LINE LEADS



CONNECT LEADS AS FOLLOWS FOR FOUR CONDUCTOR CORD ()

CORD	L1 (RED)	L2 (WHITE)	L3 (BLACK)	(GREEN)
MOTOR	T1	T2	T3	GROUND

				TOLERANCES UNLESS SPECIFIED			DRAWN JGO 03/21/07			
				DEC.	INCHES		CHK			
				.X	±.1		APPD			
				.XX	±.01		SCALE 1=1			
				.XXX	±.005		REF			
				.XXXX	±.0005	MAT'L. DECAL - 004169, (T-STAT) 080582				
NO.	REVISION	BY & DATE	CHK	ANG	±1/2"	FINISH		PREV		
THIS DRAWING IN DESIGN AND DETAIL IS OUR PROPERTY AND MUST NOT BE USED EXCEPT IN CONNECTION WITH OUR WORK ALL RIGHTS OF DESIGN AND INVENTION ARE RESERVED THIS IS AN ELECTRONICALLY GENERATED DOCUMENT - DO NOT SCALE THIS PRINT				RFP	5/1/02	CAD FILE 00510213ME		SIZE A	DRAWING NO. 005102-13ME	REV.
				DIST						

CERTIFICATION DATA SHEET

Model#: 182THTY7736 AA
CONN. DIAGRAM: 005102.13ME
OUTLINE: 036119ME-950

WINDING#: T84180 NONE 4
ASSEMBLY: F1/F2 CAPABLE

TYPICAL MOTOR PERFORMANCE DATA

Table with 8 columns: HP, KW, SYNC. RPM, F.L. RPM, FRAME, ENCLOSURE, KVA CODE, DESIGN. Includes rows for PH, Hz, VOLTS, FL AMPS, START TYPE, DUTY, INSL, S.F, AMB°C, ELEVATION, and various performance metrics like EFFICIENCY, TORQUE, and SOUND PRESSURE.

EQUIVALENT WYE CKT.PARAMETERS (OHMS PER PHASE)

Table with 5 columns: R1, R2, X1, X2, XM and 5 columns: RM, ZREF, XR, TD, TD0.

*** SUPPLEMENTAL INFORMATION ***

Table with 9 columns: DE BRACKET TYPE, ODE BRACKET TYPE, MOUNT TYPE, ORIENTATION, SEVERE DUTY, HAZARDOUS LOCATION, DRIP COVER, SCREENS, PAINT.

Table with 8 columns: BEARINGS (DE, OPE), GREASE, SHAFT TYPE, SPECIAL DE, SPECIAL ODE, SHAFT MATERIAL, FRAME MATERIAL.

Table with 7 columns: THERMO-PROTECTORS (THERMOSTATS, PROTECTORS, WDG RTDs, BRG RTDs), THERMISTORS, CONTROL, SPACE /n HEATERS.

If Inverter equals NONE, contact factory for further information

Table with 2 columns: INVERTER TORQUE, INV. HP SPEED RANGE, ENCODER, BRAKE.

*
N
O
T
E
S
*

NONE	P/N	NONE	
NONE	NONE		
NONE FT-LB		NONE V	NONE Hz

DATE: 06/27/2017 01:24:12 AM
FORM 3531 REV.3 02/07/99
** Subject to change without notice.

Data Sheet

Date: 6/29/2017

182THTY7736

Customer: _____



Attention: _____

Submittal

Submitted by: FAREEDA DUDEKULA

Data @ 575 V

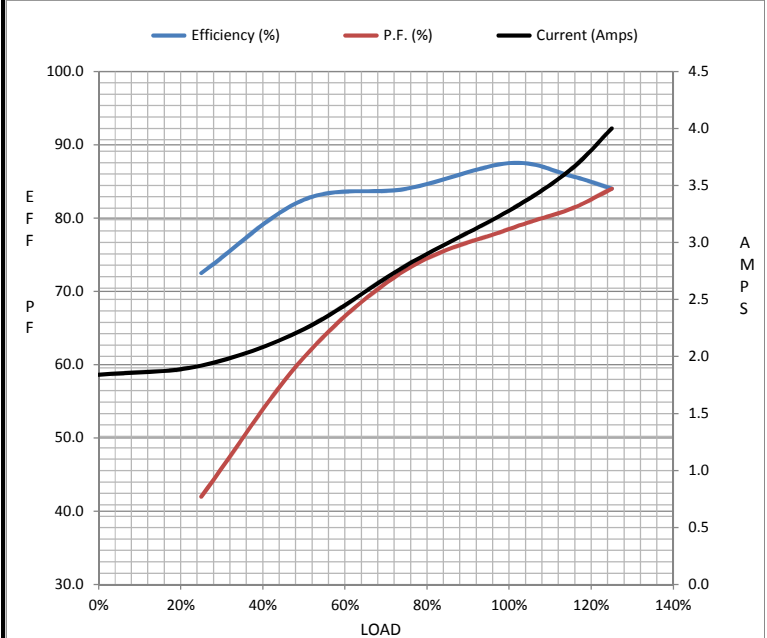
Motor Load Data

Load	0%	25%	50%	75%	100%	115%	125%	LR
Current (Amps)	1.84	1.92	2.24	2.80	3.3	3.6	4.0	36.8
Torque (ft-lb)	0.00	2.20	4.4	6.7	9.0	10.2	11.3	34.0
RPM	1800	1790	1780	1765	1755	1,751	1745	0
Efficiency (%)		72.5	82.5	84.0	87.5	85.8	84.0	
P.F. (%)	10.5	42.0	61.0	73.0	78.5	81.3	84.0	60.5

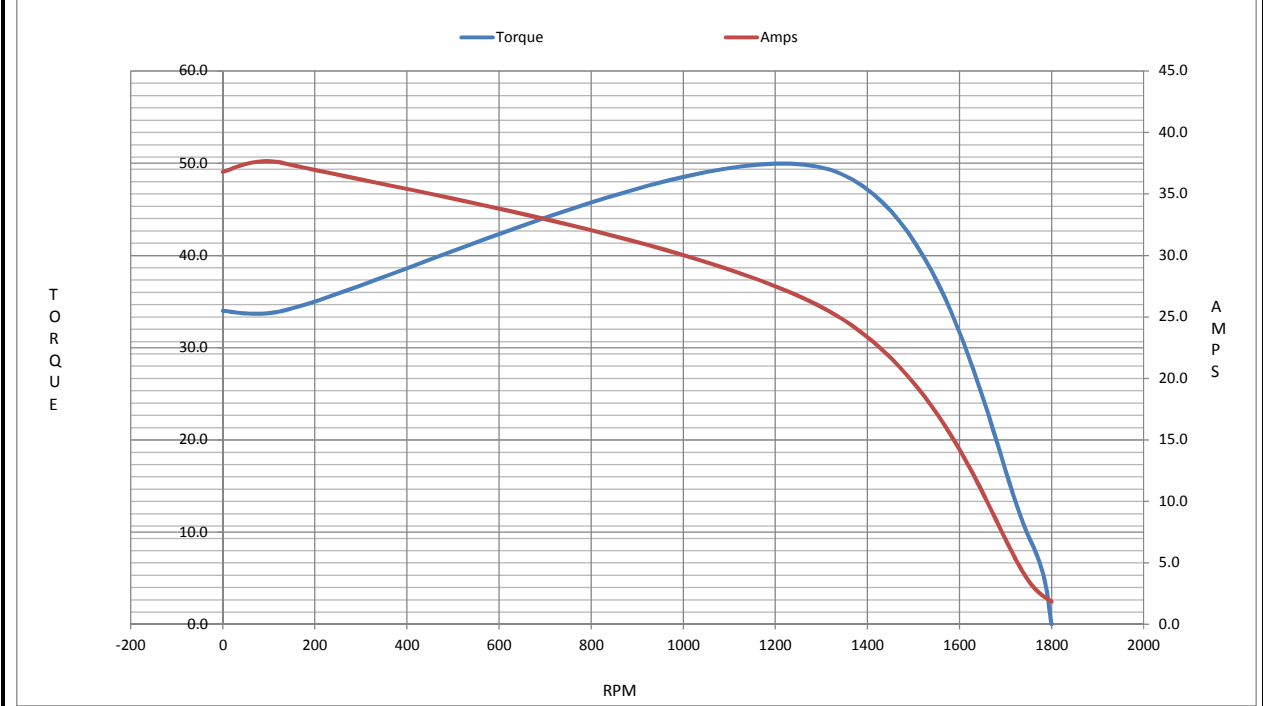
Motor Speed Data

	LR	Pull-Up	BD	Rated	Idle
Speed (RPM)	0	130	1318	1755	1800
Current (Amps)	36.8	37.5	25.4	3.3	1.84
Torque (ft-lb)	34.0	34.0	49.3	9.0	0.00

Information Block				
HP	3.0			
Sync. RPM	1800			
Frame	182			
Enclosure	TENV			
Construction	TTL			
Voltage	575 V			
Frequency	60 Hz			
Design	A			
LR Code letter	N			
Service Factor	1.15			
Temp Rise @ FL	75 °C			
Duty	CONT			
Ambient	40 °C			
Elevation	1,000 feet			
Rotor/Shaft wk ²	0.42 Lb-Ft ²			
Ref Wdg	T84180 NONE			
Sound Pressure @ 1M	62 dBA			
VFD Rating	CONSTANT 1000:1			
Outline Dwg	036119ME-950			
Conn. Diag	005102.13ME			
Additional Specifications:				
0				
0				
EQUIV CKT (OHMS / PHASE)				
R1	R2	X1	X2	Xm
2.4660	2.8160	4.4340	3.2670	147.0780



Speed -Torque Curve



EC Declaration of Conformity

The undersigned representing
the manufacturer:

Regal Beloit America
100 East Randolph St.
Wausau, WI 54401

and the authorized representative
established within the Community:

Marathon Electric UK
6F Thistleton Road Ind. Estate
Market Overton
Oakham, Rutland LE15 7PP UK

are committed to providing customers with products that comply with applicable regulations and international protocols to which they are subject, including the requirements of the European Parliament Directive on the Harmonization of the laws relating to electrical equipment designed for use within certain voltage limits (2014/35/EU).

Regal Beloit America declares that the following product(s), to which this declaration relates, are in conformity with the relevant sections of the EC standards listed below.

This statement supersedes any statements previously issued pertaining to the product(s) listed below and is subject to change without notice.

Model No : 182THTY7736

(Model No. may contain prefix and/or suffix characters)

Catalog No : Y558A

Rework No : N/A

Directives :

Low Voltage Directive 2014/35/EU

Harmonized Standards Used :

EN 60034-1: 2010 (IEC 60034-1: 2010)

EN 60034-5: 2001/A1:2007 (IEC 60034-5: 2000/A1:2006)

Authorized Representative:



Michael A. Logsdon
Vice President, Technology

Authorized Representative in the Community:



Julian Clark
Marketing Engineer

Created on 09/01/2022

CE 22