

# PRODUCT INFORMATION PACKET

Model No: 182THTL7726

Catalog No: Y541

Speed Ratio Motor, 3 HP, 3 Ph, 60 Hz, 230/460 V, 1800 RPM, 182TC Frame, TENV



Regal and are trademarks of Regal Rexnord Corporation or one of its affiliated companies.  
©2022 Regal Rexnord Corporation, All Rights Reserved. MC017097E

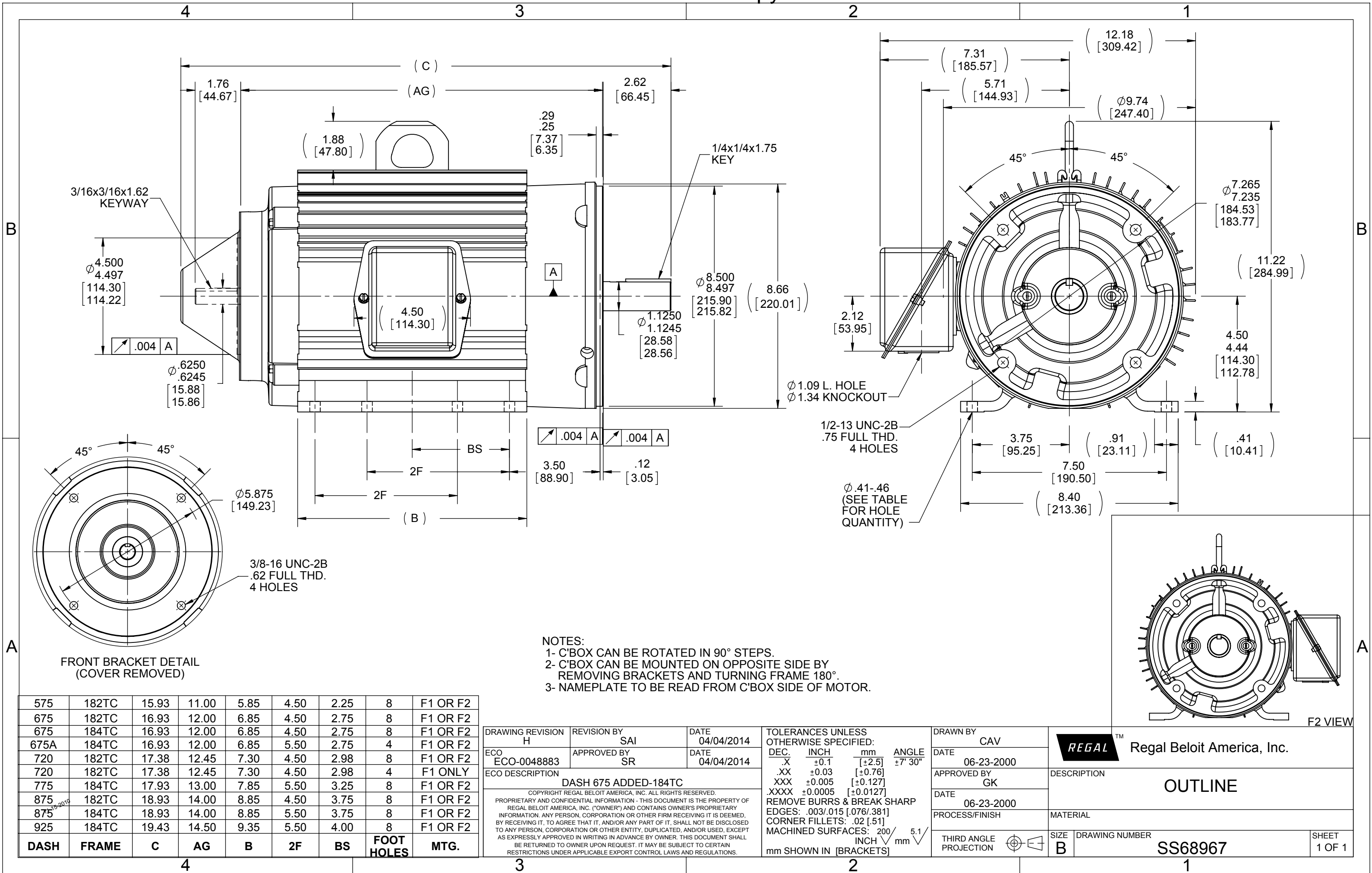
### **Nameplate Specifications**

Output HP	<b>3 Hp</b>	Output KW	<b>2.2 kW</b>
Frequency	<b>60 Hz</b>	Voltage	<b>230/460 V</b>
Current	<b>8.4/4.2 A</b>	Speed	<b>1755 rpm</b>
Service Factor	<b>1</b>	Phase	<b>3</b>
Efficiency	<b>85.5 %</b>	Power Factor	<b>80</b>
Duty	<b>Continuous</b>	Insulation Class	<b>F</b>
Design Code	<b>INV</b>	KVA Code	<b>P</b>
Frame	<b>182TC</b>	Enclosure	<b>Totally Enclosed Non Ventilated</b>
Thermal Protection	<b>No Protection</b>	Ambient Temperature	<b>40 °C</b>
Drive End Bearing Size	<b>6207</b>	Opp Drive End Bearing Size	<b>6206</b>
UL	<b>Recognized</b>	CSA	<b>Y</b>
CE	<b>Y</b>	IP Code	<b>43</b>
Number of Speeds	<b>1</b>		

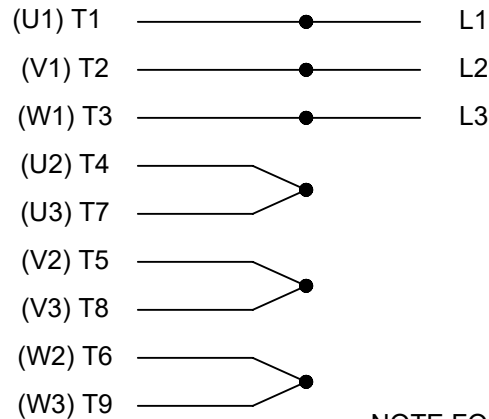
### **Technical Specifications**

Electrical Type	<b>Squirrel Cage Inverter Duty</b>	Starting Method	<b>Inverter Only</b>
Poles	<b>4</b>	Rotation	<b>Reversible</b>
Resistance Main	<b>3.55 Ohms</b>	Mounting	<b>Rigid Base</b>
Motor Orientation	<b>Horizontal</b>	Drive End Bearing	<b>Ball</b>
Opp Drive End Bearing	<b>Ball</b>	Frame Material	<b>Aluminum</b>
Shaft Type	<b>T</b>	Overall Length	<b>17.38 in</b>
Frame Length	<b>7.20 in</b>	Shaft Diameter	<b>1.125 in</b>
Shaft Extension	<b>2.62 in</b>	Assembly/Box Mounting	<b>F1/F2 Capable</b>
Inverter Load	<b>CONSTANT 1000:1</b>		
Outline Drawing	<b>B-SS68967-720</b>	Connection Drawing	<b>A-EE7308T</b>





## HIGH VOLTAGE



NOTE FOR FACTORY USE ONLY:  
TO SURGE TEST FOR COMMON CONNECT:  
HIGH VOLT: CONNECT P1 TO T1  
THEN P2 TO L1  
LOW VOLT: CONNECT P1 TO T1 & T7,  
THEN P2 TO L1

## LOW VOLTAGE

THREE PHASE  
DUAL VOLTAGE MOTOR

## VIEW OF TERMINAL END

NOTE: LEAD'S COLOR CAN BE YELLOW OR WHITE FOR MT2 PLANT

DRAWING REVISION T	REVISION BY ZR	DATE 01-14-2019
ECO ECO-0159915	APPROVED BY DR	DATE 01-15-2019
ECO DESCRIPTION ADDED TERMINAL CONNECTION DIAGRAM		
<small>COPYRIGHT REGAL BELOIT AMERICA, INC. ALL RIGHTS RESERVED. PROPRIETARY AND CONFIDENTIAL INFORMATION - THIS DOCUMENT IS THE PROPERTY OF REGAL BELOIT AMERICA, INC. ("OWNER") AND CONTAINS OWNER'S PROPRIETARY INFORMATION. ANY PERSON, CORPORATION OR OTHER FIRM RECEIVING IT IS DEEMED, BY RECEIVING IT, TO AGREE THAT IT, AND/OR ANY PART OF IT, SHALL NOT BE DISCLOSED TO ANY PERSON, CORPORATION OR OTHER ENTITY, DUPLICATED, AND/OR USED, EXCEPT AS EXPRESSLY APPROVED IN WRITING IN ADVANCE BY OWNER. THIS DOCUMENT SHALL BE RETURNED TO OWNER UPON REQUEST. IT MAY BE SUBJECT TO CERTAIN RESTRICTIONS UNDER APPLICABLE EXPORT CONTROL LAWS AND REGULATIONS.</small>		

DRAWN BY SMC	DATE 05-13-1992
APPROVED BY TB	DATE 05-13-1992
REFERENCE EE7308/EE7300	THIRD ANGLE PROJECTION

Regal Beloit America, Inc.	
DESCRIPTION CONN DIAGRAM-INTERNAL 3 PHASE - DUAL VOLTAGE MOTOR	
MATERIAL	PROCESS/FINISH
SIZE A	DRAWING NUMBER EE7308T
SHEET 1 OF 1	

## CERTIFICATION DATA SHEET

Model#: 182THTL7726 BD  
 CONN. DIAGRAM: A-EE7308T  
 OUTLINE: B-SS68967-720

WINDING#: K1824104 NONE 2  
 ASSEMBLY: F1/F2 CAPABLE

## TYPICAL MOTOR PERFORMANCE DATA

HP	KW	SYNC. RPM	F.L. RPM	FRAME	ENCLOSURE	KVA CODE	DESIGN
3	2.24	1800	1755	182TC	TENV	P	INV

PH	Hz	VOLTS	FL AMPS	START TYPE	DUTY	INSL	S.F	AMB°C	ELEVATION
3	60	230/460	8.4/4.2	INVERTER ONLY	CONTINUOUS	F3	1.0	40	3300

FULL LOAD EFF: 85.5	3/4 LOAD EFF: 84	1/2 LOAD EFF: 82.5	GTD. EFF	ELEC. TYPE	NO LOAD AMPS
FULL LOAD PF: 80	3/4 LOAD PF: 73	1/2 LOAD PF: 61	82.5	SQ CAGE INV DUTY	4.4 / 2.2

F.L. TORQUE	LOCKED ROTOR AMPS	L.R. TORQUE	B.D. TORQUE	F.L. RISE°C
9 LB-FT	98 / 49	33 LB-FT 367	48 LB-FT 533	80

SOUND PRESSURE @ 3 FT.	SOUND POWER	ROTOR WK^2	MAX. WK^2	SAFE STALL TIME	STARTS /HOUR	APPROX. MOTOR WGT
62 dBA	72 dBA	0.42 LB-FT^2	0 LB-FT^2	0 SEC.	0	110 LBS.

## EQUIVALENT WYE CKT.PARAMETERS (OHMS PER PHASE)

R1	R2	X1	X2	XM
2.35554	1.73118	4.26646	4.3043	123.926

RM	ZREF	XR	TD	TD0
4323.22	94.6	1.4	0.0064	0.188

## \*\*\* SUPPLEMENTAL INFORMATION \*\*\*

DE BRACKET TYPE	ODE BRACKET TYPE	MOUNT TYPE	ORIENTATION	SEVERE DUTY	HAZARDOUS LOCATION	DRIP COVER	SCREENS	PAINT
C-FACE	BRAKE OR ENCODER	RIGID	HORIZONTAL	FALSE	NONE	FALSE	NONE	BLACK (ENAMEL)

BEARINGS		GREASE	SHAFT TYPE	SPECIAL DE	SPECIAL ODE	SHAFT MATERIAL	FRAME MATERIAL
DE	OPE						
BALL	BALL						
6207	6206	POLYREX EM	T	NONE	NONE	1144 STRESSPROOF (C-223)	ALUMINUM

THERMO-PROTECTORS				THERMISTORS	CONTROL	SPACE /n HEATERS
THERMOSTATS	PROTECTORS	WDG RTDs	BRG RTDs			
TSTATS (N/C)	NOT	NONE	NONE	NONE	FALSE	NONE VOLTS

If Inverter equals NONE, contact factory for further information

INVERTER TORQUE: CONSTANT 1000:1
INV. HP SPEED RANGE: 2.0 X BASE SPEED
ENCODER: PROVISIONS ONLY
NONE NONE
NONE NONE PPR
BRAKE: PROVISIONS ONLY NONE

\*  
N  
O  
T  
E  
S  
\*

NONE	P/N	NONE	
NONE	NONE		
NONE FT-LB		NONE V	NONE Hz

DATE: 06/27/2017 01:17:21 AM  
FORM 3531 REV.3 02/07/99  
\*\* Subject to change without notice.

## Data Sheet

Date: 6/19/2017

Customer: \_\_\_\_\_

Attention: \_\_\_\_\_

Submitted by: FAREEDA DUDEKULA



182THTL7726

Submittal

Data @ 460 V

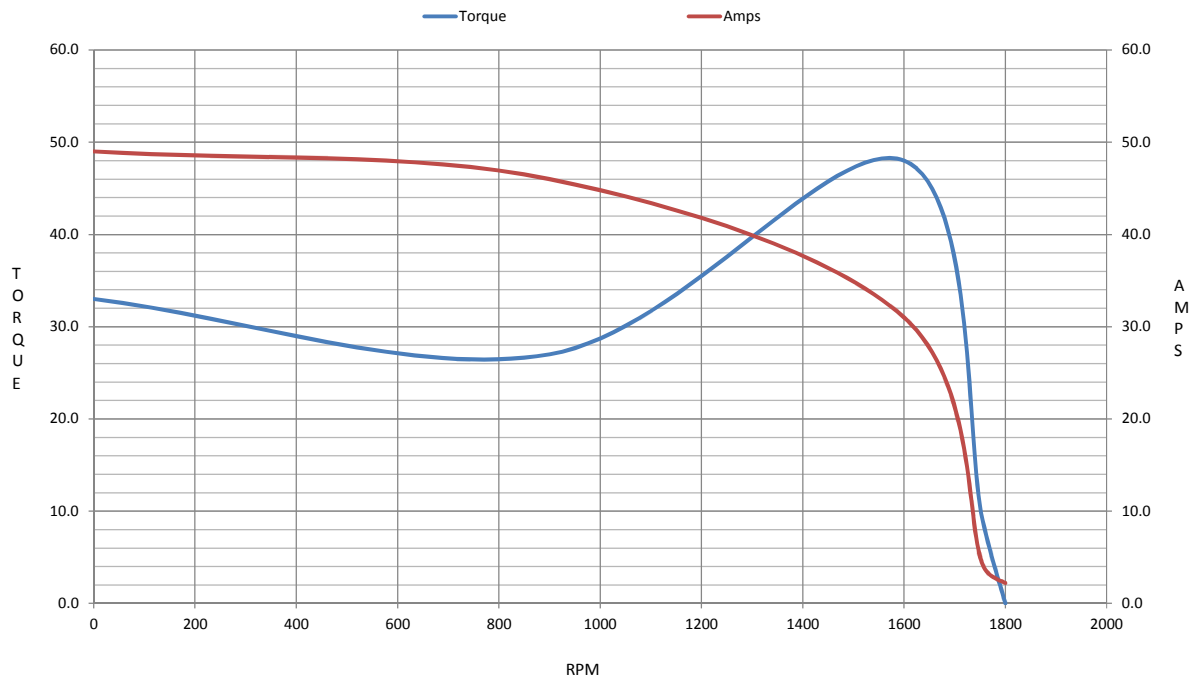
## Motor Load Data

Load	0%	25%	50%	75%	100%	115%	125%	LR	
Current (Amps)	2.20	2.40	2.80	3.5	4.2	4.6	5.0	49.0	
Torque (ft-lb)	0.00	2.20	4.4	6.7	9.0	10.2	11.3	33.0	
RPM	1800	1790	1780	1765	1755	1,751	1745	0	
Efficiency (%)		72.5	82.5	84.0	85.5	84.8	84.0		
P.F. (%)	10.5	42.0	61.0	73.0	80.0	82.0	84.0	60.0	

## Motor Speed Data

	LR	Pull-Up	BD	Rated	Idle																													
Speed (RPM)	0	900	1600	1755	1800																													
Current (Amps)	49.0	46.0	31.0	4.2	2.20																													
Torque (ft-lb)	33.0	27.0	48.0	9.0	0.00																													
<div><div>— Efficiency (%) — P.F. (%) — Current (Amps)</div><table><caption>Graph Data Points (Estimated)</caption><thead><tr><th>Load (%)</th><th>Efficiency (%)</th><th>P.F. (%)</th><th>Current (Amps)</th></tr></thead><tbody><tr><td>25</td><td>73</td><td>43</td><td>2.2</td></tr><tr><td>50</td><td>83</td><td>65</td><td>3.5</td></tr><tr><td>75</td><td>84</td><td>75</td><td>4.2</td></tr><tr><td>100</td><td>86</td><td>80</td><td>4.8</td></tr><tr><td>125</td><td>84</td><td>84</td><td>5.0</td></tr></tbody></table></div>						Load (%)	Efficiency (%)	P.F. (%)	Current (Amps)	25	73	43	2.2	50	83	65	3.5	75	84	75	4.2	100	86	80	4.8	125	84	84	5.0	Information Block				
						Load (%)	Efficiency (%)	P.F. (%)	Current (Amps)																									
						25	73	43	2.2																									
						50	83	65	3.5																									
						75	84	75	4.2																									
						100	86	80	4.8																									
						125	84	84	5.0																									
						HP		3.0																										
						Sync. RPM		1800																										
						Frame		182																										
						Enclosure		TENV																										
						Construction		TTL																										
						Voltage		230/460 V																										
						Frequency		60 Hz																										
						Design		A																										
						LR Code letter		P																										
						Service Factor		1.15																										
Temp Rise @ FL		80 ° C																																
Duty		CONT																																
Ambient		40 ° C																																
Elevation		1,000 feet																																
Rotor/Shaft wk²		0.42 Lb-Ft²																																
Ref Wdg		K1824104 NONE																																
Sound Pressure @ 1M		62 dBA																																
VFD Rating		CONSTANT 1000:1																																
Outline Dwg		B-SS68967-720																																
Conn. Diag		A-EE7308T																																
Additional Specifications:																																		
0																																		
0																																		
EQUIV CKT (OHMS / PHASE)																																		
R1		R2		X1		X2		Xm																										
2.3560		1.7310		4.2660		4.3040		123.9260																										

## Speed -Torque Curve





## EC Declaration of Conformity

The undersigned representing  
the manufacturer:

Regal Beloit America  
100 East Randolph St.  
Wausau, WI 54401

and the authorized representative  
established within the Community:

Marathon Electric UK  
6F Thistleton Road Ind. Estate  
Market Overton  
Oakham, Rutland LE15 7PP UK

are committed to providing customers with products that comply with applicable regulations and international protocols to which they are subject, including the requirements of the European Parliament Directive on the Harmonization of the laws relating to electrical equipment designed for use within certain voltage limits (2014/35/EU).

Regal Beloit America declares that the following product(s), to which this declaration relates, are in conformity with the relevant sections of the EC standards listed below.

This statement supersedes any statements previously issued pertaining to the product(s) listed below and is subject to change without notice.

Model No : 182THTL7726

(Model No. may contain prefix and/or suffix characters)

Catalog No : Y541

Rework No : N/A

Directives :

Low Voltage Directive 2014/35/EU

Harmonized Standards Used :

EN 60034-1: 2010 (IEC 60034-1: 2010)

EN 60034-5: 2001/A1:2007 (IEC 60034-5: 2000/A1:2006)

Authorized Representative:



Michael A. Logsdon  
Vice President, Technology

Authorized Representative in the Community:



Julian Clark  
Marketing Engineer

Created on 09/01/2022

**CE 22**