

# PRODUCT INFORMATION PACKET

Model No: 182TCFR7072

Catalog No: Z119

General Purpose Farm Duty Motor, 2 HP, 1 Ph, 60 Hz, 115/230 V, 1800 RPM, 182T Frame, TEFC



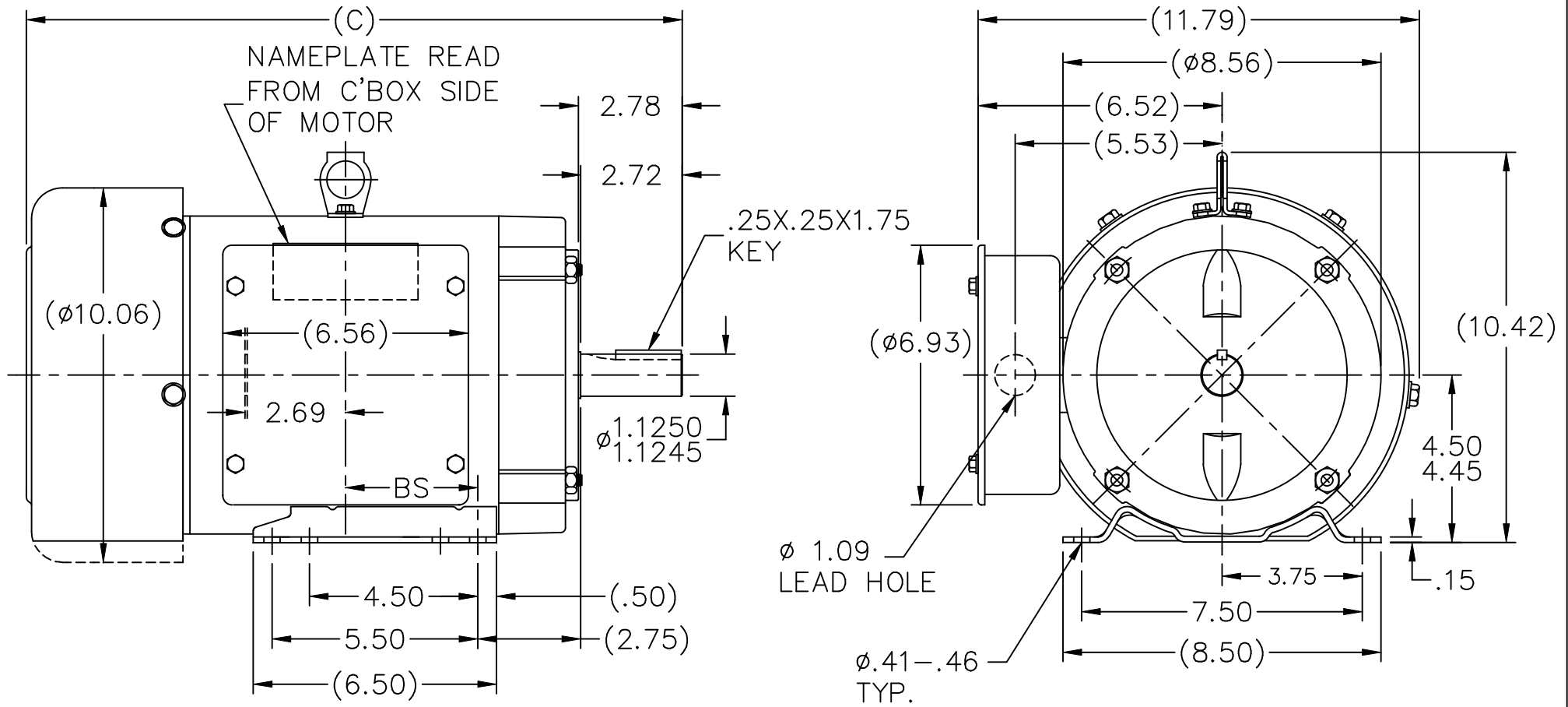
Regal and are trademarks of Regal Rexnord Corporation or one of its affiliated companies.  
©2022 Regal Rexnord Corporation, All Rights Reserved. MC017097E

### Nameplate Specifications

Output HP	<b>2 Hp</b>	Output KW	<b>1.5 kW</b>
Frequency	<b>60 Hz</b>	Voltage	<b>115/230 V</b>
Current	<b>26.4/13.2 A</b>	Speed	<b>1726 rpm</b>
Service Factor	<b>1.15</b>	Phase	<b>1</b>
Efficiency	<b>70 %</b>	Power Factor	<b>69</b>
Duty	<b>Continuous</b>	Insulation Class	<b>B</b>
Design Code	<b>L</b>	KVA Code	<b>J</b>
Frame	<b>182T</b>	Enclosure	<b>Totally Enclosed Fan Cooled</b>
Thermal Protection	<b>Manual</b>	Ambient Temperature	<b>40 °C</b>
Drive End Bearing Size	<b>6206</b>	Opp Drive End Bearing Size	<b>6205</b>
UL	<b>Recognized ( Not Protector)</b>	CSA	<b>Y</b>
CE	<b>Y</b>	IP Code	<b>43</b>
Number of Speeds	<b>1</b>		

### Technical Specifications

Electrical Type	<b>Capacitor Start Induction Run</b>	Starting Method	<b>Across The Line</b>
Poles	<b>4</b>	Rotation	<b>Selective Counterclockwise</b>
Resistance Main	<b>0 Ohms</b>	Mounting	<b>Rigid Base</b>
Motor Orientation	<b>Horizontal</b>	Drive End Bearing	<b>Ball</b>
Opp Drive End Bearing	<b>Ball</b>	Frame Material	<b>Rolled Steel</b>
Shaft Type	<b>T</b>	Overall Length	<b>15.53 in</b>
Frame Length	<b>6.25 in</b>	Shaft Diameter	<b>1.125 in</b>
Shaft Extension	<b>2.75 in</b>	Assembly/Box Mounting	<b>F1 Only</b>
Connection Drawing	<b>A-EE7085FU</b>	Outline Drawing	<b>A-SS65660-625</b>



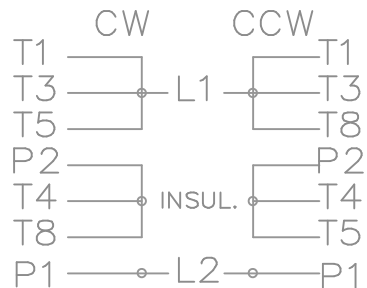
DASH	FR.	C	BS	DASH	FR.	C	BS
575	182T	15.03	2.25	675	184T	16.03	2.75
625	182T	15.53	2.50	775	184T	17.03	3.25
675	182T	16.03	2.75	825	184T	17.53	3.50
725	182T	16.53	3.00	875	184T	18.03	3.75

BOX CAN BE ROTATED IN 90° STEPS.

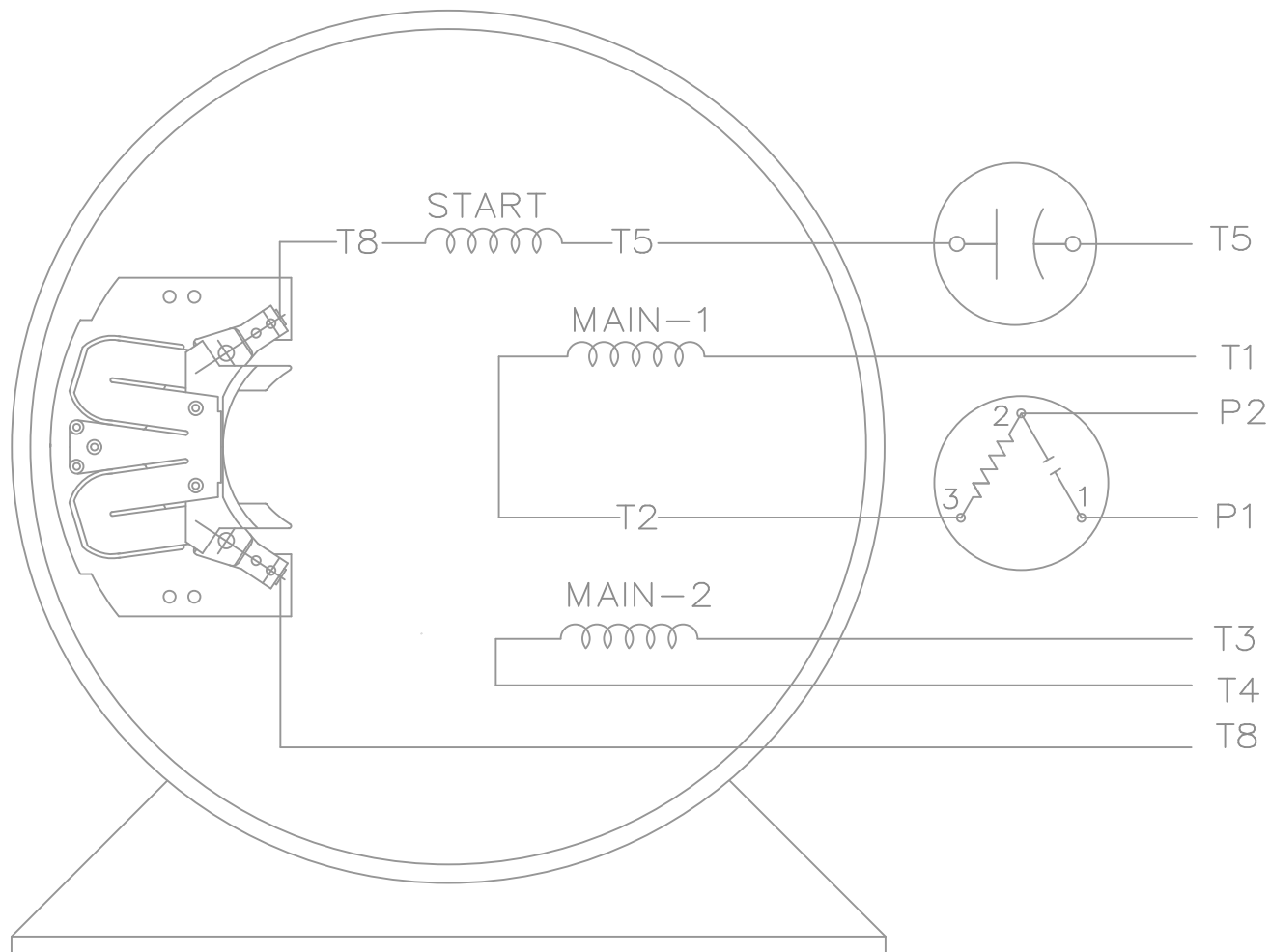
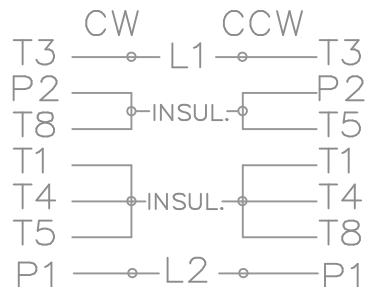
NO.	REVISION	BY & DATE	CHK	TOLERANCES UNLESS SPECIFIED	
				DEC.	INCHES
8	REDRAWN IN AUTOCAD	TAT 06-13-2005	ML	.X	$\pm .1$
7	ADDED LIFT LUG CN 34025	NJS 07-11-2001		.XX	$\pm .03$
6	CORRECTED 'C' DIMENSION CN 31178	TJB 06-18-2001		.XXX	$\pm .005$
5	REMOVED EYEBOLT	BLR 11-29-1995		.XXXX	$\pm .0005$
				ANG	$\pm 7'30''$

	DRAWN	KL 06-20-1994
	CHK	ML 06-24-1994
	APPD	GK 06-24-1994
TITLE	OUTLINE	SCALE 1=4
	180T FR. - BB - SCS - TEFC	REF
MAT'L.		FMF
FINISH		PREV
RFP	CAD FILE ss65660	SIZE A
DIST LB		DRAWING NO. SS65660
		PAGE OF 8
		REV. 8

LOW VOLTAGE



HIGH VOLTAGE



VIEW OF TERMINAL END

				TOLERANCES UNLESS SPECIFIED			DRAWN GK 09-24-1986			
				DEC.	INCHES		CHK FG 09-24-1986			
				.X	± -	TITLE CONNECTION DIAGRAM	APPD DD 09-24-1986	SCALE 1=1		
2	REDRAWN IN AUTOCAD	RWR 08-02-2004	ML	.XXX	± -		REF			
1	NEW DRAWING CN7664C	GK 11-10-1986		.XXXX	± -		MAT'L.	FMF		
NO.	REVISION	BY & DATE	CHK	ANG	± -	FINISH	PREV			
THIS DRAWING IN DESIGN AND DETAIL IS OUR PROPERTY AND MUST NOT BE USED EXCEPT IN CONNECTION WITH OUR WORK ALL RIGHTS OF DESIGN AND INVENTION ARE RESERVED THIS IS AN ELECTRONICALLY GENERATED DOCUMENT - DO NOT SCALE THIS PRINT				RFP	09-24-1986	CAD FILE EE7085FU	SIZE A	DRAWING NO. EE7085FU	PAGE 1 OF 1	REV. 2
				DIST	LB					