

PRODUCT INFORMATION PACKET



Model No: 182TCDW7371
Catalog No: 182TCDW7371
2,1800,DP,184JM,1/60/230,ROUND

Regal and Marathon are trademarks of Regal Rexnord Corporation or one of its affiliated companies.
©2023 Regal Rexnord Corporation, All Rights Reserved. MC017097E



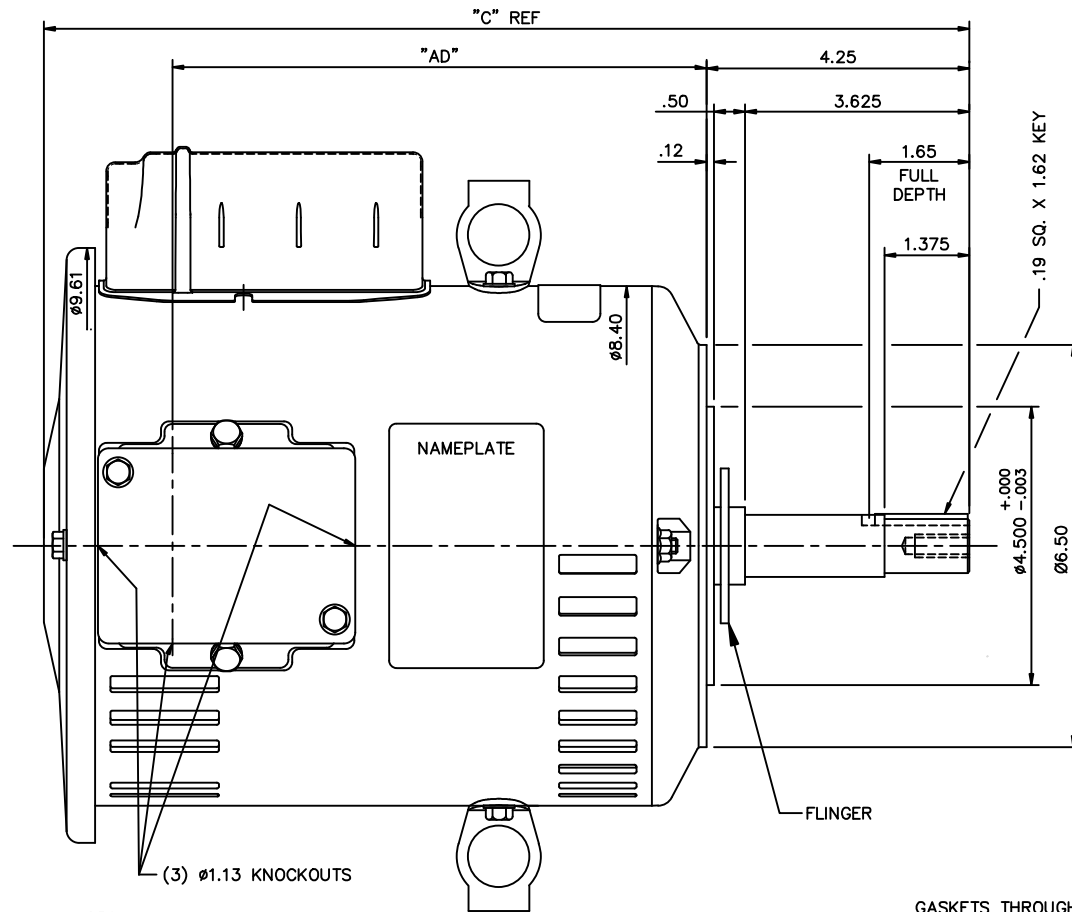
Nameplate Specifications

Phase	1	Output HP	2 Hp
Output KW	1.5 kW	Voltage	230 V
Speed	1750 rpm	Service Factor	1.15
Frame	182JMV	Enclosure	Drip Proof
Thermal Protection	No Protection	Efficiency	75.5 %
Ambient Temperature	50 °C	Frequency	60 Hz
Current	11.5 A	Power Factor	74
Duty	Continuous	Insulation Class	F
Design Code	L	KVA Code	J
Drive End Bearing Size	6207	Opp Drive End Bearing Size	6205
UL	Recognized	CSA	Y
CE	Y	IP Code	22
Number of Speeds	1		

Technical Specifications

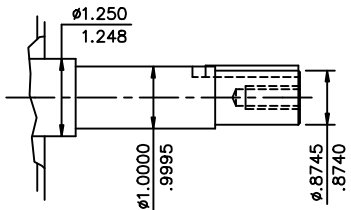
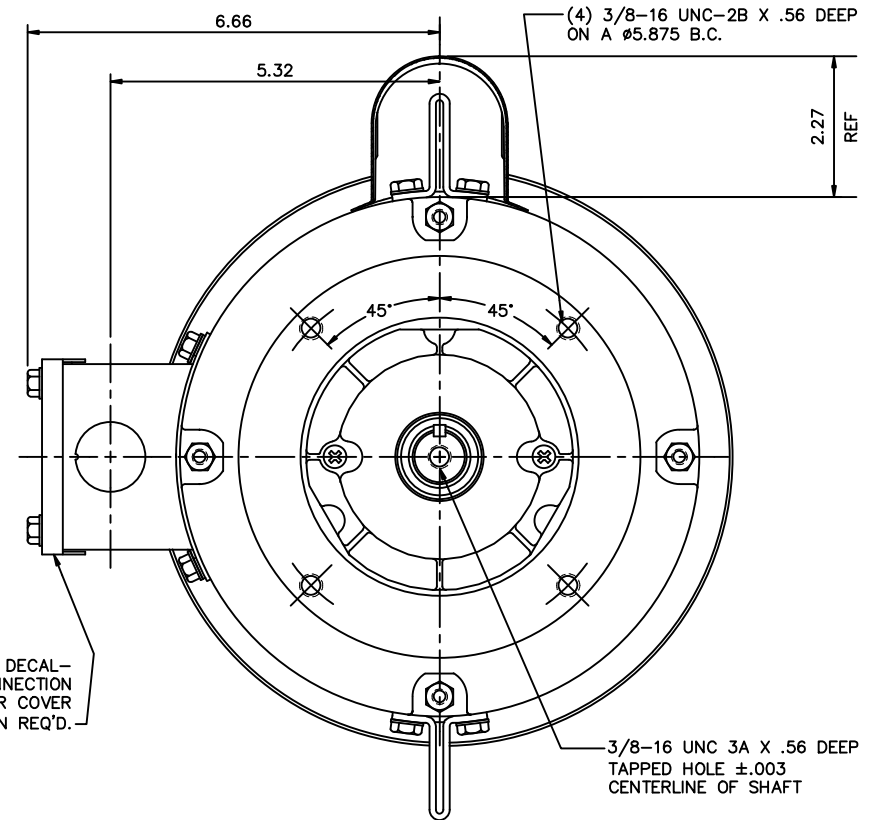
Electrical Type	Capacitor Start Induction Run	Starting Method	Across The Line
Poles	4	Rotation	Selective Counterclockwise
Resistance Main	1.17 Ohms	Mounting	Round
Motor Orientation	Shaft Down	Drive End Bearing	Ball
Opp Drive End Bearing	Ball	Frame Material	Rolled Steel
Shaft Type	JM	Assembly/Box Mounting	F1/F2 CAPABLE
Outline Drawing	035786-900	Connection Drawing	005033.01ME

This is an uncontrolled document once printed or downloaded and is subject to change without notice. Date Created:08/24/2023



DECAL-
CONNECTION
UNDER COVER
WHEN REQ'D.

GASKETS THROUGHOUT
MAXIMUM FACE RUNOUT TO BE .004 T.I.R.
MAXIMUM PILOT ECCENTRICITY TO BE .004 T.I.R.
PERMISSIBLE SHAFT RUNOUT TO BE .002 T.I.R.



SHAFT DETAIL

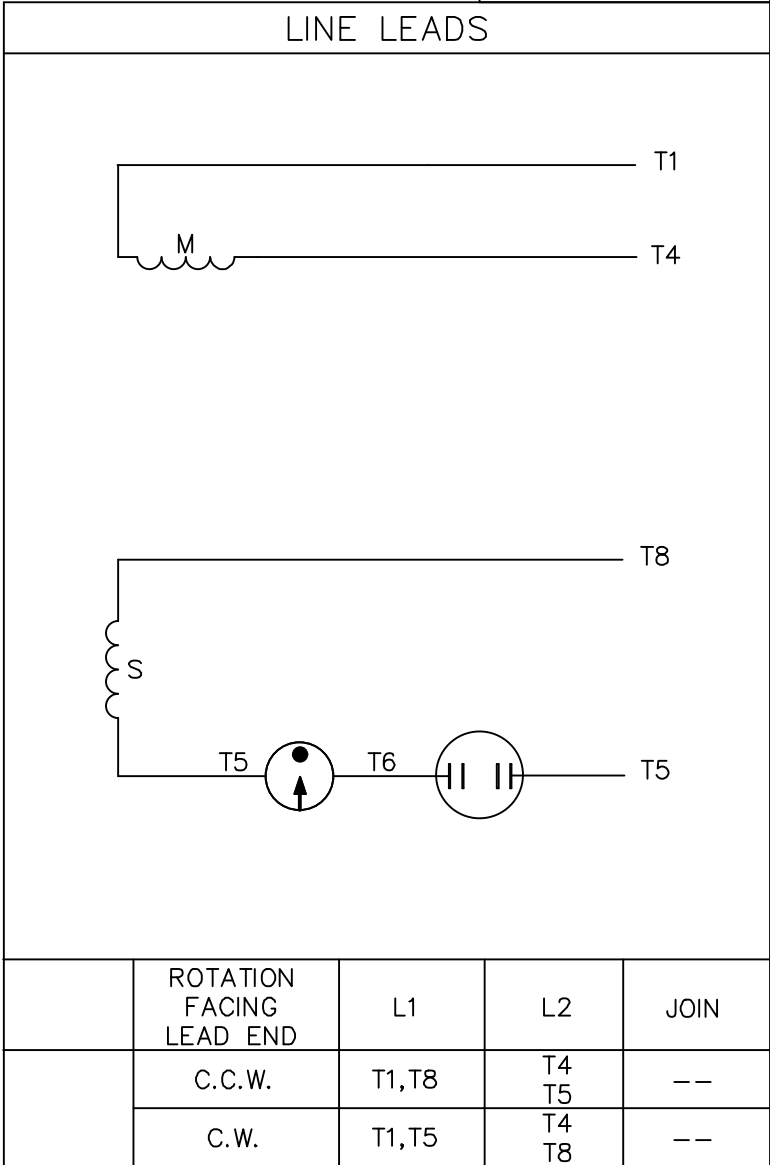
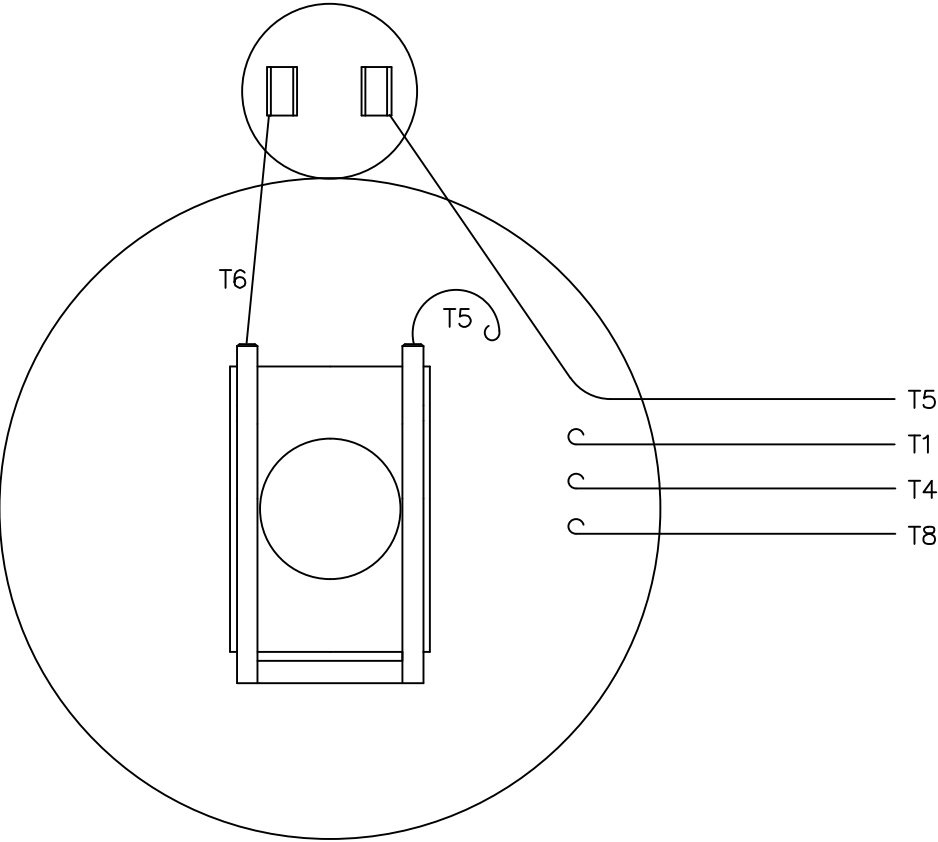
FRAME	"C"	"AD"
800	13.95	7.63
850	14.45	8.13
900	14.95	8.63
950	15.45	9.13
1000	15.95	9.63
1050	16.45	10.13
1100	16.95	10.63
1150	17.45	11.13
1200	17.95	11.63

		TOLERANCES UNLESS SPECIFIED	
		DEC.	INCHES
		.X	±.1
		.XX	±.03
B	UPDATED PER ISAAC #11-3523	JD	8/01/11
A	UPDATED PER ISAAC 11-1719	LST	4/11/11
NO.	REVISION	BY & DATE	CHK
			ANG
			RFP
			DIST

THIS DRAWING IN DESIGN AND DETAIL IS OUR PROPERTY AND MUST NOT BE USED EXCEPT
IN CONNECTION WITH OUR WORK ALL RIGHTS OF DESIGN AND INVENTION ARE RESERVED
THIS IS AN ELECTRONICALLY GENERATED DOCUMENT - DO NOT SCALE THIS PRINT

MARATHON ELECTRIC		DRAWN JD 04/08/2011
		CHK
		APPD
TITLE OUTLINE- 180T FRAME DRIP PROOF- ROUND		SCALE 1=2
		REF 035669
		FMF 182TCDW17039
		PREV
CAD FILE 035786	SIZE B	DRAWING NO. 035786
		REV. B

VIEW FROM OUTSIDE OF MOTOR AT SWITCH END.



ROTATION FACING LEAD END	L1	L2	JOIN
C.C.W.	T1,T8	T4 T5	--
C.W.	T1,T5	T4 T8	--

		TOLERANCES UNLESS SPECIFIED						DRAWN LST 12/18/11	
		DEC.	INCHES					CHK	
		.X	±.1					APPD	
		.XX	±.01					SCALE	1=1
		.XXX	±.005					REF	
		.XXXX	±.0005					FMF	
NO.	REVISION	BY & DATE	CHK	ANG	±1/2"	FINISH			
			RFP			CAD FILE 00503301ME	SIZE	DRAWING NO.	PAGE OF
			DIST				A	005033-01ME	REV.

THIS DRAWING IN DESIGN AND DETAIL IS OUR PROPERTY AND MUST NOT BE USED EXCEPT IN CONNECTION WITH OUR WORK ALL RIGHTS OF DESIGN AND INVENTION ARE RESERVED THIS IS AN ELECTRONICALLY GENERATED DOCUMENT - DO NOT SCALE THIS PRINT



TITLE EXTERNAL WIRING DIAGRAM
TYPE "C" W/O PROTECTOR
MAT'L. DECAL- 004018