

PRODUCT INFORMATION PACKET

marathon®
Motors

Model No: 182TCDR7354

Catalog No: Z424

2 HP Close-Coupled Pump Motor, 1 phase, 1800 RPM, 115/230 V, 182JP Frame, ODP
Close-Coupled Pump Motors



Regal and Marathon are trademarks of Regal Rexnord Corporation or one of its affiliated companies.
©2021 Regal Rexnord Corporation, All Rights Reserved. MC017097E

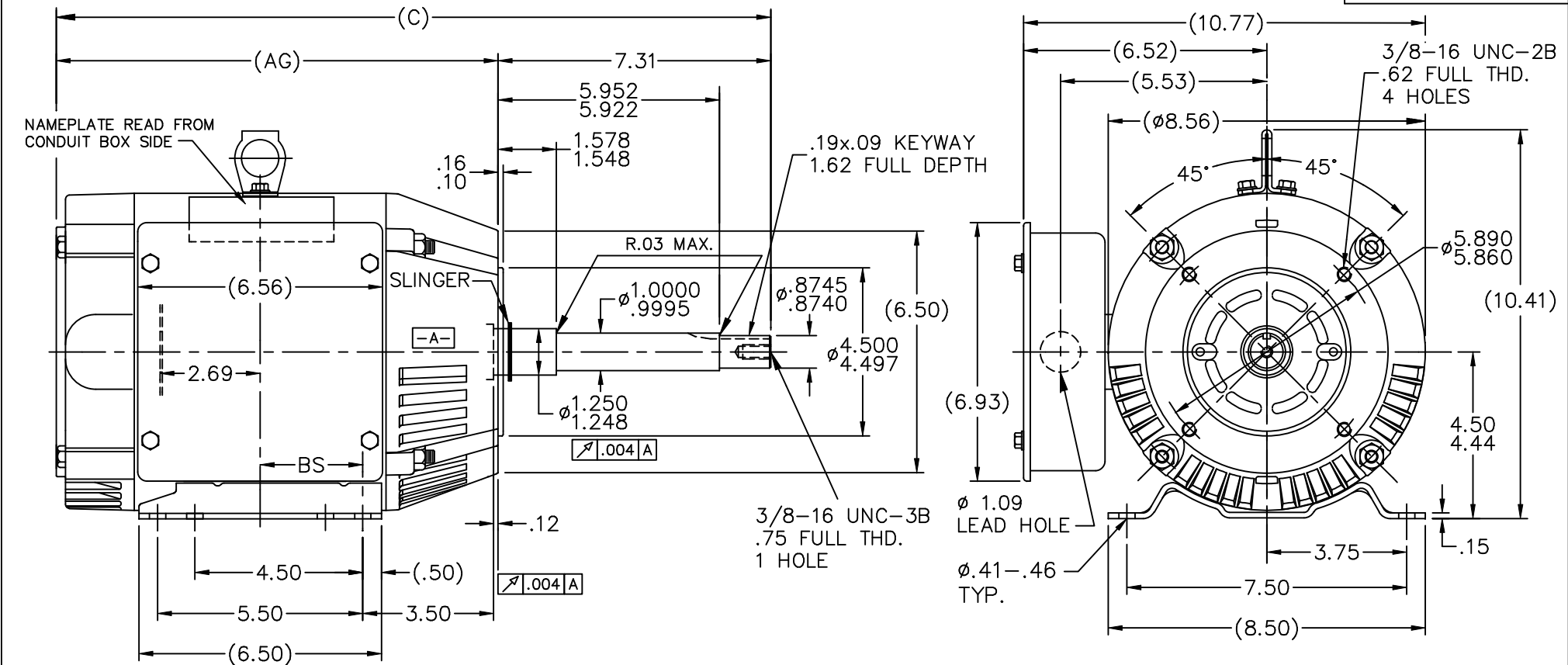
RegalRexnord

Nameplate Specifications

Output HP	2 Hp	Output KW	1.5 kW
Frequency	60 Hz	Voltage	115/230 V
Current	23.0/11.5 A	Speed	1725 rpm
Service Factor	1.15	Phase	1
Efficiency	72 %	Power Factor	74
Duty	Continuous	Insulation Class	B
Design Code	L	KVA Code	J
Frame	182JP	Enclosure	Drip Proof
Thermal Protection	No	Ambient Temperature	40 °C
Drive End Bearing Size	6307	Opp Drive End Bearing Size	6205
UL	Recognized	CSA	Y
CE	Y	IP Code	22
Number of Speeds	1		


Technical Specifications

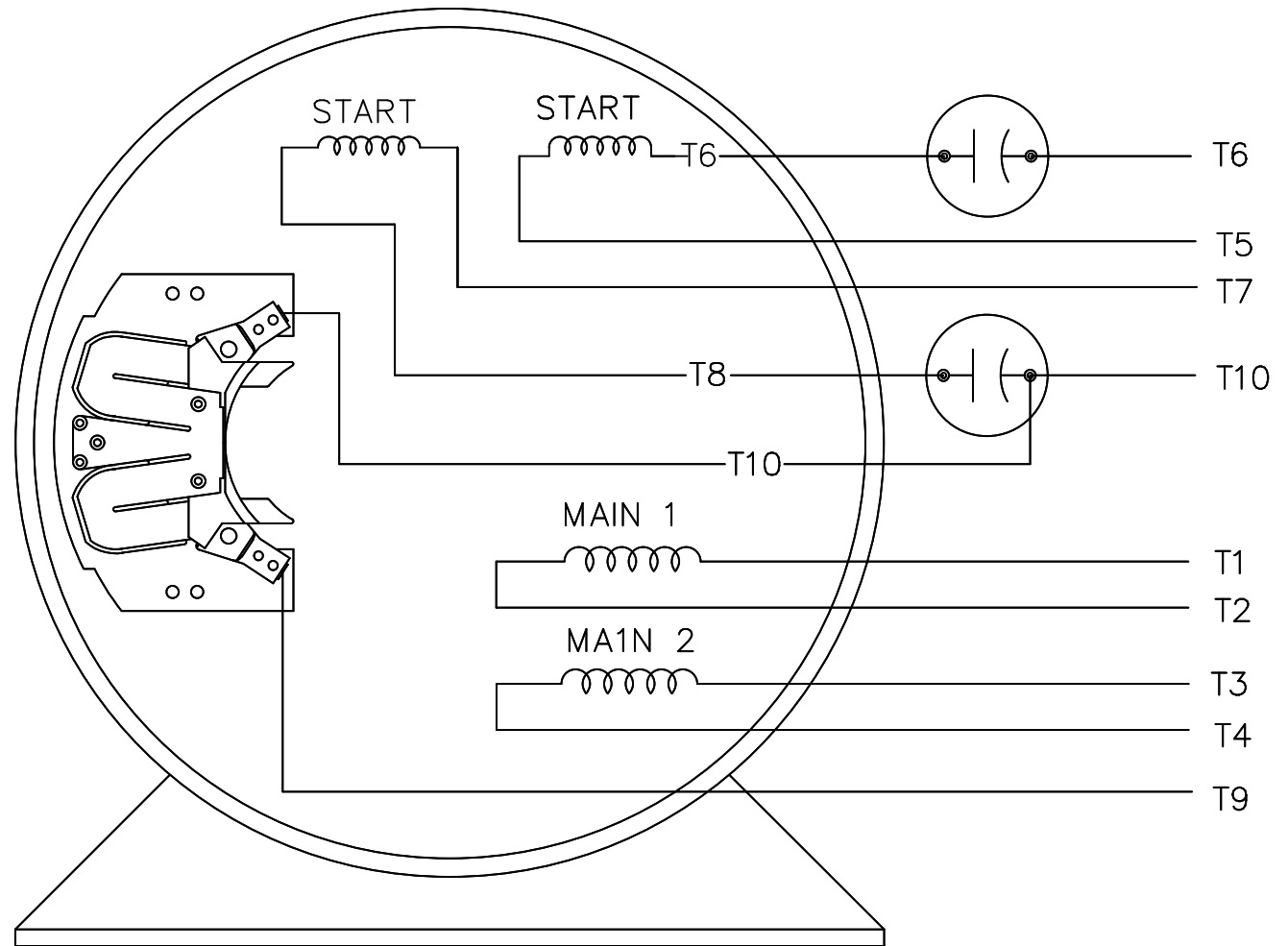
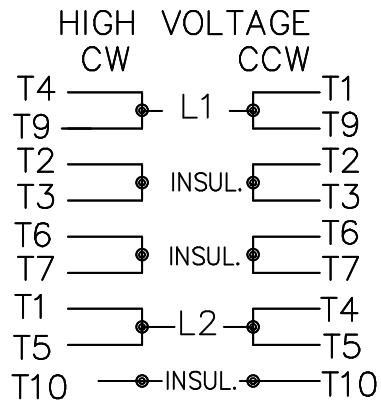
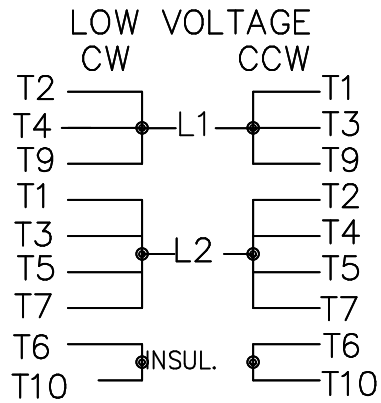
Electrical Type	Capacitor Start Induction Run	Starting Method	Across The Line
Poles	4	Rotation	Selective Counterclockwise
Resistance Main	0 Ohms	Mounting	Rigid Base
Motor Orientation	Horizontal	Drive End Bearing	Ball
Opp Drive End Bearing	Ball	Frame Material	Rolled Steel
Shaft Type	JP	Overall Length	19.15 in
Frame Length	6.73 in	Shaft Diameter	1.125 in
Shaft Extension	7.34 in	Assembly/Box Mounting	F1 ONLY
Outline Drawing	A-SS67000-675	Connection Drawing	A-EE7085FR



BOX CAN BE ROTATED IN 90° STEPS.

DASH	FR.	AG	C	BS	DASH	FR.	AG	C	BS
625	182	11.34	18.65	2.50	775	184	12.84	20.15	3.25
675	182	11.84	19.15	2.75	825	184	13.34	20.65	3.50
725	182	12.34	19.65	3.00	875	184	13.84	21.15	3.75
775	182	12.84	20.15	3.25					

				TOLERANCES UNLESS SPECIFIED			DRAWN DJK 12-16-1992				
				DEC.	INCHES		CHK ML 12-17-1992				
10	REDRAWN IN AUTOCAD	TAT 07-13-2004	ML	.X	±.1	TITLE OUTLINE 180T FR.-BB-SCS-DR.PR.-C' FACE	APPD GK 12-17-1992				
9	ADDED LIFT LUG CN 34025	HLB 07-12-2001		.XX	±.03		SCALE 1=4				
8	REMOVED EYEBOLT	BLR 11-09-1995		.XXX	±.005		REF				
7	ADDED NEW BASE	DT 10-16-1995		.XXXX	±.0005		FMF				
NO.	REVISION	BY & DATE	CHK	ANG	±7'30"	FINISH	PREV				
THIS DRAWING IN DESIGN AND DETAIL IS OUR PROPERTY AND MUST NOT BE USED EXCEPT IN CONNECTION WITH OUR WORK ALL RIGHTS OF DESIGN AND INVENTION ARE RESERVED THIS IS AN ELECTRONICALLY GENERATED DOCUMENT - DO NOT SCALE THIS PRINT			RFP		CAD FILE ss67000		SIZE	DRAWING NO.	PAGE	OF	REV.
			DIST LB				A	SS67000			10



VIEW OF TERMINAL END

			TOLERANCES UNLESS SPECIFIED			MARATHON ELECTRIC	DRAWN GK 09-24-1986		
			DEC.	INCHES			CHK	ML 09-24-1986	
			.X	± -			APPD	FG 09-24-1986	
			.XX	± -		TITLE CONNECTION DIAGRAM	SCALE	1=1	
2	REDRAWN IN AUTOCAD	RWR 08-02-2004	.XXX	± -			REF		
1	NEW DRAWING CN7664C	GK 11-06-1986	.XXXX	± -		MAT'L. 180-210 SWITCH	FMF		
NO.	REVISION	BY & DATE	CHK	ANG	± -	FINISH	PREV		
THIS DRAWING IN DESIGN AND DETAIL IS OUR PROPERTY AND MUST NOT BE USED EXCEPT IN CONNECTION WITH OUR WORK ALL RIGHTS OF DESIGN AND INVENTION ARE RESERVED THIS IS AN ELECTRONICALLY GENERATED DOCUMENT - DO NOT SCALE THIS PRINT			RFP			CAD FILE EE7085FR	SIZE	DRAWING NO.	PAGE 1 OF 1
			DIST	LB			A	EE7085FR	REV. 2