

PRODUCT INFORMATION PACKET



Model No: 182TCDR7026

Catalog No: I112

2 HP, General Purpose Motors, 1 phase, 1800 RPM, 115/208-230 V, 182T Frame, DP
General Purpose Motors

Regal and Marathon are trademarks of Regal Rexnord Corporation or one of its affiliated companies.
©2021 Regal Rexnord Corporation, All Rights Reserved. MC017097E

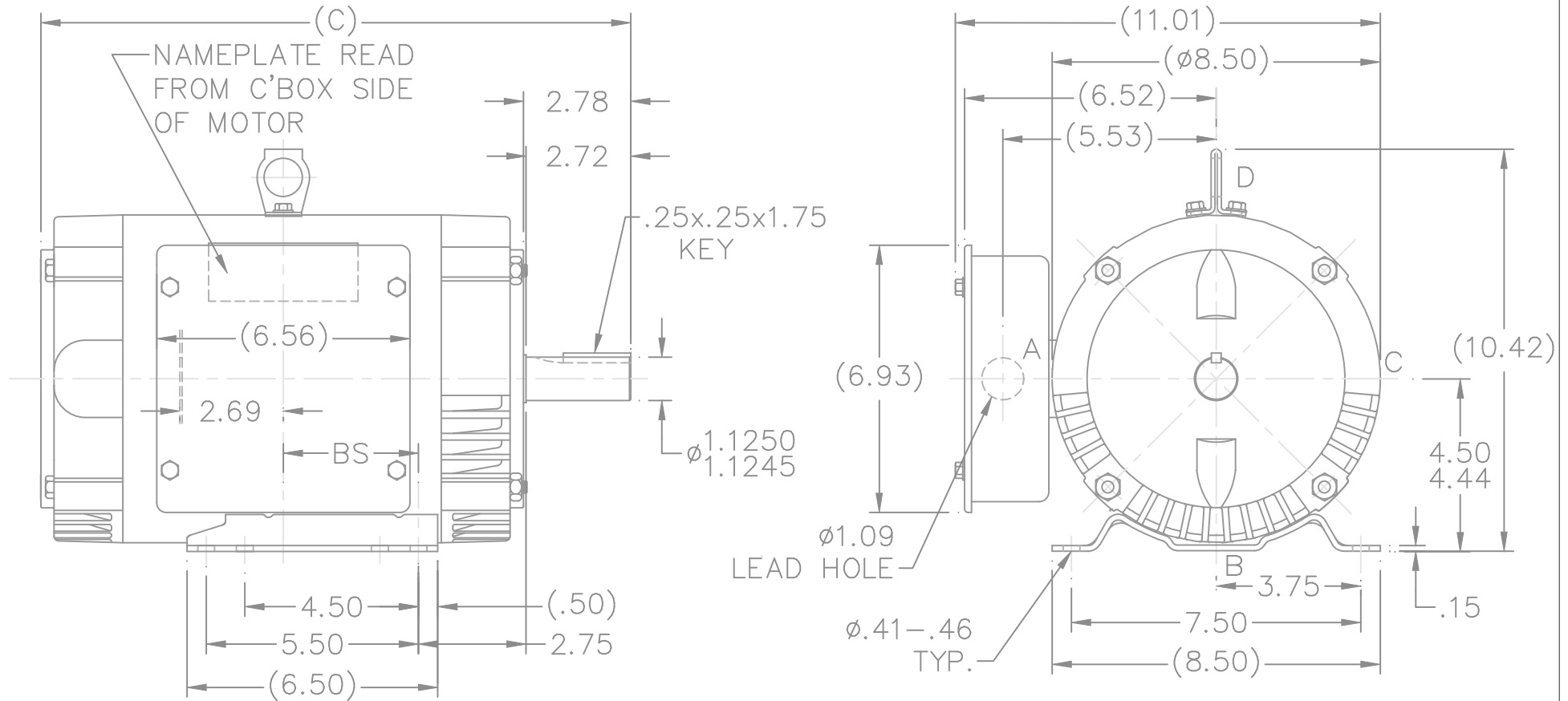


Nameplate Specifications

Output HP	2 Hp	Output KW	1.5 kW
Frequency	60 Hz	Voltage	115/208-230 V
Current	23.0/12.7-11.5 A	Speed	1725 rpm
Service Factor	1.15	Phase	1
Efficiency	72 %	Power Factor	74
Duty	Continuous	Insulation Class	B
Design Code	L	KVA Code	J
Frame	182T	Enclosure	Drip Proof
Thermal Protection	No	Ambient Temperature	40 °C
Drive End Bearing Size	6206	Opp Drive End Bearing Size	6203
UL	Recognized	CSA	Y
CE	Y	IP Code	22
Number of Speeds	1		

Technical Specifications

Electrical Type	Capacitor Start Induction Run	Starting Method	Across The Line
Poles	4	Rotation	Selective Counterclockwise
Resistance Main	0 Ohms	Mounting	Rigid Base
Motor Orientation	Shaft Up	Drive End Bearing	Ball
Opp Drive End Bearing	Ball	Frame Material	Rolled Steel
Shaft Type	T	Overall Length	13.79 in
Frame Length	6.75 in	Shaft Diameter	1.125 in
Shaft Extension	2.75 in	Assembly/Box Mounting	W8
Connection Drawing	A-EE7085FR	Outline Drawing	A-SS65665-675



BOX CAN BE ROTATED IN 90° STEPS.

DASH	FR.	C	BS		DASH	FR.	C	BS	
575	182T	12.79	2.25		675	184T	13.79	2.75	
625	182T	13.29	2.50		725	184T	14.29	3.00	
675	182T	13.79	2.75		775	184T	14.79	3.25	
725	182T	14.29	3.00		825	184T	15.29	3.50	
775	182T	14.79	3.25		875	184T	15.79	3.75	
825	182T	15.29	3.50		925	184T	16.29	4.00	

				TOLERANCES UNLESS SPECIFIED	
				DEC.	INCHES
8	UPDATED DRAWING			RJW 05-09-2007	.X $\pm .1$
7	ADDED LIFT LUG CN34025			NJS 07-11-2001	.XX $\pm .03$
6	REMOVED EYEBOLT			BLR 11-09-1995	.XXX $\pm .005$
5	REDRAWN ON CAD - ADDED EYEBOLT			KL 06-29-1994	.XXXX $\pm .0005$
NO.	REVISION			BY & DATE	CHK ANG $\pm 7'30''$



TITLE OUTLINE
180T FR. - BB - SCS - DR.PR.

MAT'L.

FINISH

CAD FILE SS65665

SIZE

DRAWING NO. PAGE OF REV.

A

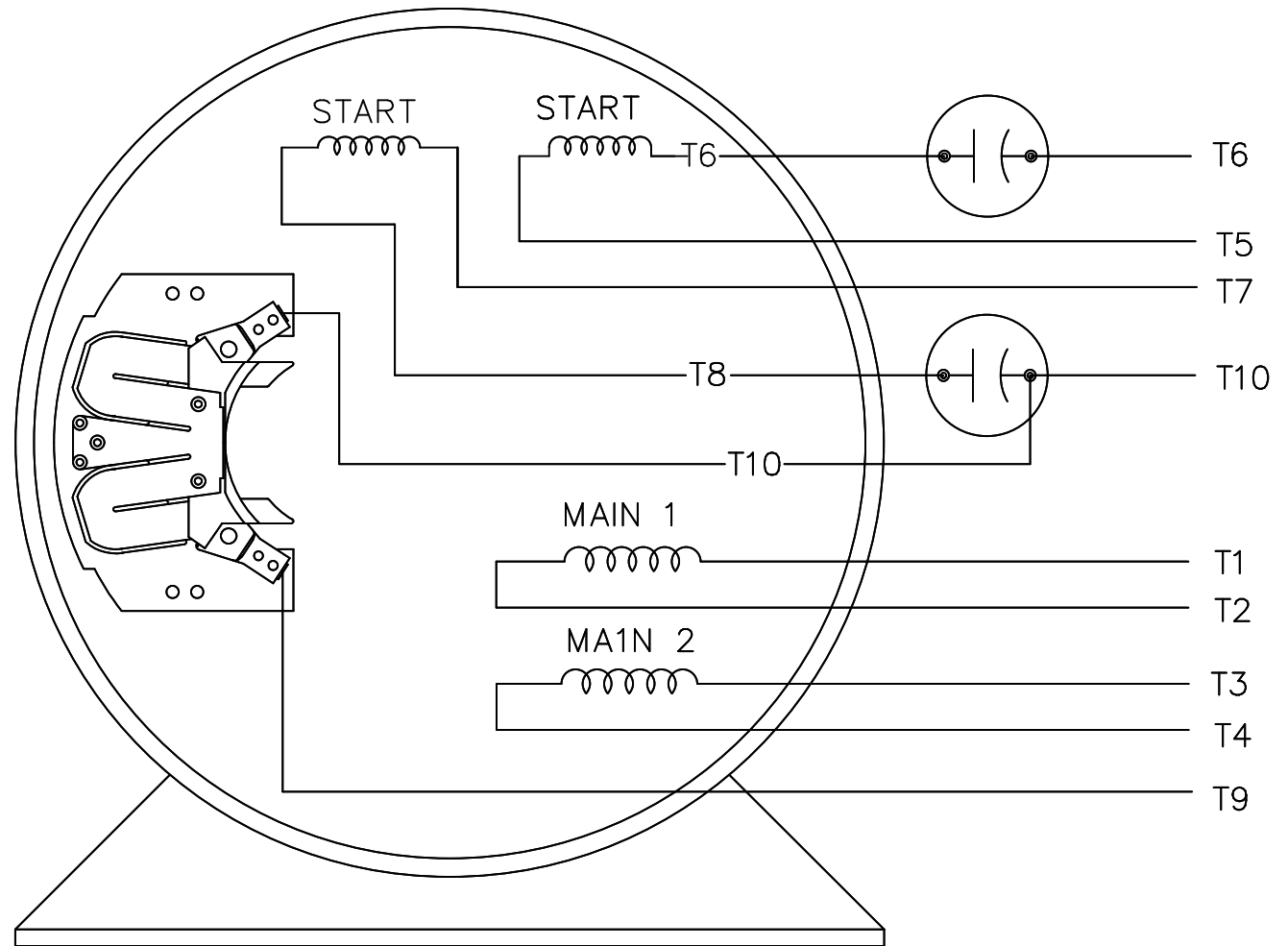
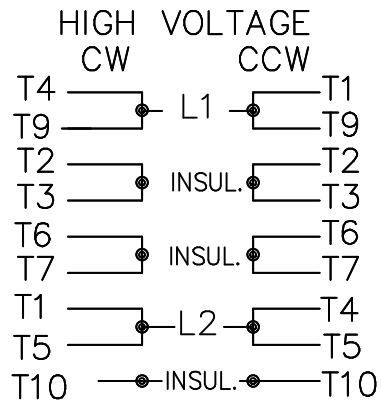
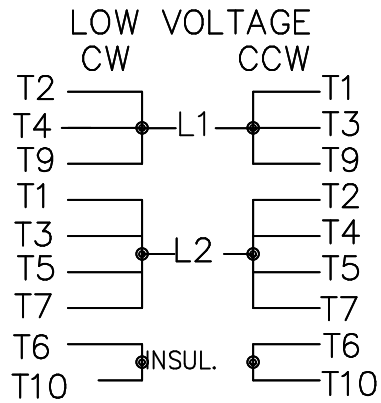
SS65665

8

THIS DRAWING IN DESIGN AND DETAIL IS OUR PROPERTY AND MUST NOT BE USED EXCEPT IN CONNECTION WITH OUR WORK ALL RIGHTS OF DESIGN AND INVENTION ARE RESERVED THIS IS AN ELECTRONICALLY GENERATED DOCUMENT - DO NOT SCALE THIS PRINT

RFP

DIST LB



VIEW OF TERMINAL END

			TOLERANCES UNLESS SPECIFIED			MARATHON ELECTRIC	DRAWN GK 09-24-1986		
			DEC.	INCHES			CHK	ML 09-24-1986	
			.X	± -		TITLE CONNECTION DIAGRAM	APPD	FG 09-24-1986	SCALE 1=1
			.XX	± -					REF
2	REDRAWN IN AUTOCAD	RWR 08-02-2004	.XXX	± -					
1	NEW DRAWING CN7664C	GK 11-06-1986	.XXXX	± -					
NO.	REVISION	BY & DATE	CHK	ANG	± -	FINISH	PREV		
THIS DRAWING IN DESIGN AND DETAIL IS OUR PROPERTY AND MUST NOT BE USED EXCEPT IN CONNECTION WITH OUR WORK ALL RIGHTS OF DESIGN AND INVENTION ARE RESERVED THIS IS AN ELECTRONICALLY GENERATED DOCUMENT - DO NOT SCALE THIS PRINT			RFP	CAD FILE EE7085FR			SIZE A	DRAWING NO. EE7085FR	PAGE 1 OF 1
			DIST LB						REV. 2