

PRODUCT INFORMATION PACKET

marathon®
Motors

Model No: 182TCDR7001

Catalog No: I103

3 HP General Purpose Motor, 1 phase, 3600 RPM, 115/208-230 V, 182T Frame, ODP
General Purpose Motors



Regal and Marathon are trademarks of Regal Rexnord Corporation or one of its affiliated companies.

©2021 Regal Rexnord Corporation, All Rights Reserved. MC017097E

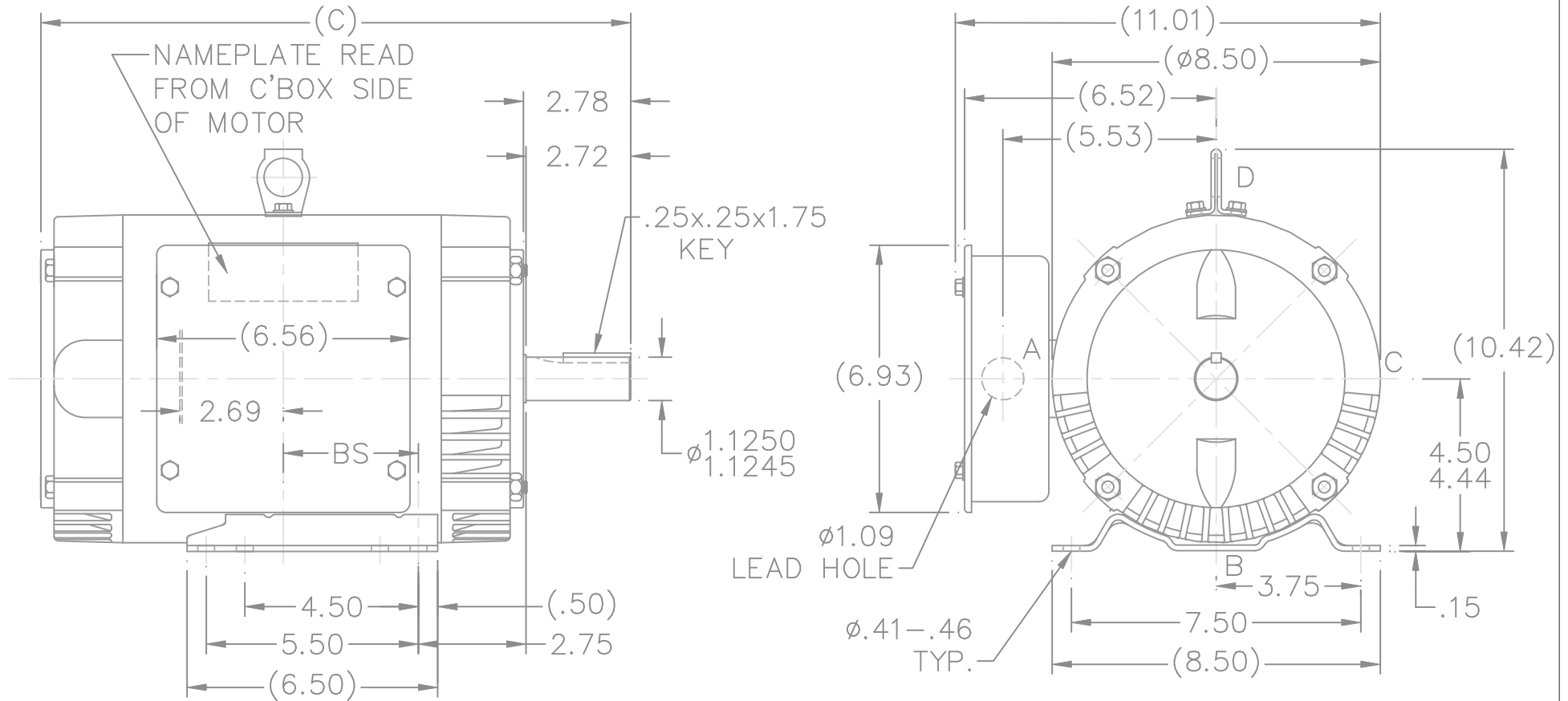
RegalRexnord

Nameplate Specifications

Output HP	3 Hp	Output KW	2.2 kW
Frequency	60 Hz	Voltage	115/208-230 V
Current	32.0/17.5-16.0 A	Speed	3460 rpm
Service Factor	1.15	Phase	1
Efficiency	74 %	Power Factor	78.7
Duty	Continuous	Insulation Class	B
Design Code	L	KVA Code	G
Frame	182T	Enclosure	Drip Proof
Thermal Protection	No	Ambient Temperature	40 °C
Drive End Bearing Size	6206	Opp Drive End Bearing Size	6203
UL	Recognized	CSA	Y
CE	Y	IP Code	22
Number of Speeds	1		

Technical Specifications

Electrical Type	Capacitor Start Induction Run	Starting Method	Across The Line
Poles	2	Rotation	Selective Counterclockwise
Resistance Main	0 Ohms	Mounting	Rigid Base
Motor Orientation	Shaft Up	Drive End Bearing	Ball
Opp Drive End Bearing	Ball	Frame Material	Rolled Steel
Shaft Type	T	Overall Length	13.29 in
Frame Length	6.25 in	Shaft Diameter	1.125 in
Shaft Extension	2.75 in	Assembly/Box Mounting	W8
Outline Drawing	A-SS65665-625	Connection Drawing	A-EE7085FP



DASH	FR.	C	BS		DASH	FR.	C	BS	
575	182T	12.79	2.25		675	184T	13.79	2.75	
625	182T	13.29	2.50		725	184T	14.29	3.00	
675	182T	13.79	2.75		775	184T	14.79	3.25	
725	182T	14.29	3.00		825	184T	15.29	3.50	
775	182T	14.79	3.25		875	184T	15.79	3.75	
825	182T	15.29	3.50		925	184T	16.29	4.00	

BOX CAN BE ROTATED IN 90° STEPS.

				TOLERANCES UNLESS SPECIFIED	
				DEC.	INCHES
8	UPDATED DRAWING	RJW 05-09-2007		.X	±.1
7	ADDED LIFT LUG CN34025	NJS 07-11-2001		.XX	±.03
6	REMOVED EYEBOLT	BLR 11-09-1995		.XXX	±.005
5	REDRAWN ON CAD – ADDED EYEBOLT	KL 06-29-1994		.XXXX	±.0005
NO.	REVISION	BY & DATE	CHK	ANG	±7’30”
THIS DRAWING IN DESIGN AND DETAIL IS OUR PROPERTY AND MUST NOT BE USED EXCEPT IN CONNECTION WITH OUR WORK ALL RIGHTS OF DESIGN AND INVENTION ARE RESERVED THIS IS AN ELECTRONICALLY GENERATED DOCUMENT – DO NOT SCALE THIS PRINT			RFP		
			DIST LB		



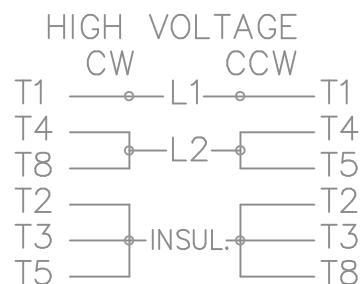
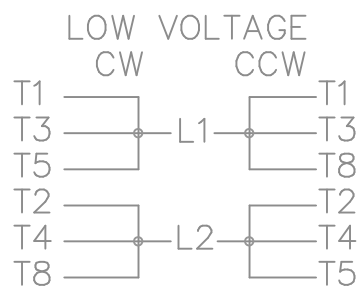
TITLE OUTLINE
180T FR. - BB - SCS - DR.PR.

MAT'L.

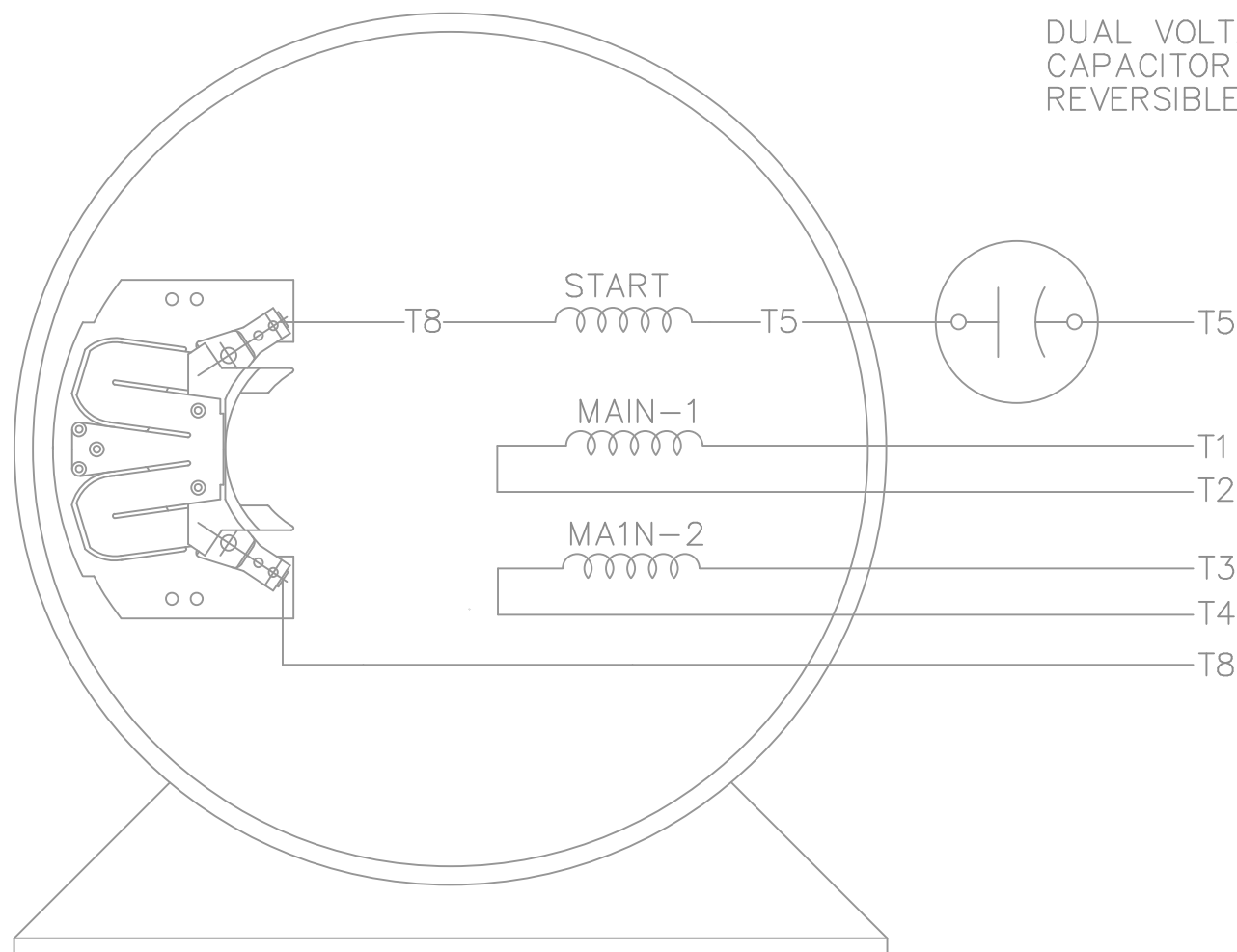
FINISH

CAD FILE SS65665


SIZE A DRAWING NO. SS65665 PAGE 8 OF 8 REV. 8



DUAL VOLTAGE
CAPACITOR START
REVERSIBLE



VIEW OF TERMINAL END

				TOLERANCES UNLESS SPECIFIED			DRAWN GK 09-24-1986			
				DEC.	INCHES		CHK FG 09-24-1986			
				.X	± -		APPD ML 09-24-1986			
				.XX	± -		SCALE 1=1			
2	REDRAWN IN AUTOCAD	RWR 08-02-2004		.XXX	± -		TITLE CONNECTION DIAGRAM	REF		
1	NEW DRAWING CN7664C	GK 12-15-1996		.XXXX	± -	MAT'L.	FMF			
NO.	REVISION	BY & DATE	CHK	ANG	± -	FINISH	PREV			
THIS DRAWING IN DESIGN AND DETAIL IS OUR PROPERTY AND MUST NOT BE USED EXCEPT IN CONNECTION WITH OUR WORK ALL RIGHTS OF DESIGN AND INVENTION ARE RESERVED THIS IS AN ELECTRONICALLY GENERATED DOCUMENT - DO NOT SCALE THIS PRINT			RFP		CAD FILE EE7085FP		SIZE	DRAWING NO.	PAGE 1 OF 1	REV.
			DIST LB				A	EE7085FP		2