

PRODUCT INFORMATION PACKET

marathon®
Motors

Model No: 180MTFC6511

Catalog No: R342A

Globetrotter® IEC Cast Iron Motor, 30 & 25 HP, 3 Ph, 60 & 50 Hz, 230/460 & 200/400 V,
3600 & 3000 RPM, 180M Frame, TEFC



Regal and Marathon are trademarks of Regal Rexnord Corporation or one of its affiliated companies.

©2023 Regal Rexnord Corporation, All Rights Reserved. MC017097E

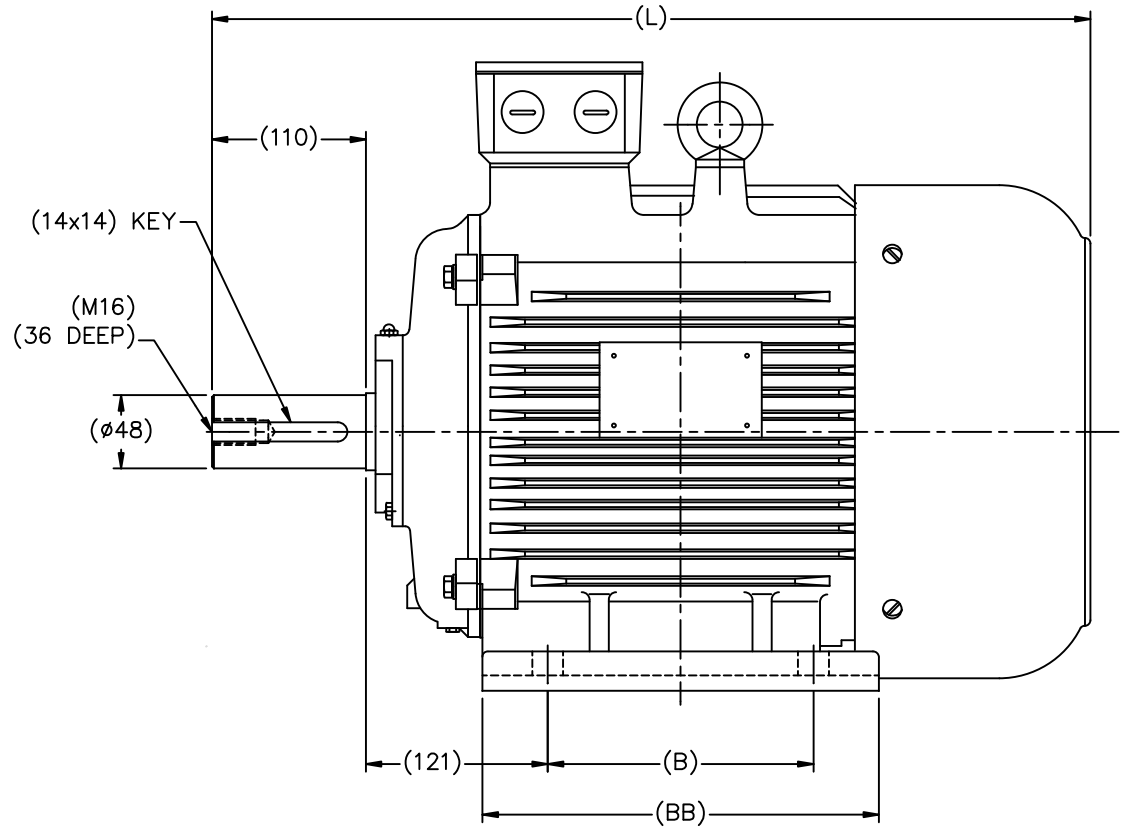
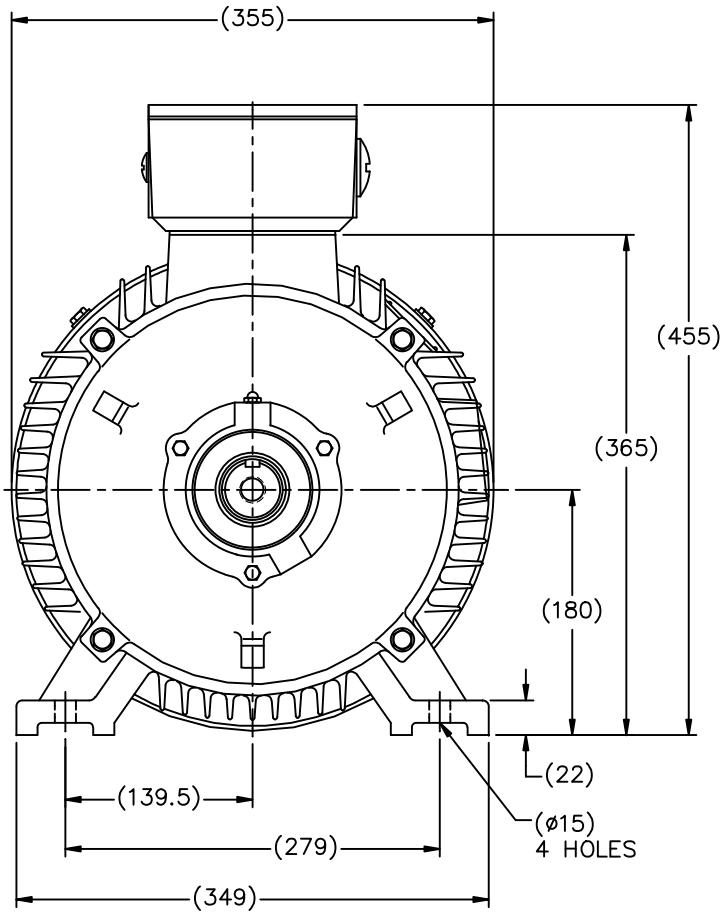
RegalRexnord

Nameplate Specifications

Phase	3	Output HP	30 & 25 Hp
Output KW	22.4 & 18.7 kW	Voltage	230/460 & 200/400 V
Speed	3550 & 2955 rpm	Service Factor	1.15 & 1.15
Frame	180M	Enclosure	Totally Enclosed Fan Cooled
Thermal Protection	No Protection	Efficiency	93 & 93 %
Ambient Temperature	40 °C	Frequency	60 & 50 Hz
Current	69/34.5 & 66/33 A	Power Factor	87
Duty	Continuous	Insulation Class	F
Design Code	B	KVA Code	G
Drive End Bearing Size	6211	Opp Drive End Bearing Size	6211
UL	No	CSA	Y
CE	Y	IP Code	54
Number of Speeds	1		

Technical Specifications

Electrical Type	Squirrel Cage Inverter Rated	Starting Method	Part Wdg Start & Wye Start Delta Run Or Inverter
Poles	2	Rotation	Reversible
Resistance Main	.244 Ohms	Mounting	Rigid Base
Motor Orientation	Horizontal	Drive End Bearing	Ball
Opp Drive End Bearing	Ball	Frame Material	Cast Iron
Shaft Type	IEC	Overall Length	26.77 in
Shaft Diameter	1.888 in	Shaft Extension	4.33 in
Assembly/Box Mounting	F3	Inverter Load	CONSTANT 2:1
Outline Drawing	SS622257	Connection Drawing	004172.03



(MAY NOT BE DRAWN TO SCALE)

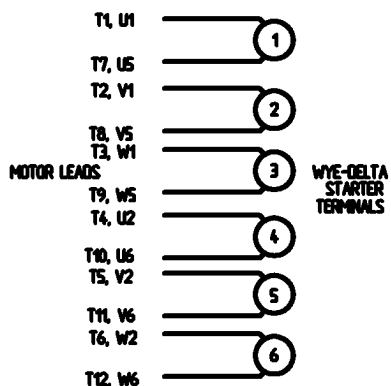
(DIMENSIONS ARE IN MILLIMETERS)

Cat.No	FRAME	B	BB	L
193324.60 193322.60	DF180M	241	311	680
193325.60 193320.60	DF180L	279	349	718

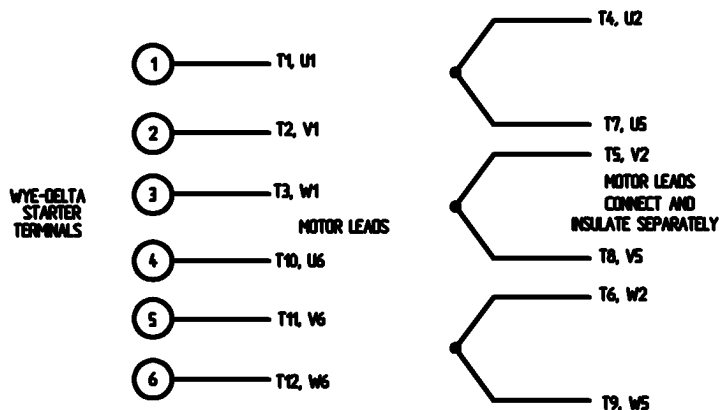
TOLERANCES UNLESS SPECIFIED		REGAL-BELOIT CORPORATION		DRAWN HLB 12-06-2010	
DEC.	METRIC	REGAL-BELOIT CORPORATION		CHK	DJK 12-17-2010
.X	±2.5	TITLE OUTLINE		APPD	SB 12-13-2010
.XX	±.76	DF180M,L-4,6		SCALE	1=18
.XXX	±.127	MAT'L		REF	
.XXXX	±.0127	FINISH		FMF	HEBEI
NO.	REVISION	BY & DATE	CHK	ANG	PREV
			RFP	12-22-2010	CAD FILE SS622257
THIS DRAWING IN DESIGN AND DETAIL IS OUR PROPERTY AND MUST NOT BE USED EXCEPT IN CONNECTION WITH OUR WORK ALL RIGHTS OF DESIGN AND INVENTION ARE RESERVED THIS IS AN ELECTRONICALLY GENERATED DOCUMENT - DO NOT SCALE THIS PRINT					
				SIZE	DRAWING NO. PAGE OF REV.
				B	SS622257

WYE - DELTA STARTING USEABLE ON 2,4 AND 6 POLE MOTORS.

LOW VOLTAGE CONNECTION

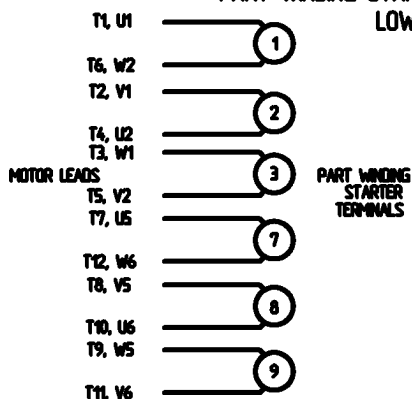


HIGH VOLTAGE CONNECTION



REFER TO THE WYE-DELTA STARTER CONNECTION INSTRUCTIONS FOR PROPER CONNECTION OF POWER LINES TO STARTER.

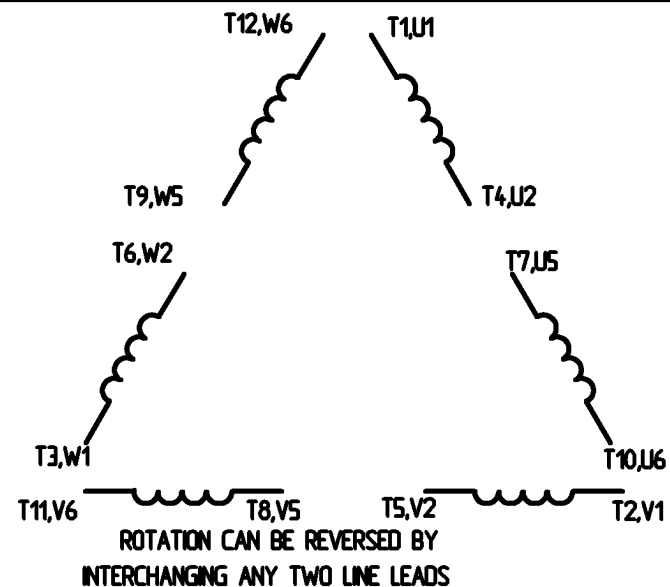
PART WINDING START USABLE ON 4 & 6 POLE MOTORS
LOW VOLTAGE CONNECTION ONLY



REFER TO THE PART WINDING STARTER INSTRUCTIONS FOR PROPER CONNECTION OF POWER LINES TO STARTER.

REFER TO THE CUTLER - HAMMER OR EQUIV. FOR PROPER SELECTION OF OVERLOAD HEATER COILS.

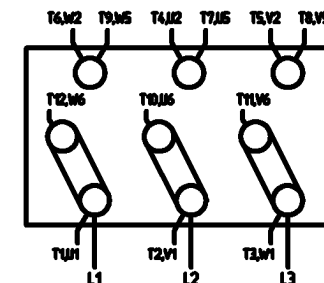
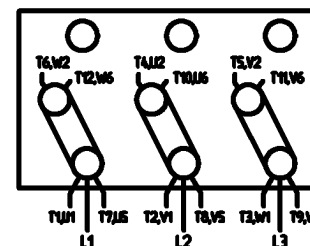
LINE LEADS



12 LEAD DELTA CONNECTION ACROSS THE LINE START
(FOR Y START DELTA RUN, REMOVE THE JUMPERS)

LOW VOLTAGE
MUST BE REWIRED
AS SHOWN

HIGH VOLTAGE
FACTORY WIRED FOR HIGH
VOLTAGE AS SHOWN



				TOLERANCES UNLESS SPECIFIED		<p>ELECTRIC MOTORS GEARMOTORS AND DRIVES</p>	DRAWN CW 08/28/02 CHK APPD SCALE 1:1 REF FMF PREV
				DEC.	INCHES		TITLE DELTA - WYE CONNECTION DIAGRAM IEC CAST IRON MOTORS
				X	+ .1		
				XX	+ .01		
				XXX	+ .005		
				XXXX	+ .0005	MAT'L	
NO.	REVISION	BY & DATE	CHK	ANG	+ 1/2°	FINISH	PREV
THIS DRAWING IN DESIGN AND DETAIL IS OUR PROPERTY AND MUST NOT BE USED EXCEPT IN CONNECTION WITH OUR WORK. ALL RIGHTS OF DESIGN AND INVENTION ARE RESERVED. THIS IS AN ELECTRONICALLY GENERATED DOCUMENT - DO NOT SCALE THIS PRINT.				RFP	CAD FILE	00417203	SIZE A
				DST			DRAWING NO. 004172-03
							REV.

ERROR: syntaxerror
OFFENDING COMMAND: --nostringval--

STACK:

/CB
-dictionary-
/Pscript_WinNT_Compat
-dictionary-

Data Sheet

Date: 6/19/2017

180MTC6511

Customer: _____
 Attention: _____
 Submitted by: FAREEDA DUDEKULA



Submittal

Data @ 460 V

Motor Load Data

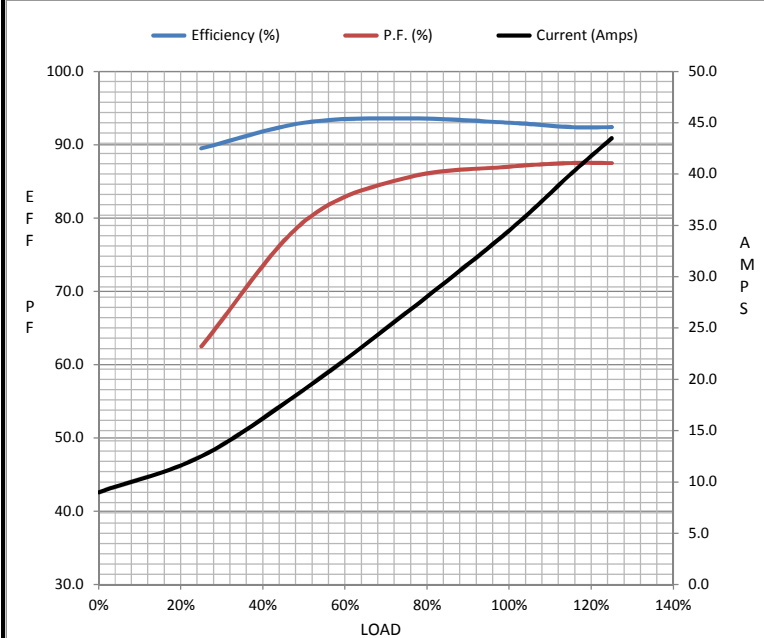
Load	0%	25%	50%	75%	100%	115%	125%	LR	
Current (Amps)	9.0	12.5	19.0	26.5	34.5	40.0	43.5	211	
Torque (ft-lb)	0.00	11.0	22.0	33.2	44.5	51.2	55.5	89.5	
RPM	3600	3585	3575	3565	3550	3,540	3530	0	
Efficiency (%)		89.5	93.0	93.6	93.0	92.4	92.4		
P.F. (%)	7.5	62.5	79.5	85.5	87.0	87.5	87.5	39.0	

Motor Speed Data

	LR	Pull-Up	BD	Rated	Idle
Speed (RPM)	0	1000	3355	3550	3600
Current (Amps)	211	200	121	34.5	9.0
Torque (ft-lb)	89.5	72.0	119	44.5	0.00

Information Block

HP	30.0			
Sync. RPM	3600			
Frame	180			
Enclosure	TEFC			
Construction	TFC			
Voltage	30/460#200/401V			
Frequency	60 Hz			
Design	B			
LR Code letter	G			
Service Factor	1.15			
Temp Rise @ FL	60 °C			
Duty	CONT			
Ambient	40 °C			
Elevation	1,000 feet			
Rotor/Shaft wk ²	0.00 Lb-Ft ²			
Ref Wdg	T14502020 NONE			
Sound Pressure @ 1M	64 dBA			
VFD Rating	CONSTANT 2:1			
Outline Dwg	SS622257			
Conn. Diag	004172.03			
Additional Specifications:				
0				
0				
EQUIV CKT (OHMS / PHASE)				
R1	R2	X1	X2	Xm
0.0000	0.0000	0.0000	0.0000	0.0000



Speed - Torque Curve

