

PRODUCT INFORMATION PACKET

Model No: 143TTFBD36056
Catalog No: 143TTFBD36056
1,1765,TEFC,143T,3/60/230/460

Regal and are trademarks of Regal Rexnord Corporation or one of its affiliated companies.
©2022 Regal Rexnord Corporation, All Rights Reserved. MC017097E

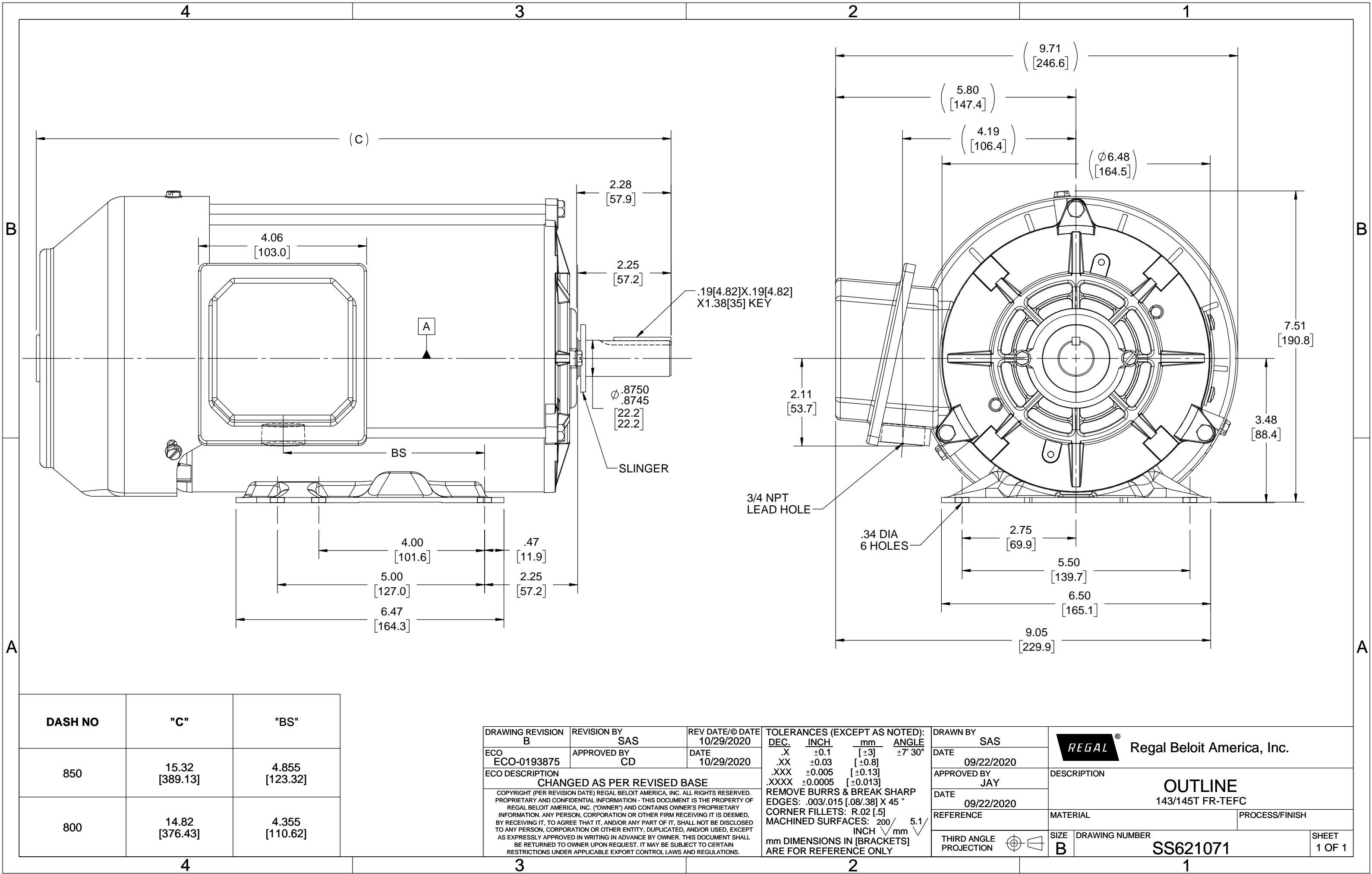


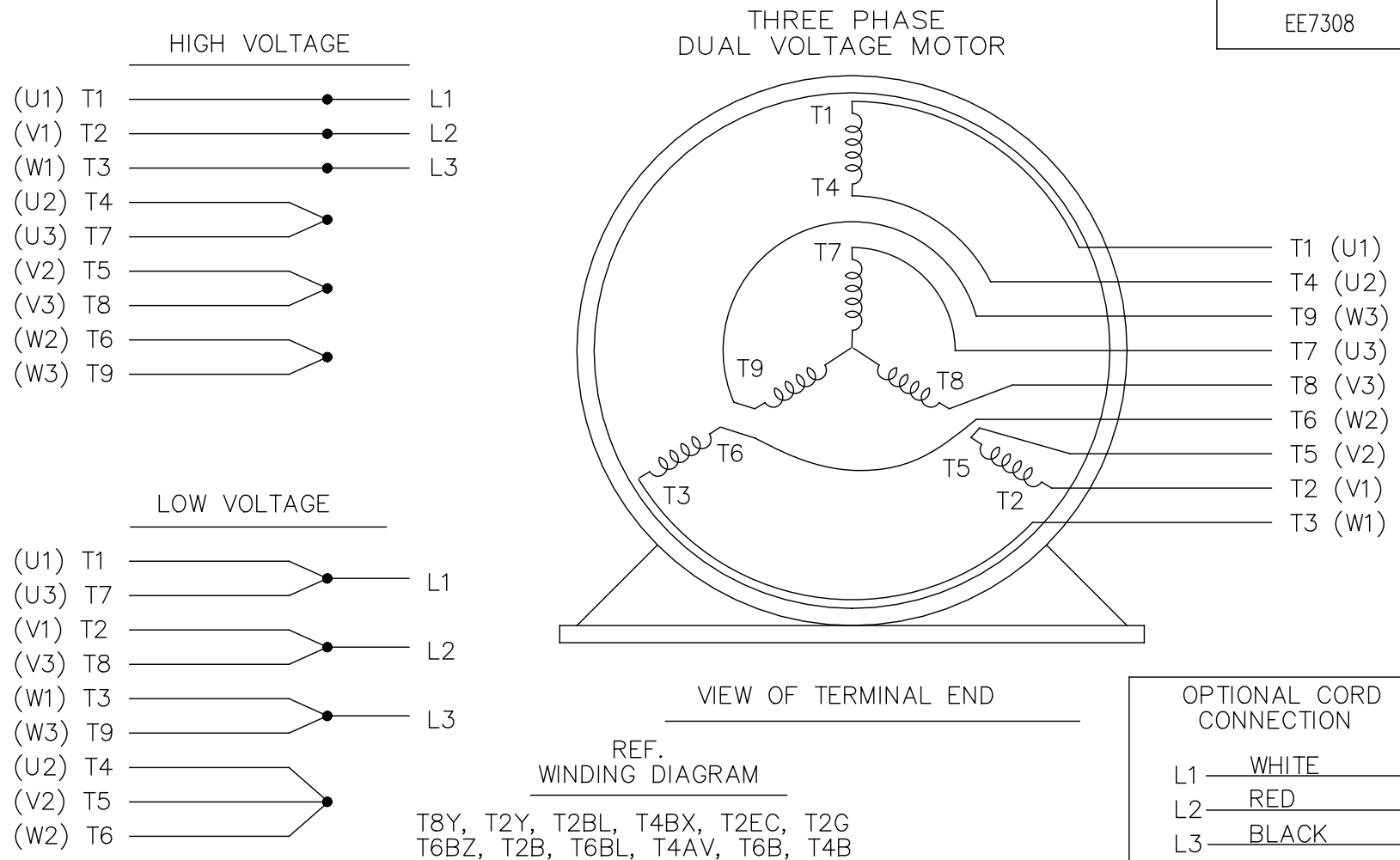
Nameplate Specifications


Technical Specifications

Connection Drawing	A-EE7308	Outline Drawing	A-SS621071-800
--------------------	----------	-----------------	----------------

This is an uncontrolled document once printed or downloaded and is subject to change without notice. Date Created:08/09/2022





				TOLERANCES UNLESS SPECIFIED		 Regal Beloit America, Inc.	DRAWN RM 11/20/1990	
5	CHG TO REGAL LOGO	SL 09/10/2015	AB	DEC.	INCHES		CHK ML 11/21/1990	
4	REVISED IEC NOTATIONS	MSG 11/15/2011	CMN	.X	±.1		APPD SAS 04/24/2003	
3	ADDED IEC NOTATIONS... (U1), (V1) ETC. MU95194	MSG 5/10/2010	MJS	.XX	±.02		TITLE CONNECTION DIAGRAM 3ø – DUAL VOLTAGE MOTOR	SCALE 1=1
2	ADDED THE OPTIONAL CORD CONNECTION MU46318	RDH 04/24/2003	DRS	.XXX	±.005		REF	
1	REDRAWN	RM 11/20/1990		.XXXX	±.0005	MAT'L.	FMF	
NO.	REVISION	BY & DATE	CHK	ANG	±7'30"	FINISH	PREV	
THIS DRAWING IN DESIGN AND DETAIL IS OUR PROPERTY AND MUST NOT BE USED EXCEPT IN CONNECTION WITH OUR WORK ALL RIGHTS OF DESIGN AND INVENTION ARE RESERVED THIS IS AN ELECTRONICALLY GENERATED DOCUMENT – DO NOT SCALE THIS PRINT			RFP		CAD FILE ee7308	SIZE	DRAWING NO. PAGE OF	REV.
			DIST WP			A	EE7308	5



P.O. BOX 8003
WAUSAU, WI 54401-8003
PH. 715-675-3311

DATA VOLTS: 460

CERTIFICATION DATA SHEET

CUSTOMER: _____
ORDER #: _____
CONN. DIAGRAM: A-EE7308
OUTLINE: A-SS621071-800
WINDING: HAT4005 FR 1
SPEED: _____

CUSTOMER P.O. #: _____
REFERENCE MODEL #: 143TTFBD36056
CAT #: N/A
CUSTOMER PART #: _____
MOUNTING: F1/F2 CAPABLE

TYPICAL MOTOR PERFORMANCE DATA

HP	KW	SYNC RPM	FL RPM	FRAME	ENCLOSURE	TYPE	KVA CODE	DESIGN
1	0.75	1800	1755	143T	TEFC	TFR	N	B

PH	HZ	VOLTS	AMPS	START TYPE	DUTY	INSL	S.F.	AMB	ELEV.
3	60/50	208-230/460#190/380	3.2-3/1.5&3/1.5	ACROSS THE LINE	CONT	F	1.15	40	3300

F.L. EFF	85.5	3/4 LD EFF	84.0	1/2 LD EFF	78.5	GTD EFF	ELECT. TYPE
F.L. PF	74.0	3/4 LD PF	65.0	1/2 LD PF	52.0	84.0	SQ CAGE IND RUN

F.L. TORQUE	LR AMPS @ 460 V	L.R. TORQUE	B.D. TORQUE	F.L. RISE (° C)
3.0 LB-FT	15.0	11.0 LB-FT 367%	13.0 LB-FT 433%	65

SOUND PRESSURE @ 3 FT.	SOUND	POWER	ROTOR WK²	MAX. LOAD WK²	SAFE STALL TIME	STARTS/HOUR	APROX.	MOTOR WGT
62 dBA	71 dBA	0.10	LB-FT²	7	15 SEC.	3	40	LB.

*** SUPPLEMENTAL INFORMATION ***

DE BRACKET TYPE	ODE BRACKET TYPE	MOUNT TYPE	MOTOR ORIENTATION	SEVERE DUTY	HAZARDOUS LOCATION	DRIP COVER	SCREENS	PAINT
STANDARD	BRAKE	BOLT-ON	HORIZONTAL	NO	NONE	NO	NONE	BLUE (ENAMEL)

BEARINGS	GREASE	SHAFT TYPE	SPECIAL DE	SPECIAL ODE	SHAFT	MATERIAL	FRAME MATERIAL
DE ODE							
BALL BALL	POLYREX EM	T	NONE	NONE	1045 HOT ROLLED (C-204)		ROLLED STEEL
6205 6205							

THERMOSTATS	PROTECTORS	WDG RTD's	BRG RTD's	THERMISTORS	CONTROL	SPACE	HEATERS
NONE	NOT	NONE	NONE	NONE	FALSE		NA

R1 (ohms/ph)	R2 (ohms/ph)	X1 (ohms/ph)	X2 (ohms/ph)	Xm (ohms/ph)	VIBRATION (in/sec)	FLOAT
8.366	5.672	11.202	9.784	270.838	0.150	ODE

* N O T E S *		INVERTER TORQUE: NONE INV. HP SPEED RANGE: NONE
		ENCODER: NONE NONE NONE NONE PPR
PREPARED BY: _____ DATE: 7/26/2022		BRAKE: STEARNS 56,000 NONE FT-LB: 10 VOLTAGE: NONE HZ: UL: V - LI,ME-INS,CONST UL REC

FORM: 3531 REV_4 2/27/06

Data Sheet

Date: 8/1/2022
 Customer: _____
 Attention: _____
 Submitted by: _____



143TTFBD36056

102401

FAN

Submittal

Data @ 460 V

Motor Load Data

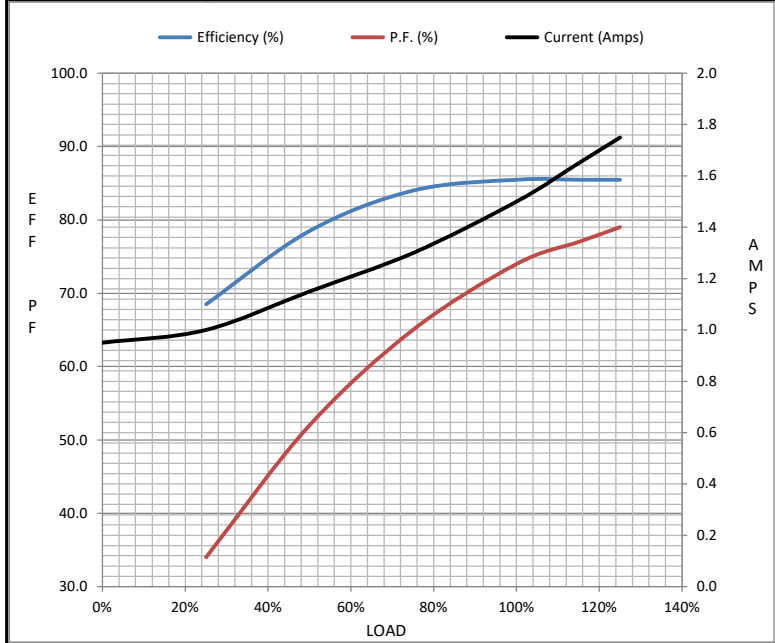
Load	0%	25%	50%	75%	100%	115%	125%	LR	
Current (Amps)	0.95	1.00	1.15	1.30	1.50	1.65	1.75	15.0	
Torque (ft-lb)	0.00	0.70	1.50	2.20	3.0	3.4	3.7	11.0	
RPM	1800	1785	1775	1765	1755	1,745	1740	0	
Efficiency (%)		68.5	78.5	84.0	85.5	85.5	85.5		
P.F. (%)	10.0	34.0	52.0	65.0	74.0	77.0	79.0	63.0	

Motor Speed Data

	LR	Pull-Up	BD	Rated	Idle
Speed (RPM)	0	900	1550	1755	1800
Current (Amps)	15.0	13.5	9.0	1.50	0.95
Torque (ft-lb)	11.0	8.8	13.0	3.0	0.00

Information Block

HP	1.0			
Sync. RPM	1800			
Frame	145			
Enclosure	TEFC			
Construction	TFR			
Voltage	208-230/460#190/380 V			
Frequency	60 Hz			
Design	B			
LR Code letter	J			
Service Factor	1.15			
Temp Rise @ FL	65 ° C			
Duty	CONT			
Ambient	40 ° C			
Elevation	1,000 feet			
Rotor/Shaft wk²	0.10 Lb-Ft²			
Ref Wdg	HAT4005 FR			
Sound Pressure @ 1M	62 dBA			
VFD Rating	NONE			
Outline Dwg	A-SS621071-800			
Conn. Diag	A-EE7308			
Additional Specifications:				
0				
0				
EQUIV CKT (OHMS / PHASE)				
R1	R2	X1	X2	Xm
8.3660	5.6720	11.2020	9.7840	270.8380



Speed -Torque Curve

