

# PRODUCT INFORMATION PACKET



Model No: S11044-8  
Catalog No: S11044-8  
SLINGER,284T-286T

Regal and Marathon are trademarks of Regal Rexnord Corporation or one of its affiliated companies.  
©2025 Regal Rexnord Corporation, All Rights Reserved. MC017097E



## Nameplate Specifications

## Technical Specifications

This is an uncontrolled document once printed or downloaded and is subject to change without notice. Date Created:04/04/2025

**S 11044**

STENCIL PART NO. WITH  
PROPER DASH NUMBER

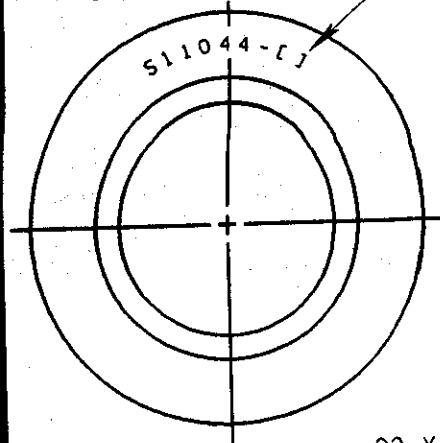
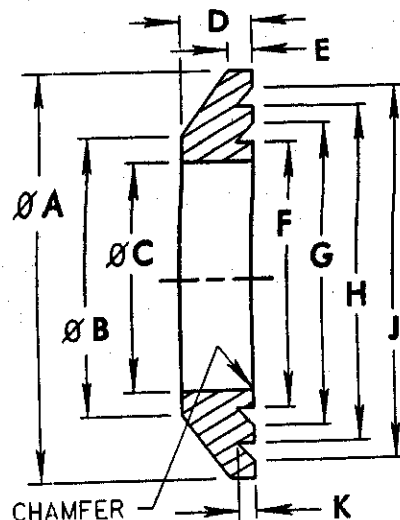


FIG. 1



.02 X 45° CHAMFER

STENCIL PART NO. WITH  
PROPER DASH NUMBER

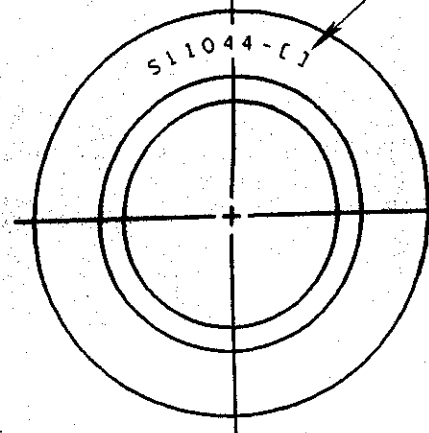
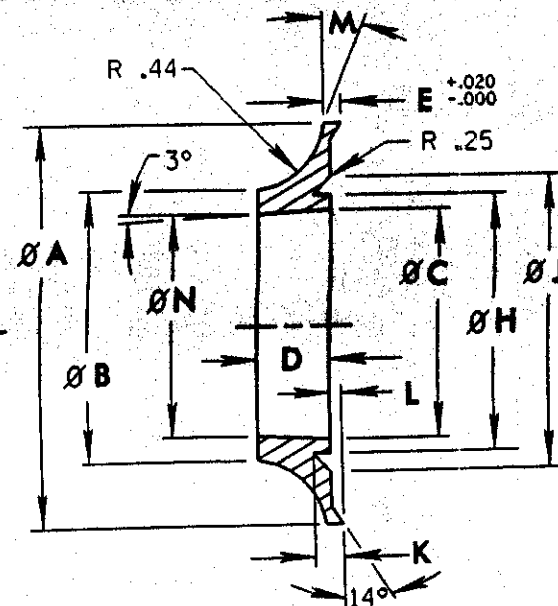


FIG. 2



S11044-15	250T	2	3.00	1.67		.25	.056			1.52	1.77	.160	.100	21°	1.287/1.277	
S11044-14	250T	2	3.20	2.13		.38	.056			1.88	2.06	.160	.100	25°	1.668/1.658	
S11044-13	210T	2	2.80	1.93		.25	.056			1.68	1.87	.160	.100	21°	1.483/1.473	
S11044-12	180T	2	2.42	1.54		.25	.056			1.34	1.53	.135	.075	21°	1.099/1.089	
S11044-11	140T	2	2.00	1.26		.25	.056			1.12	1.25	.115	.075	29°	.903/.893	
S11044-10	440T	2	4.80	3.95		.38	.056			3.59	3.78	.110	.050	25°	3.364/3.354	
S11044-9	LN-5	1	2.16	1.88	.881/.876	.22	.125	1.44	1.62	1.81	2.00	.062				
S11044-8	280T,320U	2	3.12	2.23		.38	.056			2.05	2.24	.110	.050	25°	1.848/1.838	
S11044-7	400T,440U	2	4.09	3.40		.32	.056			3.01	3.20	.110	.050	25°	2.782/2.772	
S11044-6	360T,400U	2	3.50	2.80		.25	.056			2.67	2.86	.110	.050	25°	2.447/2.437	N.A.A.
S11044-5	320T,320U,360U	2	3.25	2.47		.20	.056			2.28	2.47	.080	.050	25°	2.071/2.061	
S11044-4	280U	1	2.62 <sup>+.000</sup> <sub>-.06</sub>	2.00	1.707/1.701	.44	.125	1.78	2.06	2.25	2.44	.062				
S11044-3	250U	1	2.47	1.75	1.323/1.317	.38	.125	1.53	1.78	2.00	2.25	.062				
S11044-2	210U	1	2.00	1.38	1.126/1.120	.38	.125	1.34	1.53	1.72	1.91	.062				
S11044-1	180U	1	1.59	1.12	.930/.926	.28 <sup>+.00</sup> <sub>-.02</sub>	.125	1.12	1.25	1.38	1.50	.047				
PART NO.	TYPE	FIG.	A	B	C	D	E	F	G	H	J	K	L	M	N	NOTES

NOTES:

.010 MAXIMUM FLASH  
PERMISSIBLE IN BORE

MATEIAL: NITRILE

NOTES PER TABLE:  
N.A.A. FOR PARTS ORDERS  
SEND T15183-12.

THIS SHEET CONTAINS PROPRIETARY INFORMATION OWNED BY THE LINCOLN ELECTRIC CO. AND IS NOT TO BE REPRODUCED, DISCLOSED OR USED WITHOUT THE EXPRESS PERMISSION OF THE LINCOLN ELECTRIC CO.

UNLESS OTHERWISE SPECIFIED TOLERANCE  
ON HOLE SIZES PER B2054  
ON 2 PLACE DECIMALS IS  $\pm .02$   
ON 3 PLACE DECIMALS IS  $\pm .002$   
ON ALL ANGLES IS  $\pm .5$  OF A DEGREE  
MATERIAL TOLERANCE ("V") TO AGREE  
WITH PUBLISHED STANDARDS.

Chg. Sh. No.			
6-17-83A			
7-8-83L			
6-27-97WA			

THE LINCOLN ELECTRIC CO. EQUIP.  
CLEVELAND, OHIO U.S.A. TYPE

NEMA MOTORS

SLINGER

SCALE NONE DATE 11-7-86

SUBJECT

DR FL 11-7-86 CHK TJP

SUPD'D 11-7-86

SER. NO. S 11044