

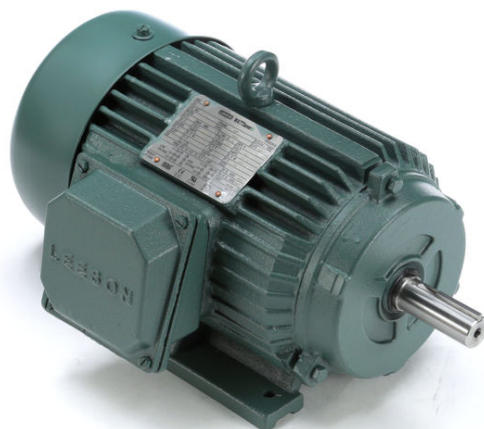
PRODUCT INFORMATION PACKET



Model No: 171650.00

Catalog No: 171650.00

****OBSOLETE, REPLACED BY 145TTFC6080**** 1 HP 1200 575 TEFC 145T PREM EFF
General Purpose Motors



Regal and Leeson are trademarks of Regal Rexnord Corporation or one of its affiliated companies.
©2021 Regal Rexnord Corporation, All Rights Reserved. MC017097E





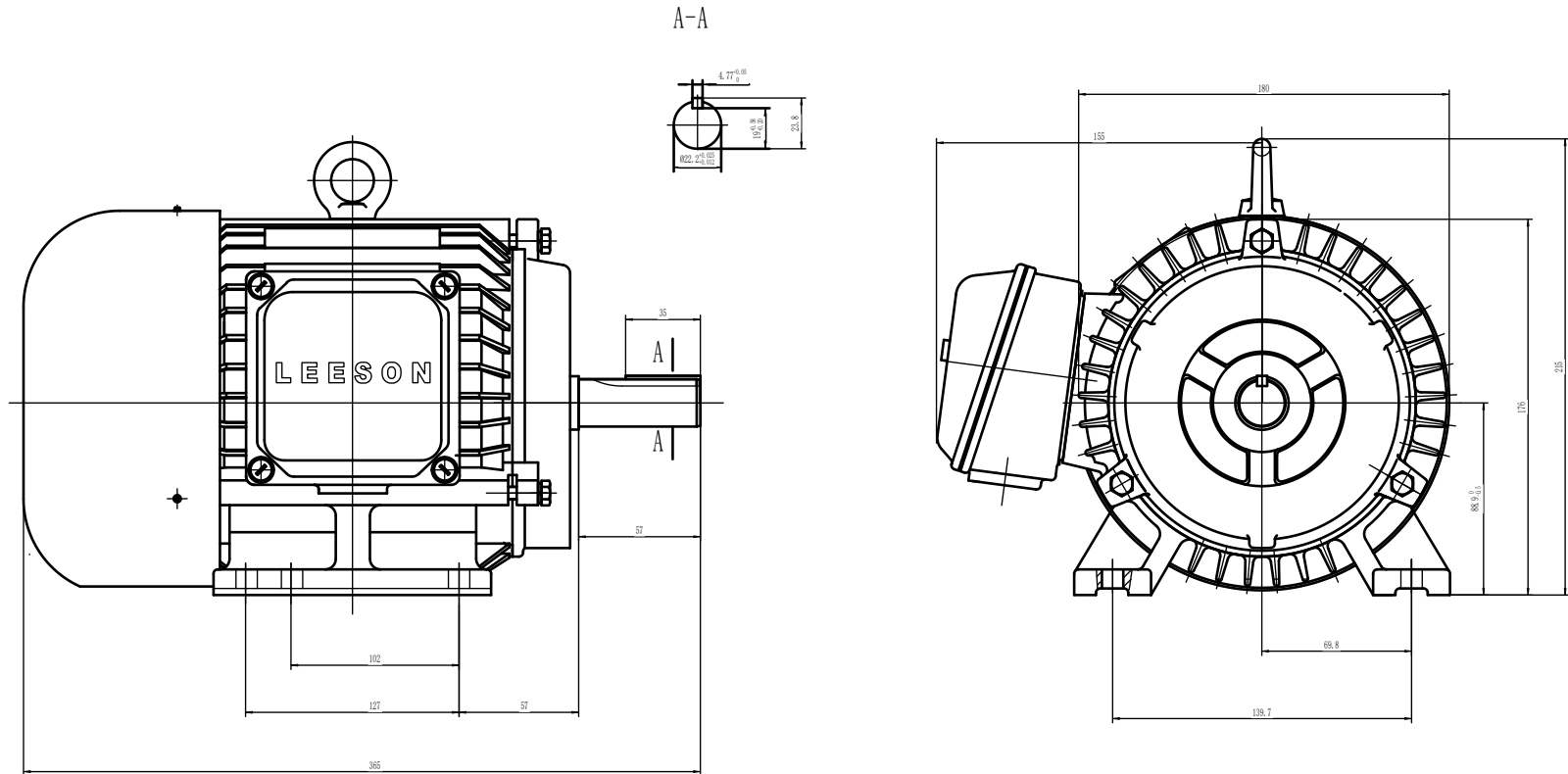
Nameplate Specifications

Output HP	1 Hp	Output KW	0.75 kW
Frequency	60 Hz	Voltage	575 V
Current	1.2 A	Speed	1160 rpm
Service Factor	1.15	Phase	3
Efficiency	81.5 %	Power Factor	72
Duty	Continuous	Insulation Class	F
Design Code	B	KVA Code	N
Frame	145T	Enclosure	Totally Enclosed Fan Cooled
Thermal Protection	No	Ambient Temperature	40 °C
Drive End Bearing Size	6205	Opp Drive End Bearing Size	6205
UL	Recognized	CSA	Y
CE	Y	IP Code	43
Number of Speeds	1		


Technical Specifications

Electrical Type	Squirrel Cage Induction Run	Starting Method	Across The Line
Poles	6	Rotation	Reversible
Resistance Main	17.926 Ohms	Mounting	Rigid Base
Motor Orientation	Horizontal	Drive End Bearing	Ball
Opp Drive End Bearing	Ball	Frame Material	Cast Iron
Shaft Type	T	Overall Length	12.48 in
Shaft Diameter	0.875 in	Shaft Extension	2.25 in
Assembly/Box Mounting	F1/F2 CAPABLE		
Connection Drawing	005102.01	Outline Drawing	SS622223LE

SS622223LE

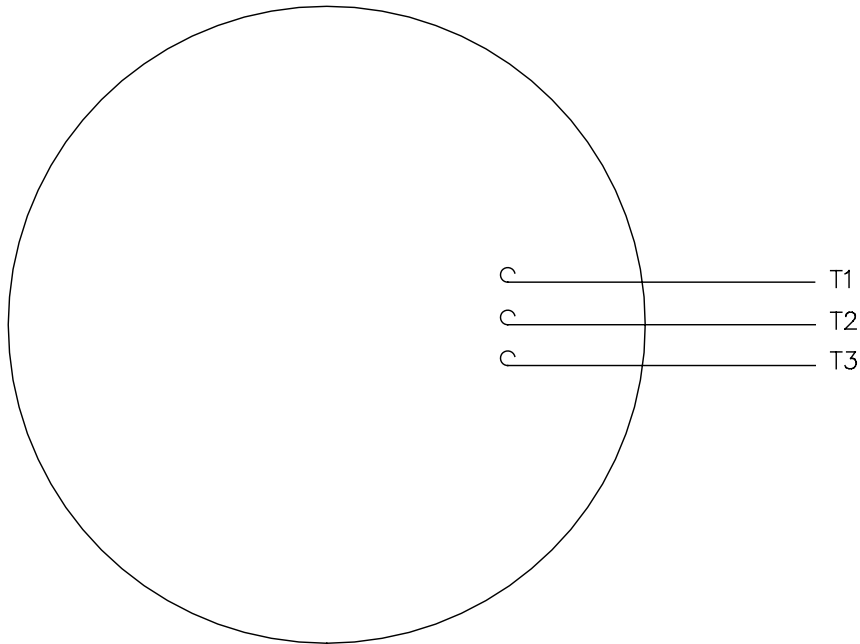


(DRAWING MAY NOT BE TO SCALE)

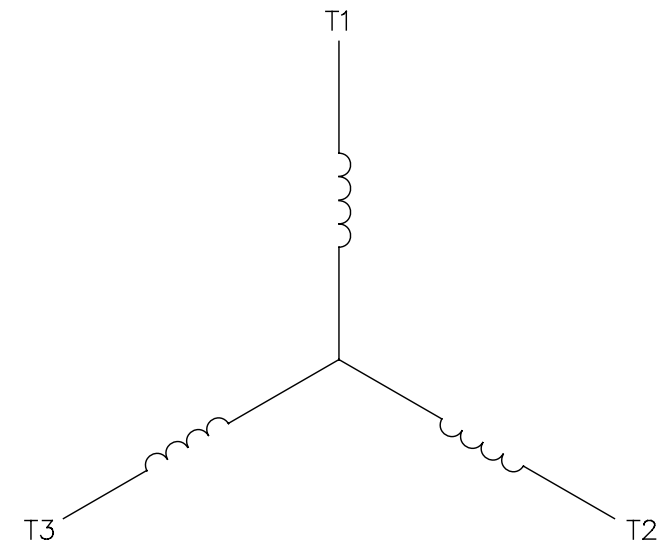
				TOLERANCES UNLESS SPECIFIED		 ELECTRIC MOTORS GEARMOTORS AND DRIVES	DRAWN
				DEC.	INCHES		
				.X	±.1	TITLE OUTLINE N140T - 4 - W2 - HEBEI	CHK
				.XX	±.03		APPD
				.XXX	±.005		SCALE
C	UPDATED MOTOR GEOMETRY ECO-0172391	WGJ 06-21-2019		.XXXX	±.0005	MAT'L	REF
NO.	REVISION	BY & DATE	CHK	ANG	±7'30"	FINISH	PREV
THIS DRAWING IN DESIGN AND DETAIL IS OUR PROPERTY AND MUST NOT BE USED EXCEPT IN CONNECTION WITH OUR WORK ALL RIGHTS OF DESIGN AND INVENTION ARE RESERVED THIS IS AN ELECTRONICALLY GENERATED DOCUMENT - DO NOT SCALE THIS PRINT				RFP	CAD FILE ss622223LE	SIZE B	DRAWING NO. SS622223LE
				DIST			PAGE OF C

005102-01


VIEW FROM OUTSIDE OF MOTOR AT SWITCH END.



LINE LEADS

CONNECT LEADS AS FOLLOWS
FOR FOUR CONDUCTOR CORD ()

CORD	L1 (RED)	L2 (WHITE)	L3 (BLACK)	(GREEN)
MOTOR	T1	T2	T3	GROUND

				TOLERANCES UNLESS SPECIFIED		 Regal Beloit America, Inc.	DRAWN			JRW 9/11/75			
				DEC.	INCHES		CHK						
				.X	±.1		APPD				JCW 9/11/75		
08	UPDATED TO REGAL LOGO	SAJ 06/26/15	AJY	.XX	±.01	TITLE					EXTERNAL WIRING DIAGRAM	SCALE	1=1
07	UPDATED TO CURRENT STANDARDS	DBT 5/30/97		.XXX	±.005						TYPE "T" W/O PROTECTOR		
06	REDRAWN ON CAD; ADDED DECAL NUMBER	SAW 1/24/95		.XXXX	±.0005	MAT'L.					DECAL - 004169	FMF	6T17FB7
NO.	REVISION	BY & DATE	CHK	ANG	±1/2"	FINISH					PREV		
THIS DRAWING IN DESIGN AND DETAIL IS OUR PROPERTY AND MUST NOT BE USED EXCEPT IN CONNECTION WITH OUR WORK ALL RIGHTS OF DESIGN AND INVENTION ARE RESERVED THIS IS AN ELECTRONICALLY GENERATED DOCUMENT - DO NOT SCALE THIS PRINT			RFP		5/1/02	CAD FILE			00510201	SIZE A	DRAWING NO.		REV. 08
			DIST		BRF-NLV							005102-01	