

# PRODUCT INFORMATION PACKET



Model No: 171640.60

Catalog No: 171640.60

WATTSaver® General Purpose Motor, 1 & 0.75 HP, 3 Ph, 60 & 50 Hz, 230/460 & 190/380 V,  
1800 & 1500 RPM, 145T Frame, TEFC



Regal and Leeson are trademarks of Regal Rexnord Corporation or one of its affiliated companies.

©2023 Regal Rexnord Corporation, All Rights Reserved. MC017097E



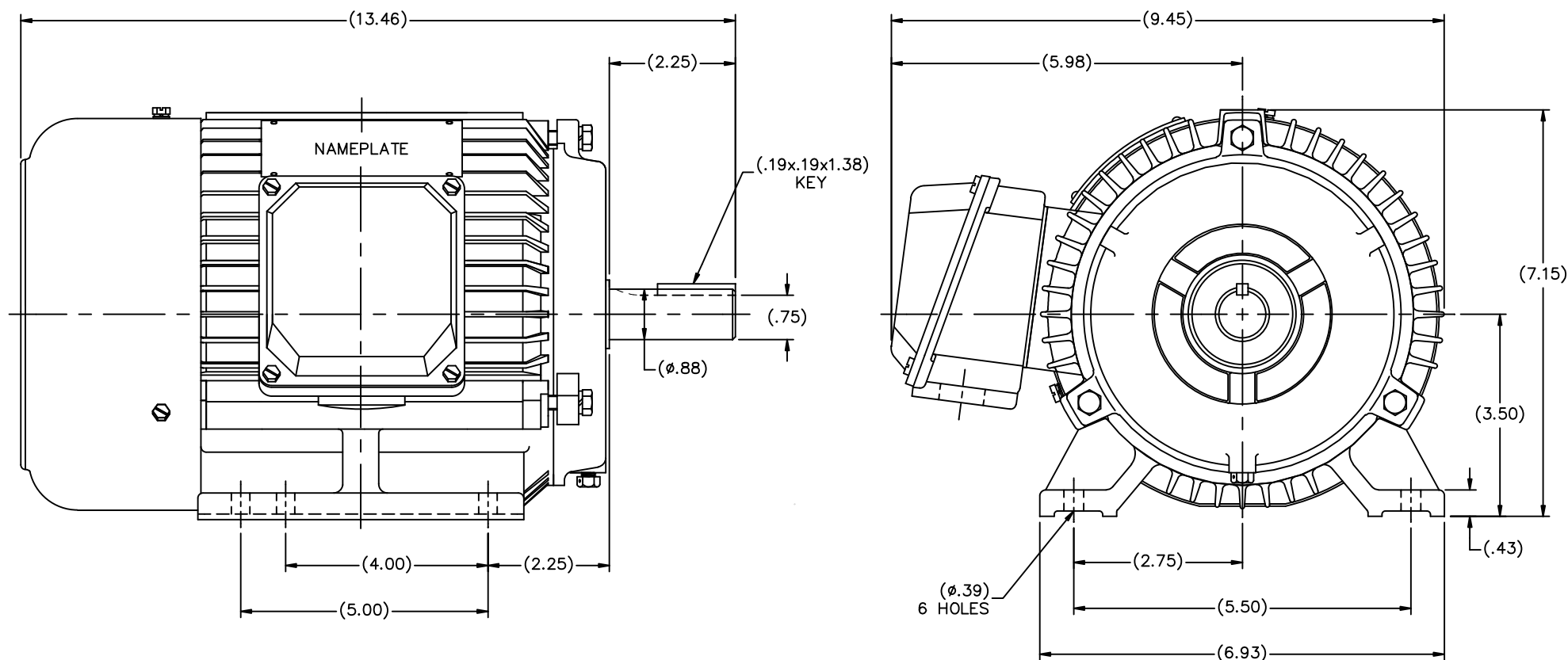


## Nameplate Specifications


Phase	3	Output HP	1 & 0.75 Hp
Output KW	0.75 & 0.56 kW	Voltage	230/460 & 190/380 V
Speed	1755 & 1460 rpm	Service Factor	1.15 & 1.0
Frame	145T	Enclosure	Totally Enclosed Fan Cooled
Thermal Protection	No Protection	Efficiency	85.5 & 85.5 %
Ambient Temperature	40 °C	Frequency	60 & 50 Hz
Current	3.2/1.6 & 3/1.5 A	Power Factor	67
Duty	Continuous	Insulation Class	F
Design Code	B	KVA Code	L
Drive End Bearing Size	6205	Opp Drive End Bearing Size	6205
UL	Recognized	CSA	Y
CE	Y	IP Code	43
Number of Speeds	1		

## Technical Specifications

Electrical Type	Squirrel Cage Inverter Rated	Starting Method	Line Or Inverter
Poles	4	Rotation	Reversible
Mounting	Rigid Base	Motor Orientation	Horizontal
Drive End Bearing	Ball	Opp Drive End Bearing	Ball
Frame Material	Cast Iron	Shaft Type	T
Overall Length	13.46 in	Shaft Diameter	0.875 in
Shaft Extension	2.25 in	Assembly/Box Mounting	F1/F2 CAPABLE
Inverter Load	CONSTANT 10:1		
Outline Drawing	SS622146	Connection Drawing	005010.01



(DRAWING MAY NOT BE TO SCALE)

				TOLERANCES UNLESS SPECIFIED		 <b>REGAL-BELOIT CORPORATION</b>	DRAWN MSG 06-28-2006		
				DEC.	INCHES		CHK	ML	06-28-2006
				.X	±.1	<b>TITLE OUTLINE</b> <b>N140T-4G - STD. BRKT</b>	APPD	SB	06-28-2006
				.XX	±.03		SCALE	5=8	
				.XXX	±.005		REF		
				.XXXX	±.0005		FMF	MU75330	
01	CHANGE CO FROM MARATHON TO RBC	ISAAC 10-3802	TF 10/5/2010	CHK	ANG	±7°30"	FINISH	PREV	
NO. REVISION				BY & DATE		RFP 09-25-2006		SIZE	DRAWING NO. PAGE OF REV.
						CAD FILE SS622146		B	SS622146 01
						DIST MAR-WA-WP			

THIS DRAWING IN DESIGN AND DETAIL IS OUR PROPERTY AND MUST NOT BE USED EXCEPT  
IN CONNECTION WITH OUR WORK ALL RIGHTS OF DESIGN AND INVENTION ARE RESERVED  
THIS IS AN ELECTRONICALLY GENERATED DOCUMENT - DO NOT SCALE THIS PRINT

005010-01

VIEW FROM OUTSIDE OF MOTOR AT SWITCH END.



				TOLERANCES UNLESS SPECIFIED		 <b>Regal Beloit America, Inc.</b>			DRAWN RDW 04/12/02			
				DEC.	INCHES				CHK			
				.X	±.1				APPD			
				.XX	±.01				SCALE 1=1			
				.XXX	±.005	TITLE EXTERNAL WIRING DIAGRAM 3 PHASE W/O PROTECTOR			REF FIG.2-51			
A	UPDATED TO REGAL LOGO	SAJ 06/26/15	AJY	.XXXX	±.0005				MAT'L. DECAL - 004014			FMF
NO.	REVISION	BY & DATE	CHK	ANG	±1/2"	FINISH			PREV			
THIS DRAWING IN DESIGN AND DETAIL IS OUR PROPERTY AND MUST NOT BE USED EXCEPT IN CONNECTION WITH OUR WORK ALL RIGHTS OF DESIGN AND INVENTION ARE RESERVED THIS IS AN ELECTRONICALLY GENERATED DOCUMENT - DO NOT SCALE THIS PRINT				RFP 04/12/02		CAD FILE 00501001			SIZE A	DRAWING NO. 005010-01		REV A
				DIST BRF-NLV								

## Data Sheet

Date: 2/1/2018

171640.60



Data @ 460 V

## Motor Load Data

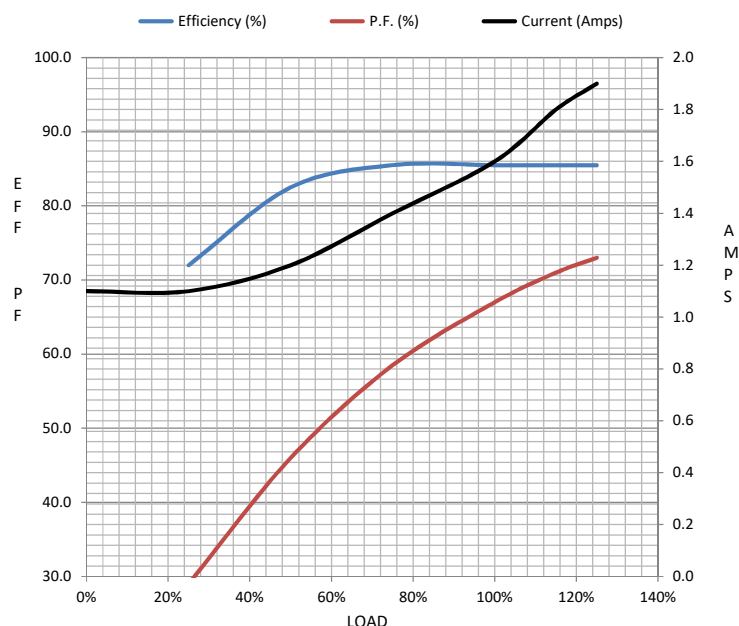
Load	0%	25%	50%	75%	100%	115%	125%	LR	
Current (Amps)	1.10	1.10	1.20	1.40	1.60	1.80	1.90	12.3	
Torque (ft-lb)	0.00	0.74	1.50	2.20	2.00	3.5	3.8	10.7	
RPM	1800	1790	1780	1765	1755	1,745	1740	0	
Efficiency (%)		72.0	82.5	85.5	85.5	85.5	85.5		
P.F. (%)	7.0	29.0	46.0	58.5	67.0	71.0	73.0	53.5	

## Motor Speed Data

	LR	Pull-Up	BD	Rated	Idle
Speed (RPM)	0	265	1275	1755	1800
Current (Amps)	12.3	12.0	7.9	1.60	1.10
Torque (ft-lb)	10.7	9.9	12.4	2.00	0.00

## Information Block

HP	1.0			
Sync. RPM	1800			
Frame	182			
Enclosure	TEFC			
Construction	TFC			
Voltage	230/460#190/380	V		
Frequency	60	Hz		
Design	B			
LR Code letter	L			
Service Factor	1.15			
Temp Rise @ FL	23	° C		
Duty	CONT			
Ambient	40	° C		
Elevation	1,000	feet		
Rotor/Shaft wk²	0.00	Lb-Ft²		
Ref Wdg	T06804006 NONE			
Sound Pressure @ 1M	39	dBA		
VFD Rating	CONSTANT 10:1			
Outline Dwg	SS622146			
Conn. Diag	005010.01			
Additional Specifications:				
0				
0				
EQUIV CKT (OHMS / PHASE)				
R1	R2	X1	X2	Xm
0.0000	0.0000	0.0000	0.0000	0.0000



## Speed - Torque Curve

