

PRODUCT INFORMATION PACKET



Model No: 143TTDBD6070
Catalog No: GT0001-P
1,1800,DP,143T,3/60/208-230/460

Miscellaneous

Regal and Marathon are trademarks of Regal Rexnord Corporation or one of its affiliated companies.
©2021 Regal Rexnord Corporation, All Rights Reserved. MC017097E





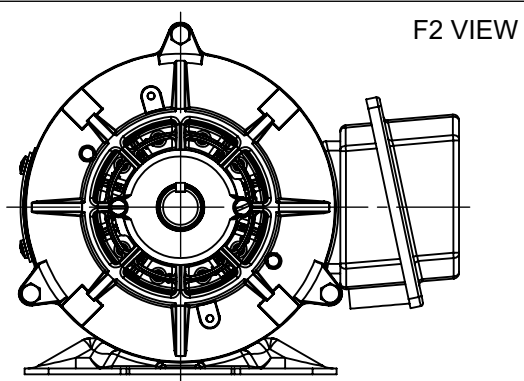
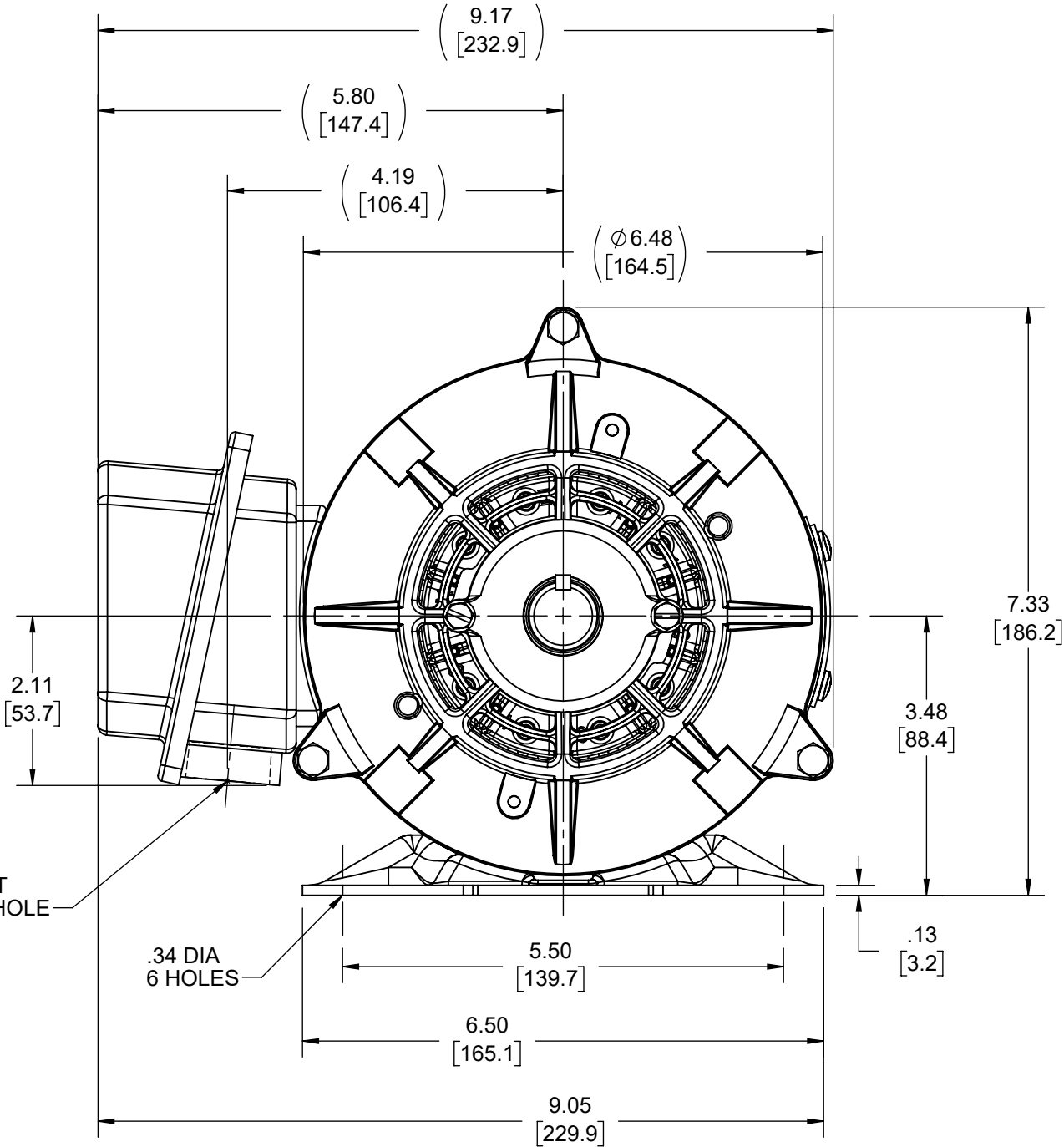
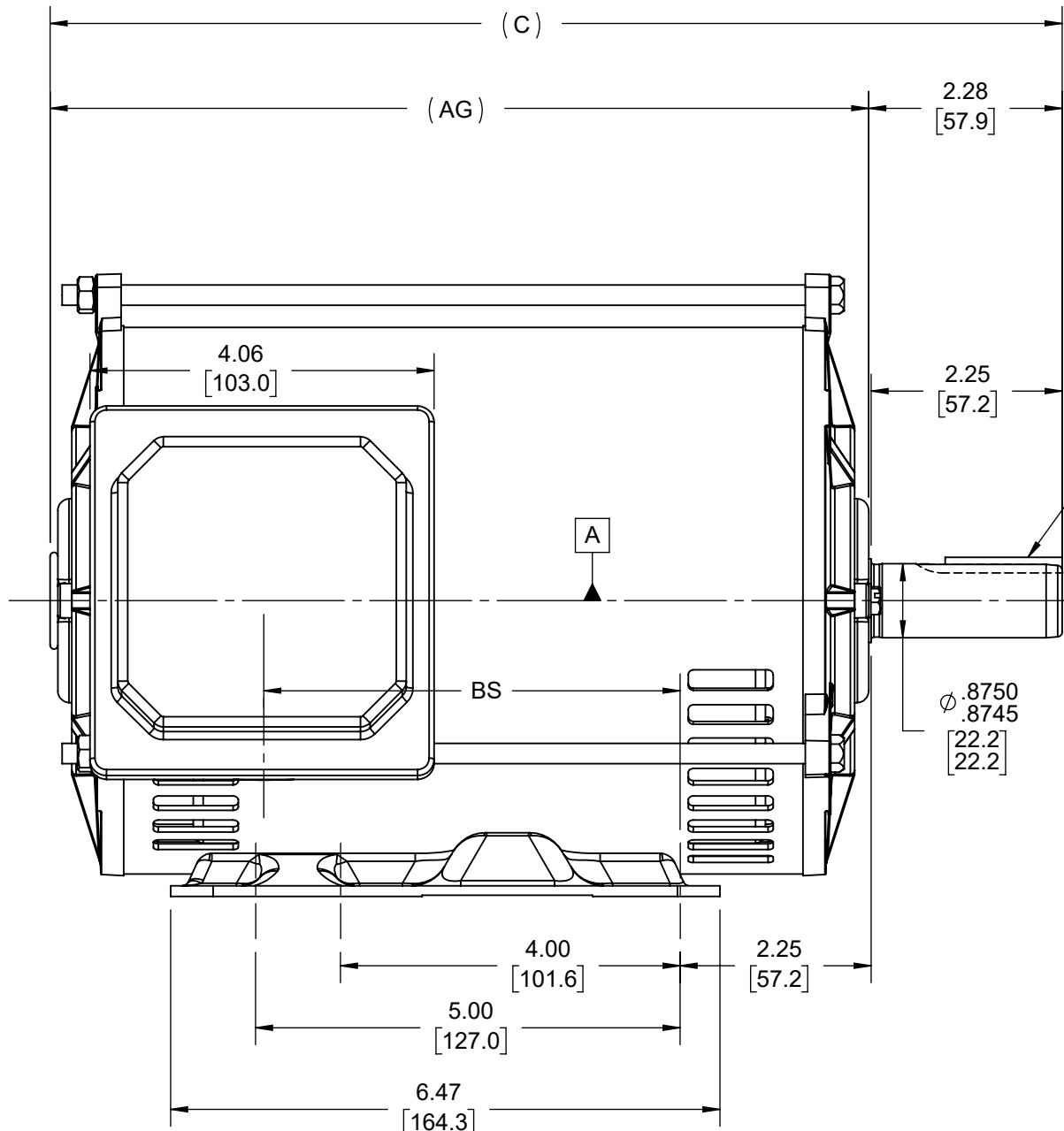
Nameplate Specifications


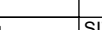
Technical Specifications

| | | | |
|-----------------|----------------|--------------------|----------|
| Outline Drawing | A-SS621067-800 | Connection Drawing | A-EE7308 |
|-----------------|----------------|--------------------|----------|

This is an uncontrolled document once printed or downloaded and is subject to change without notice. Date Created:12/30/2021

| DASH NO | "C" | "AG" | "BS" |
|---------|-------------------|-------------------|------------------|
| 800 | 11.92 [302.77] | 9.64 [244.86] | 4.91 [124.71] |
| 850 | 12.42 [315.47] | 10.14 [257.56] | 5.41 [137.42] |



| | | | | | | | | | | | | | | | | | |
|--|--|--------------------|--|-------------------------------|--|---|--|--|--|---|--|--|--|----------------------------|--|-----------------|--|
| DRAWING REVISION D | | REVISION BY JP | | REV DATE/© DATE 28/09/2021 | | TOLERANCES (EXCEPT AS NOTED): DEC. INCH mm ANGLE .X ±0.1 [±3] ±7° 30" .XX ±0.03 [±0.8] .XXX ±0.005 [±0.13] .XXXX ±0.0005 [±0.013] REMOVE BURRS & BREAK SHARP EDGES: .003/.015 [0.08/.38] X 45° CORNER FILLETS: R.02 [.5] MACHINED SURFACES: 200 INCH mm 5.1 mm DIMENSIONS IN [BRACKETS] ARE FOR REFERENCE ONLY | | | | DRAWN BY SAS | | DRAWN BY  Regal Beloit America, Inc. | | | | | |
| ECO CR-0004630 | | APPROVED BY GNK | | DATE 28/09/2021 | | | | | | DATE 09/14/2020 | | DESCRIPTION OUTLINE 143/145T FR-DP-RS | | | | | |
| ECO DESCRIPTION F2 VIEW ADDED COPYRIGHT (PER REVISION DATE) REGAL BELOIT AMERICA, INC. ALL RIGHTS RESERVED. PROPRIETARY AND CONFIDENTIAL INFORMATION - THIS DOCUMENT IS THE PROPERTY OF REGAL BELOIT AMERICA, INC. ("OWNER") AND CONTAINS OWNER'S PROPRIETARY INFORMATION. ANY PERSON, CORPORATION OR OTHER FIRM RECEIVING IT IS DEEMED, BY RECEIVING IT, TO AGREE THAT IT, AND/OR ANY PART OF IT, SHALL NOT BE DISCLOSED TO ANY PERSON, CORPORATION OR OTHER ENTITY, DUPLICATED, AND/OR USED, EXCEPT AS EXPRESSLY APPROVED IN WRITING IN ADVANCE BY OWNER. THIS DOCUMENT SHALL BE RETURNED TO OWNER UPON REQUEST. IT MAY BE SUBJECT TO CERTAIN RESTRICTIONS UNDER APPLICABLE EXPORT CONTROL LAWS AND REGULATIONS. | | | | | | | | | | APPROVED BY CD | | | | | | | |
| | | | | | | | | | | DATE 09/14/2020 | | | | | | | |
| | | | | | | | | | | REFERENCE | | MATERIAL | | PROCESS/FINISH | | | |
| | | | | | | | | | | THIRD ANGLE PROJECTION  | | SIZE B | | DRAWING NUMBER SS621067 | | SHEET 1 OF 1 | |



| | | | | | | | | | | | |
|--|--|----------------|---------|--------------------------------|-----------------|---|---------------------|-------------|------|----|------|
| | | | | TOLERANCES UNLESS SPECIFIED | |  Regal Beloit America, Inc. | DRAWN RM 11/20/1990 | | | | |
| 5 | CHG TO REGAL LOGO | SL 09/10/2015 | AB | DEC. | INCHES | | CHK ML 11/21/1990 | | | | |
| 4 | REVISED IEC NOTATIONS | MSG 11/15/2011 | CMN | .X | ±.1 | | APPD SAS 04/24/2003 | | | | |
| 3 | ADDED IEC NOTATIONS... (U1), (V1) ETC. MU95194 | MSG 5/10/2010 | MJS | .XX | ±.02 | | SCALE 1=1 | | | | |
| 2 | ADDED THE OPTIONAL CORD CONNECTION MU46318 | RDH 04/24/2003 | DRS | .XXX | ±.005 | TITLE CONNECTION DIAGRAM 3ø – DUAL VOLTAGE MOTOR | REF | | | | |
| 1 | REDRAWN | RM 11/20/1990 | | .XXXX | ±.0005 | MAT'L | FMF | | | | |
| NO. | REVISION | BY & DATE | CHK | ANG | ±7"30" | FINISH | PREV | | | | |
| THIS DRAWING IN DESIGN AND DETAIL IS OUR PROPERTY AND MUST NOT BE USED EXCEPT IN CONNECTION WITH OUR WORK ALL RIGHTS OF DESIGN AND INVENTION ARE RESERVED THIS IS AN ELECTRONICALLY GENERATED DOCUMENT – DO NOT SCALE THIS PRINT | | | RFP | | CAD FILE ee7308 | | SIZE | DRAWING NO. | PAGE | OF | REV. |
| | | | DIST WP | | | | A | EE7308 | | | 5 |