

PRODUCT INFORMATION PACKET

marathon®
Motors

Model No: 143TTDBD6033

Catalog No: GT0501A

Globetrotter® Close-Coupled Pump Motor, 1 HP, 3 Ph, 60 Hz, 575 V, 1800 RPM, 143JM Frame, DP



Regal and Marathon are trademarks of Regal Rexnord Corporation or one of its affiliated companies.
©2023 Regal Rexnord Corporation, All Rights Reserved. MC017097E

RegalRexnord

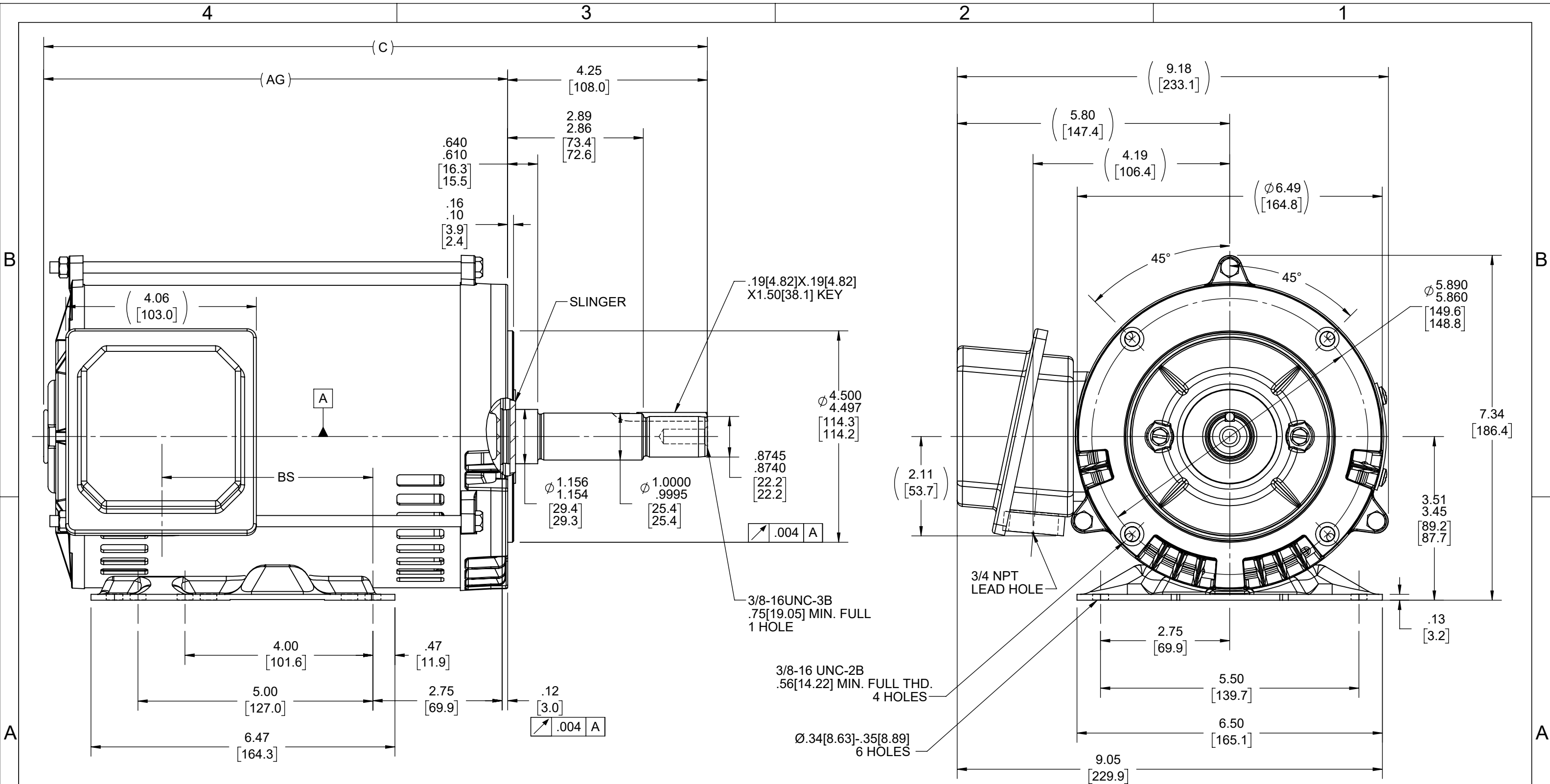
Nameplate Specifications

| | | | |
|------------------------|---------------|----------------------------|------------|
| Output HP | 1 Hp | Output KW | 0.75 kW |
| Frequency | 60 Hz | Voltage | 575 V |
| Current | 1.2 A | Speed | 1755 rpm |
| Service Factor | 1.15 | Phase | 3 |
| Efficiency | 85.5 % | Power Factor | 73 |
| Duty | Continuous | Insulation Class | F |
| Design Code | B | KVA Code | N |
| Frame | 143JM | Enclosure | Drip Proof |
| Thermal Protection | No Protection | Ambient Temperature | 40 °C |
| Drive End Bearing Size | 6206 | Opp Drive End Bearing Size | 6205 |
| UL | Recognized | CSA | Y |
| CE | Y | IP Code | 22 |
| Number of Speeds | 1 | | |

Technical Specifications

| | | | |
|-----------------------|------------------------------|-------------------|----------------------------|
| Electrical Type | Squirrel Cage Inverter Rated | Starting Method | Line Or Inverter |
| Poles | 4 | Rotation | Reversible |
| Resistance Main | 14.1 Ohms | Mounting | Bolt-on Base |
| Motor Orientation | Horizontal | Drive End Bearing | Ball |
| Opp Drive End Bearing | Ball | Frame Material | Rolled Steel |
| Shaft Type | JM | Shaft Diameter | 1.000 in |
| Assembly/Box Mounting | F1/F2 CAPABLE | Inverter Load | CONSTANT 2:1/VARIABLE 10:1 |
| Connection Drawing | EE7300 | Outline Drawing | SS621035-800 |

This is an uncontrolled document once printed or downloaded and is subject to change without notice. Date Created:01/30/2023



| DASH NO | "C" | "AG" | "BS" |
|---------|-------|-------|------|
| 800 | 14.13 | 9.88 | 4.49 |
| 850 | 14.63 | 10.38 | 4.99 |

| DRAWING REVISION | REVISION BY | REV DATE/© DATE |
|--|----------------|-----------------|
| E | SAS | 12/22/2020 |
| ECO CR-0000255 | APPROVED BY CD | DATE 12/22/2020 |
| ECO DESCRIPTION | | |
| CHANGED AS PER REVISED BASE | | |
| COPYRIGHT (PER REVISION DATE) REGAL BELOIT AMERICA, INC. ALL RIGHTS RESERVED. PROPRIETARY AND CONFIDENTIAL INFORMATION - THIS DOCUMENT IS THE PROPERTY OF REGAL BELOIT AMERICA, INC. ("OWNER") AND CONTAINS OWNER'S PROPRIETARY INFORMATION. ANY PERSON, CORPORATION OR OTHER FIRM RECEIVING IT IS DEEMED, BY RECEIVING IT, TO AGREE THAT IT, AND/OR ANY PART OF IT, SHALL NOT BE DISCLOSED TO ANY PERSON, CORPORATION OR OTHER ENTITY, DUPLICATED, AND/OR USED, EXCEPT AS EXPRESSLY APPROVED IN WRITING IN ADVANCE BY OWNER. THIS DOCUMENT SHALL BE RETURNED TO OWNER UPON REQUEST. IT MAY BE SUBJECT TO CERTAIN RESTRICTIONS UNDER APPLICABLE EXPORT CONTROL LAWS AND REGULATIONS. | | |

| TOLERANCES (EXCEPT AS NOTED): | | | |
|--|---------|----------|---------|
| DEC. | INCH | mm | ANGLE |
| .X | ±0.1 | [±3] | ±7° 30" |
| .XX | ±0.03 | [±0.8] | |
| .XXX | ±0.005 | [±0.13] | |
| .XXXX | ±0.0005 | [±0.013] | |
| REMOVE BURRS & BREAK SHARP EDGES: .003/.015 [0.08/.38] X 45° | | | |
| CORNER FILLETS: R.02 [.5] | | | |
| MACHINED SURFACES: 200 INCH 5.1 mm | | | |
| mm DIMENSIONS IN [BRACKETS] ARE FOR REFERENCE ONLY | | | |

| DRAWN BY | SD |
|------------------------|------------|
| DATE | 07/02/2020 |
| APPROVED BY | CD |
| DATE | 08/10/2020 |
| REFERENCE | |
| THIRD ANGLE PROJECTION | |

| | |
|---|----------------|
| REGAL ® Regal Beloit America, Inc. | |
| DESCRIPTION | |
| OUTLINE | |
| 143/145 JM FR-ODP-RS | |
| MATERIAL | PROCESS/FINISH |
| SIZE B | DRAWING NUMBER |
| | SS621035 |
| SHEET 1 OF 1 | |

THREE PHASE - SINGLE VOLTAGE
MOTOR - CONDUIT BOX @ 'A'

TO REVERSE ROTATION:
INTERCHANGE ANY TWO LINE
LEAD CONNECTIONS

TERMINAL BLOCK WHEN SPECIFIED

IF MOTOR HAS 9 LEADS

T1(U1) T1(U1) T1(U1) → L1

T2(V1) T2(V1) T2(V1) → L2

T3(W1) T3(W1) T3(W1) → L3

IF MOTOR HAS 6 LEADS

T1(U1) T1(U1) → L1

T2(V1) T2(V1) → L2


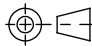
T3(W1) T3(W1) → L3

A-9806 DECAL



VIEW OF TERMINAL END

| OPTIONAL CORD CONNECTION | |
|--------------------------|-------|
| L1 | WHITE |
| L2 | RED |
| L3 | BLACK |

| | | | | | | | | | | |
|--|--|-------------------|-------------------------------|--|------------------------|--|--|--|----------------|--|
| DRAWING REVISION AC | | REVISION BY BS | REV DATE/© DATE 26/07/2022 | PRIMARY DIMENSIONS ARE INCH mm DIMENSIONS IN [BRACKETS] ARE FOR REFERENCE ONLY | DRAWN BY DA | | <div></div> <div>Regal Beloit America, Inc.</div> | | | |
| REQUEST NUMBER CR-0010402 | | APPROVED BY SN | DATE 26/07/2022 | | DATE 03-26-1993 | | | | | |
| REQUEST NUMBER DESCRIPTION DRAWING UPDATED | | | | | APPROVED BY TB | | DESCRIPTION <div>CONNECTION DIAGRAM</div> <div>EXTERNAL - SINGLE VOLTAGE - 3Ø MOTOR</div> | | | |
| COPYRIGHT (PER REVISION DATE) REGAL BELOIT AMERICA, INC. ALL RIGHTS RESERVED. PROPRIETARY AND CONFIDENTIAL INFORMATION - THIS DOCUMENT IS THE PROPERTY OF REGAL BELOIT AMERICA, INC. ("OWNER") AND CONTAINS OWNER'S PROPRIETARY INFORMATION. ANY PERSON, CORPORATION OR OTHER FIRM RECEIVING IT IS DEEMED, BY RECEIVING IT, TO AGREE THAT IT, AND/OR ANY PART OF IT, SHALL NOT BE DISCLOSED TO ANY PERSON, CORPORATION OR OTHER ENTITY, DUPLICATED, AND/OR USED, EXCEPT AS EXPRESSLY APPROVED IN WRITING IN ADVANCE BY OWNER. THIS DOCUMENT SHALL BE RETURNED TO OWNER UPON REQUEST. IT MAY BE SUBJECT TO CERTAIN RESTRICTIONS UNDER APPLICABLE EXPORT CONTROL LAWS AND REGULATIONS. | | | | | DATE 03-26-1993 | | | | | |
| | | | | | REFERENCE | | MATERIAL | | PROCESS/FINISH | |
| | | | | | THIRD ANGLE PROJECTION | |  | | SIZE A | |

EC Declaration of Conformity

The undersigned representing
the manufacturer:

Regal Beloit America
100 East Randolph St.
Wausau, WI 54401

and the authorized representative
established within the Community:

Marathon Electric UK
6F Thistleton Road Ind. Estate
Market Overton
Oakham, Rutland LE15 7PP UK

are committed to providing customers with products that comply with applicable regulations and international protocols to which they are subject, including the requirements of the European Parliament Directive on the Harmonization of the laws relating to electrical equipment designed for use within certain voltage limits (2014/35/EU).

Regal Beloit America declares that the following product(s), to which this declaration relates, are in conformity with the relevant sections of the EC standards listed below.

This statement supersedes any statements previously issued pertaining to the product(s) listed below and is subject to change without notice.

Model No : 143TTDBD6033

(Model No. may contain prefix and/or suffix characters)

Catalog No : GT0501A

Rework No : N/A

Directives :

Low Voltage Directive 2014/35/EU

Harmonized Standards Used :

EN 60034-1: 2010 (IEC 60034-1: 2010)

EN 60034-5: 2001/A1:2007 (IEC 60034-5: 2000/A1:2006)

Authorized Representative:



Michael A. Logsdon
Vice President, Technology

Authorized Representative in the Community:



Julian Clark
Marketing Engineer

Created on 09/01/2022

CE 22