

PRODUCT INFORMATION PACKET



Model No: 171848.60

Catalog No: 171848.60

Grain Stirring Motor, 10 & 7.50 HP, 3 Ph, 60 & 50 Hz, 208-230/460 & 190/380 V, 1800 & 1500 RPM,
215TZ Frame, TEFC



Regal and Leeson are trademarks of Regal Rexnord Corporation or one of its affiliated companies.

©2023 Regal Rexnord Corporation, All Rights Reserved. MC017097E





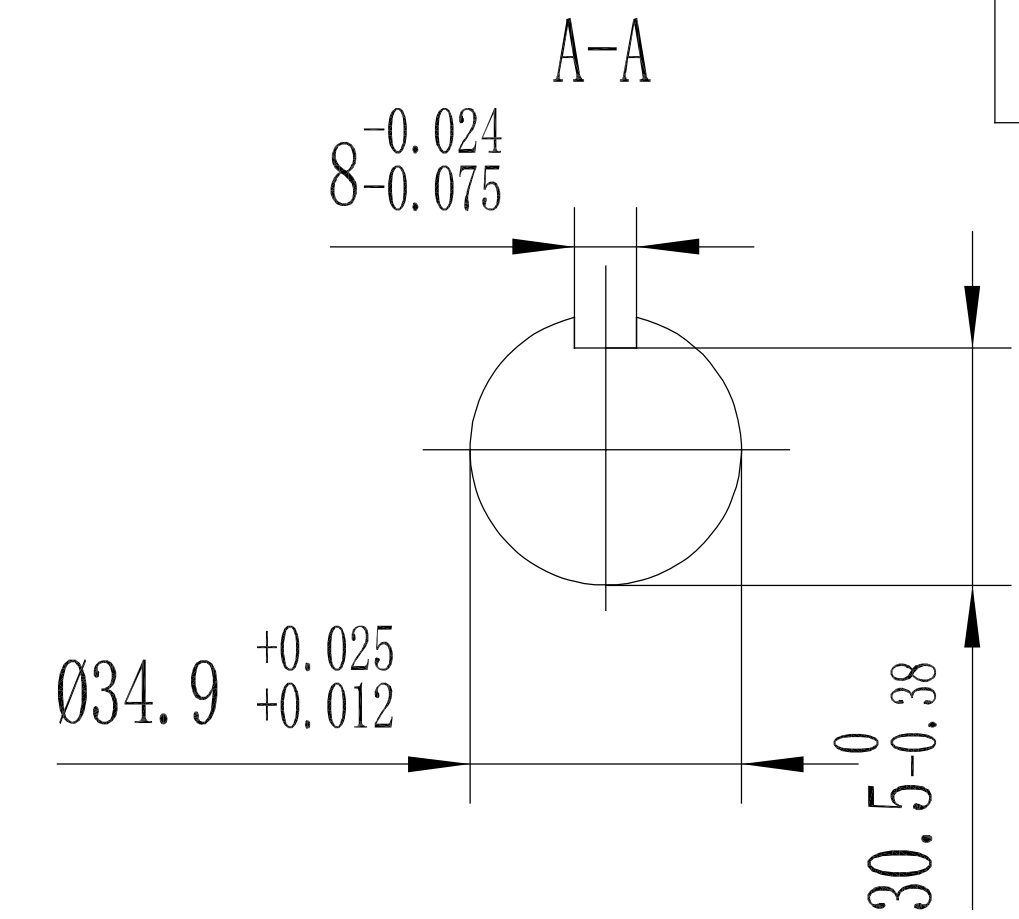
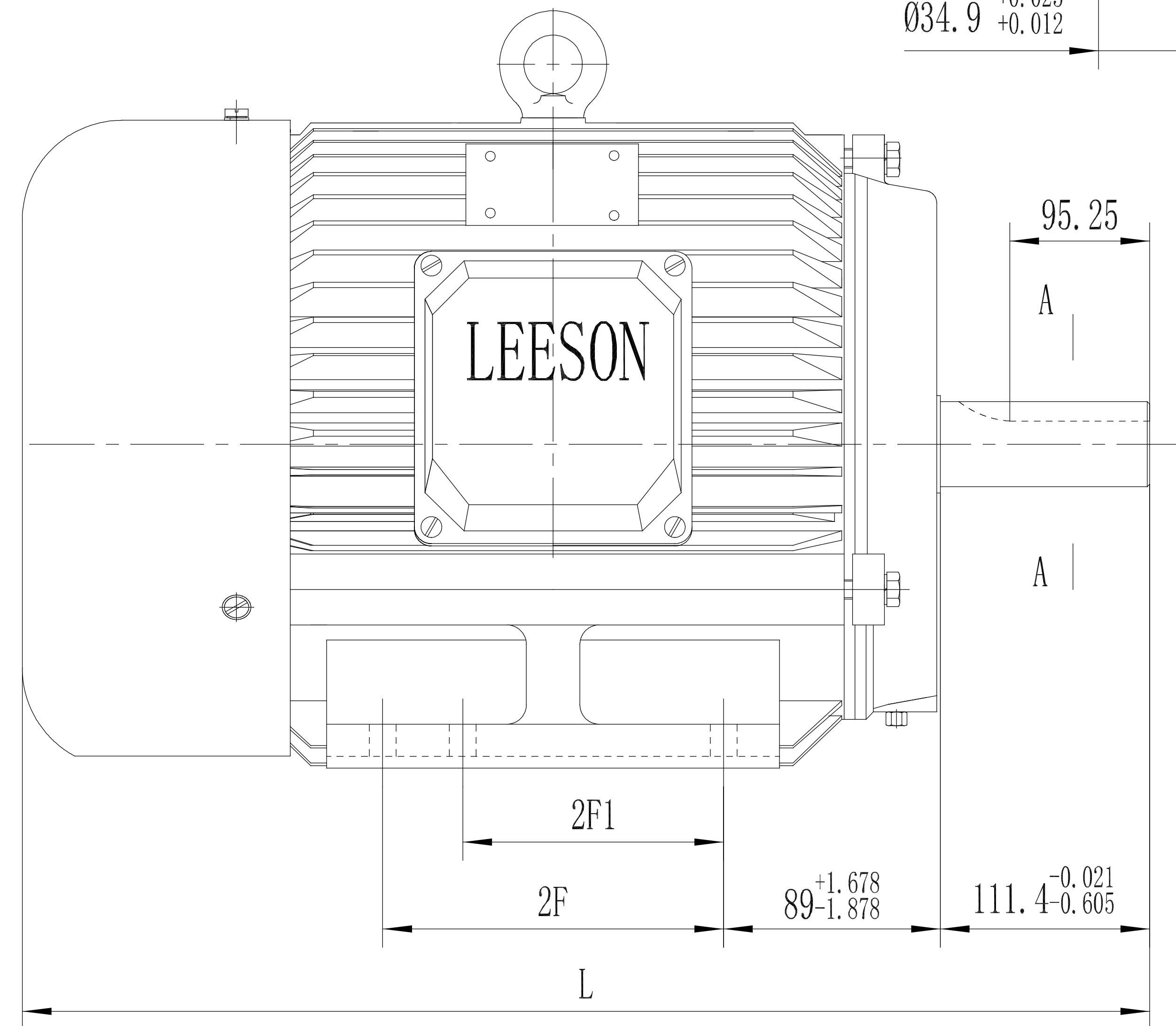
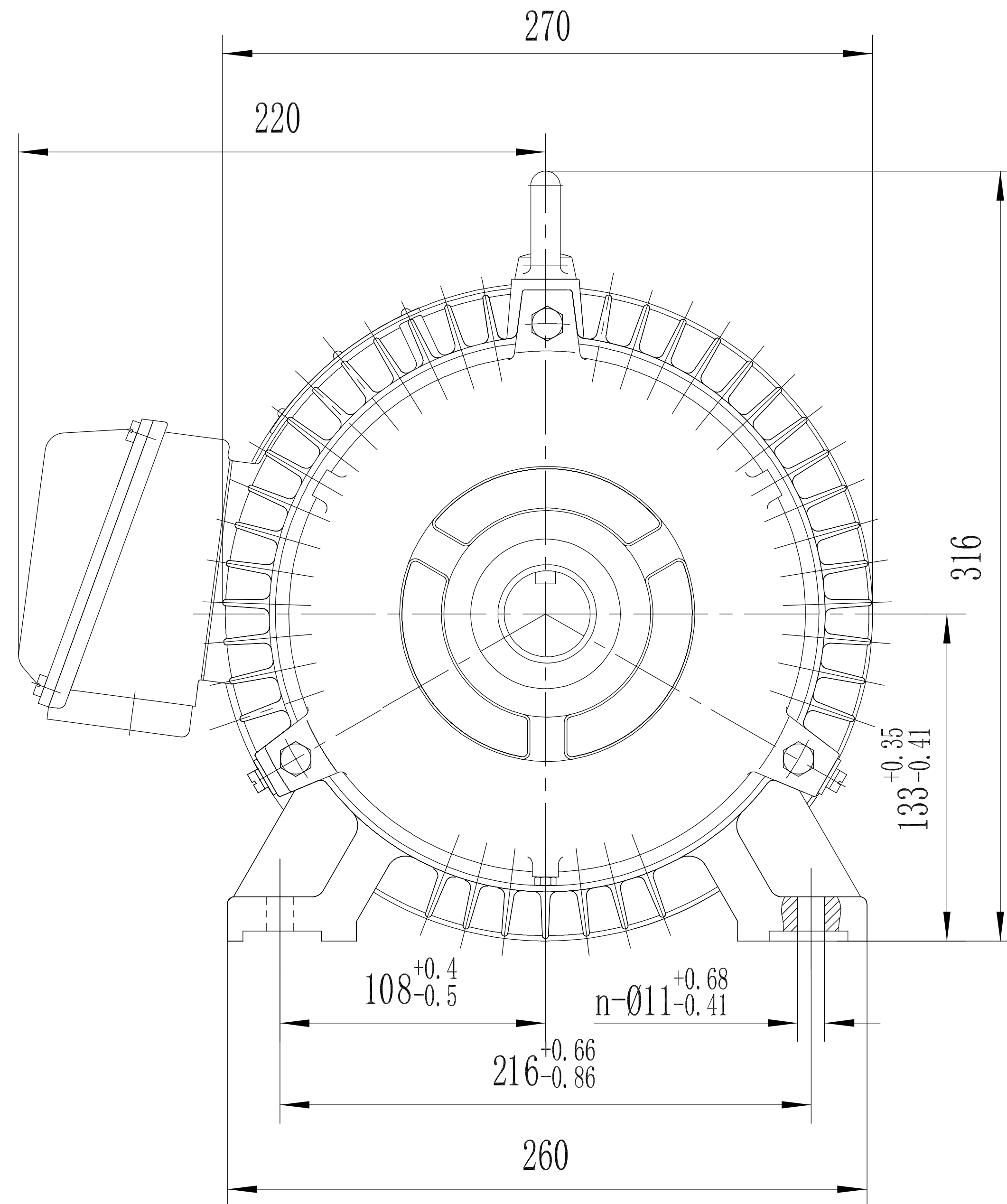
Nameplate Specifications

| | | | |
|------------------------|------------------------|----------------------------|-----------------------------|
| Phase | 3 | Output HP | 10 & 7.50 Hp |
| Output KW | 7.5 & 5.6 kW | Voltage | 208-230/460 & 190/380 V |
| Speed | 1760 & 1465 rpm | Service Factor | 1.15 & 1.15 |
| Frame | 215TZ | Enclosure | Totally Enclosed Fan Cooled |
| Thermal Protection | No Protection | Efficiency | 91.7 & 91 % |
| Ambient Temperature | 40 °C | Frequency | 60 & 50 Hz |
| Current | 27-25/12.5 & 23/11.5 A | Power Factor | 81.6 |
| Duty | Continuous | Insulation Class | F |
| Design Code | B | KVA Code | H |
| Drive End Bearing Size | 6308 | Opp Drive End Bearing Size | 6306 |
| UL | Recognized | CSA | Y |
| CE | Y | IP Code | 55 |
| Number of Speeds | 1 | | |


Technical Specifications

| | | | |
|-----------------------|------------------------------|-------------------|-----------------------------|
| Electrical Type | Squirrel Cage Inverter Rated | Starting Method | Line Or Inverter |
| Poles | 4 | Rotation | Reversible |
| Resistance Main | .216 Ohms | Mounting | Rigid Base |
| Motor Orientation | Horizontal | Drive End Bearing | Ball |
| Opp Drive End Bearing | Ball | Frame Material | Cast Iron |
| Shaft Type | Single Special Extension | Overall Length | 20.78 in |
| Shaft Diameter | 1.375 in | Shaft Extension | 4.38 in |
| Assembly/Box Mounting | F1/F2 CAPABLE | Inverter Load | CONSTANT 10:1/VARIABLE 10:1 |
| Connection Drawing | 005010-20 | Outline Drawing | SS620863 |

SS620863

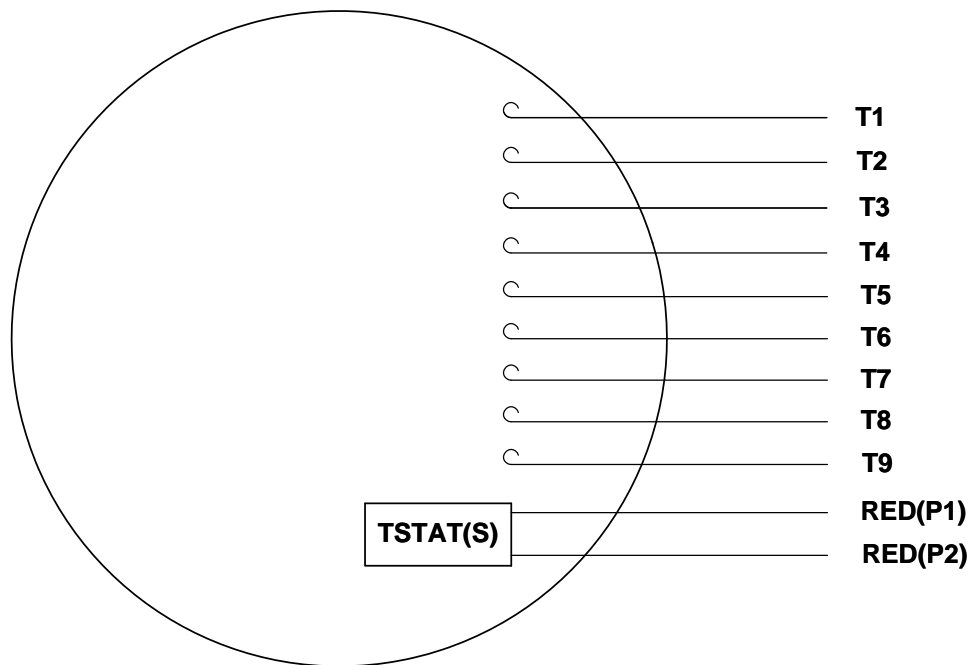


| CAT. NO. | FRAME | 2F1 | 2F | n | L |
|-----------|-------|-----------------------|-----------------------|---|-----|
| 171847.60 | 213T | $140^{+0.46}_{-1.06}$ | | 4 | 492 |
| 171848.60 | 215T | $140^{+0.46}_{-1.06}$ | $178^{+0.56}_{-0.96}$ | 6 | 528 |

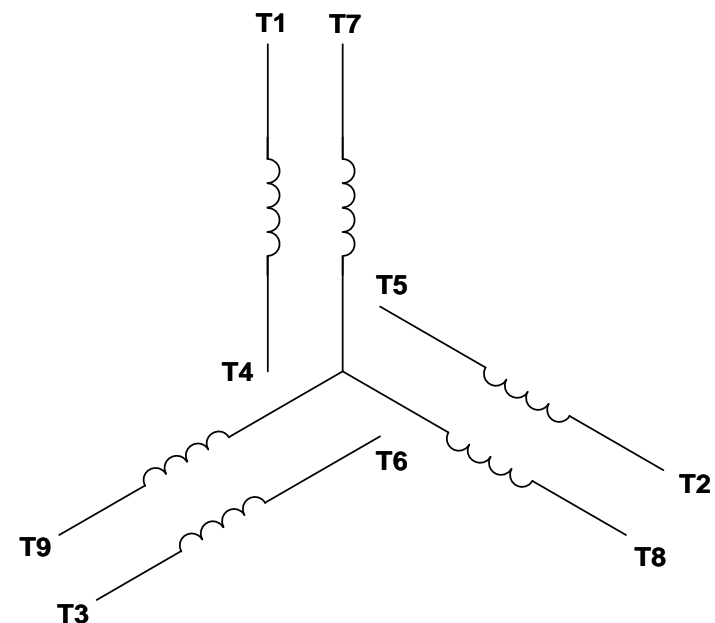
| | | | | | | | | | | | | |
|--|-------------------------------------|--------------|-----------|--------------------------------|------------------------------|--|--|--------|-----------|-------------------------|-----|-----------|
| | | | | TOLERANCES UNLESS SPECIFIED | | <div>Regal-Beloit Corporation</div> | | | DRAWN | | | |
| | | | | DEC. | INCHES | | | | CHK | | | |
| | | | .X | ±.1 | APPD | | | | | | | |
| | | | .XX | ±.03 | SCALE | | | | | | | |
| | | | .XXX | ±.005 | TITLE OUTLINE N210TZ-4 | | | REF | | | | |
| A | RELEASED FOR PRODUCTION ECO-0138957 | WGJ 2/1/2018 | EMH .XXXX | ±.0005 | | | | MAT'L. | | | FMF | |
| NO. | REVISION | BY & DATE | CHK | ANG | ±1/2 | FINISH | | | PREV | | | |
| THIS DRAWING IN DESIGN AND DETAIL IS OUR PROPERTY AND MUST NOT BE USED EXCEPT IN CONNECTION WITH OUR WORK ALL RIGHTS OF DESIGN AND INVENTION ARE RESERVED THIS IS AN ELECTRONICALLY GENERATED DOCUMENT - DO NOT SCALE THIS PRINT | | | RFP | | | CAD FILE | | | SIZE B | DRAWING NO. SS620863 | | REV. A |
| | | | DIST | | | | | | | | | |

VIEW FROM OUTSIDE OF MOTOR AT SWITCH END.

Uncontrolled Copy



LINE LEADS



| VOLTAGE | L1 | L2 | L3 | JOIN & INSULATE |
|---------|-------|-------|-------|-------------------------------|
| HIGH | T1 | T2 | T3 | (T4,T7) (T5,T8) (T6,T9) |
| LOW | T1,T7 | T2,T8 | T3,T9 | T4,T5,T6 |

| | | |
|-----------------------|--------------------|--------------------|
| DRAWING REVISION G | REVISION BY MVG | DATE 04/05/2017 |
| ECO ECO-0121253 | APPROVED BY SM | DATE 04/05/2017 |

ECO DESCRIPTION
ADDED P1 & P2 FOR TSTAT

TOLERANCES UNLESS OTHERWISE SPECIFIED:

| DEC. | INCH | mm | ANGLE |
|-------|---------|-----------|-------|
| .X | ±0.1 | [±2.5] | ±0.5° |
| .XX | ±0.01 | [±0.25] | |
| .XXX | ±0.005 | [±0.127] | |
| .XXXX | ±0.0005 | [±0.0127] | |

REMOVE BURRS & BREAK SHARP EDGES: .003/.015 [.076/.381] X 45°
CORNER FILLETS: R.02 [.51]
MACHINED SURFACES: 125/3.2 INCH/mm

mm SHOWN IN [BRACKETS]

| | |
|----------------------------|------|
| DRAWN BY DBT 12/16/97 | DATE |
| APPROVED BY KH 12/17/97 | DATE |
| REFERENCE | |
| THIRD ANGLE PROJECTION | |

| | |
|--|----------------------------|
| Regal Beloit America, Inc. | |
| DESCRIPTION CONN DIAGRAM-EXTERNAL 3 PHASE WITH PROTECTOR | |
| MATERIAL DECAL - 004014 (TSTAT) - 080582 | PROCESS/FINISH STOCK |
| SIZE A | DRAWING NUMBER 00501020 |
| SHEET 1 OF 1 | |

EC Declaration of Conformity

The undersigned representing
the manufacturer:

Regal Beloit America
100 East Randolph St.
Wausau, WI 54401

and the authorized representative
established within the Community:

Marathon Electric UK
6F Thistleton Road Ind. Estate
Market Overton
Oakham, Rutland LE15 7PP UK

are committed to providing customers with products that comply with applicable regulations and international protocols to which they are subject, including the requirements of the European Parliament Directive on the Harmonization of the laws relating to electrical equipment designed for use within certain voltage limits (2014/35/EU).

Regal Beloit America declares that the following product(s), to which this declaration relates, are in conformity with the relevant sections of the EC standards listed below.

This statement supersedes any statements previously issued pertaining to the product(s) listed below and is subject to change without notice.

Model No : 171848.60

(Model No. may contain prefix and/or suffix characters)

Catalog No : 171848.60

Rework No : N/A

Directives :

Low Voltage Directive 2014/35/EU

Harmonized Standards Used :

EN 60034-1: 2010 (IEC 60034-1: 2010)

EN 60034-5: 2001/A1:2007 (IEC 60034-5: 2000/A1:2006)

Authorized Representative:



Michael A. Logsdon
Vice President, Technology

Authorized Representative in the Community:



Julian Clark
Marketing Engineer

Created on 09/01/2022

CE 22