

PRODUCT INFORMATION PACKET



Model No: 171766.00

Catalog No: 171766.00

****OBSOLETE, REPLACED BY 326TTFC6030 ** 50 HP 1800 575 TEFC 326TC W/BASE PREM
General Purpose Motors**

Regal and Leeson are trademarks of Regal Rexnord Corporation or one of its affiliated companies.
©2021 Regal Rexnord Corporation, All Rights Reserved. MC017097E



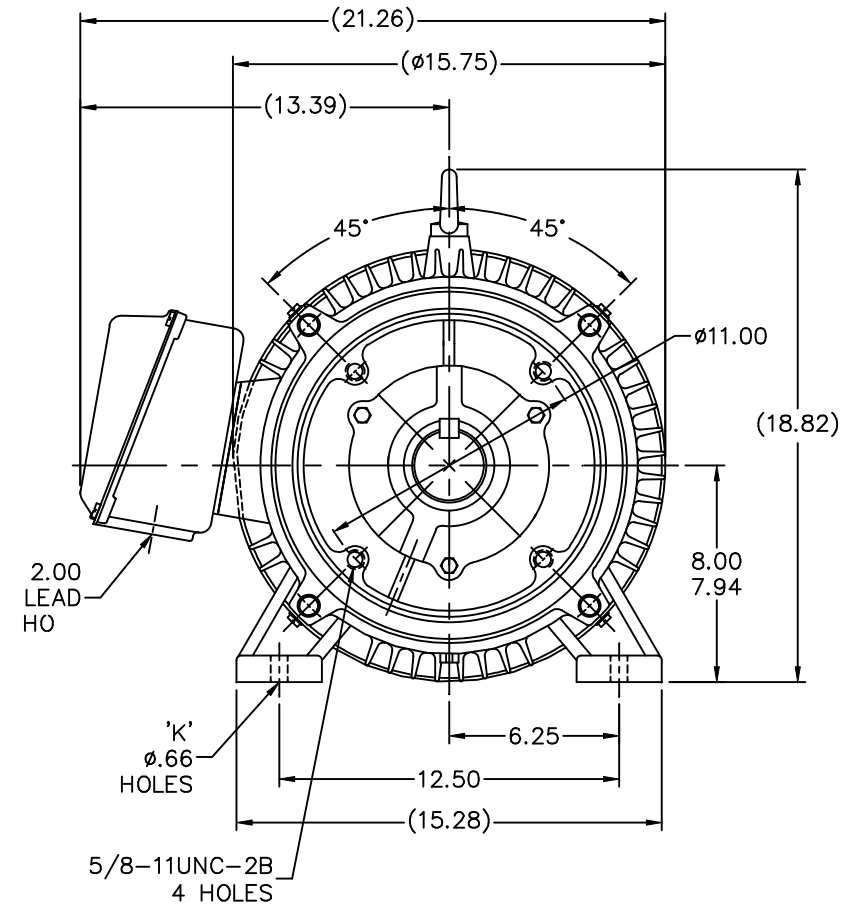
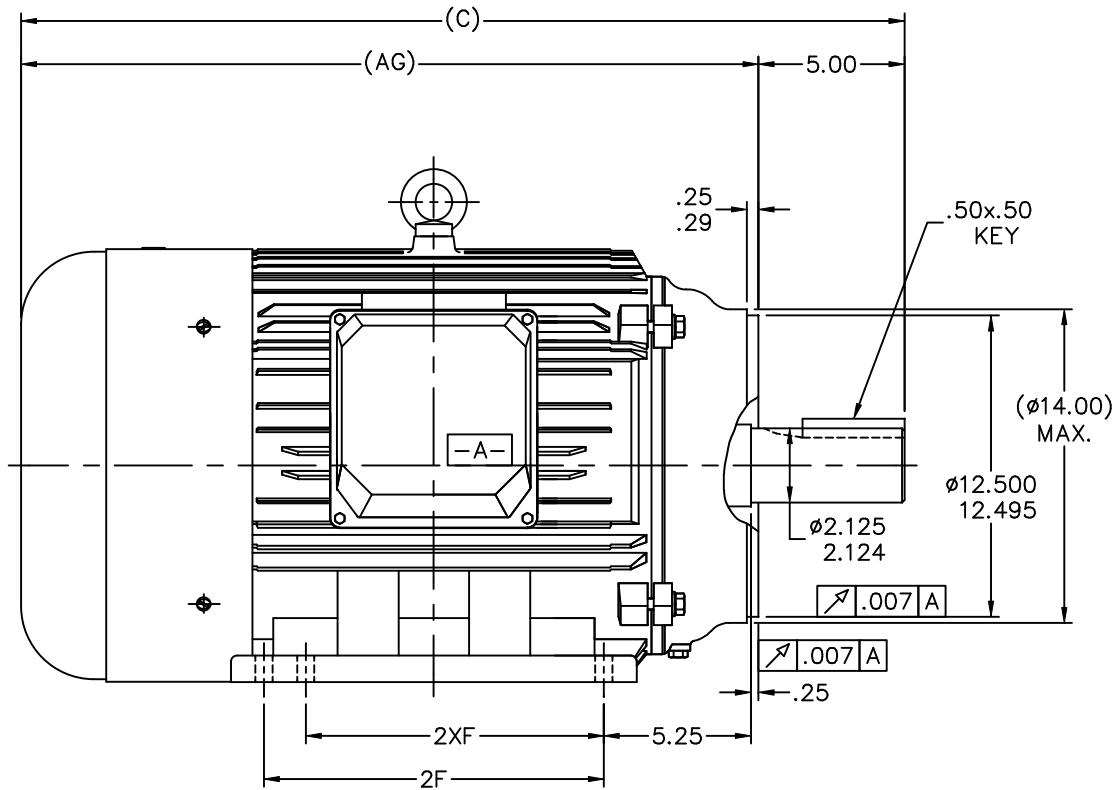


Nameplate Specifications


Output HP	50 Hp	Output KW	37.0 kW
Frequency	60 Hz	Voltage	575 V
Current	47.0 A	Speed	1780 rpm
Service Factor	1.15	Phase	3
Efficiency	94.5 %	Power Factor	84
Duty	Continuous	Insulation Class	F
Design Code	B	KVA Code	G
Frame	326TC	Enclosure	Totally Enclosed Fan Cooled
Thermal Protection	No	Ambient Temperature	40 °C
Drive End Bearing Size	6312	Opp Drive End Bearing Size	6312
UL	Recognized	CSA	Y
CE	Y	IP Code	43
Number of Speeds	1		

Technical Specifications

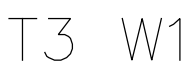
Electrical Type	Squirrel Cage Induction Run	Starting Method	Wye Start Delta Run
Poles	4	Rotation	Reversible
Resistance Main	.135 Ohms	Mounting	Rigid Base
Motor Orientation	Horizontal	Drive End Bearing	Ball
Opp Drive End Bearing	Ball	Frame Material	Cast Iron
Shaft Type	T	Overall Length	31.02 in
Shaft Diameter	2.125 in	Shaft Extension	5.25 in
Assembly/Box Mounting	F1/F2 CAPABLE		
Outline Drawing	SS622046LE-N326TC-4	Connection Drawing	00519001



NOT DRAWN TO SCALE

												TOLERANCES UNLESS SPECIFIED		 ELECTRIC MOTORS GEARMOTORS AND DRIVES		DRAWN MSG 08-11-2005			
										DEC.		INCHES				CHK ML 08-12-2005			
										.X		±.1				APPD LMC 08-24-2005			
												.XX		±.03		TITLE OUTLINE		SCALE 1=2	
												.XXX		±.005		324/6TC FRAME - C'FACE		REF	
												.XXXX		±.0005		MAT'L		FMF	
								NO.		REVISION		BY & DATE		CHK ANG ±7°30"		FINISH		PREV 250014630-40	
								THIS DRAWING IN DESIGN AND DETAIL IS OUR PROPERTY AND MUST NOT BE USED EXCEPT IN CONNECTION WITH OUR WORK. ALL RIGHTS OF DESIGN AND INVENTION ARE RESERVED THIS IS AN ELECTRONICALLY GENERATED DOCUMENT - DO NOT SCALE THIS PRINT		RFP		CAD FILE ss622046le		SIZE B		DRAWING NO. SS622046LE		PAGE OF	
										DIST LB									
DASH		FRAME		C		AG		B		2F		2XF		K		BS			

005190-01



START
(WYE)

04	ADDED MAT'L (CWLE) PER ECO-0168542
----	------------------------------------

03	ADDED IEC DESIGNATIONS	MOL
02	REMOVED OBSOLETE STATUS	KJH
01	REDRAWN ON CAD	DBT

NO.	REVISION	BY
-----	----------	----

THIS DRAWING IN DESIGN AND DETAIL IS OUR PROPERTY
AND MUST NOT BE USED EXCEPT IN CONNECTION WITH OUR WORK
ALL RIGHTS OF DESIGN AND INVENTION ARE RESERVED

TOLERANCES UNLESS OTHERWISE SPECIFIED
DECIMALS

.00	$\pm .01$
.000	$\pm .005$
.0000	$\pm .0005$

FRACTIONS	$\pm 1/64$
-----------	------------

ANGLES	$\pm 1/2^\circ$
INCH/MM	

LEESON

DRAWN PG 05/07/82

APPR. 05/07/82

REF. T2E