

# PRODUCT INFORMATION PACKET



Model No: 171646.60

Catalog No: 171646.60

WATTSaver® General Purpose Motor, 1.50 & 1 HP, 3 Ph, 60 & 50 Hz, 208-230/460 & 190/380 V,  
1800 & 1500 RPM, 145T Frame, TEFC



Regal and Leeson are trademarks of Regal Rexnord Corporation or one of its affiliated companies.

©2023 Regal Rexnord Corporation, All Rights Reserved. MC017097E



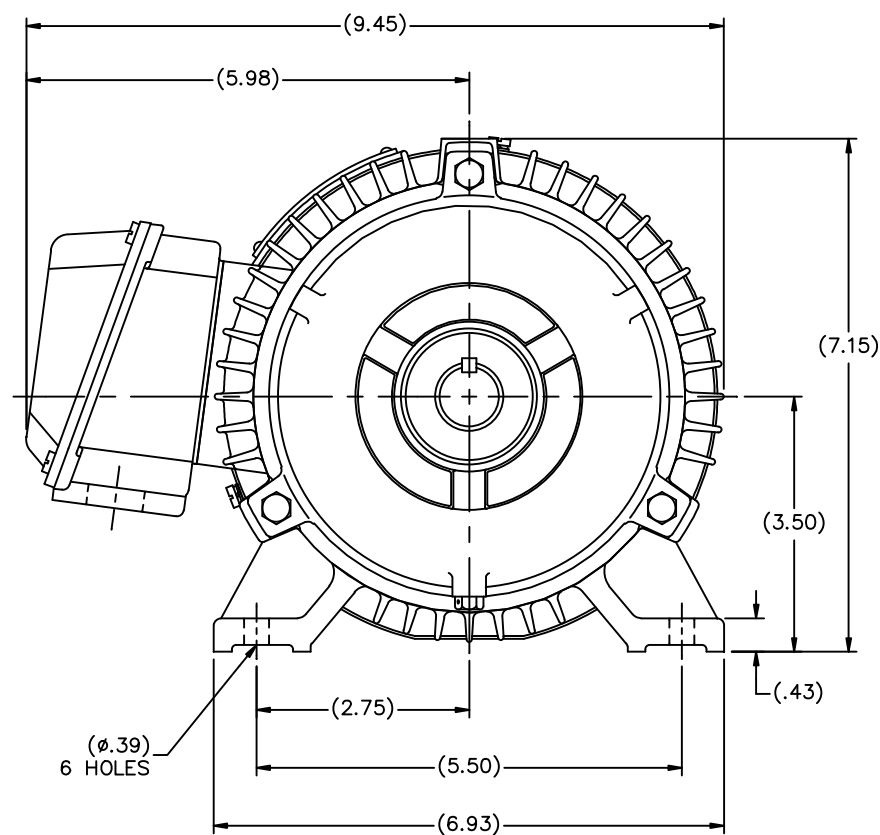
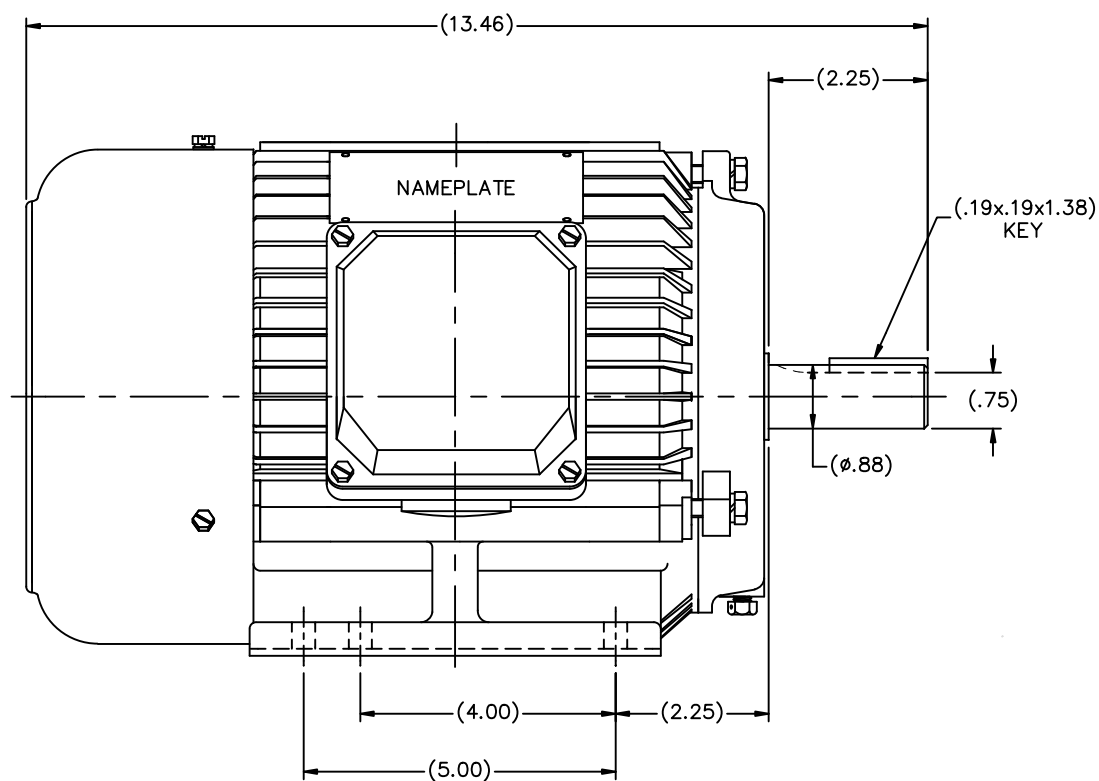


## Nameplate Specifications


Phase	3	Output HP	1.50 & 1 Hp
Output KW	1.1 & 0.75 kW	Voltage	208-230/460 & 190/380 V
Speed	1760 & 1470 rpm	Service Factor	1.15 & 1.15
Frame	145T	Enclosure	Totally Enclosed Fan Cooled
Thermal Protection	No Protection	Efficiency	87.5 & 86.5 %
Ambient Temperature	40 °C	Frequency	60 & 50 Hz
Current	4.8-4.8/2.4 & 4.2/2.1 A	Power Factor	67
Duty	Continuous	Insulation Class	F
Design Code	B	KVA Code	M
Drive End Bearing Size	6205	Opp Drive End Bearing Size	6205
UL	No	CSA	N
CE	N	IP Code	43
Number of Speeds	1		

## Technical Specifications

Electrical Type	Squirrel Cage Inverter Rated	Starting Method	Line Or Inverter
Poles	4	Rotation	Reversible
Mounting	Rigid Base	Motor Orientation	Horizontal
Drive End Bearing	Ball	Opp Drive End Bearing	Ball
Frame Material	Cast Iron	Shaft Type	T
Overall Length	13.46 in	Shaft Diameter	0.875 in
Shaft Extension	2.25 in	Assembly/Box Mounting	F1/F2 CAPABLE
Inverter Load	CONSTANT 10:1		
Connection Drawing	00501001	Outline Drawing	SS622146



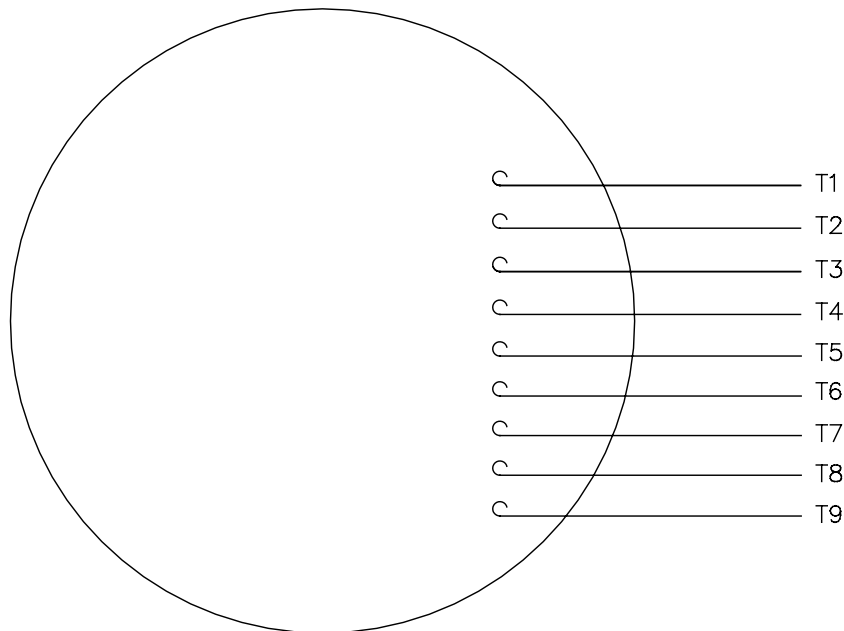
(DRAWING MAY NOT BE TO SCALE)

				TOLERANCES UNLESS SPECIFIED		 <b>REGAL-BELOIT CORPORATION</b>	DRAWN MSG 06-28-2006		
				DEC.	INCHES		CHK	ML	06-28-2006
				.X	±.1		APPD	SB	06-28-2006
				.XX	±.03		SCALE 5=8		
				.XXX	±.005		REF		
01	CHANGE CO FROM MARATHON TO RBC	ISAAC 10-3802	TF	10/5/2010	.XXXX	±.0005	MAT'L	FMF	MU75330
				REVISION		CHK	ANG	FINISH	PREV
				BY & DATE		RFP	09-25-2006	CAD FILE	SS622146
						DIST	MAR-WA-WP	SIZE	B
						DRAWING NO. PAGE OF			REV.
						SS622146			01

THIS DRAWING IN DESIGN AND DETAIL IS OUR PROPERTY AND MUST NOT BE USED EXCEPT  
IN CONNECTION WITH OUR WORK. ALL RIGHTS OF DESIGN AND INVENTION ARE RESERVED.  
THIS IS AN ELECTRONICALLY GENERATED DOCUMENT - DO NOT SCALE THIS PRINT

005010-01

VIEW FROM OUTSIDE OF MOTOR AT SWITCH END.



				TOLERANCES UNLESS SPECIFIED		 <b>Regal Beloit America, Inc.</b>	DRAWN RDW 04/12/02	
				DEC.	INCHES		CHK	
				.X	±.1		APPD	
				.XX	±.01		SCALE 1=1	
				.XXX	±.005	TITLE EXTERNAL WIRING DIAGRAM 3 PHASE W/O PROTECTOR	REF FIG.2-51	
A	UPDATED TO REGAL LOGO	SAJ 06/26/15	AJY	.XXXX	±.0005		FMF	
NO.	REVISION	BY & DATE	CHK	ANG	±1/2"	FINISH	PREV	
THIS DRAWING IN DESIGN AND DETAIL IS OUR PROPERTY AND MUST NOT BE USED EXCEPT IN CONNECTION WITH OUR WORK ALL RIGHTS OF DESIGN AND INVENTION ARE RESERVED THIS IS AN ELECTRONICALLY GENERATED DOCUMENT - DO NOT SCALE THIS PRINT				RFP	04/12/02	CAD FILE	00501001	SIZE
				DIST	BRF-NLV			A
							DRAWING NO.	
							005010-01	
							REV.	
							A	



**CERTIFICATION DATA SHEET**

**1051 CHEYENNE AVE.  
GRAFTON, WI 53024  
PH. 262-377-8810**

**CONN. DIAGRAM:** 00501001

**CATALOG #:** 171646.60

**OUTLINE:** B-SS622146

**MOUNTING:** F1/F2 CAPABLE

**WINDING #:** T06804008 3

**TYPICAL MOTOR PERFORMANCE DATA**

HP	kW	SYNC. RPM	F.L. RPM	FRAME	ENCLOSURE	KVA CODE	DESIGN
1 1/2	1.12	1800	1760	145T	TEFC	M	B

PH	Hz	VOLTS	AMPS	START TYPE	DUTY	INSL	S.F.	AMB°C
3	60/50	208-230/460	4.8-4.8/2.4	LINE OR INVERTER	CONTINUOUS	F5	1.15/1.15	40

<b>FULL LOAD EFF:</b>	87.5	<b>3/4 LOAD EFF:</b>	86.5	<b>1/2 LOAD EFF:</b>	84	<b>GTD. EFF</b>		<b>ELEC. TYPE</b>
<b>FULL LOAD PF:</b>	67	<b>3/4 LOAD PF:</b>	58.5	<b>1/2 LOAD PF:</b>	45	85.5		SQ CAGE INV RATED

F.L. TORQUE	LOCKED ROTOR AMPS	L.R. TORQUE	B.D. TORQUE	F.L. RISE°C
4.5 LB-FT	38.6 / 19.3	16.6 LB-FT 369 %	19.2 LB-FT 427 %	29

SOUND PRESSURE @ 3 FT.	SOUND POWER	ROTOR WK^2	MAX. WK^2	SAFE STALL TIME	STARTS / HOUR	APPROX. MOTOR WGT
37.5 dBA	47.5 dBA	- LB-FT^2	- LB-FT^2	20 SEC.	2	61 LBS.

**\*\*\* SUPPLEMENTAL INFORMATION \*\*\***

DE BRACKET TYPE	ODE BRACKET TYPE	MOUNT TYPE	ORIENTATION	SEVERE DUTY	HAZARDOUS LOCATION	DRIP COVER	SCREENS	PAINT
STANDARD	STANDARD	RIGID	HORIZONTAL	FALSE	NONE	FALSE	NONE	GREEN - LEESON WATTSaver

BEARINGS		GREASE	SHAFT TYPE	SPECIAL DE	SPECIAL ODE	SHAFT MATERIAL	FRAME MATERIAL
DE	ODE						
BALL	BALL	POLYREX EM	T	NONE	NONE	1144 STRESSPROOF (C-223)	CAST IRON
6205	6205						

THERMO-PROTECTORS				THERMISTORS	CONTROL	SPACE HEATERS
THERMOSTATS	PROTECTORS	WDG RTDs	BRG RTDs			
NONE	NOT	NONE	NONE	NONE	FALSE	NONE VOLTS

\*

N

O

T

E

S

**INVERTER TORQUE:** CONSTANT 10:1

**INV. HP SPEED RANGE:** NONE

**ENCODER:** NONE

NONE NONE

NONE NONE PPR

**BRAKE:** NONE NONE

NONE P/N NONE

NONE NONE

NONE FT-LB NONE V NO BRAKE Hz

## Data Sheet

Date: 1/31/2018

171646.60



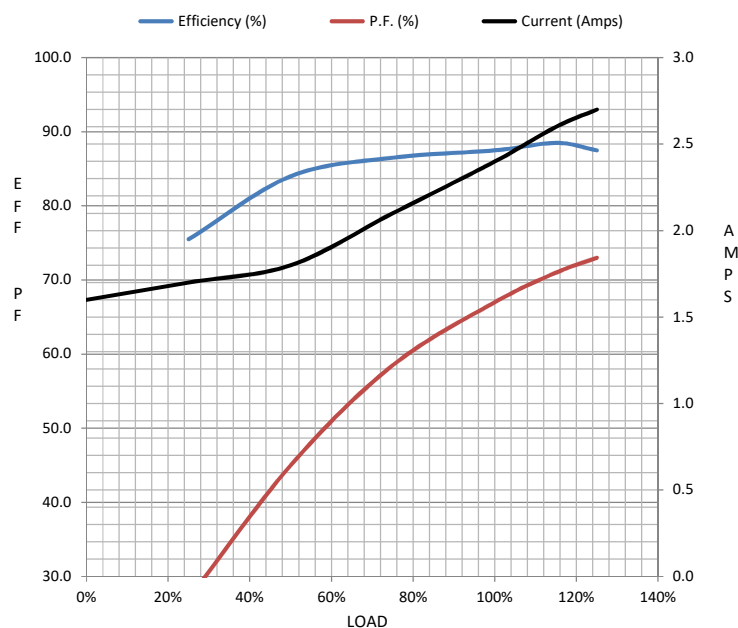
Data @ 460 V

## Motor Load Data

Load	0%	25%	50%	75%	100%	115%	125%	LR	
Current (Amps)	1.60	1.70	1.80	2.10	2.40	2.60	2.70	19.3	
Torque (ft-lb)	0.00	1.10	2.20	3.4	4.5	5.2	5.7	16.6	
RPM	1800	1790	1780	1770	1760	1.755	1750	0	
Efficiency (%)		75.5	84.0	86.5	87.5	88.5	87.5		
P.F. (%)	6.5	27.0	45.0	58.5	67.0	71.0	73.0	55.0	

## Motor Speed Data

	LR	Pull-Up	BD	Rated	Idle	Information Block			
Speed (RPM)	0	315	1335	1760	1800	HP	1.5		
Current (Amps)	19.3	18.7	11.5	2.40	1.60	Sync. RPM	1800		
Torque (ft-lb)	16.6	14.3	19.2	4.5	0.00	Frame	145		



HP	1.5			
Sync. RPM	1800			
Frame	145			
Enclosure	TEFC			
Construction	TFC			
Voltage	208-230/460#190/380		V	
Frequency	60		Hz	
Design	B			
LR Code letter	M			
Service Factor	1.15			
Temp Rise @ FL	29		° C	
Duty	CONT			
Ambient	40		° C	
Elevation	1,000		feet	
Rotor/Shaft wk²	0.00		Lb-Ft²	
Ref Wdg	T06804008 NONE			
Sound Pressure @ 1M	38		dBA	
VFD Rating	CONSTANT 10:1			
Outline Dwg	B-SS622146			
Conn. Diag	00501001			
Additional Specifications:				
0				
0				
EQUIV CKT (OHMS / PHASE)				
R1	R2	X1	X2	Xm
0.0000	0.0000	0.0000	0.0000	0.0000

## Speed - Torque Curve

