

PRODUCT INFORMATION PACKET

Model No: 171813.60

Catalog No: 171813.60

171813.60..15/10HP..3550/2960RPM.254TC.TEFC.190/230/380/460V.3PH.60/50HZ.CONT.40C.1.25SF.RIGID C....
.....DRILL/ TAP SHFT END 3/4"-10 RH.....

Regal and are trademarks of Regal Rexnord Corporation or one of its affiliated companies.
©2022 Regal Rexnord Corporation, All Rights Reserved. MC017097E



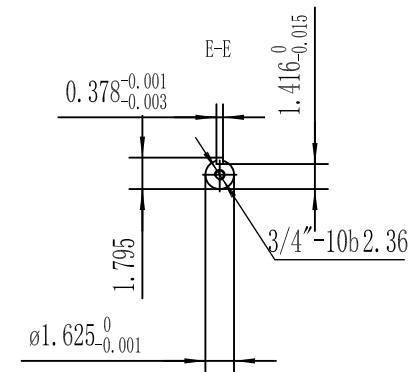
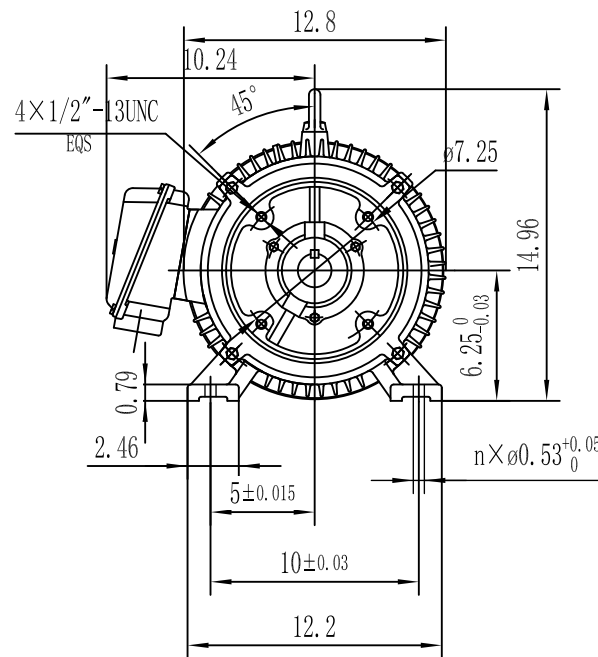
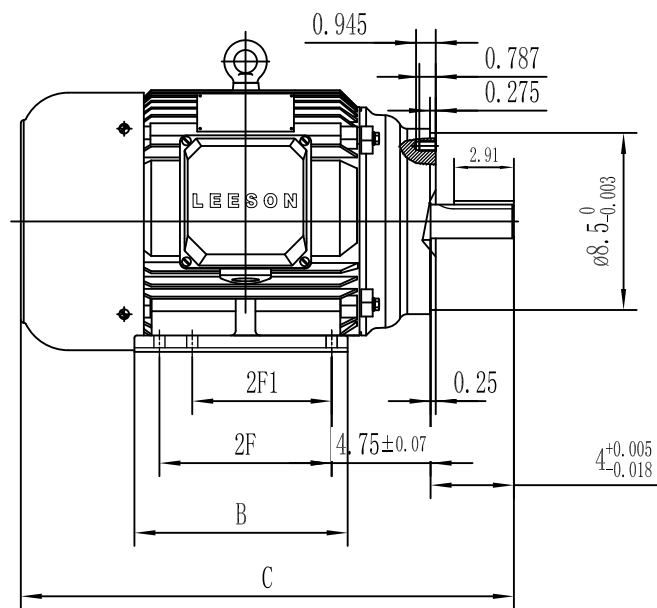
Nameplate Specifications

Output HP	15 Hp	Output KW	11.2 kW
Frequency	60 Hz	Voltage	208-230/460 V
Current	38.0-34.5/17.3 A	Speed	3550 rpm
Service Factor	1.25	Phase	3
Efficiency	92.4 %	Power Factor	88.5
Duty	Continuous	Insulation Class	F
Design Code	B	KVA Code	G
Frame	254TC	Enclosure	Totally Enclosed Fan Cooled
Thermal Protection	Thermostat	Ambient Temperature	40 °C
Drive End Bearing Size	6309	Opp Drive End Bearing Size	6308
UL	Recognized	CSA	N
CE	N	IP Code	43
Number of Speeds	1		

Technical Specifications

Electrical Type	Squirrel Cage Inverter Rated	Starting Method	Wye Start Delta Run Or Inverter
Poles	2	Rotation	Reversible
Resistance Main	.107 Ohms	Mounting	Rigid Base
Motor Orientation	Horizontal	Drive End Bearing	Ball
Opp Drive End Bearing	Ball	Frame Material	Cast Iron
Shaft Type	T	Assembly/Box Mounting	F1/F2 CAPABLE
Inverter Load	CONSTANT 10:1		
Outline Drawing	SS620679	Connection Drawing	4172.01

SS620679



(DRAWING NOT TO SCALE)

C	B	2F	2F1	n
23.7	10.24	8.25 ± 0.03		4
25.5	11.96	10 ± 0.03	8.25 ± 0.03	6

				TOLERANCES UNLESS SPECIFIED		REGAL REGAL-BELOIT CORPORATION	DRAWN	
				DEC.	INCHES		CHK	
				.X	$\pm .1$	TITLE OUTLINE - N250TC	APPD	
				.XX	$\pm .03$		SCALE	NONE
				.XXX	$\pm .005$		REF	
A	RELEASED FOR PRODUCTION ECO-0072457	WGJ 10/13/2015	AB	.XXXX	$\pm .0005$	MAT'L	FMF	
NO.	REVISION	BY & DATE	CHK	ANG	$\pm 7'30''$	FINISH	PREV	
THIS DRAWING IN DESIGN AND DETAIL IS OUR PROPERTY AND MUST NOT BE USED EXCEPT IN CONNECTION WITH OUR WORK ALL RIGHTS OF DESIGN AND INVENTION ARE RESERVED THIS IS AN ELECTRONICALLY GENERATED DOCUMENT - DO NOT SCALE THIS PRINT						RFP	CAD FILE SS620679	SIZE B
						DIST		DRAWING NO. SS620679
								PAGE OF
								REV. A