

PRODUCT INFORMATION PACKET



Model No: 171812.60

Catalog No: 171812.60

171812.60..25HP..3555/2955RPM.284TSC.TEFC.190/230/380/460V.3PH.60/50HZ.CONT.40C.1.15SF.RIGID C.....
....DRILL/TAP 3/4"-10RH 2.25 MIN D.....

Regal and Leeson are trademarks of Regal Rexnord Corporation or one of its affiliated companies.

©2023 Regal Rexnord Corporation, All Rights Reserved. MC017097E





Nameplate Specifications

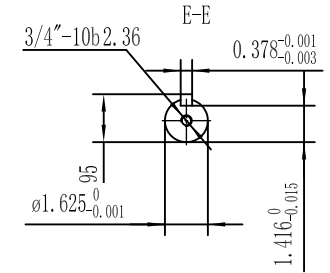
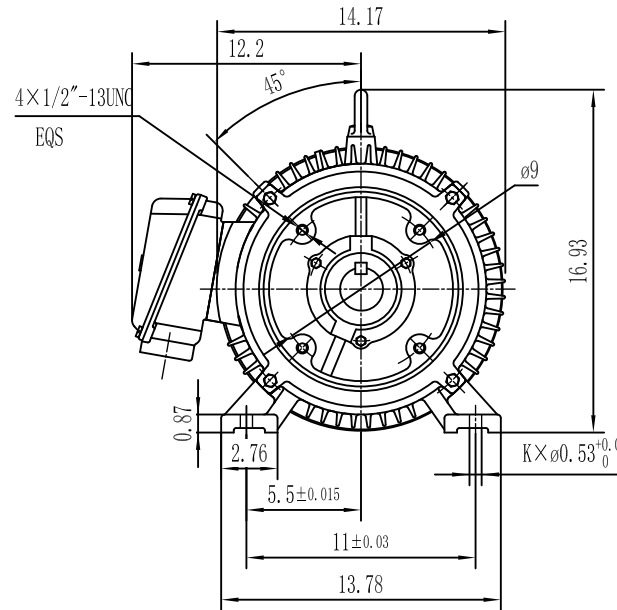
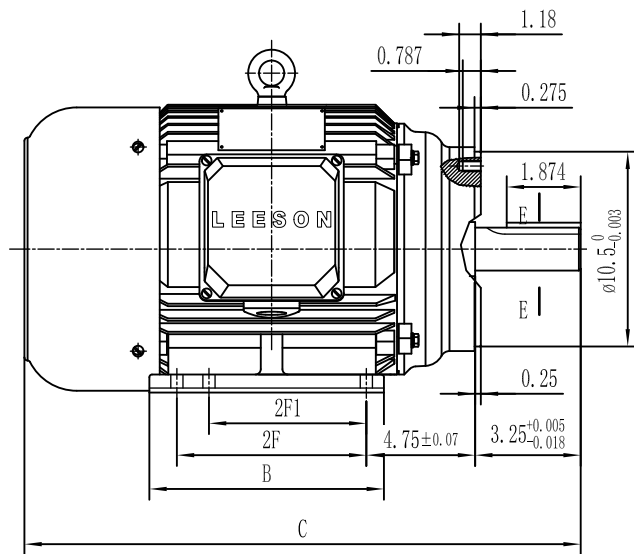
Phase	3	Output HP	25 & 25 Hp
Output KW	18.7 & 18.7 kW	Voltage	208-230/460 & 190/380 V
Speed	3555 & 2940 rpm	Service Factor	1.15 & 1.15
Frame	284TSC	Enclosure	Totally Enclosed Fan Cooled
Thermal Protection	Thermostat	Efficiency	93 & 92.4 %
Ambient Temperature	40 °C	Frequency	60 & 50 Hz
Current	63-56.5/28.3 & 67/33.5 A	Power Factor	88
Duty	Continuous	Insulation Class	F
Design Code	B	KVA Code	G
Drive End Bearing Size	6311	Opp Drive End Bearing Size	6309
UL	Recognized	CSA	N
CE	N	IP Code	43
Number of Speeds	1		

Technical Specifications

Electrical Type	Squirrel Cage Inverter Rated	Starting Method	Wye Start Delta Run Or Inverter
Poles	2	Rotation	Reversible
Resistance Main	.225 Ohms	Mounting	Rigid Base
Motor Orientation	Horizontal	Drive End Bearing	Ball
Opp Drive End Bearing	Ball	Frame Material	Cast Iron
Shaft Type	TS	Assembly/Box Mounting	F1/F2 CAPABLE
Inverter Load	CONSTANT 10:1		
Outline Drawing	SS620678	Connection Drawing	4172.01

This is an uncontrolled document once printed or downloaded and is subject to change without notice. Date Created:06/22/2023

SS620678



(DRAWING NOT TO SCALE)

2F	2F1	B	K	C
9.5±0.03		11.61	4	25.39
11±0.03	9.5±0.03	13.11	6	26.85

				TOLERANCES UNLESS SPECIFIED		REGAL REGAL-BELOIT CORPORATION	DRAWN	
				DEC.	INCHES		CHK	
				.X	±.1	TITLE OUTLINE N280TSC - TEFC	APPD	
				.XX	±.03		SCALE	NONE
				.XXX	±.005		REF	
				.XXXX	±.0005		FMF	
A	RELEASED FOR PRODUCTION ECO-0072457	WGJ 10/13/2015	AB	.XXXX	±.0005	MAT'L		
NO.	REVISION	BY & DATE	CHK	ANG	±7'30"	FINISH	PREV	
THIS DRAWING IN DESIGN AND DETAIL IS OUR PROPERTY AND MUST NOT BE USED EXCEPT IN CONNECTION WITH OUR WORK ALL RIGHTS OF DESIGN AND INVENTION ARE RESERVED THIS IS AN ELECTRONICALLY GENERATED DOCUMENT - DO NOT SCALE THIS PRINT						RFP	CAD FILE	SS620678
						DIST	SIZE	B
							DRAWING NO.	SS620678
							PAGE	OF
							REV.	A