

PRODUCT INFORMATION PACKET



Model No: 171779.60

Catalog No: 171779.60

Severe Duty Motor, 25 HP, 3 Ph, 60 Hz, 208-230/460 V, 1800 RPM, 284T Frame, TEFC



Regal and Leeson are trademarks of Regal Rexnord Corporation or one of its affiliated companies.

©2023 Regal Rexnord Corporation, All Rights Reserved. MC017097E





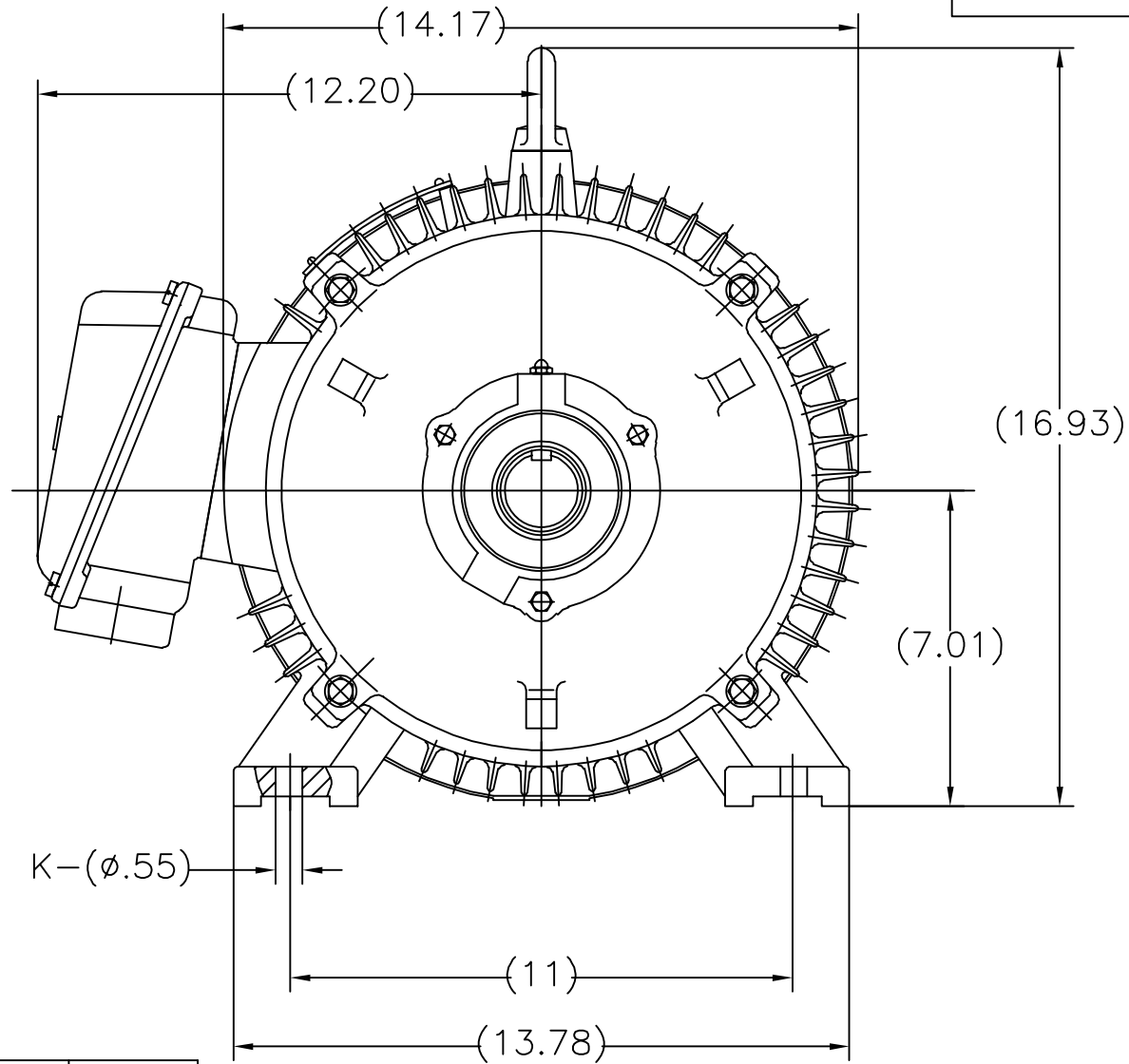
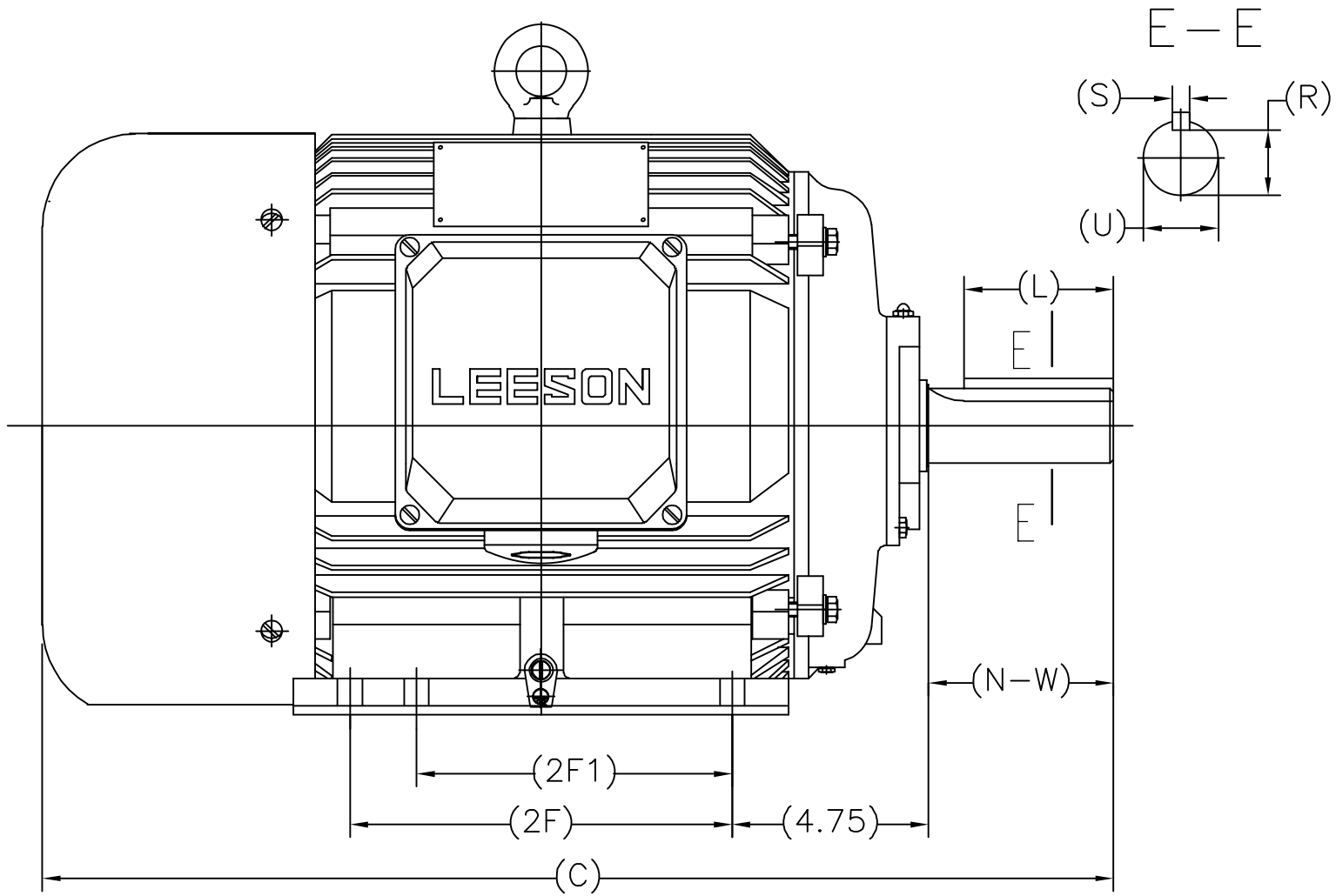
Nameplate Specifications

Output HP	25 Hp	Output KW	18.7 kW
Frequency	60 Hz	Voltage	208-230/460 V
Current	66.0-59.0/29.5 A	Speed	1783 rpm
Service Factor	1.15	Phase	3
Efficiency	93.6 %	Power Factor	85
Duty	Continuous	Insulation Class	F
Design Code	B	KVA Code	H
Frame	284T	Enclosure	Totally Enclosed Fan Cooled
Thermal Protection	No Protection	Ambient Temperature	40 °C
Drive End Bearing Size	6311	Opp Drive End Bearing Size	6309
UL	Recognized	CSA	Y
CE	Y	IP Code	55
Hazardous Location	DIVISION 2	Number of Speeds	1

Technical Specifications


Electrical Type	Squirrel Cage Inverter Rated	Starting Method	Wye Start Delta Run Or Inverter
Poles	4	Rotation	Reversible
Resistance Main	.058 Ohms	Mounting	Rigid Base
Motor Orientation	Horizontal	Drive End Bearing	Ball
Opp Drive End Bearing	Ball	Frame Material	Cast Iron
Shaft Type	T	Overall Length	26.57 in
Shaft Diameter	1.875 in	Shaft Extension	4.62 in
Assembly/Box Mounting	F1/F2 CAPABLE	Inverter Load	VARIABLE 10:1
Connection Drawing	00417203	Outline Drawing	SS622414

SS622414



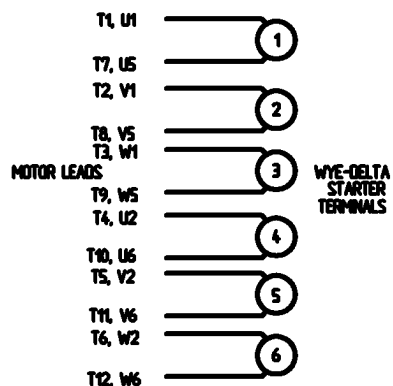
MODEL	DESCRIPTION	2F	2F1	K	C	N-W	U	R	S	L
171778.60	N284TS-2WTC; 1000	9.50		4	25.20	3.23	ø1.61	1.42	.37	1.87
171781.60	N286TS-2WTC;1000	11.00	9.50	6	26.65					
171779.60	N284T-4WTC;1000	9.50		4	26.57	4.60	ø1.87	1.59	.50	3.23
171782.60	N286T-4WTC; 1000	11.00	9.50	6	28.03					

- NOTES:
1. DIMENSIONS ARE REFERENCE ONLY
2. DRAWING MAY NOT BE TO SCALE

				TOLERANCES UNLESS SPECIFIED		 REGAL - BELOIT CORPORATION	DRAWN RFH 07/25/2014						
				DEC.	N/A		CHK						
				.X	± -		APPD SB 07/25/2014						
				.XX	± -		SCALE N/A						
				.XXX	± -		REF						
					.XXXX	± -	MAT'L.						
NO.	REVISION		BY & DATE		CHK	ANG	± -	FINISH					
THIS DRAWING IN DESIGN AND DETAIL IS OUR PROPERTY AND MUST NOT BE USED EXCEPT IN CONNECTION WITH OUR WORK ALL RIGHTS OF DESIGN AND INVENTION ARE RESERVED THIS IS AN ELECTRONICALLY GENERATED DOCUMENT - DO NOT SCALE THIS PRINT					RFP			CAD FILE SS622414.dwg		SIZE	DRAWING NO. PAGE 1 OF 1		REV.
					DIST					A	SS622414		

WYE - DELTA STARTING USEABLE ON 2,4 AND 6 POLE MOTORS.

LOW VOLTAGE CONNECTION



HIGH VOLTAGE CONNECTION



REFER TO THE WYE-DELTA STARTER CONNECTION INSTRUCTIONS FOR PROPER CONNECTION OF POWER LINES TO STARTER.

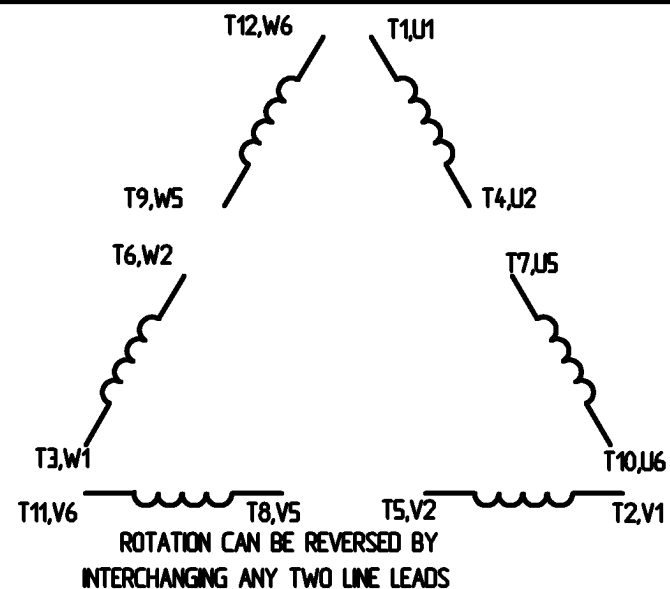
PART WINDING START USABLE ON 4 & 6 POLE MOTORS LOW VOLTAGE CONNECTION ONLY



REFER TO THE PART WINDING STARTER INSTRUCTIONS FOR PROPER CONNECTION OF POWER LINES TO STARTER.

REFER TO THE CUTLER - HAMMER OR EQUIV. FOR PROPER SELECTION OF OVERLOAD HEATER COILS.

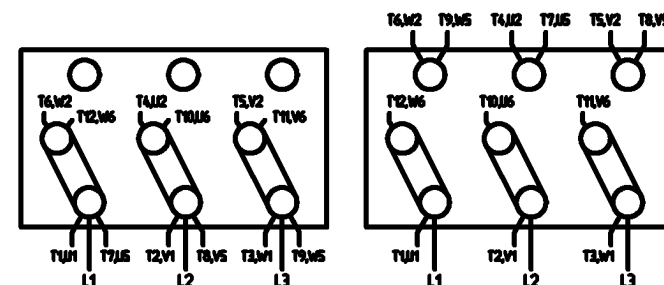
LINE LEADS



12 LEAD DELTA CONNECTION ACROSS THE LINE START (FOR Y START DELTA RUN, REMOVE THE JUMPERS)

LOW VOLTAGE
(MUST BE REWIRED AS SHOWN)

HIGH VOLTAGE
(FACTORY WIRED FOR HIGH VOLTAGE AS SHOWN)



				TOLERANCES UNLESS SPECIFIED		<div>LEESON</div>	ELECTRIC MOTORS GEARMOTORS AND DRIVES	DRAWN C/W 08/28/02	
				DEC.	INCHES			CHK	
				X	± .1	TITLE DELTA - WYE CONNECTION DIAGRAM IEC CAST IRON MOTORS		APPD	
				XX	± .01			SCALE	1:1
				XXX	± .005			REF	
				XXXX	± .0005			FMF	
NO.	REVISION	BY & DATE	CHK	ANG	± 1/2°	FINISH		PREV	
THIS DRAWING IN DESIGN AND DETAIL IS OUR PROPERTY AND MUST NOT BE USED EXCEPT IN CONNECTION WITH OUR WORK. ALL RIGHTS OF DESIGN AND INVENTION ARE RESERVED. THIS IS AN ELECTRONICALLY GENERATED DOCUMENT - DO NOT SCALE THIS PRINT.				REP		CAD FILE	00417203	SIZE	DRAWING NO.
				DST				A	004172-03
									REV.

ERROR: syntaxerror
OFFENDING COMMAND: --nostringval--

STACK:

/CB
-dictionary-
/Pscript_WinNT_Compat
-dictionary-



**1051 CHEYENNE AVE.
GRAFTON, WI 53024
PH. 262-377-8810**

CATALOG #: 171779.60

CONN. DIAGRAM: 00417203

OUTLINE: SS622414

MOUNTING: F1/F2 CAPABLE

WINDING #: T14504005 3

TYPICAL MOTOR PERFORMANCE DATA

HP	kW	SYNC. RPM	F.L. RPM	FRAME	ENCLOSURE	KVA CODE	DESIGN
25&20	18.7&14.9	1800	1783&1480	284T	TEFC	H	B

PH	Hz	VOLTS	AMPS	START TYPE	DUTY	INSL	S.F.	AMB°C
3	60/50	208-230/460&190/380	66-59/29.5&60/30	Y START D RUN OR INV	CONTINUOUS	F5	1.15/1.15	40

FULL LOAD EFF:	93.6&93	3/4 LOAD EFF:	94.1	1/2 LOAD EFF:	93.6	GTD. EFF		ELEC. TYPE
FULL LOAD PF:	85&80.8	3/4 LOAD PF:	80	1/2 LOAD PF:	69	92.4		SQ CAGE INV RATED

F.L. TORQUE	LOCKED ROTOR AMPS	L.R. TORQUE	B.D. TORQUE	F.L. RISE°C
73.5 LB-FT	400 / 200	145 LB-FT 197 %	225 LB-FT 306 %	44

SOUND PRESSURE @ 3 FT.	SOUND POWER	ROTOR WK^2	MAX. WK^2	SAFE STALL TIME	STARTS / HOUR	APPROX. MOTOR WGT
75 dBA	85 dBA	4.23 LB-FT^2	- LB-FT^2	20 SEC.	2	394 LBS.

***** SUPPLEMENTAL INFORMATION *****

DE BRACKET TYPE	ODE BRACKET TYPE	MOUNT TYPE	ORIENTATION	SEVERE DUTY	HAZARDOUS LOCATION	DRIP COVER	SCREENS	PAINT
STANDARD	STANDARD	RIGID	HORIZONTAL	PREMIUM SEVERE DUTY	DIVISION 2	FALSE	NONE	GREEN (EPOXY)

BEARINGS		GREASE	SHAFT TYPE	SPECIAL DE	SPECIAL ODE	SHAFT MATERIAL	FRAME MATERIAL
DE	ODE						
BALL	BALL						
6311	6309	POLYREX EM	T	NONE	NONE	AISI 1045 (C-240)	CAST IRON

THERMO-PROTECTORS				THERMISTORS	CONTROL	SPACE HEATERS
THERMOSTATS	PROTECTORS	WDG RTDs	BRG RTDs			
NONE	NOT	NONE	NONE	NONE	FALSE	NONE VOLTS

*

N

O

T

E

INVERTER TORQUE: VARIABLE 10:1

INV. HP SPEED RANGE: NONE

ENCODER: NONE

NONE NONE

NONE NONE PPR

BRAKE: NONE NONE

NONE P/N NONE

NONE NONE

NONE FT-LB NONE V NONE Hz

Data Sheet

Date: 1/17/2018

171779.60



Data @ 460 V

Motor Load Data

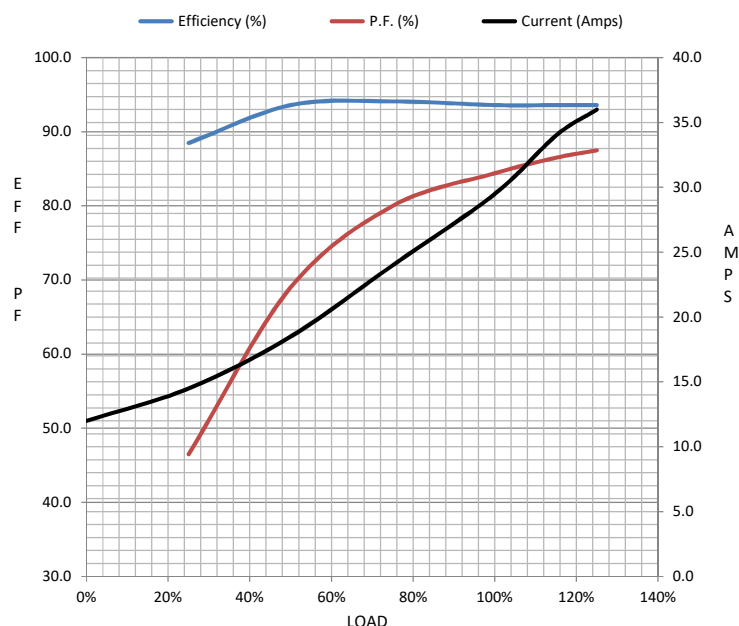
Load	0%	25%	50%	75%	100%	115%	125%	LR	
Current (Amps)	12.0	14.5	18.5	24.0	29.5	34.0	36.0	200	
Torque (ft-lb)	0.00	18.6	37.5	56.0	73.5	84.5	93.5	145	
RPM	1800	1792	1783	1775	1770	1,767	1762	0	
Efficiency (%)		88.5	93.6	94.1	93.6	93.6	93.6		
P.F. (%)	5.5	46.5	69.0	80.0	84.4	86.5	87.5	0.0	

Motor Speed Data

	LR	Pull-Up	BD	Rated	Idle
Speed (RPM)	0	900	1700	1770	1800
Current (Amps)	200	180	130	29.5	12.0
Torque (ft-lb)	145	130	225	73.5	0.00

Information Block

HP	25.0			
Sync. RPM	1800			
Frame	284			
Enclosure	TEFC			
Construction	TFC			
Voltage	208-230/460#190/380 V			
Frequency	60 Hz			
Design	A			
LR Code letter	H			
Service Factor	1.15			
Temp Rise @ FL	44 °C			
Duty	CONT			
Ambient	40 °C			
Elevation	1,000 feet			
Rotor/Shaft wk²	4.2 Lb-Ft²			
Ref Wdg	T14504005 NONE			
Sound Pressure @ 1M	75 dBA			
VFD Rating	VARIABLE 10:1			
Outline Dwg	SS622414			
Conn. Diag	00417203			
Additional Specifications:				
0				
0				
EQUIV CKT (OHMS / PHASE)				
R1	R2	X1	X2	Xm
0.0000	0.0000	0.0000	0.0000	0.0000



Speed - Torque Curve

