

# PRODUCT INFORMATION PACKET



Model No: 171760.00

Catalog No: 171760.00

**\*\*OBSOLETE, REPLACED BY 215TTFBD6032\*\*** 10 HP 1740 575 TEFC 215TC W/BASE PREM  
General Purpose Motors

Regal and Leeson are trademarks of Regal Rexnord Corporation or one of its affiliated companies.  
©2021 Regal Rexnord Corporation, All Rights Reserved. MC017097E



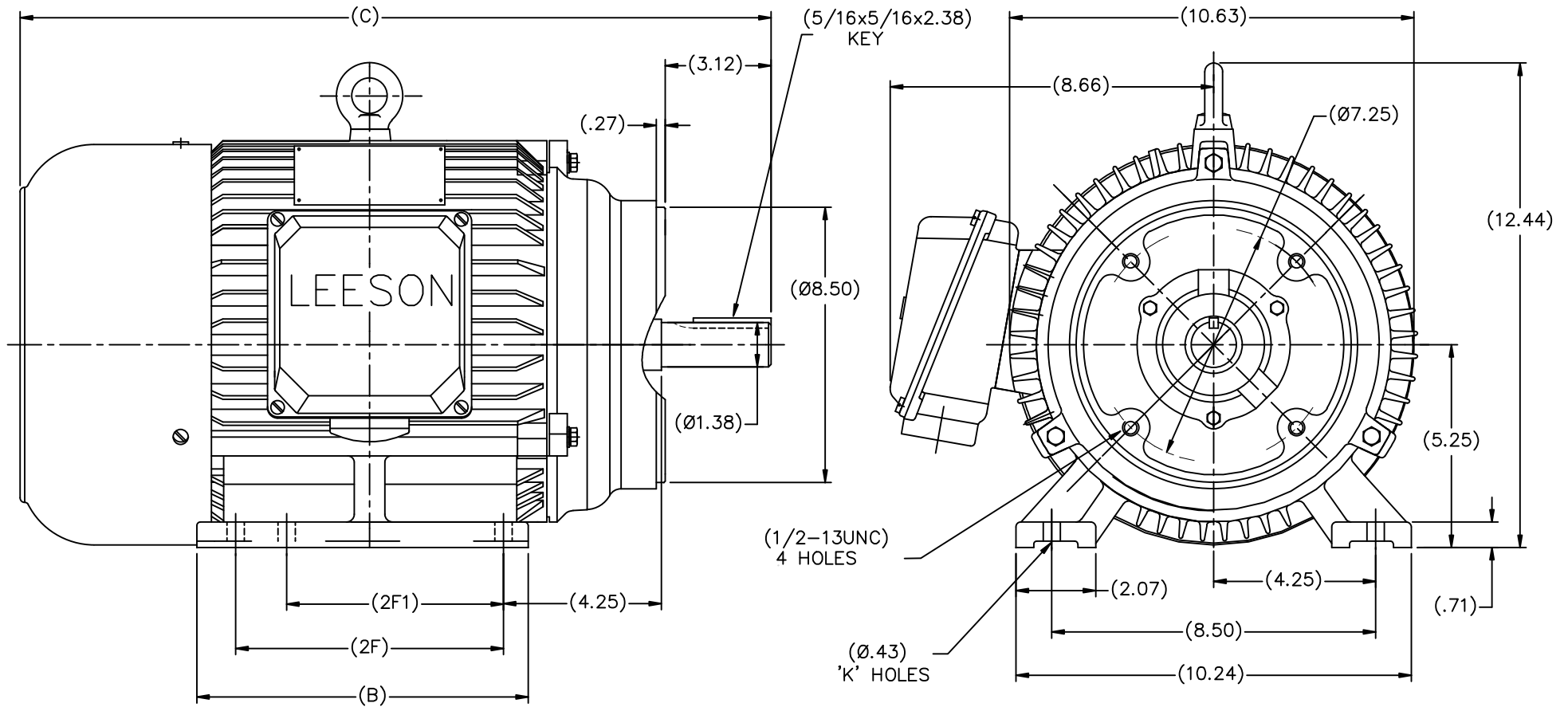


## Nameplate Specifications

Output HP	10 Hp	Output KW	7.5 kW
Frequency	60 Hz	Voltage	575 V
Current	10.0 A	Speed	1763 rpm
Service Factor	1.15	Phase	3
Efficiency	91.7 %	Power Factor	81.6
Duty	Continuous	Insulation Class	F
Design Code	B	KVA Code	H
Frame	215TC	Enclosure	Totally Enclosed Fan Cooled
Thermal Protection	No	Ambient Temperature	40 °C
Drive End Bearing Size	6308	Opp Drive End Bearing Size	6306
UL	Recognized	CSA	Y
CE	Y	IP Code	43
Number of Speeds	1		

## Technical Specifications

Electrical Type	Squirrel Cage Induction Run	Starting Method	Across The Line
Poles	4	Rotation	Reversible
Resistance Main	.216 Ohms	Mounting	Rigid Base
Motor Orientation	Horizontal	Drive End Bearing	Ball
Opp Drive End Bearing	Ball	Frame Material	Cast Iron
Shaft Type	T	Overall Length	20.35 in
Shaft Diameter	1.375 in	Shaft Extension	3.39 in
Assembly/Box Mounting	F1/F2 CAPABLE		
Connection Drawing	005102.01	Outline Drawing	SS622294-N215TC-4W2



DRAWING NOT TO SCALE

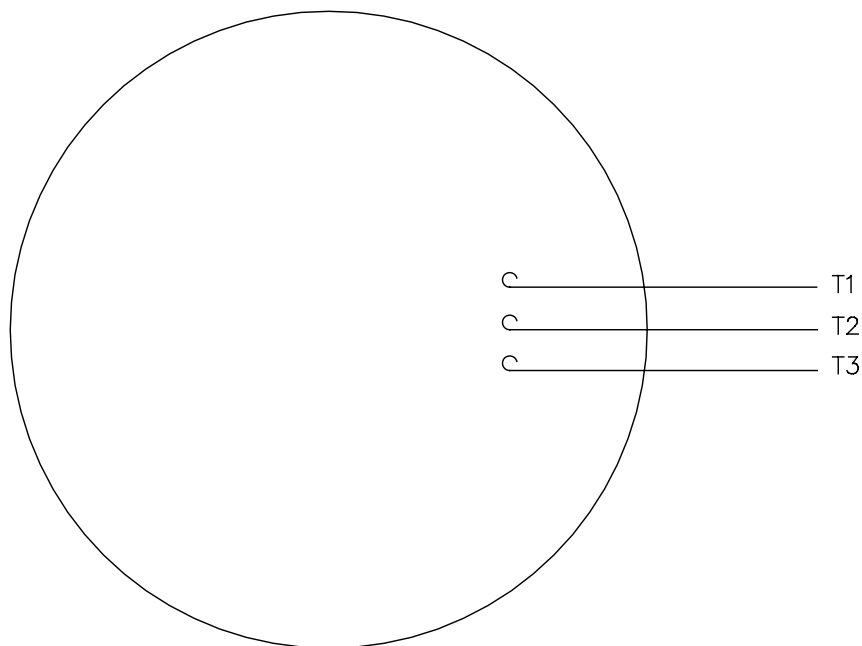
Cat. No.	FRAME	B	C	2F	2F1	K
170166.60	N213TC-2W2	7.32	18.94	5.50	5.50	4
170168.60	N215TC-4W2	8.82	20.35	7.00	5.50	6
170165.60	N213TC-4W2	7.32	18.94	5.50	5.50	4
170167.60	N215TC-4W2	8.82	20.35	7.00	5.50	6
171116.60	N215TC-6W2	8.82	20.35	7.00	5.50	6

NO.		REVISION	BY & DATE	CHK	ANG	±7'30"	FINISH	PREV	
THIS DRAWING IN DESIGN AND DETAIL IS OUR PROPERTY AND MUST NOT BE USED EXCEPT IN CONNECTION WITH OUR WORK. ALL RIGHTS OF DESIGN AND INVENTION ARE RESERVED. THIS IS AN ELECTRONICALLY GENERATED DOCUMENT - DO NOT SCALE THIS PRINT.				RFP	CAD FILE SS622294		SIZE B	DRAWING NO. SS622294	PAGE OF REV.
				DIST					

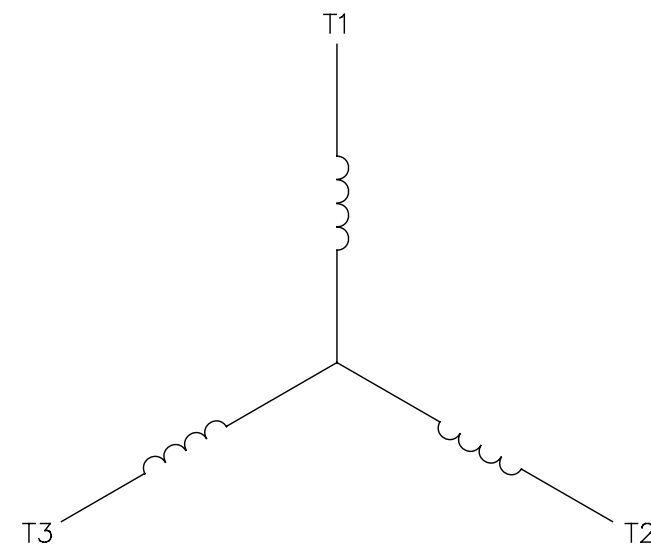
TOLERANCES UNLESS SPECIFIED		DEC.	INCHES	TITLE		DRAWN MQL 03-07-2011	
		.X	±.1	LEESON		CHK	MQL 03-07-2011
		.XX	±.03	ELECTRIC MOTORS		APPD	SB 03-07-2011
		.XXX	±.005	GEARMOTORS		SCALE 1=4	
		.XXXX	±.0005	AND DRIVES		REF	
				N210TC FR-2,4,6-W2- C'FACE - TEFC		FMF	
						PREV	

005102-01

VIEW FROM OUTSIDE OF MOTOR AT SWITCH END.



LINE LEADS

CONNECT LEADS AS FOLLOWS  
FOR FOUR CONDUCTOR CORD ( )

CORD	L1 (RED)	L2 (WHITE)	L3 (BLACK)	(GREEN)
MOTOR	T1	T2	T3	GROUND

NO.	REVISION	BY & DATE	CHK	ANG	TOLERANCES UNLESS SPECIFIED		FINISH	DRAWN	CHK	APPD	SCALE	REF	FMP	PREV
					DEC.	INCHES								
					.X	±.1								
08	UPDATED TO REGAL LOGO	SAJ 06/26/15	AJY	.XX	±.01									
07	UPDATED TO CURRENT STANDARDS	DBT 5/30/97		.XXX	±.005									
06	REDRAWN ON CAD; ADDED DECAL NUMBER	SAW 1/24/95		.XXXX	±.0005									
					±1/2"									
THIS DRAWING IN DESIGN AND DETAIL IS OUR PROPERTY AND MUST NOT BE USED EXCEPT IN CONNECTION WITH OUR WORK ALL RIGHTS OF DESIGN AND INVENTION ARE RESERVED THIS IS AN ELECTRONICALLY GENERATED DOCUMENT - DO NOT SCALE THIS PRINT								RFP	5/1/02	CAD FILE	00510201	SIZE	DRAWING NO.	REV.
								DIST	BRF-NLV			A	005102-01	08

**REGAL**™ Regal Beloit America, Inc.