

PRODUCT INFORMATION PACKET



Model No: 171756.00

Catalog No: 171756.00

****OBSOLETE, REPLACED BY 145TTFC6032**** 2 HP 1800 575 TEFC 145TC W/BASE PREM
General Purpose Motors



Regal and Leeson are trademarks of Regal Rexnord Corporation or one of its affiliated companies.

©2021 Regal Rexnord Corporation, All Rights Reserved. MC017097E



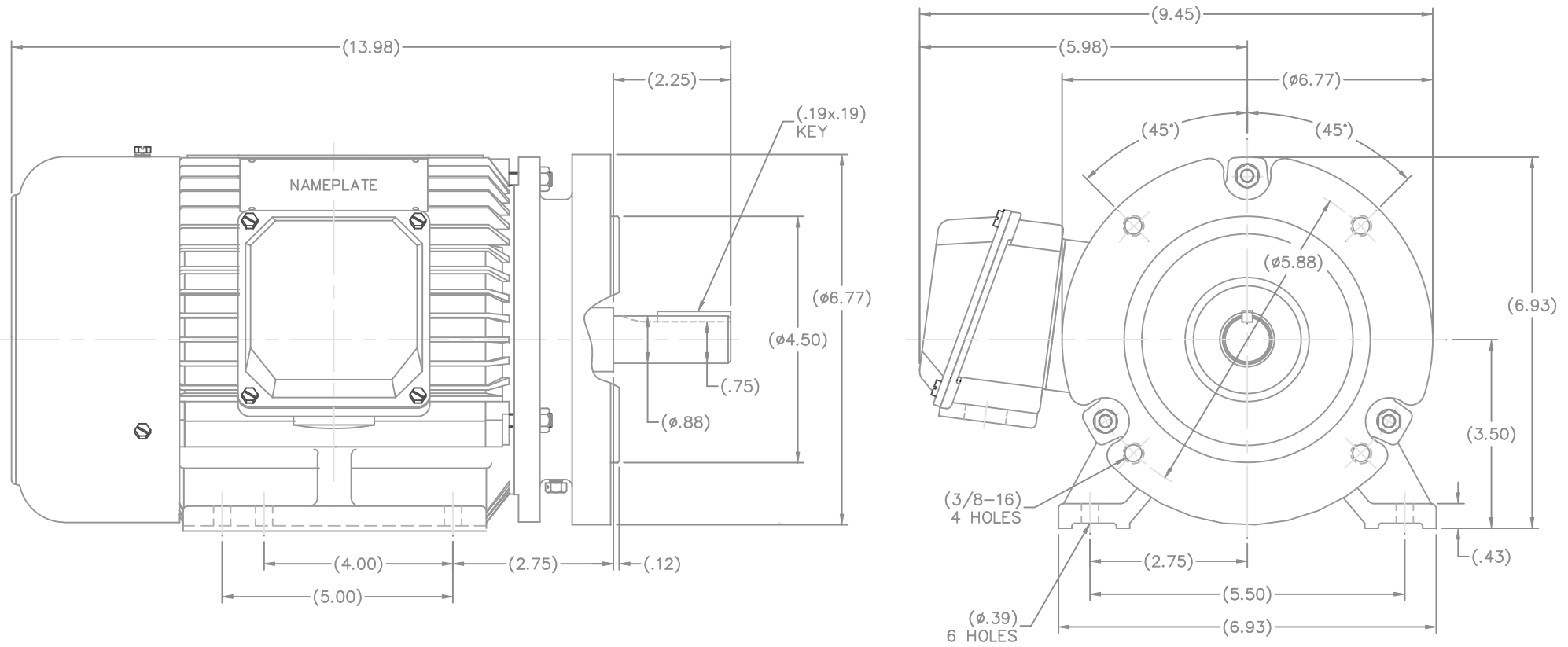


Nameplate Specifications


Output HP	2 Hp	Output KW	1.5 kW
Frequency	60 Hz	Voltage	575 V
Current	2.4 A	Speed	1745 rpm
Service Factor	1.15	Phase	3
Efficiency	86.5 %	Power Factor	72
Duty	Continuous	Insulation Class	F
Design Code	B	KVA Code	K
Frame	145TC	Enclosure	Totally Enclosed Fan Cooled
Thermal Protection	No	Ambient Temperature	40 °C
Drive End Bearing Size	6205	Opp Drive End Bearing Size	6205
UL	Recognized	CSA	Y
CE	Y	IP Code	43
Number of Speeds	1		

Technical Specifications

Electrical Type	Squirrel Cage Inverter Rated	Starting Method	Line Or Inverter
Poles	4	Rotation	Reversible
Resistance Main	6.324 Ohms	Mounting	Rigid Base
Motor Orientation	Horizontal	Drive End Bearing	Ball
Opp Drive End Bearing	Ball	Frame Material	Cast Iron
Shaft Type	T	Overall Length	13.98 in
Shaft Diameter	0.875 in	Shaft Extension	2.25 in
Assembly/Box Mounting	F1/F2 CAPABLE		
Outline Drawing	SS622147LE	Connection Drawing	NONE



(DRAWING MAY NOT BE TO SCALE)

			TOLERANCES UNLESS SPECIFIED		 ELECTRIC MOTORS GEARMOTORS AND DRIVES	DRAWN MSG 06-28-2006			
			DEC.	INCHES		CHK	ML	06-28-2006	
			.X	±.1		APPD	SB	06-28-2006	
			.XX	±.02		SCALE	9=16		
			.XXX	±.005		REF			
			.XXXX	±.0005		FMF	HEBEI		
NO.	REVISION	BY & DATE	CHK	ANG	±7'30"	FINISH	PREV		
THIS DRAWING IN DESIGN AND DETAIL IS OUR PROPERTY AND MUST NOT BE USED EXCEPT IN CONNECTION WITH OUR WORK. ALL RIGHTS OF DESIGN AND INVENTION ARE RESERVED. THIS IS AN ELECTRONICALLY GENERATED DOCUMENT - DO NOT SCALE THIS PRINT			RFP			CAD FILE	ss622147le	SIZE	DRAWING NO. PAGE OF REV.
			DIST	WA				B	SS622147LE