

# PRODUCT INFORMATION PACKET



Model No: 171654.00

Catalog No: 171654.00

General Purpose Motor, 2 HP, 3 Ph, 60 Hz, 575 V, 1800 RPM, 145T Frame, TEFC



Regal and Leeson are trademarks of Regal Rexnord Corporation or one of its affiliated companies.

©2024 Regal Rexnord Corporation, All Rights Reserved. MC017097E





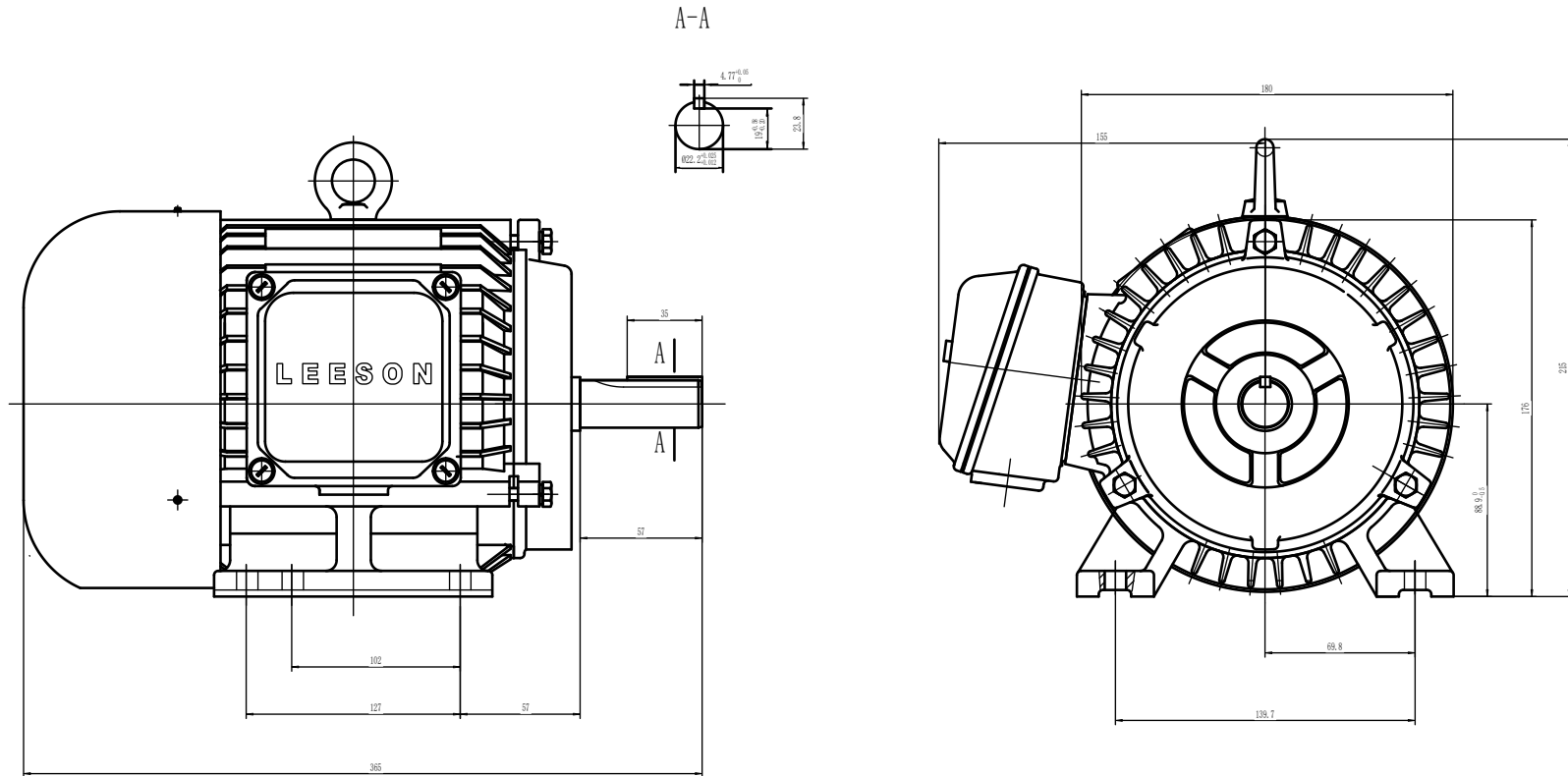
### Nameplate Specifications

Phase	3	Output HP	2 Hp
Output KW	1.5 kW	Voltage	575 V
Speed	1745 rpm	Service Factor	1.15
Frame	145T	Enclosure	Totally Enclosed Fan Cooled
Thermal Protection	No Protection	Efficiency	86.5 %
Ambient Temperature	40 °C	Frequency	60 Hz
Current	2.4 A	Power Factor	72
Duty	Continuous	Insulation Class	F
Design Code	B	KVA Code	K
Drive End Bearing Size	6205	Opp Drive End Bearing Size	6205
UL	Recognized	CSA	Y
CE	Y	IP Code	43
Number of Speeds	1		


### Technical Specifications

Electrical Type	Squirrel Cage Induction Run	Starting Method	Across The Line
Poles	4	Rotation	Reversible
Resistance Main	6.324 Ohms	Mounting	Rigid Base
Motor Orientation	Horizontal	Drive End Bearing	Ball
Opp Drive End Bearing	Ball	Frame Material	Cast Iron
Shaft Type	T	Overall Length	12.48 in
Shaft Diameter	0.875 in	Shaft Extension	2.25 in
Assembly/Box Mounting	F1/F2 CAPABLE		
Outline Drawing	SS622223LE	Connection Drawing	005102.01

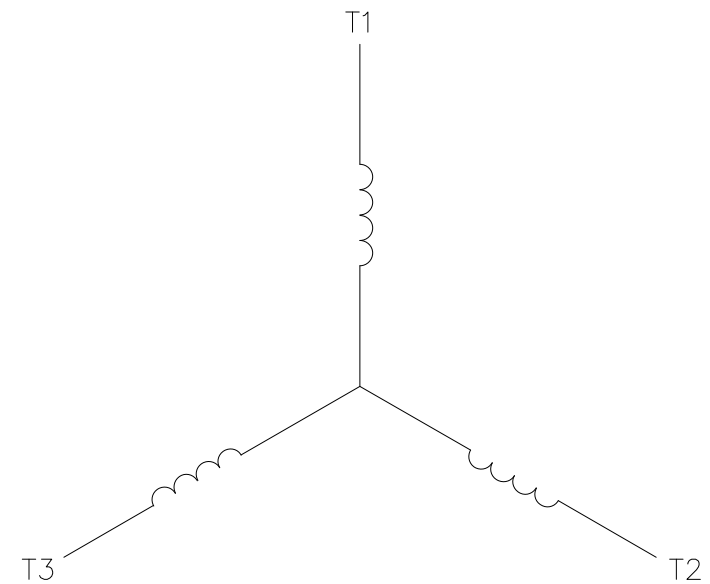
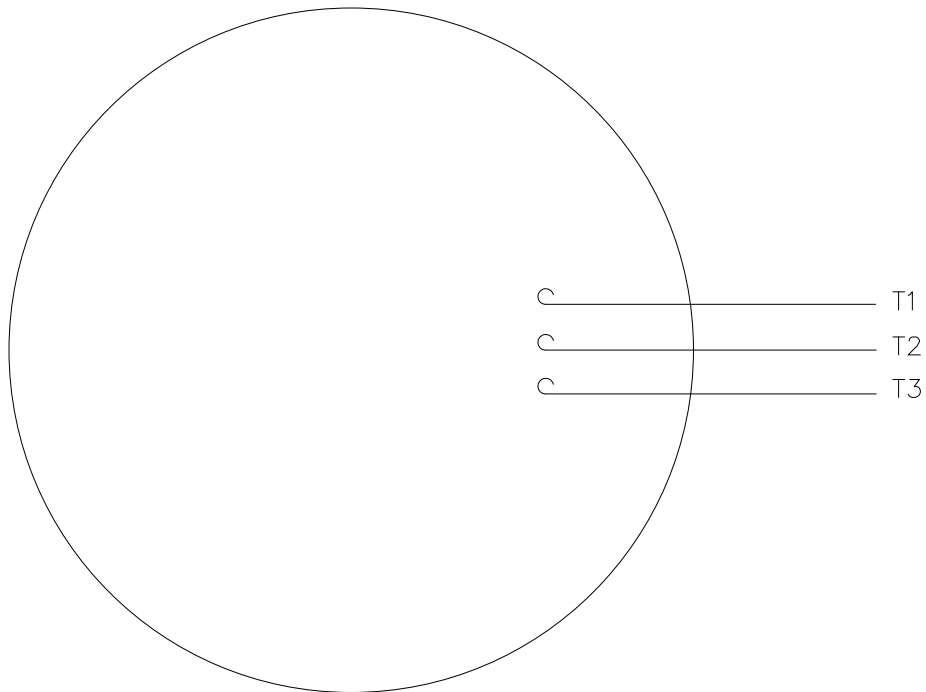
SS622223LE



(DRAWING MAY NOT BE TO SCALE)


				TOLERANCES UNLESS SPECIFIED		 ELECTRIC MOTORS GEARMOTORS AND DRIVES	DRAWN
				DEC.	INCHES		
				.X	±.1		CHK
				.XX	±.03		APPD
				.XXX	±.005	TITLE	SCALE
				.XXXX	±.0005	N140T - 4 - W2 - HEBEI	REF
C	UPDATED MOTOR GEOMETRY	ECO-0172391	WGJ 06-21-2019	.XXXX	±.0005	MAT'L	FMF
NO.	REVISION	BY & DATE	CHK	ANG	±7'30"	FINISH	PREV
THIS DRAWING IN DESIGN AND DETAIL IS OUR PROPERTY AND MUST NOT BE USED EXCEPT IN CONNECTION WITH OUR WORK. ALL RIGHTS OF DESIGN AND INVENTION ARE RESERVED. THIS IS AN ELECTRONICALLY GENERATED DOCUMENT - DO NOT SCALE THIS PRINT				RFP	CAD FILE	ss622223LE	SIZE
				DIST			B
						DRAWING NO.	PAGE OF
						SS622223LE	C
						REV.	

## LINE LEADS



CONNECT LEADS AS FOLLOWS  
FOR FOUR CONDUCTOR CORD ( )

CORD	L1 (RED)	L2 (WHITE)	L3 (BLACK)	(GREEN)
MOTOR	T1	T2	T3	GROUND

				TOLERANCES UNLESS SPECIFIED		 <b>Regal Beloit America, Inc.</b>	DRAWN RDW 5/1/02				
				DEC.	INCHES		CHK				
				.X	±.1		APPD				
				.XX	±.01		TITLE EXTERNAL WIRING DIAGRAM TYPE "T" W/O PROTECTOR	SCALE 1=1			
				.XXX	±.005	REF					
1	CHG FROM MARATHON TO RRX TEMPLATE AS PER ECR-0237142	KVDG 09/18/24	DS	.XXXX	±.0005	MAT'L. DECAL - 004169		FMF			
NO.	REVISION	BY & DATE	CHK	ANG	±1/2*	FINISH		PREV			
THIS DRAWING IN DESIGN AND DETAIL IS OUR PROPERTY AND MUST NOT BE USED EXCEPT IN CONNECTION WITH OUR WORK ALL RIGHTS OF DESIGN AND INVENTION ARE RESERVED THIS IS AN ELECTRONICALLY GENERATED DOCUMENT - DO NOT SCALE THIS PRINT			RFP		5/1/02	CAD FILE 00510201ME		SIZE	DRAWING NO.		REV.
			DIST		4 of 5				A	005102-01ME	

